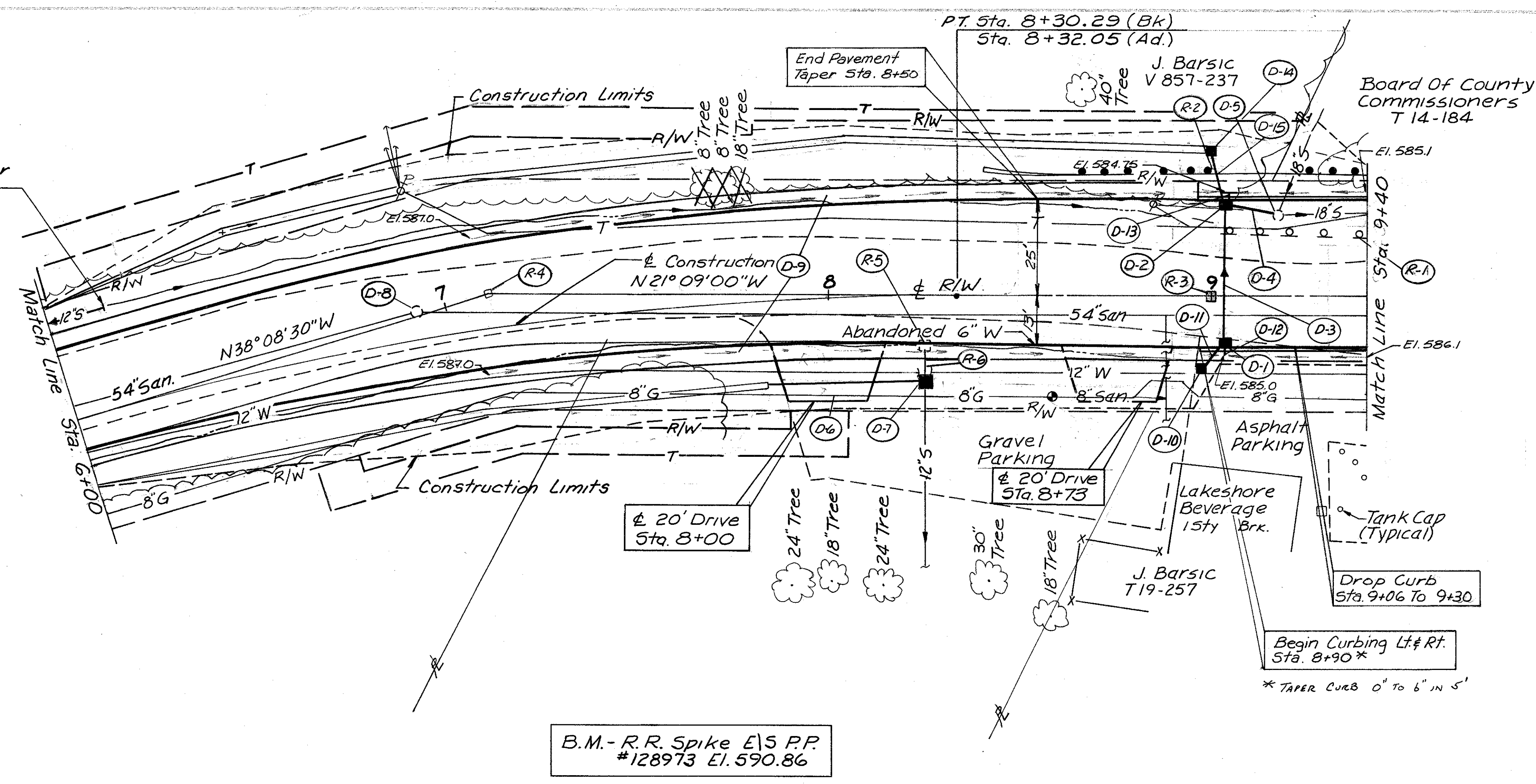
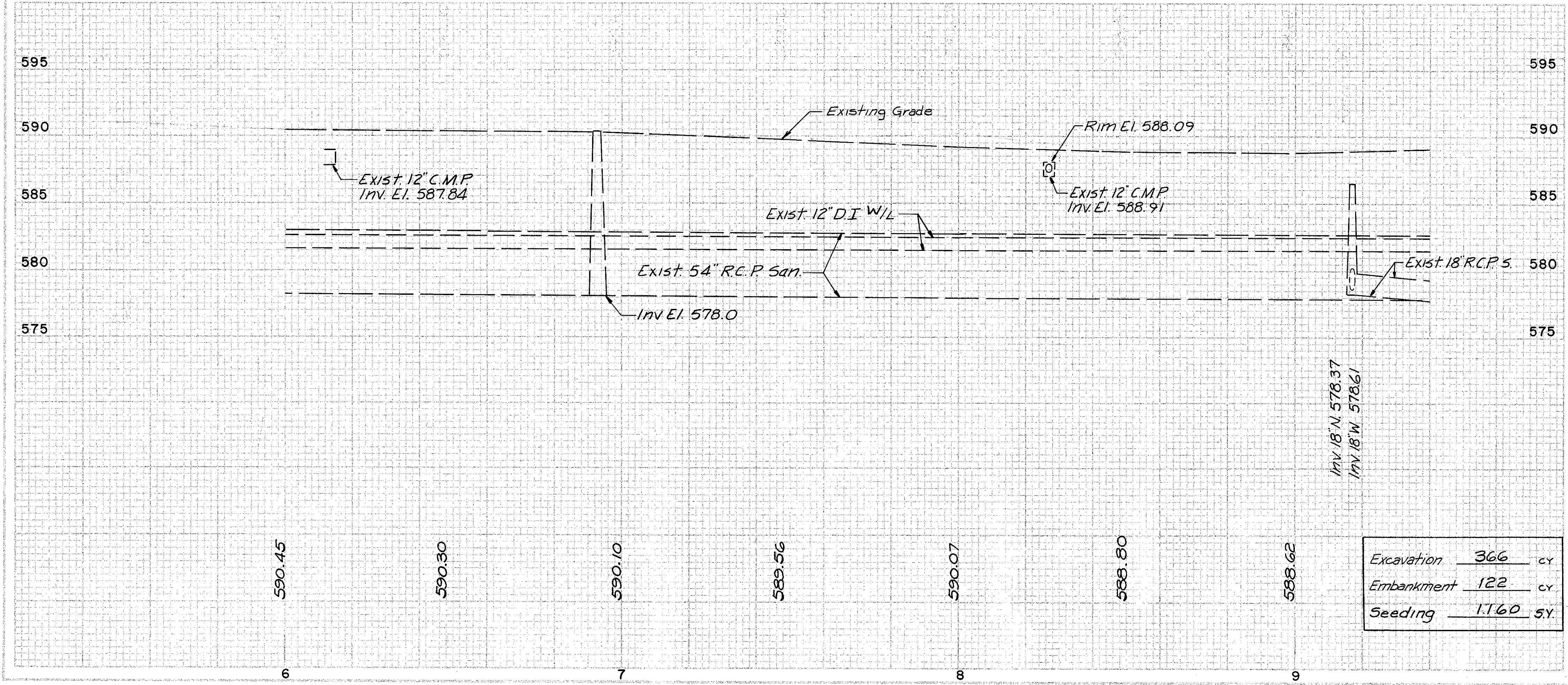


Plug Exist. Sewer w/ Concrete



Ref.	Location	202	606	606	604	202	202
R-1	Sta. 9+00 to 9+40						
R-2	Sta. 8+40 to 9+40	40					
R-3	Sta. 8+99.75		62.5				
R-4	Sta. 7+12.05			1			
R-5	Sta. 8+26, 13' Rt.				1		
R-6	Sta. 8+26, 13' Rt. to 22' Rt.					8	1
TOTALS		40	62.5	1	2	8	1

B.M. - R.R. Spike E15 PP #128973 El. 590.86



Excavation	366	cy
Embankment	122	cy
Seeding	1,160	sq.

Ref.	Location	603	604	604	604	603	604	604	603	605
D-1	Sta. 9+05, 13' Rt.									
D-2	Sta. 9+05, 25' Lt.			1						
D-3	Sta. 9+05, 13' Rt. to 25' Lt.	38								
D-4	Sta. 9+05, 25' Lt. to Sta. 9+17, 21' Lt.	14								
D-5	Sta. 9+17, 21' Lt.		1							
D-6	Sta. 7+83 to Sta. 8+26±				43					
D-7	Sta. 8+26± 22' Rt.						1			
D-8	Sta. 6+92, 1' Lt.±		1							
D-9	Sta. 7+00 to Sta. 9+40								480	
D-10	Sta. 8+97, 19.5' Rt.			1						
D-11	Sta. 8+97 to Sta. 9+05	10								
D-12	Sta. 9+05, Rt.								5	
D-13	Sta. 9+05, Lt.								5	
D-14	Sta. 9+00, 40' Lt.					1				
D-15	Sta. 9+00 to Sta. 9+05				15					
TOTALS		62	2	2	1	58	1	1	10	480