

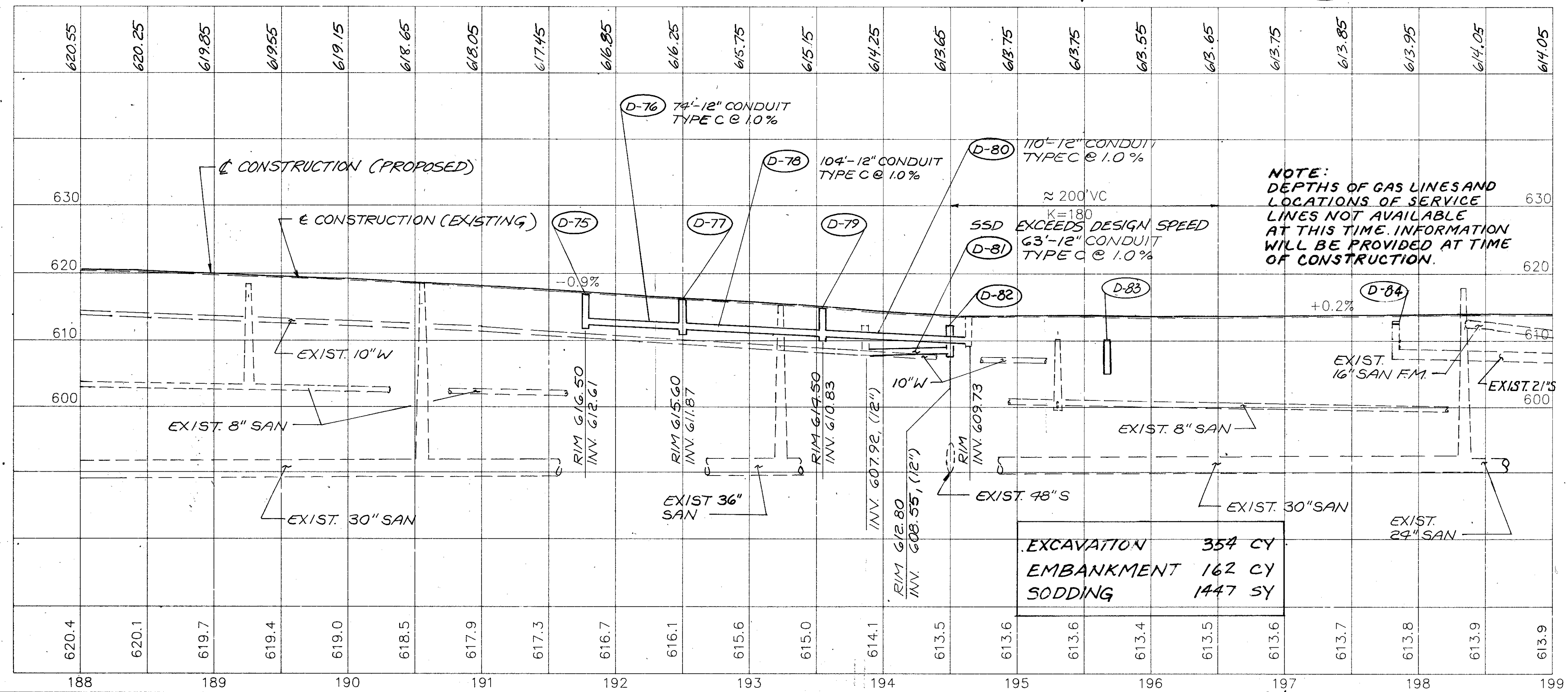
CURVE 4
 $\Delta = 05^{\circ}46'57''$
 $R = 5729.58$
 $T = 289.37'$
 $L = 578.24'$
 $D = 1'00'00''$

B.M. #8
 RRS IN E/S
 LPP #806927
 EL. 614.43

- ◆ COST FOR CATCH BASIN REMOVED TO BE INCLUDED IN UNIT PRICE BID FOR ITEM 604 CATCH BASIN 2-2-B
- ◆ INSTALL GUARDRAIL POSTS TO AVOID 10" WATERMAIN
- ◆ INSTALL GUARDRAIL POSTS (R-277) AGAINST EDGE OF WALK

REF	LOCATION	SQ.FT.	LIN.FT.	LIN.FT.	EACH	EACH	SQ.FT.
R-75	STA. 191+60 TO 191+80, RT.	100					
R-76	STA. 191+60 TO 191+80, RT.						100
R-77	STA. 192+22 TO 192+42, RT.	100					
R-78	STA. 192+22 TO 192+42, RT.						100
R-79	STA. 193+42 TO 193+58, RT.	50					
R-80	STA. 193+42 TO 193+58, RT.						50
R-275	STA. 193+58.5 TO 195+71, LT.		212.5				
R-276	STA. 194+00 TO 195+12.5, RT.		112.5				
R-277	STA. 192+55 TO 196+75, RT.			312.5	2		
R-278	STA. 192+60 TO 196+85, LT.			375	2	16*	
TOTALS		250	325	687.5	4	16	250

* STA. 193+75 TO 194+75



NOTE:
 DEPTHS OF GAS LINES AND
 LOCATIONS OF SERVICE
 LINES NOT AVAILABLE
 AT THIS TIME. INFORMATION
 WILL BE PROVIDED AT TIME
 OF CONSTRUCTION.

REF	LOCATION	LIN.FT.	EACH	EACH
D-75	STA. 191+76, 19' RT.		1	
D-76	STA. 191+76 TO 192+50, RT.	74		
D-77	STA. 192+50		1	
D-78	STA. 192+50 TO 193+54, RT.	104		
D-79	STA. 193+54		1	
D-80	STA. 193+54 TO 194+64, RT.	110		
D-81	STA. 193+88 TO 194+50.6, LT.	63		
D-82	STA. 194+50.6, 20' LT.		1	
D-83	STA. 195+70, 35' LT.	4	1	
D-84	STA. 197+82, 20' RT.			1
TOTALS		355	5	1

S.R. 283 PLAN & PROFILE STA. 188+00 TO 199+00