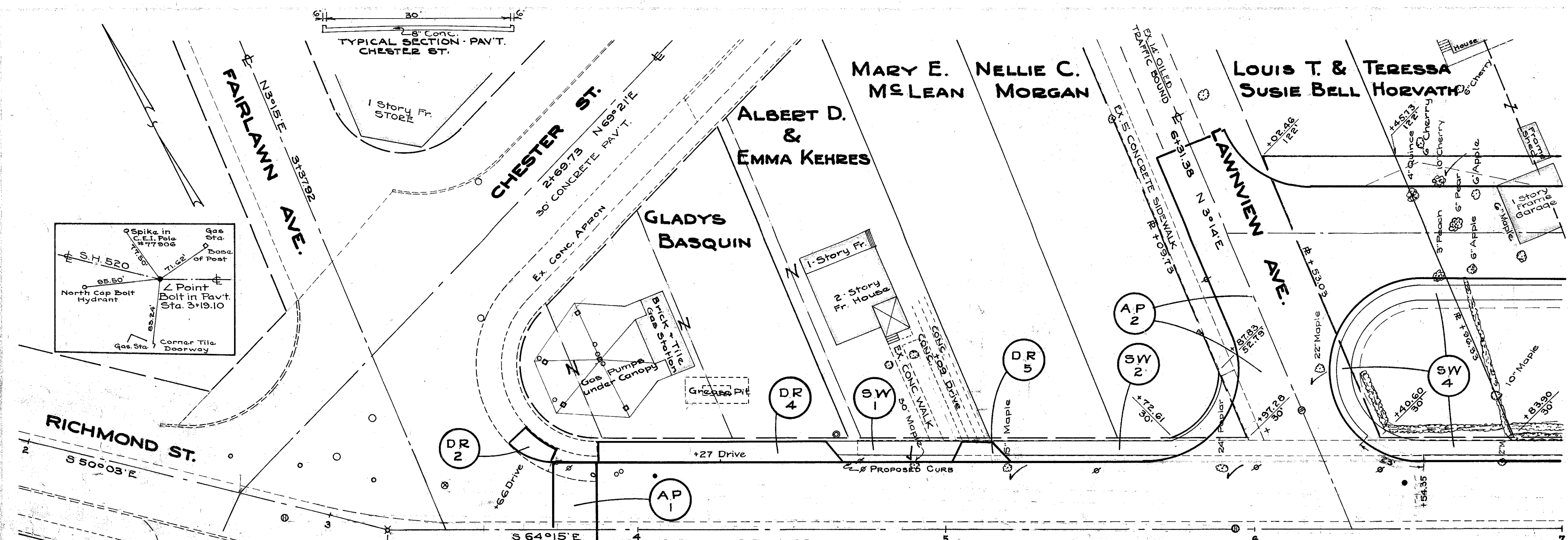


LAKE COUNTY
 SH 520- SEC. PAINESVILLE (PT)
 GRADE SEPARATION



DRIVES

Mark	Station	Side	T-70 6" S.Y.	Rem. & Dis. Ex. Pav't S.Y.	1-17 3" C.V.	Detail Sheet No.
DR-1	3+23	R	31.8	—	—	19
DR-2	3+66	L	11.8	13.2	—	19
DR-3	3+80	R	10.9	16.1	—	19
DR-4	4+27	L	56.0	—	—	21
DR-5	5+09	L	10.83	—	—	19
DR-6	6+97	R	10.83	—	3.8	21
TOTAL			132.16	29.3	3.8	

APPROACHES

MARK	STATION	SIDE	Rem. & Dis. of Ex. CURB L.F.	1-12 2-A CURB L.F.	T-35 C.Y.	T-70 7" S.Y.	T-71 7" S.Y.	DETAIL SHEET No.
AP-1	3+06.83-3+87.6	R & L	115	115.75	2.74	66.5	—	19
AP-2	6+31.38-6+97	L	—	66.539	—	—	131742	19
TOTAL			115	781.14	2.74	66.5	131742	

TREES TO BE REMOVED

STATION	SIDE	DIST.	SIZE	KIND
5+20	L	20	15"	MAPLE
5+90	L	20	24"	POPLAR
6+22	L	53	22"	MAPLE
6+52	R	33	10"	ELM
6+60	L	114	10"	CHERRY
4+90	L	20	30	Maple
TOTAL TREES 6 Each				
MARKED THUS				

SIDEWALKS

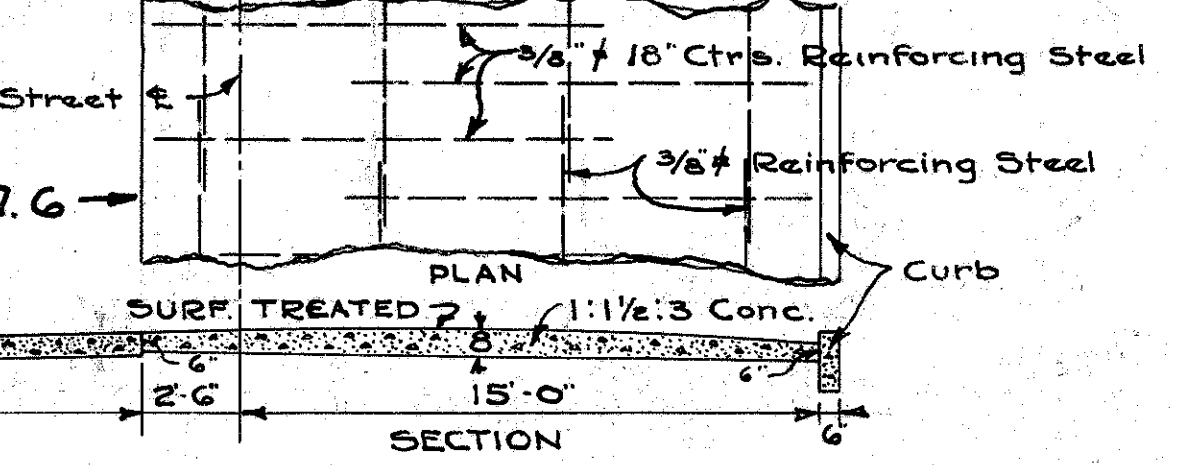
MARK	STATION	SIDE	Sq Ft.
SW-1	4+65-5+03	L	190
SW-2	5+17-5+99	L	460
SW-3	5+00-6+91	R	955
SW-4	As Shown	L	794
SW-5	6+64-As Shown	R	18
TOTAL			2417

CONCRETE STEPS

STATION	SIDE	TREADS NUMBER	LENGTH LIN. FT.	DETAIL SHT. NO.
6+64	R	5	5'-4"	26

STA. 3+87.6
 BEGIN F.A.G.M. 70A(1)

EXISTING PAVEMENT
 STA. 3+87.6 TO STA. 9+37.74
 SCALE 1"=5' H+V



Note: - Marker shall be furnished and
 erected on the right at Sta. 3+06.83
 by the State of Ohio before acceptance
 of this project.

