

T.P. - S.E. COR. CONC. WALK, HOUSE NO 201,  
STA. 20+90, SR#283 (S.R.L.). ELEV. = 651.84

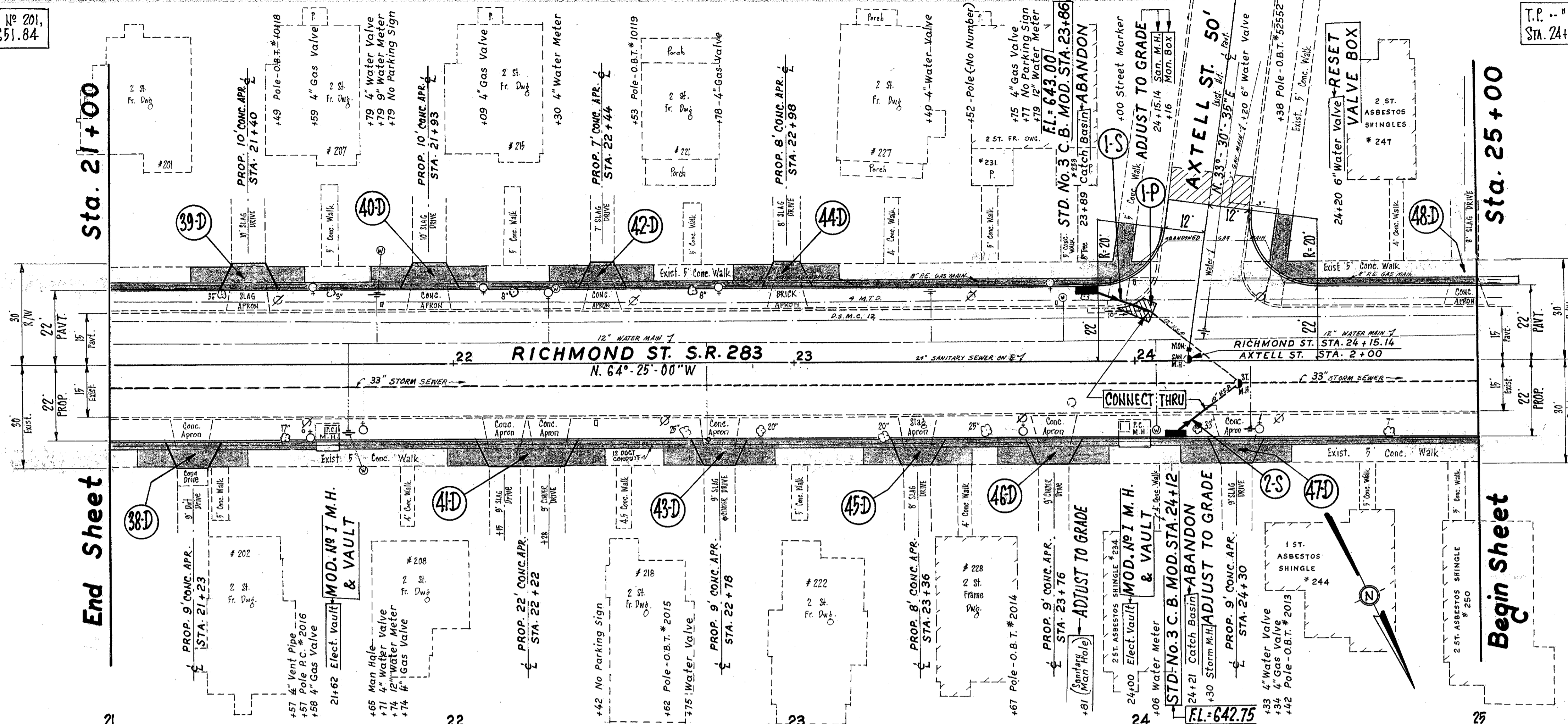
T.P. - "X" S.E. LOWER STEP, HOUSE NO 247,  
STA. 24+73 S.R.#283 (S.R.L.) ELEV. = 647.91

NO. 20	DIVISION	STATE	PROJECT
2	OHIO		

11  
34

LAKE COUNTY

LAK-283-16.85



Sta. 21+00

Sta. 25+00

End Sheet

Begin Sheet

**NOTE:** SEE EXTRA AREA SHEET NO 16 FOR ADDITIONAL INTERSECTION DETAILS & QUANTITIES.

**NOTE:** FOR DRIVEWAY DETAILS & QUANTITIES, SEE SHEET NO 21.

**NOTE:** FOR SUMMARY OF QUANTITIES, ITEM 659 SEEDING & MULCHING, ITEM 202 SIDEWALK REMOVED & DISPOSED OF, ITEM 604 MON. ADJ. TO GRADE, ITEM 608 4\"/>

655  
650  
645  
640  
635

655  
650  
645  
640  
635

STA. 21+00

STA. 25+00

650.29 649.52 648.93 648.36 647.88 647.39 646.89 646.47 645.91

21 22 23 24 25

Ref. No	Station	Side R or L	PAVEMENT			
			ITEM 202	ITEM 305	ITEM A02	ITEM 407
	FROM	TO	SQ. YDS.	CU. YDS.	CU. YDS.	CU. YDS.
	23+94	24+06	5	5	1	0.8
<b>TOTAL</b>			<b>5</b>	<b>5</b>	<b>*0.5</b>	<b>0.8</b>

\* TO BE LAID IN (2) - 1/4" COURSES

STORM SEWERS						
Ref. No	Station		Side R or L	ITEM 603	ITEM 604	ITEM 202
	FROM	TO		12" TYPE "B" CONDUIT, Class "B" BEDDING	STD. No 3 C.B. MODIFIED	STORM M.H. ADJUSTED TO GRADE
			LIQ. FT.	EACH	EACH	EACH
1-S	23+86	24+10	L	20	1	1
2-S	24+12	24+30	R	14	1	1
<b>TOTAL</b>				<b>34</b>	<b>2</b>	<b>2</b>

PLAN & PROFILE - RICHMOND ST. (S.R.#283) - STA. 21+00 to STA. 25+00