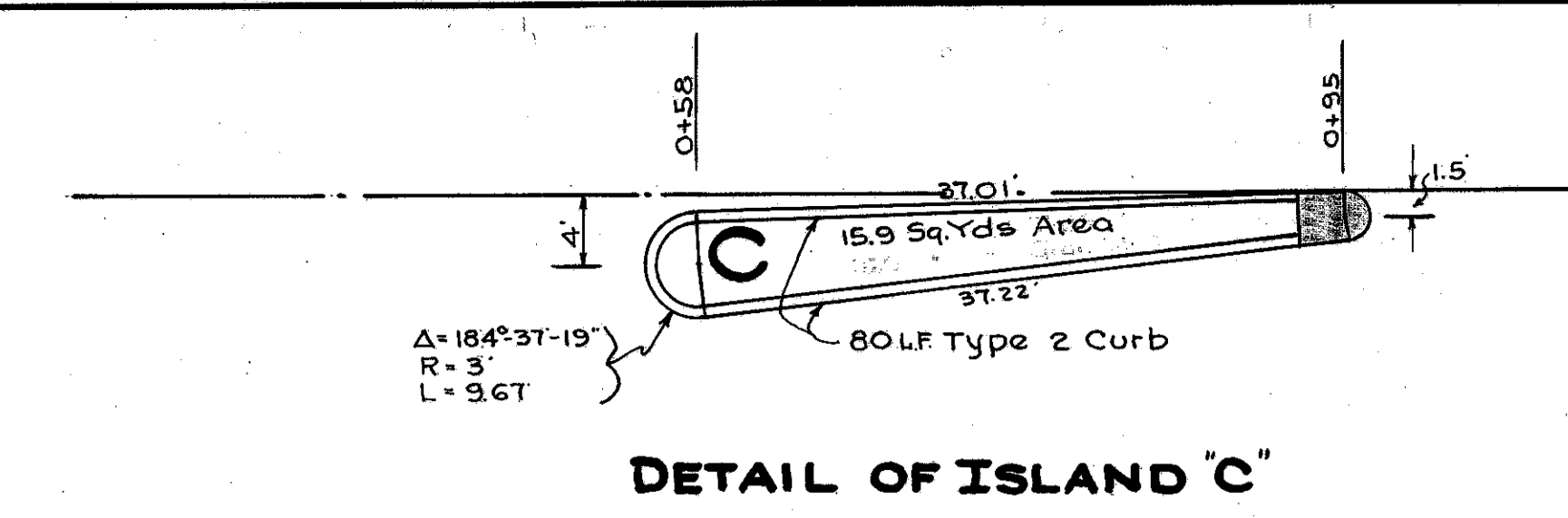
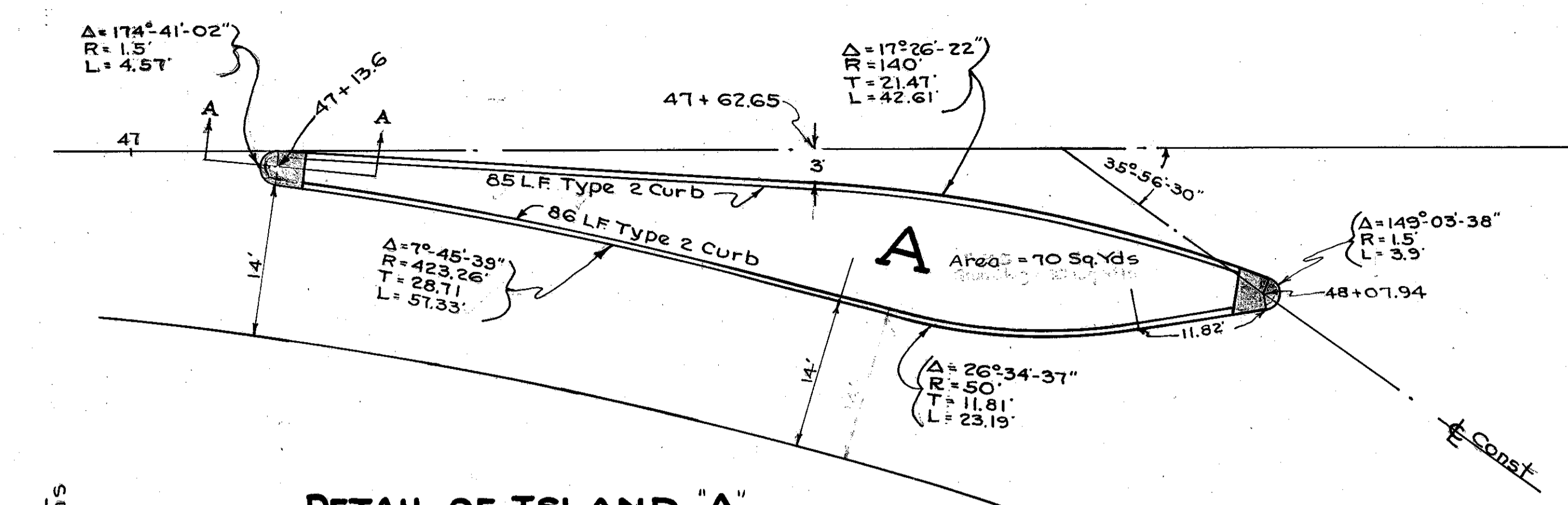
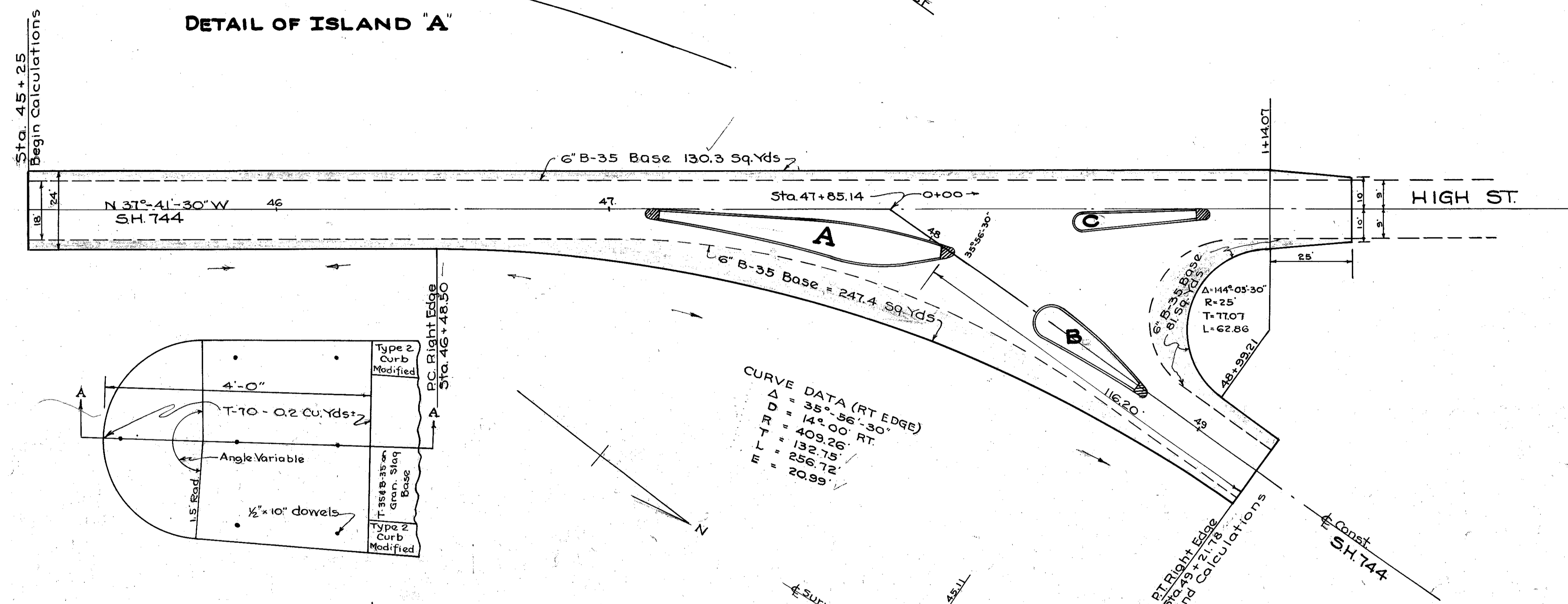


LAKE COUNTY
S.H. 520 SEC. PAINESVILLE (PT)
S.H. 744 SEC. PAINESVILLE (PT)
& FAIRPORT (PT)



DETAIL OF ISLAND "A"

DETAIL OF ISLAND "C"



ESTIMATED QUANTITIES

T-35 1 1/4" Asphaltic Concrete Surface Course
 Sta. 45+25 to Sta 47+85.15 = 260.14 LF
 Sta 0+00 to Sta 1+14.07 = 114.07 LF
 Sta 48+05.58 to Sta. 49+21.78 = 116.20 LF
 Total 490.41 LF

490.41 x 24 = 11,769.8 Sq.Ft
 N.W. Spandrel Area = 25 x (11.07 - 62.96) = 1141.0 "
 N.E. Spandrel Area = 409.26 x (132.75 - 256.12) = 1796.6 "
 Sta. 1+40.7 to 1+65.7 = 25 x 22' (Ave) = 550.0 "
 Total Area = 15,257.4 "
 Deduction for islands-A(743") + B(333") + C(192") = -1,268.0 "
 13,989.4 + 9 = 1554.4 sq yds + A(70) + B(30.9) + C(15.9) Total = 1671.2 Sq. Yds

B-35 1 1/4" Asphaltic Concrete Leveling Course
 Same as above 1671.2 Sq. Yds

B-35 3" Asphaltic Concrete Base Course
 130.3 + 81.1 + 247.4 = 458.7 sq yds x 3/36 = 38.2 Cu. Yds

Granulated Slag Base Course (4" to 5") in islands
 A(70) + B(30.9) + C(15.9) = 116.8 Sq. Yds

T-70 Concrete for Island Ends
 4 Ends @ 0.2 Cu. Yd = 0.8 Cu. Yd

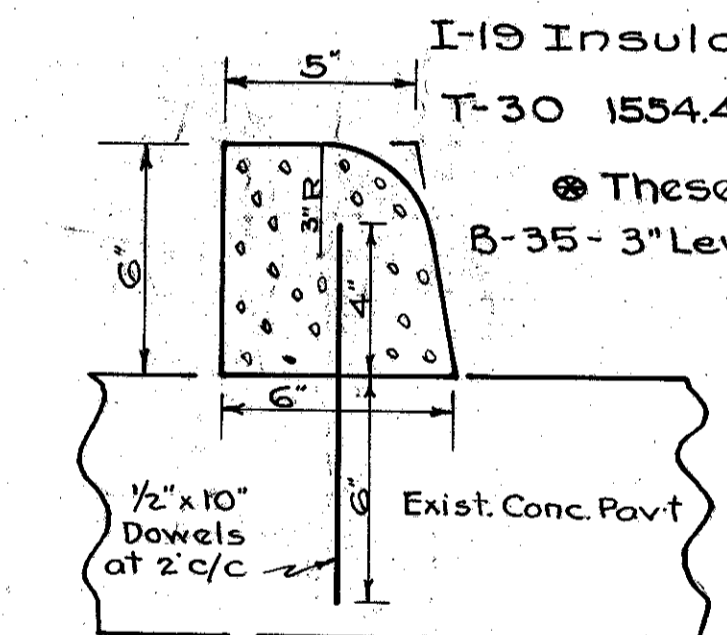
S-23 Dowel Holes = 200 Each

I-12 Type 2 Curb Modified. A(111) + B(85) + C(80) = 336 Lin. Ft

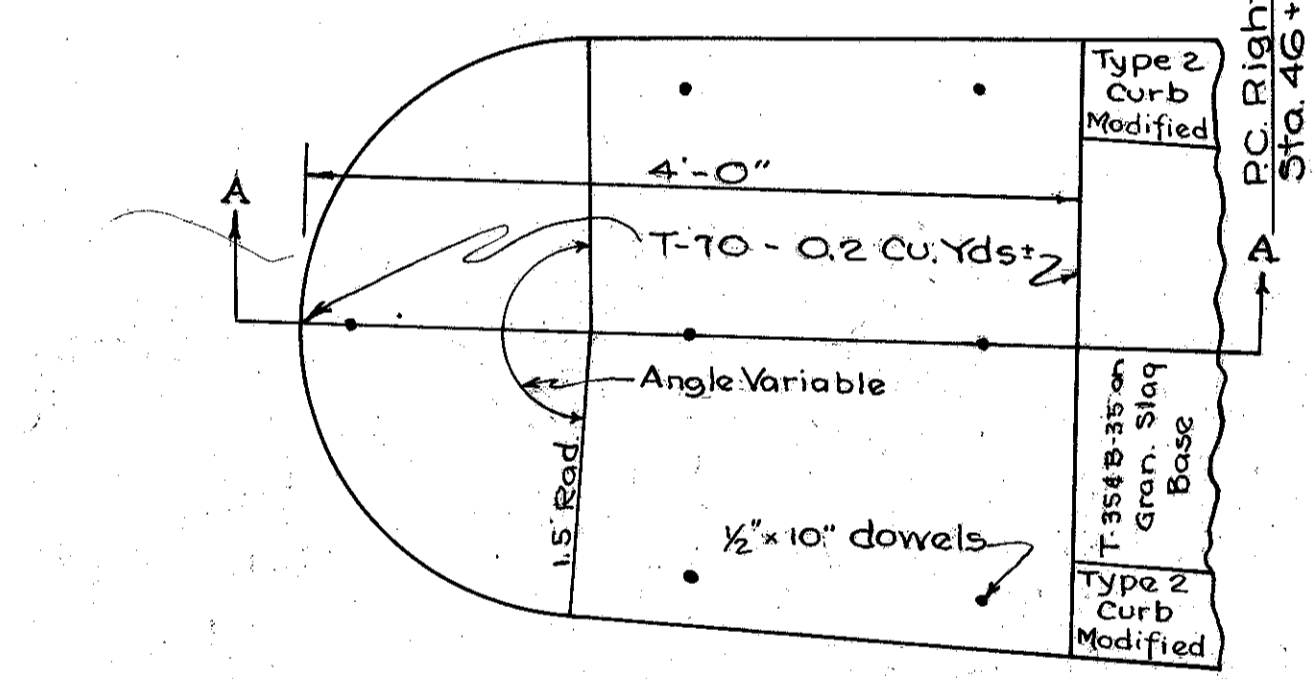
I-19 Insulation Course = 458.7 Sq. Yds

T-30 1534.4 - 458.7 = 1096.6 Sq. Yds

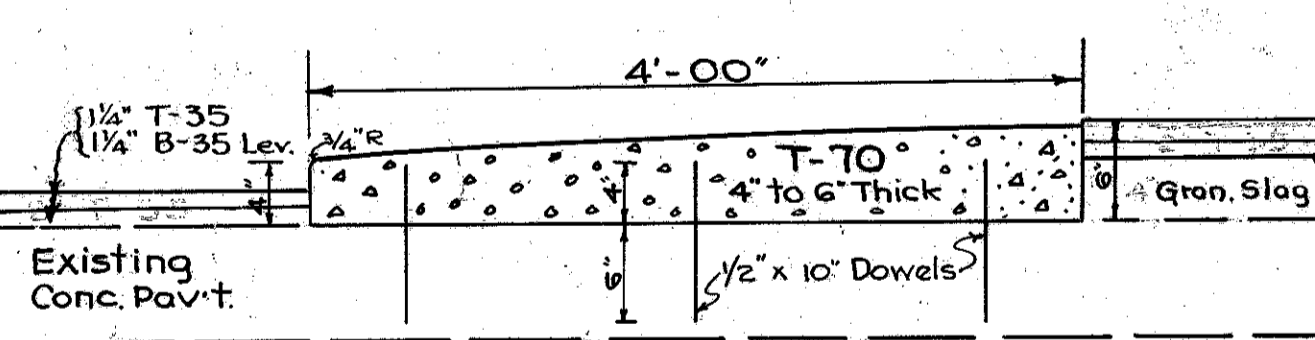
These items carried direct to General Summary
 B-35 - 3" Lev. Course (Same as 3" Base Course) 38.2 Cu. Yds.



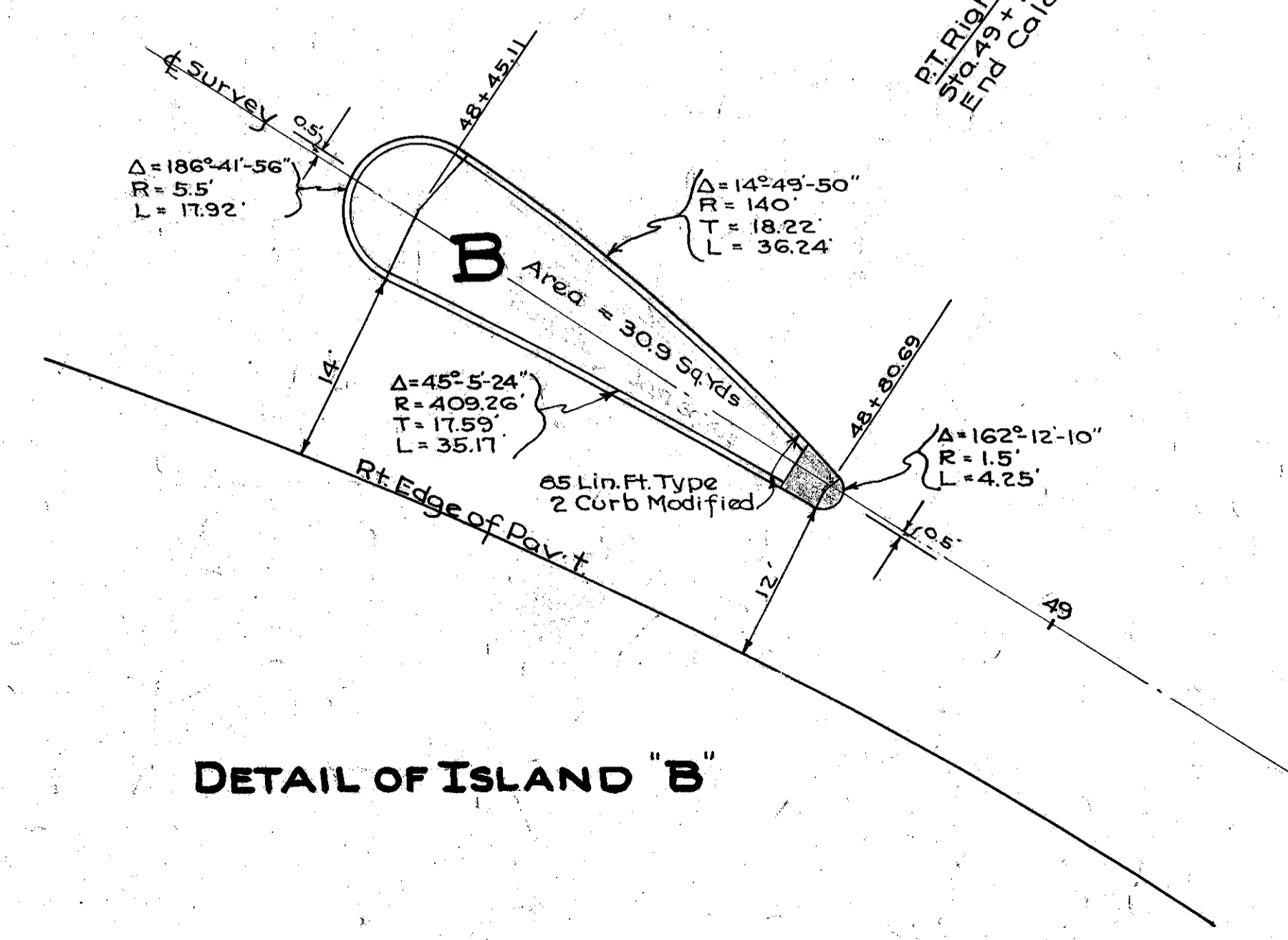
TYPE 2 CURB MODIFIED



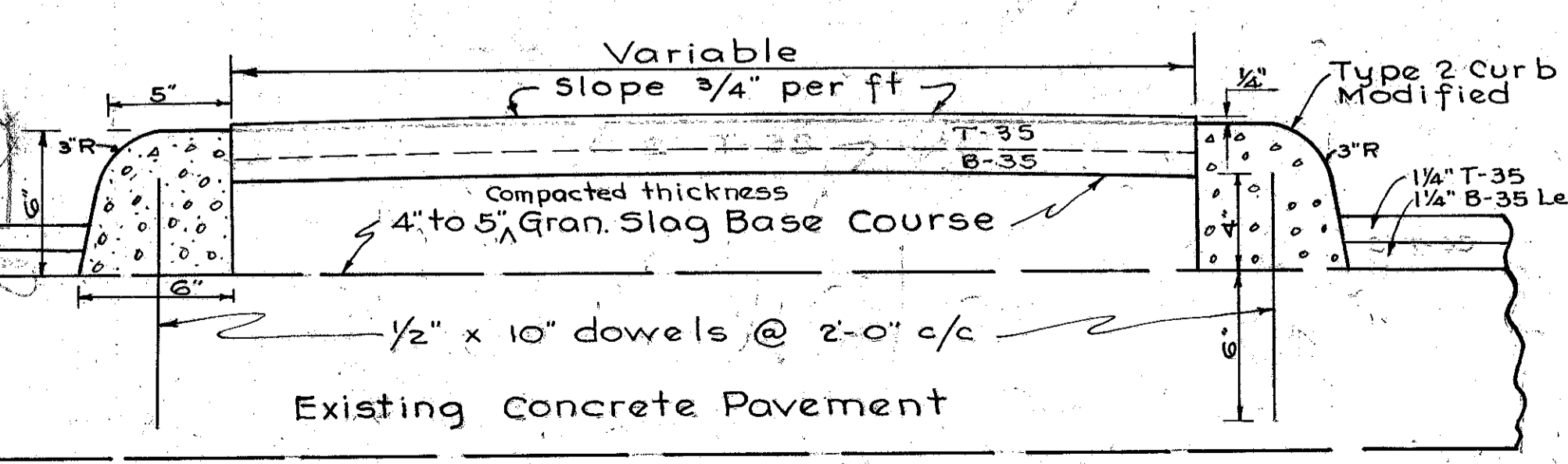
CURVE DATA (RT EDGE)
 Δ = 35°-56'-30"
 R = 140'
 D = 409.26'
 T = 132.75'
 M = 256.72'
 E = 20.99'



TYPICAL CONCRETE END FOR ISLANDS (SEC. A-A)



DETAIL OF ISLAND "B"



TYPICAL SECTION THRU ISLANDS

PAVEMENT DETAIL
STA. 45+25 TO 49+21.78