

Lake Co.  
Field Books  
9  
32  
101  
108  
133

FED. RD. DIST. NO.	STATE	PROJECT	FISCAL YEAR	28
10	OHIO		1945	

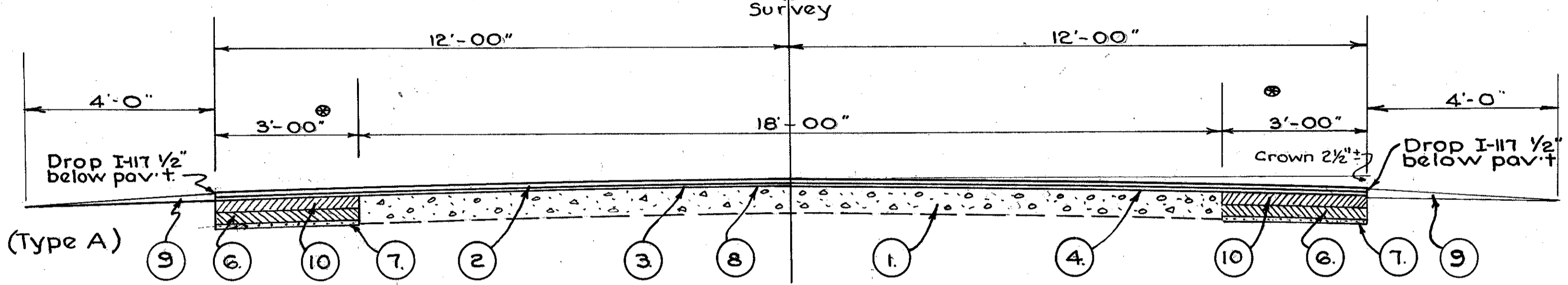
LAKE COUNTY  
SH. 520 SEC. PAINESVILLE (PT)  
SH. 744 SEC. PAINESVILLE (PT)  
& FAIRPORT (PT)

# TYPE - T-35 TYPICAL SECTIONS

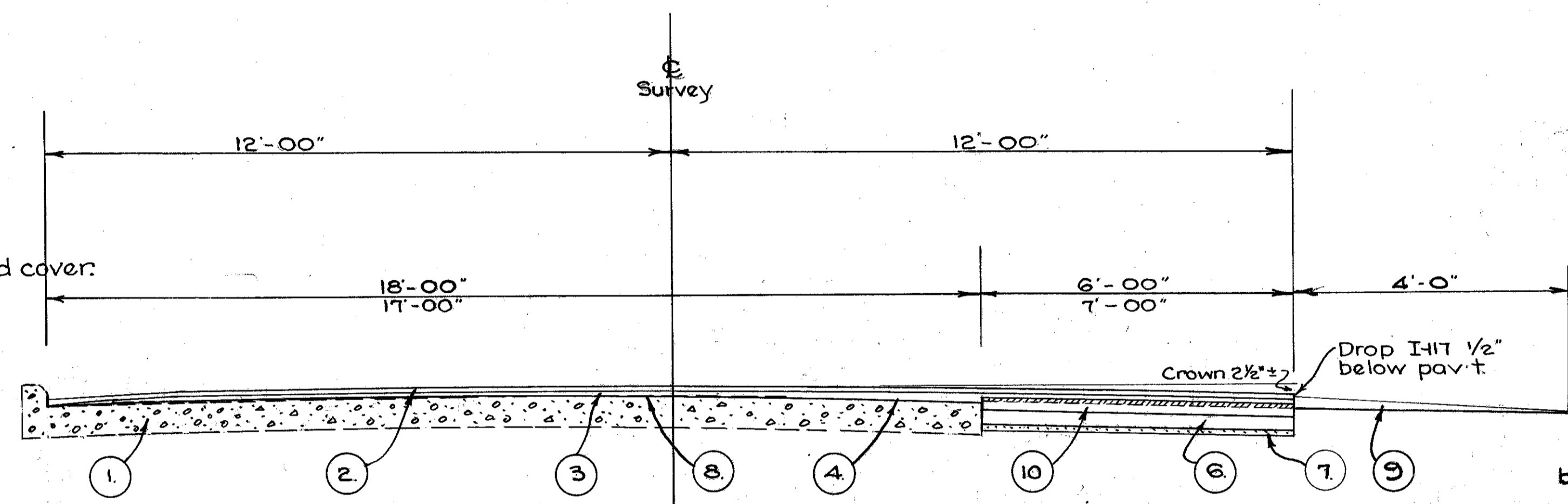
SCALE 1/2" = 1'

## INDEX

1. Existing Pavement.
2. T-35. 1/4" Asphaltic Concrete Surface Course (Type A)
3. B-35. 1/4" Minimum Asphaltic Conc. Leveling Course.
4. B-35. Filling Major Depressions
5. B-35. 3" Asphaltic Concrete. (2nd Base Course)
6. B-35. 3" Asphaltic Concrete. (1st Base Course)
7. I-19. 1/4" Insulation Course
8. T-30 Bituminous Prime Coat, Sec. M-5.5 M5-1 incl. sand cover.
9. I-17. Traffic Bound Side Approaches.
10. B-35. 3" Asphaltic Concrete Leveling Course.
11. B-35. 3/4" Asphaltic Concrete Leveling Course.



**WIDENING ON BOTH SIDES**  
\* Widening is Variable width. (See table on right)

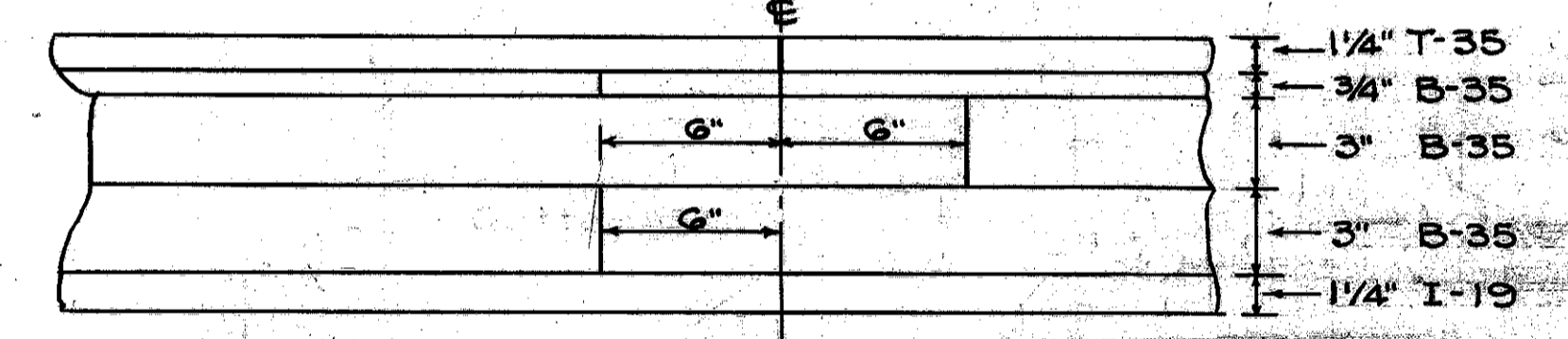


**WIDENING ON ONE SIDE ONLY**

STATION	TO STATION	USE EXIST.	WIDEN		NEW WIDTH	REMARKS
			LEFT	RIGHT		
0 + 00	1 + 4.5	Intersection	-	-	24'	Widen on Right Side Only
1 + 4.5	16 + 03.67	17	0	7	24'	See Detail Sheet 21
16 + 03.67	24 + 06.03	18	Variable	Variable	24'	See Detail Sheet 22
24 + 08	31 + 50	18	"	"	24'	See Detail Sheet 23
31 + 50	34 + 00	0	Special		24'	See Detail Sheet 23
34 + 00	37 + 39.5	0			24 to 20'	BRIDGE NO WORK REQUIRED
37 + 39.5	40 + 56.2	20				
40 + 56.2	42 + 00	0	Special		20 to 24'	See Detail Sheet 24
42 + 00	45 + 25				24'	See Detail Sheet 24
45 + 25	49 + 21.78	18	Special		24'	See Detail Sheet 25
49 + 21.78	61 + 39	18	3'-4'	Variable	to 38'	Widen & Resurface
61 + 39	86 + 28	18	4	2	24'	Widen & Resurface
86 + 28	89 + 96	28	0	0	28	Resurface Only
89 + 96	96 + 10	30	0	0	29.5	See Detail Sheet 3 Resurface

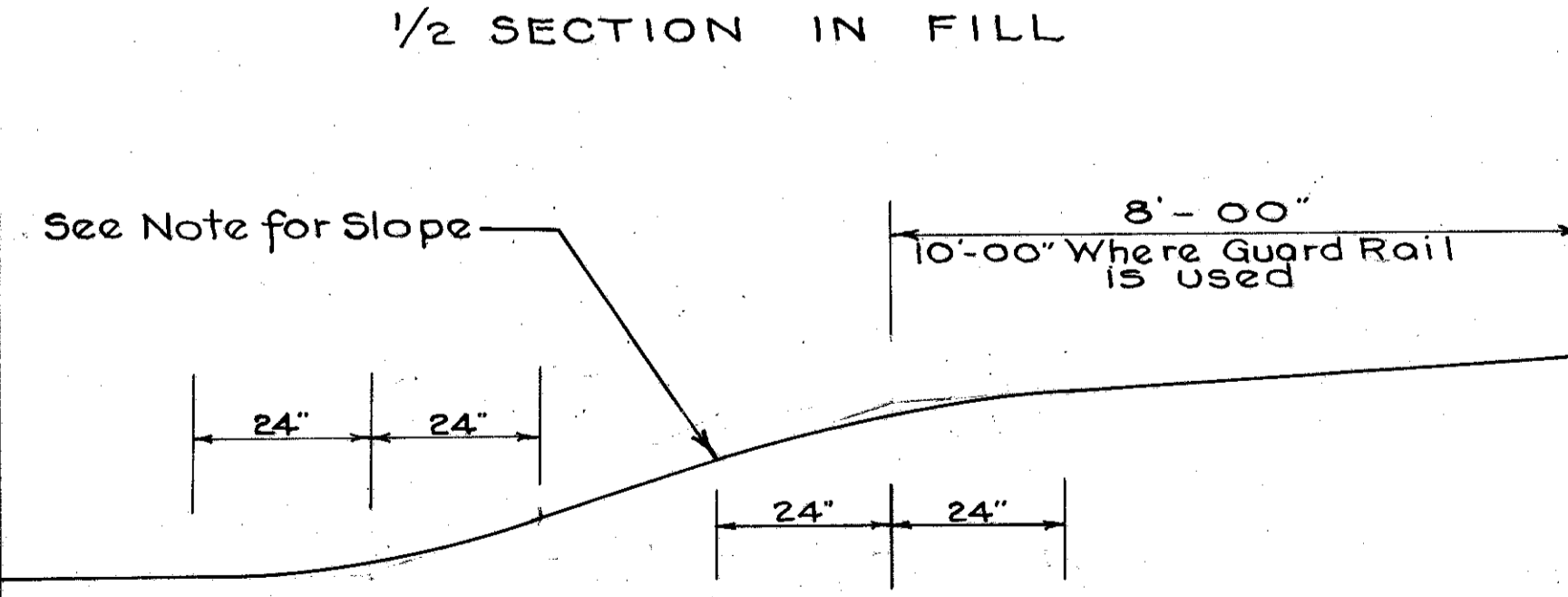
\* Equation Station: 24 + 06.03 = 24 + 08.32

## METHOD OF LAPPING JOINTS



Spread and compact first half of first 3" base course to a point 6" beyond the centerline  
 Spread and compact first half of second 3" base course to a point 6" short of the centerline.  
 Spread and compact second half of first 3" base course.  
 Spread and compact second half of second 3" base course.  
 Spread and compact leveling and surface courses, lapping as shown AFTER both sides of base courses are compacted.

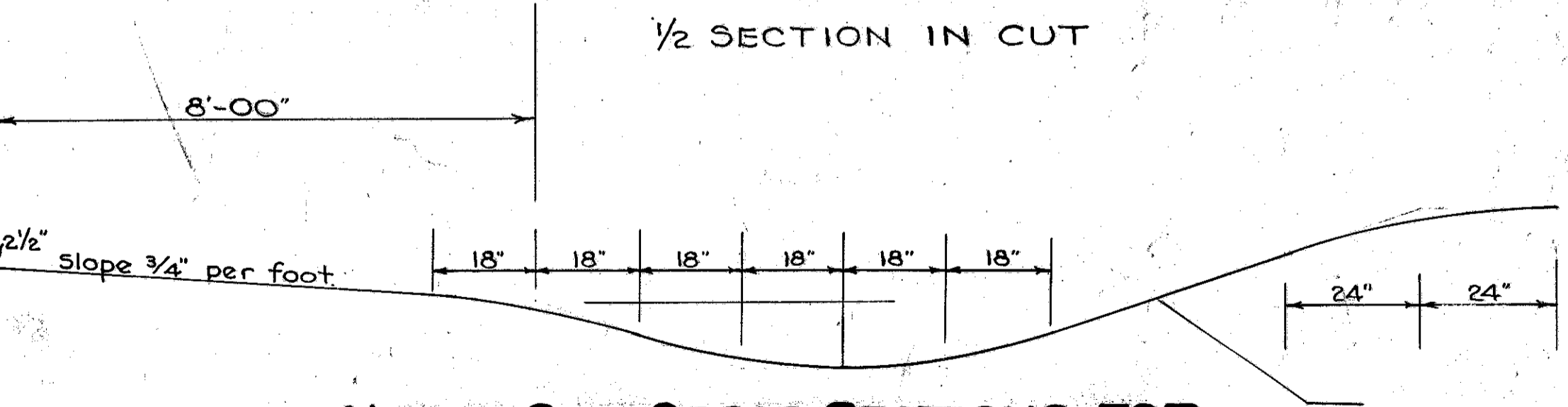
## 1/2 SECTION IN FILL



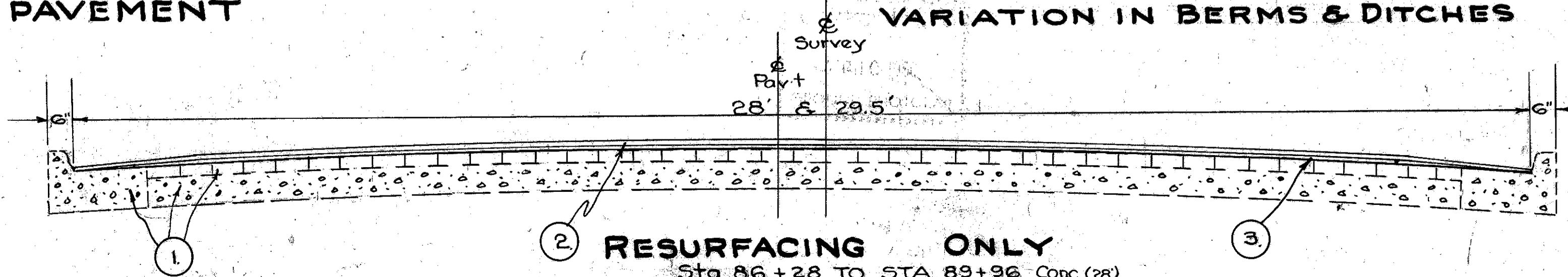
## SLOPE NOTE

Wherever the vertical distance from the edge of the berm to the top or toe of the slope is 5' or less, use 3:1 slope.  
 Wherever the distance is greater than 5', use 2:1 slope, except where shown differently on the cross sections.

## 1/2 SECTION IN CUT



NOTE: SEE CROSS SECTIONS FOR VARIATION IN BERMS & DITCHES



## RESURFACING ONLY

Sta. 86 + 28 TO STA. 89 + 96 Conc. (28)  
 Sta. 89 + 96 TO STA. 96 + 10 Brck (29.5)

## TYPICAL SECTIONS