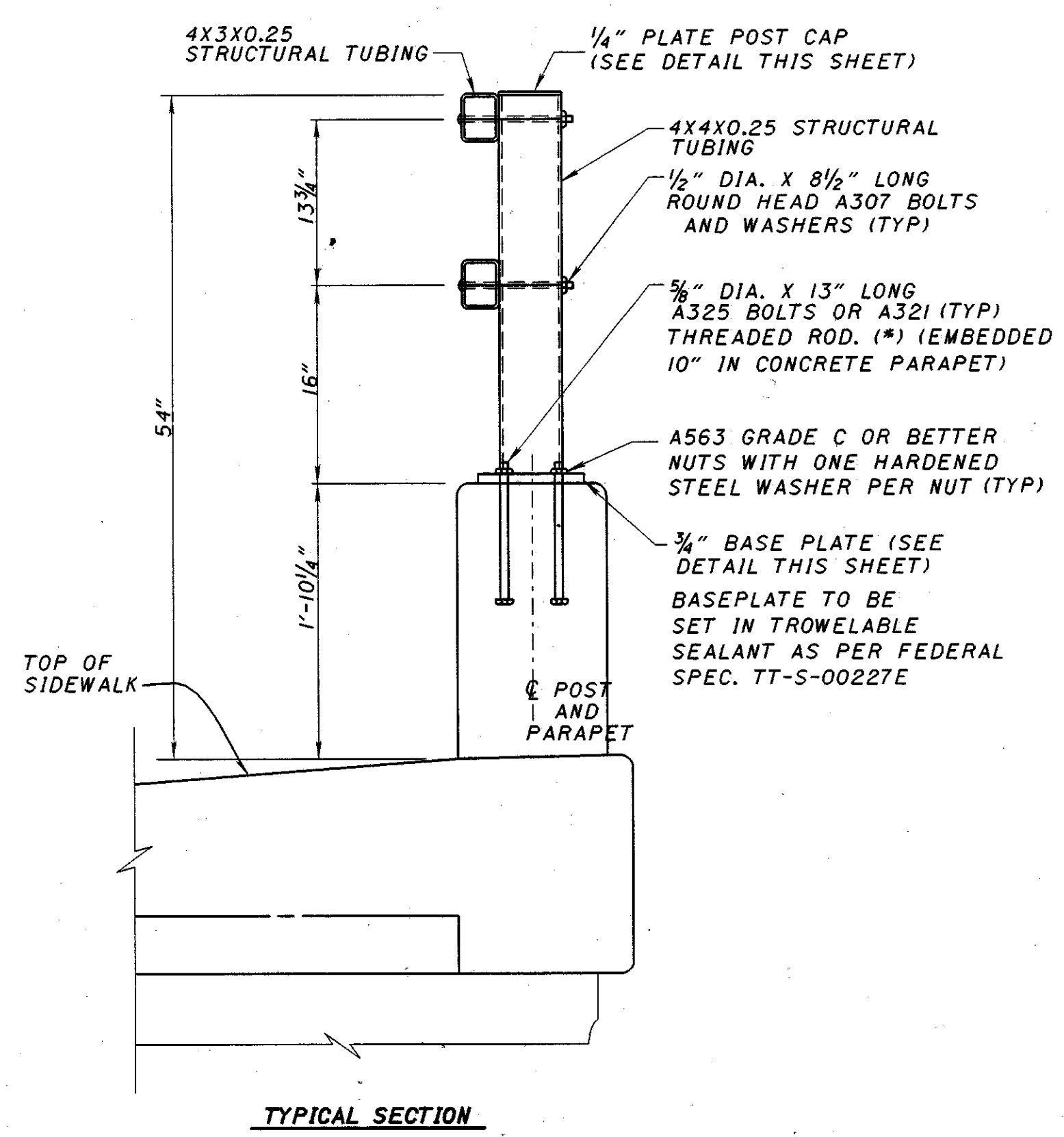
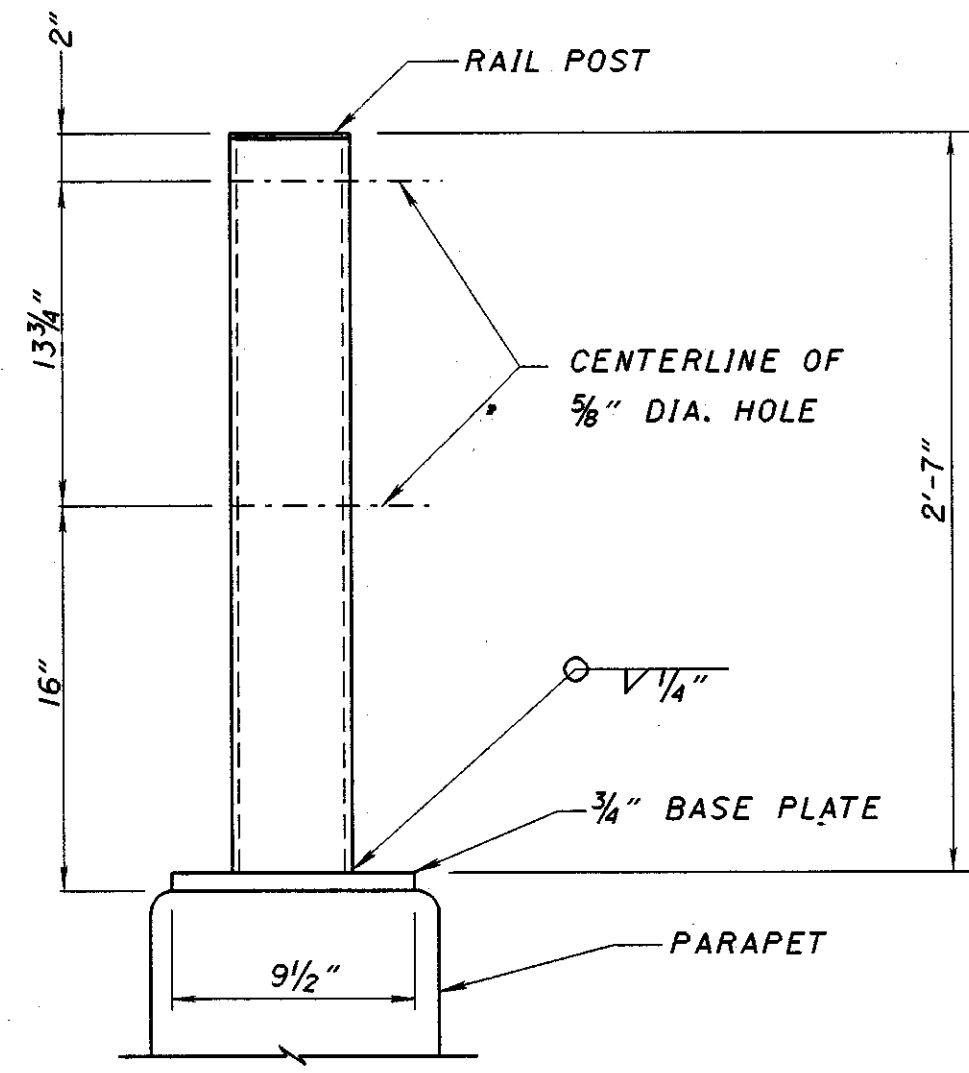


PLOTTED BY: brcoop1
 PLOTTED FROM: j:\br\Bgcocx\Bike.dgn
 FILENAME: dgn
 1
2
3
4
5
6
7
8
9
10
11
12
13
14
15
16
17
18
19
20
21
22
23
24
25
26
27
28
29
30
31
32
33
34
35
36
37
38
39
40
41
42
43
44
45
46
47
48
49
50
51
52
53
54
55
56
57
58
59
60
61
62
63
64
65
66
67
68
69
70
71
72
73
74
75
76
77
78
79
80
81
82
83
84
85
86
87
88
89
90
91
92
93
94
95
96
97
98
99
100
 PLOT SUBMITTED: 11-JUL-1995 14:55

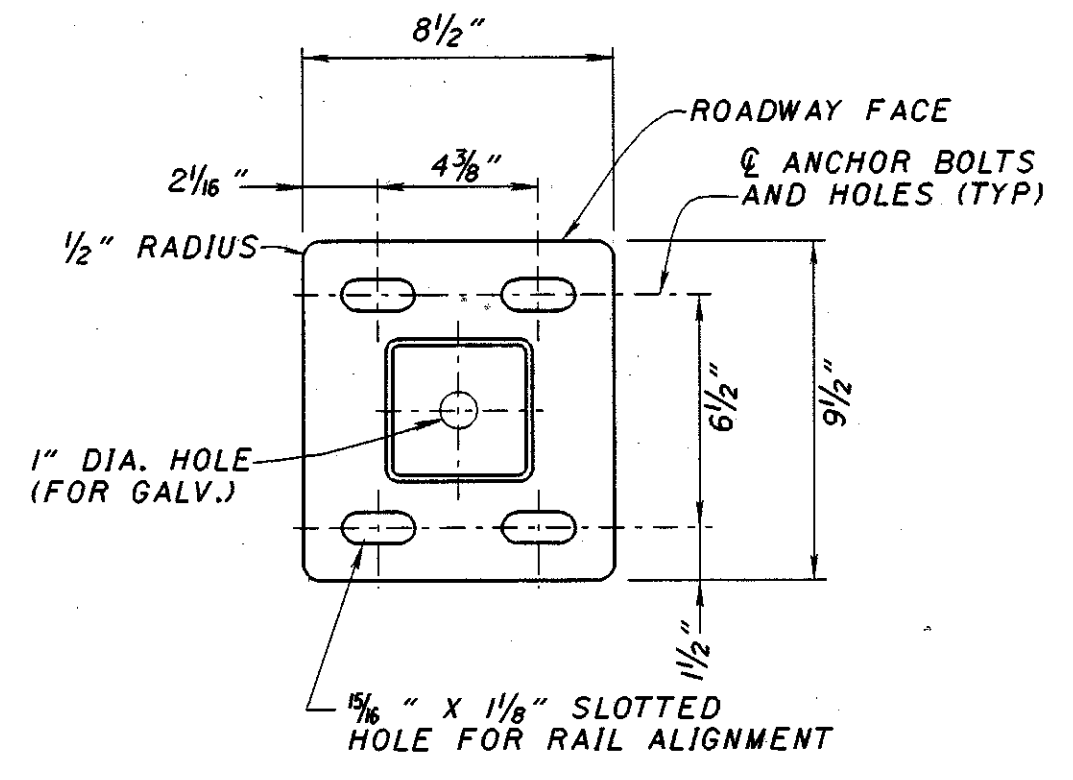


TYPICAL SECTION

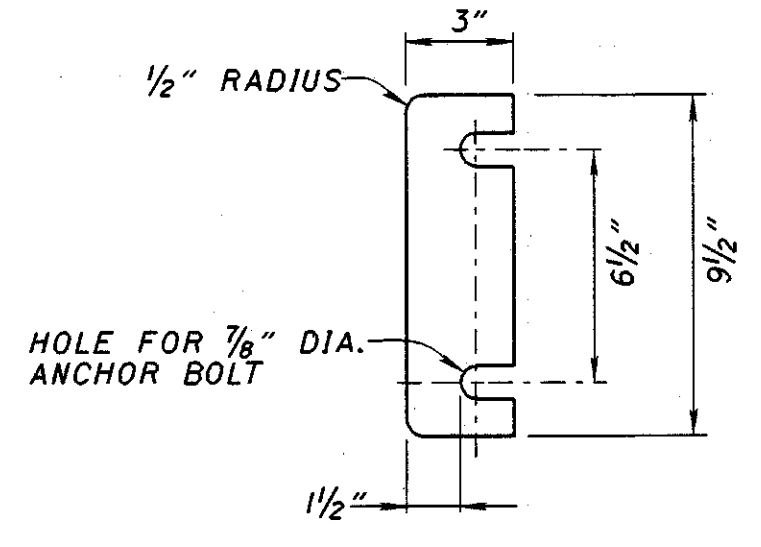
(*)- ANCHOR BOLTS SHALL CONFORM TO THE PHYSICAL PROPERTIES OF ASTM A325 EXCEPT THAT ELONGATION SHALL BE 10%. THE CHEMICAL PROPERTIES ARE WAIVED.



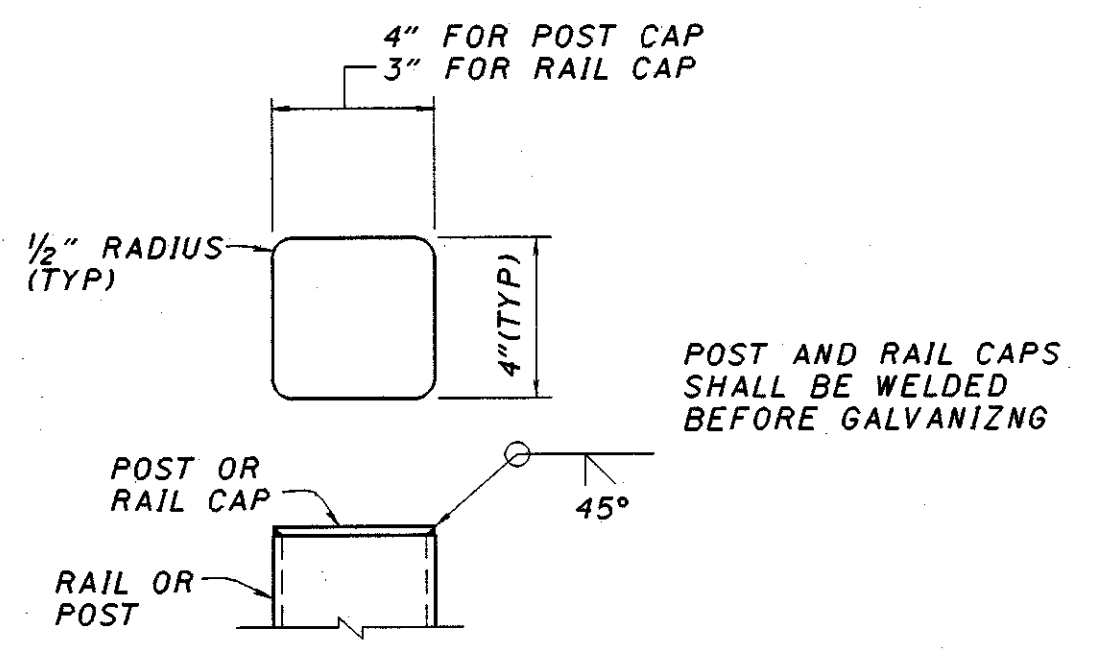
RAIL POST DETAIL



BASE PLATE DETAIL

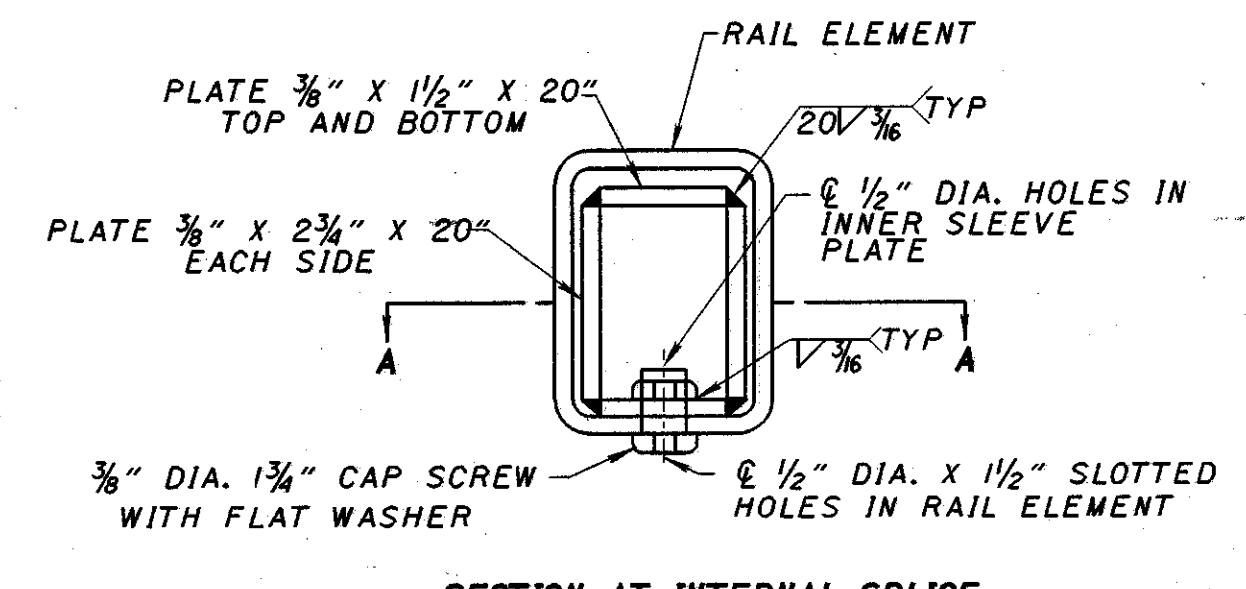


POST SHIM PLATES

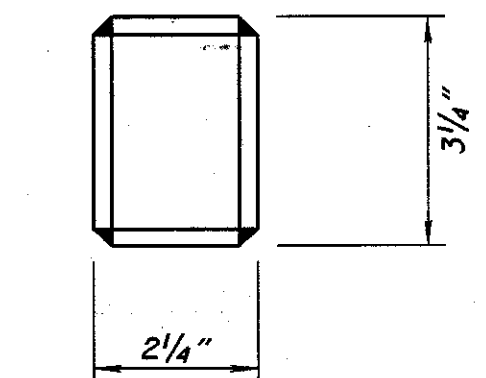


POST AND RAIL CAP DETAILS

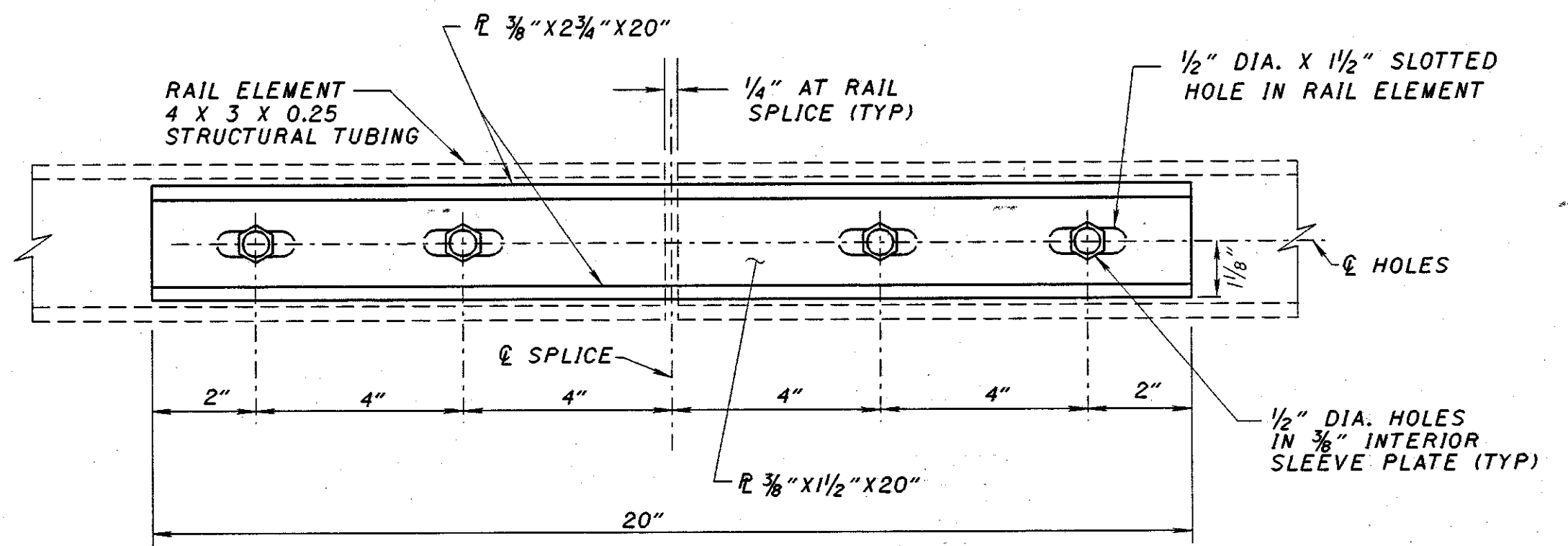
INSTALL ON ALL POST TOPS AND RAIL ENDS



SECTION AT INTERNAL SPLICE



FINISHED DIMENSIONS OF INNER SLEEVE



SECTION A-A

INTERNAL SPLICE DETAILS

ITEM 517-RAILING (CONCRETE PARAPET WITH STEEL RAILING), AS PER PLAN

CONCRETE PARAPET: CONCRETE SHALL CONFORM TO THE APPROPRIATE SECTIONS OF THE PROPOSAL NOTE FOR HIGH PERFORMANCE CONCRETE AND TO 517 OF THE CMS.

CONCRETE PARAPETS SHALL BE PLACED IN ALTERNATE SECTIONS BY THE USE OF BULKHEADS. CLOSING SECTIONS SHALL BE PLACED AFTER THE REMOVAL OF BULKHEADS AND AFTER PLACEMENT OF PREFORMED FILLER. THE FILLER SHALL BE FLUSH WITH THE SURFACE OF THE CONCRETE AND EXPOSED EDGES SHALL BE FREE OF MORTAR.

STEEL RAILING: RAILING POSTS AND RAILS SHALL CONFORM TO 707.10 OF THE CMS. BASE PLATES, SPLICE PLATES, TUBE CAPS AND SHIMS SHALL BE ASTM A-36.

TUBE SPLICES SHALL BE LOCATED SO THAT EACH RAIL SEGMENT IS CONNECTED TO NOT LESS THAN TWO POSTS.

SHIMS SHALL BE PROVIDED UNDER RAILING POSTS WHERE NECESSARY TO PROVIDE FOR THE VERTICAL ADJUSTMENT OF THE POST. SHIMS SHALL BE 1/16 INCH THICK AND CUT AS SHOWN IN THE PLAN DETAILS. WHERE MORE ADJUSTMENT OF THE POST IS REQUIRED FOR PLUMB ALIGNMENT THAN CAN BE CORRECTED BY ONE SHIM, THE POST SHALL BE REMOVED AND THE CONCRETE SURFACE CORRECTED BY GRINDING.

ALL STEEL RAILING PARTS, INCLUDING BOLTS, NUTS AND WASHERS SHALL BE GALVANIZED ACCORDING TO 711.02.