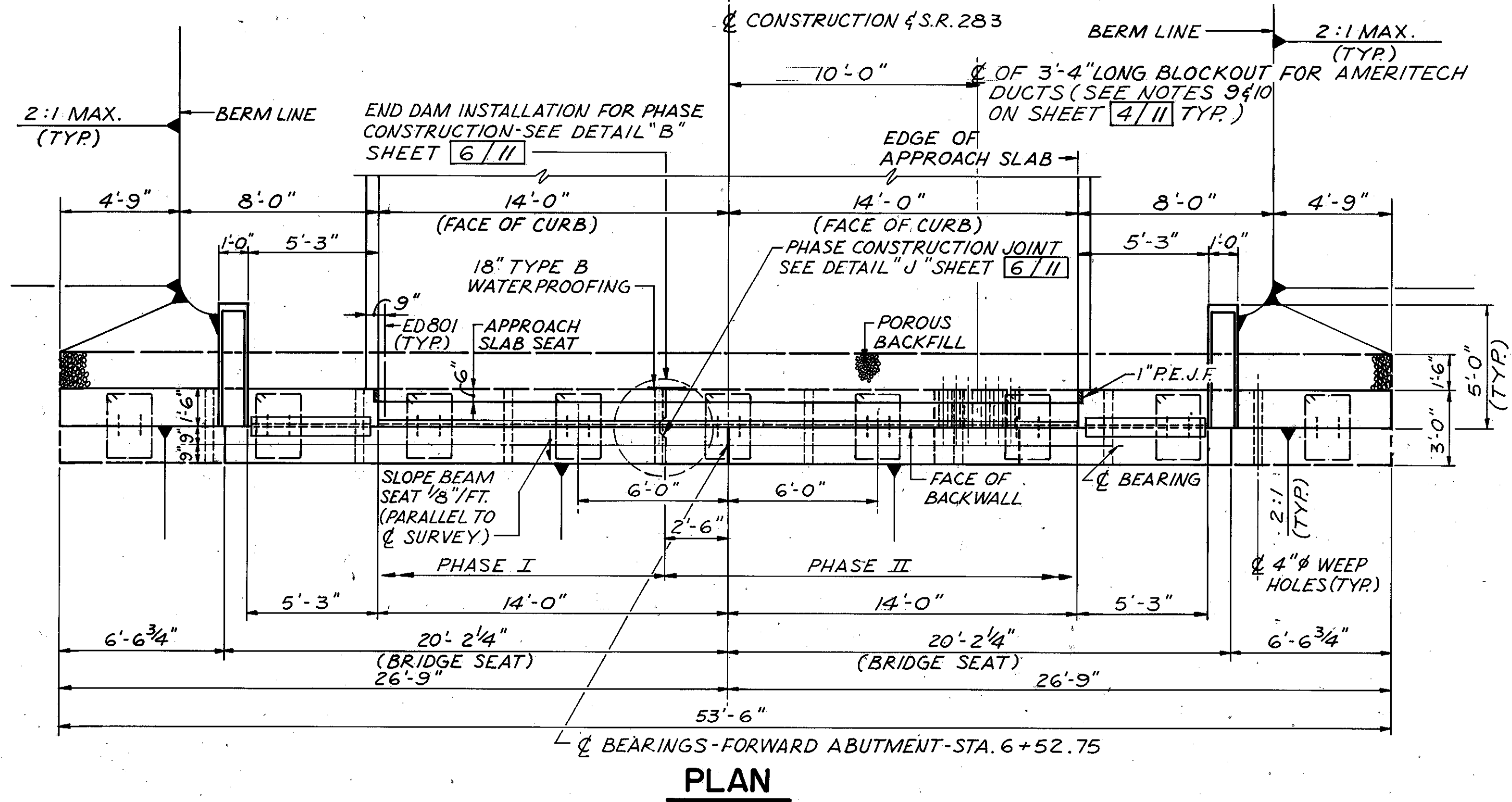
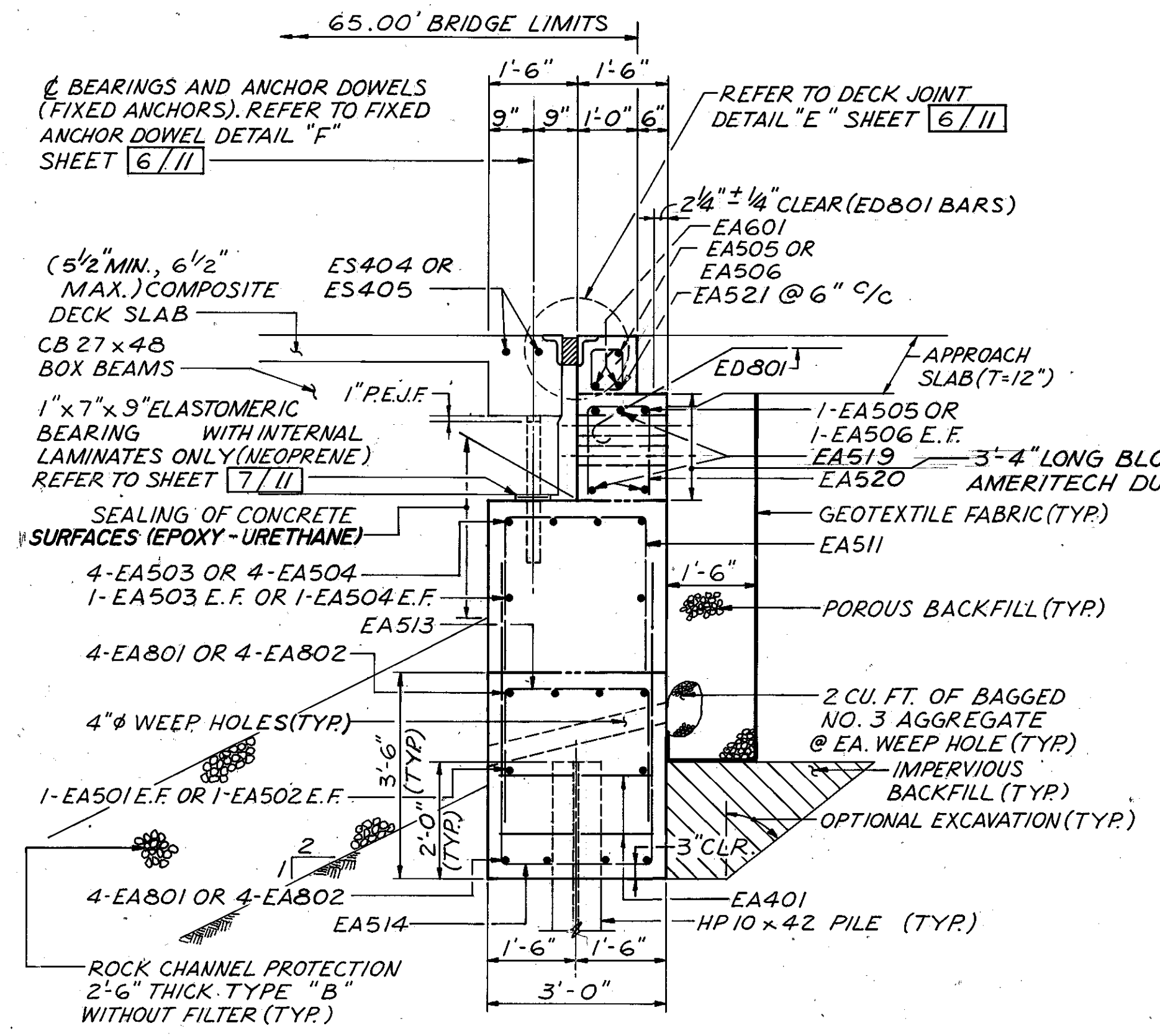


ELEVATIONS AND DIMENSIONS												
LOCATION	†A	B	†C	D	†E	†F	G	H	I	J	K	O
F. ABUT.	582.43	579.56	582.47	579.60	582.25	582.25	579.29	579.29	582.15	582.15	573.40	587.69

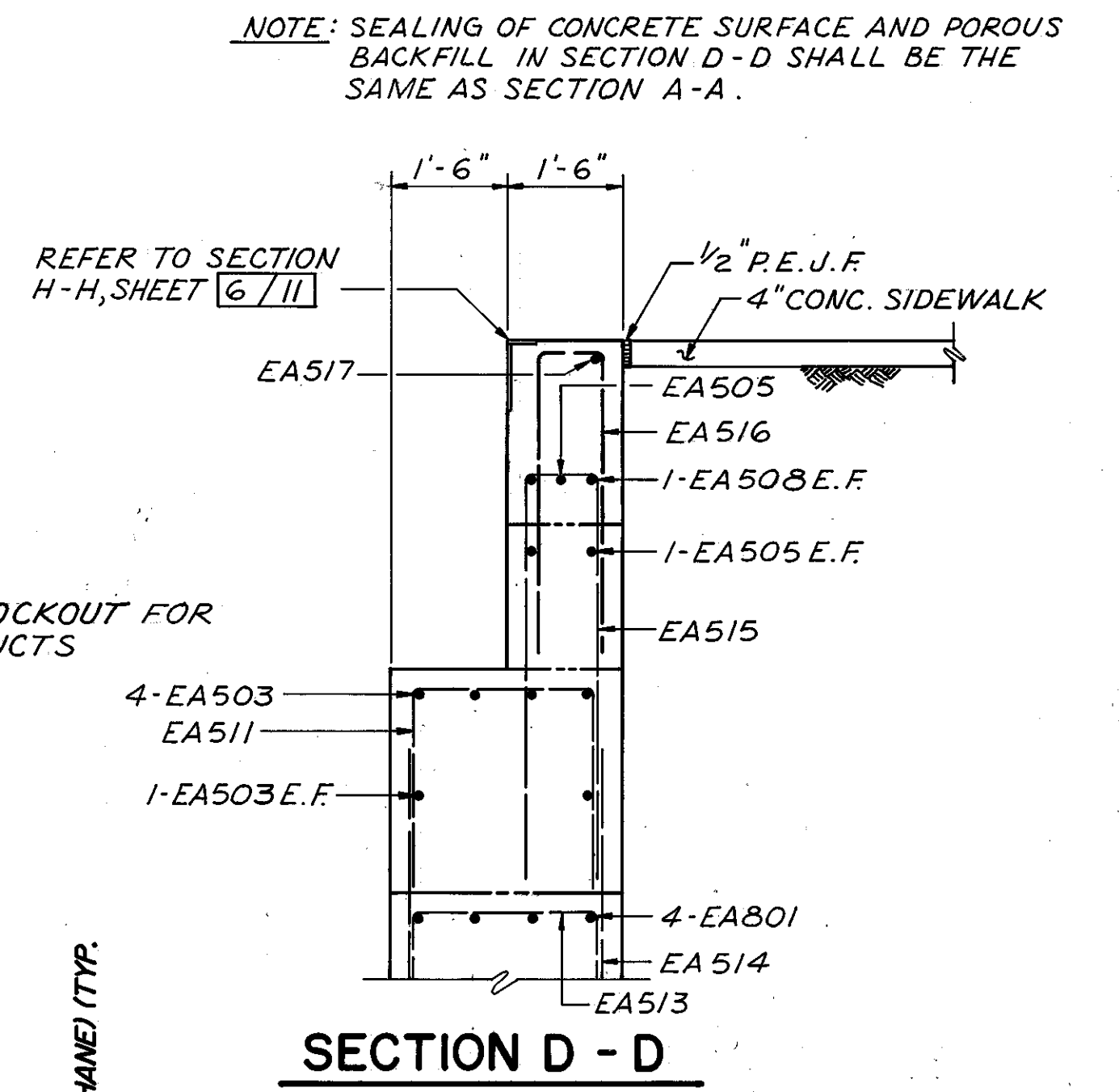


PLAN

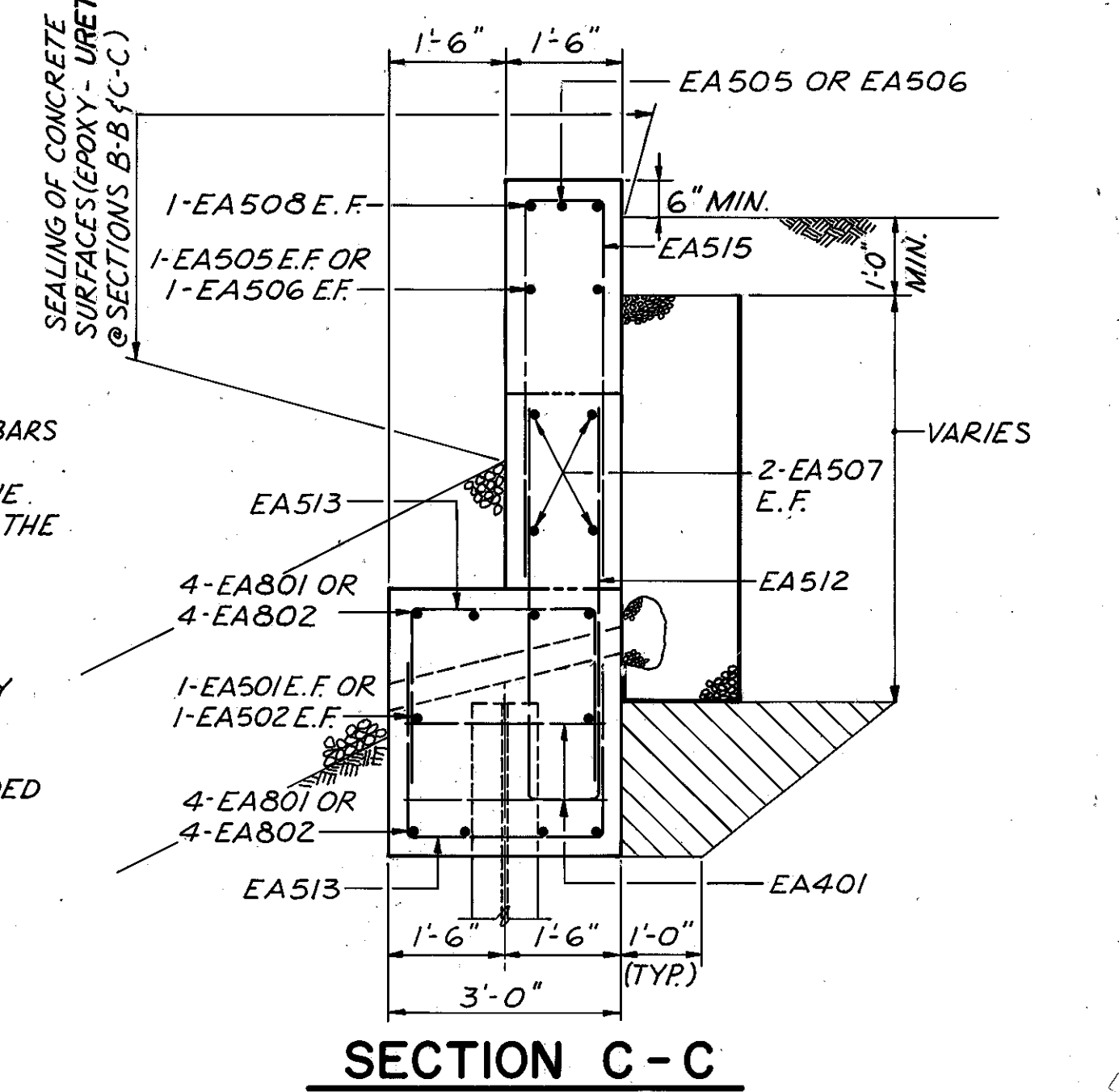


SECTION A - A
 NOTES

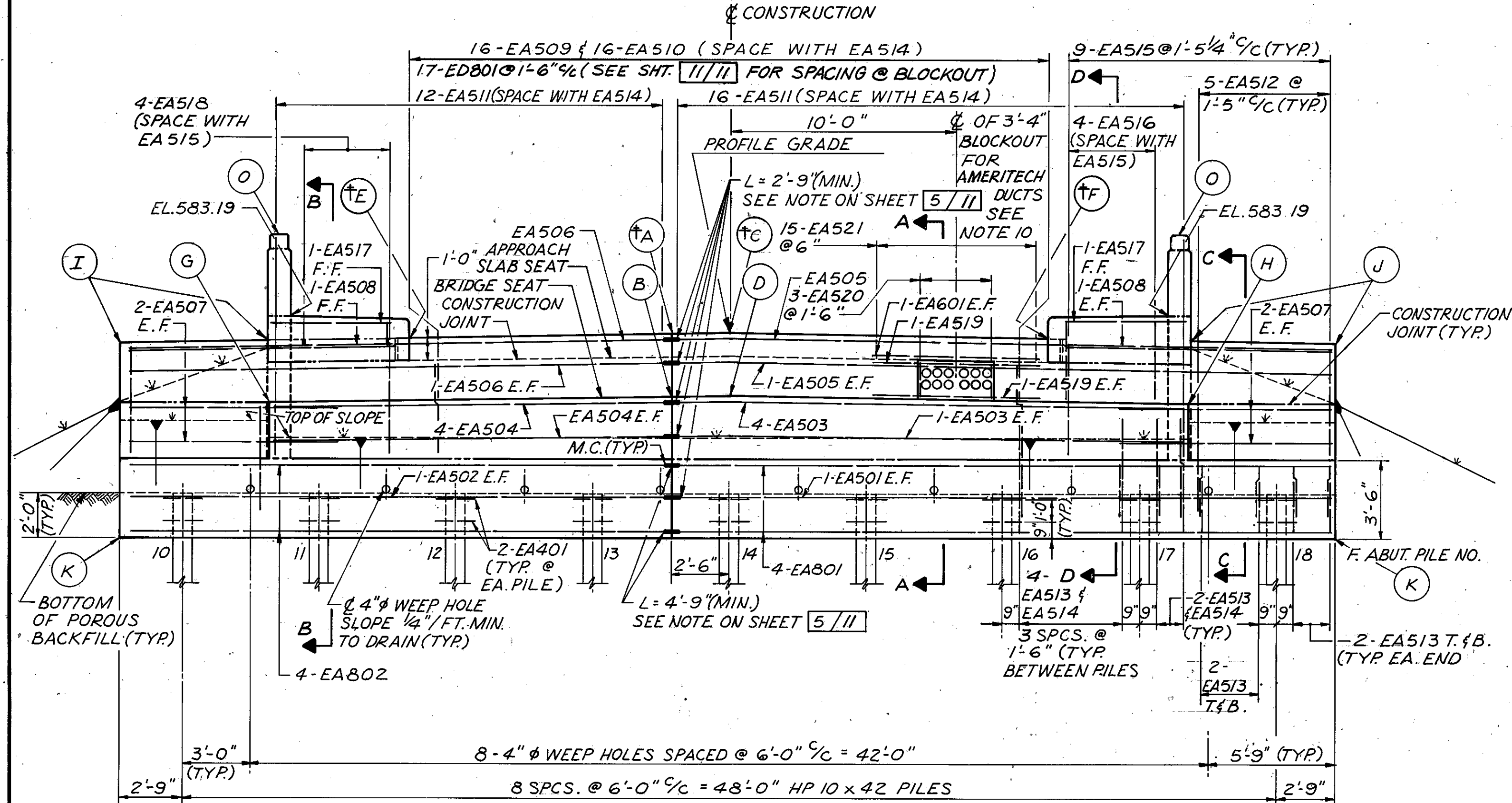
- MECHANICAL CONNECTORS: AN APPROVED TYPE OF MECHANICAL CONNECTOR FOR REINFORCING BARS SHALL BE PROVIDED. INSTALLATION OF CONNECTORS SHALL CONFORM WITH MANUFACTURER'S RECOMMENDED PROCEDURES. IF A DOWEL BAR SPLICE TYPE OF CONNECTOR IS FURNISHED, THE MINIMUM DOWEL BAR LENGTH TO BE INCLUDED WITH THE CONNECTOR SHALL BE AS GIVEN BY THE DIMENSION "L" SHOWN ON THE PLANS.
 CONNECTORS AND DOWEL BARS USED WITH EPOXY COATED BARS SHALL BE EPOXY COATED. COATING FOR BOTH CONNECTORS AND BARS SHALL CONFORM TO THE SAME SPECIFICATIONS. COATINGS WHICH HAVE BEEN DAMAGED OR WHICH OTHERWISE DO NOT MEET SPECIFICATIONS WITH RESPECT TO COLOR, CONTINUITY AND UNIFORMITY MAY BE REPAIRED AS DIRECTED BY THE ENGINEER OR THEY SHALL BE REPLACED WITH MATERIAL WHICH MEETS THE SPECIFICATIONS.
 CONNECTORS AND DOWEL BAR EXTENSIONS SHALL CONFORM WITH ITEM 509 AND BE INCLUDED IN THE BID PRICE PER POUND FOR ITEM 509.
- FOR ADDITIONAL NOTES AND SECTIONS SEE SHEET 4/II.



SECTION D - D



SECTION C - C



ELEVATION

JOHN E. FOSTER AND ASSOCIATES, INC. 5/II
 2999 Payne Ave., Cleveland, Ohio 44114
FORWARD ABUTMENT PLAN, ELEVATION, SECTIONS & NOTES
 BRIDGE NO. LAK-283-II.65
 SR 283 OVER MENTOR MARSH
 LAKE COUNTY STA. 5+89.50
 STA. 6+54.50

DESIGNED	DRAWN	TRACED	CHECKED	REVIEWED	DATE	REVISED
S.I.A.	D.M.T.	-	L.I.	H.S.S.	1/93	ODOT BRIDGES 2/95