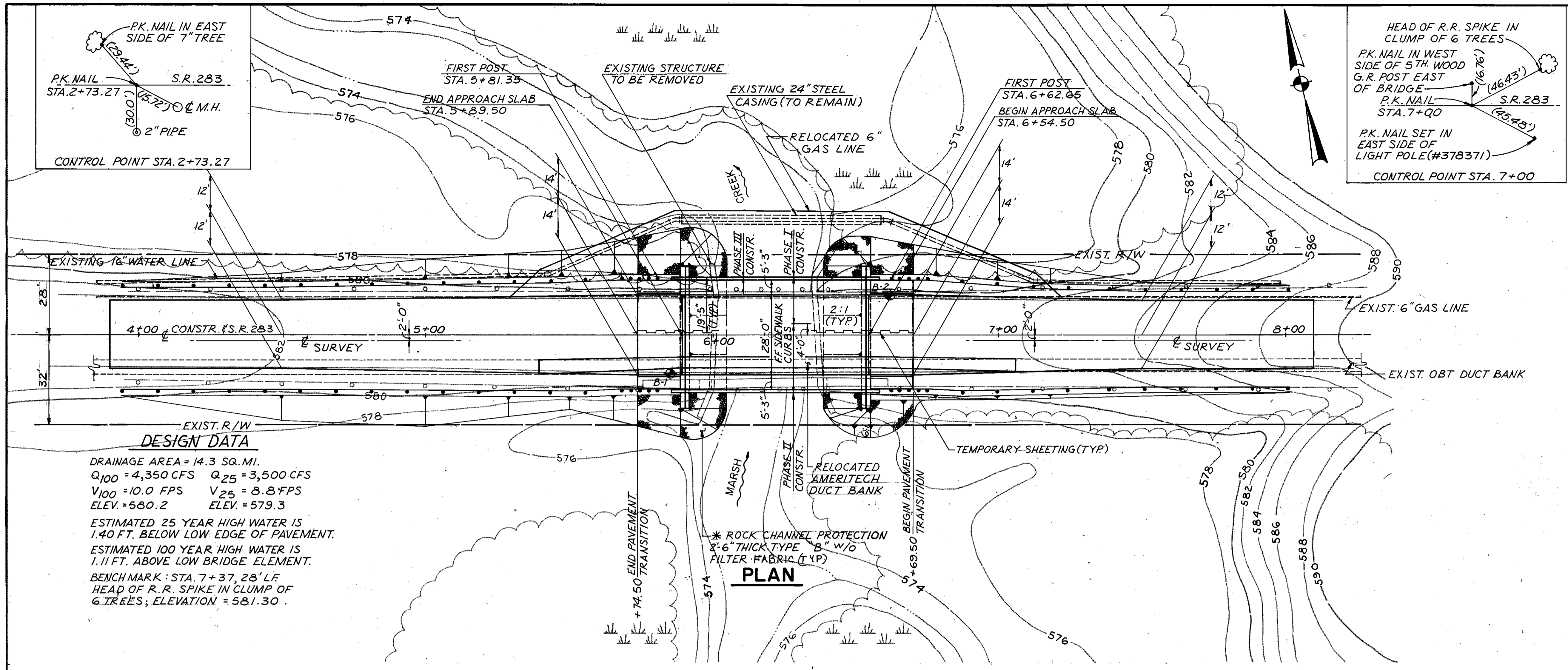


LAKE COUNTY
 LAK-283-II.65



DESIGN DATA

DRAINAGE AREA = 14.3 SQ. MI.
 $Q_{100} = 4,350$ CFS $Q_{25} = 3,500$ CFS
 $V_{100} = 10.0$ FPS $V_{25} = 8.8$ FPS
 ELEV. = 580.2 ELEV. = 579.3

ESTIMATED 25 YEAR HIGH WATER IS 1.40 FT. BELOW LOW EDGE OF PAVEMENT.
 ESTIMATED 100 YEAR HIGH WATER IS 1.11 FT. ABOVE LOW BRIDGE ELEMENT.

BENCH MARK: STA. 7+37, 28' L.F. HEAD OF R.R. SPIKE IN CLUMP OF 6 TREES; ELEVATION = 581.30.

EARTHWORK: LIMITS SHOWN ARE APPROXIMATE. ACTUAL SLOPES SHALL CONFORM TO PLAN CROSS SECTIONS.

EXISTING STRUCTURE

TYPE: REINFORCED CONCRETE SLAB ON REINFORCED CONCRETE RECTANGULAR BEAMS, REINFORCED CONCRETE ABUTMENTS

SPAN: 132.2' @ ABUTMENT WALLS
 ROADWAY: 29.5' @ GUARDRAIL
 SKEW: 0° 00' 00"

WEARING SURFACE: BITUMINOUS
 SIDEWALK: 2'-10" @ SOUTH SIDE ONLY
 APPROACH SLABS: NONE
 ALIGNMENT: TANGENT
 CONDITION: FAIR
 DISPOSITION: TO BE REMOVED
 STRUCTURE FILE NO.: 4305701

PROPOSED STRUCTURE

TYPE: SINGLE SPAN COMPOSITE PRESTRESSED CONCRETE BOX BEAM WITH REINFORCED CONCRETE SPILL THROUGH ABUTMENTS.

SPAN: 61'-6" @ BEARING TO @ BEARING
 ROADWAY: 28'-0" @ SIDEWALK CURBS
 LOADING: HS-20-44 AND ALTERNATE MILITARY LOADING.
 SKEW: 0° 00' 00"

WEARING SURFACE: 5 1/2" COMPOSITE CONCRETE
 SIDEWALKS: 5'-3" EACH SIDE
 APPROACH SLAB: AS-1-81 (15' LONG)
 ALIGNMENT: TANGENT
 CROWN: 3/16" PER FT.

REVIEWED BY BURGESS & NIPLE, LTD.
 R.M.K. 06-15-94

JOHN E. FOSTER AND ASSOCIATES, INC.
 2999 Payne Ave., Cleveland, Ohio 44114

SITE PLAN
 BRIDGE NO. LAK-283-II 65
 SR 283 OVER
 MENTOR MARSH

DESIGNED	DRAWN	TRACED	CHECKED	REVIEWED	DATE	REVISED
H.W.R.	D.M.T.	-	H.S.S.	V.J.D.	1/93	

