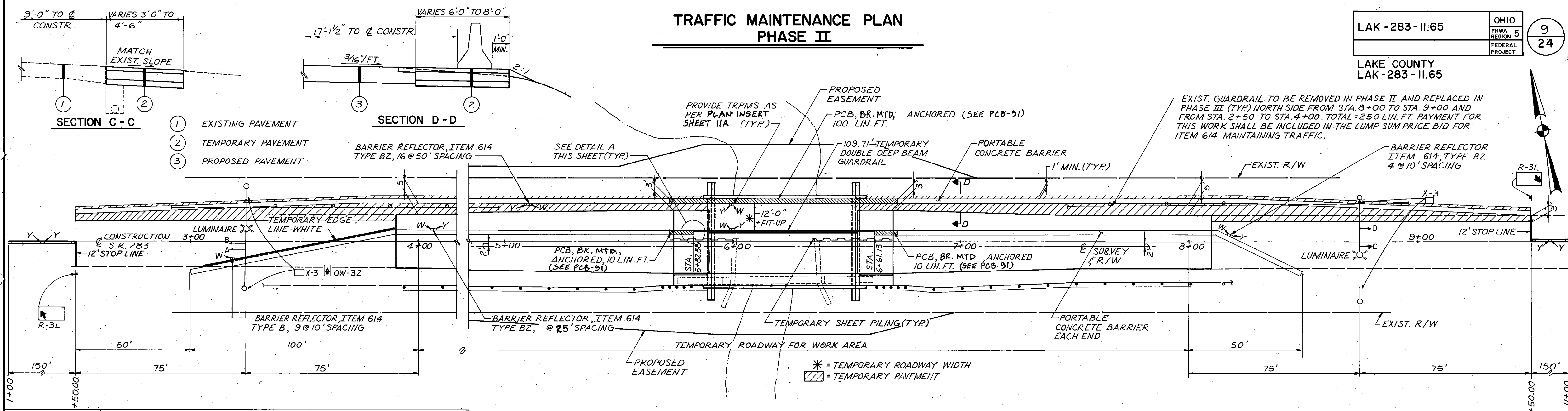


# TRAFFIC MAINTENANCE PLAN PHASE II

LAKE COUNTY  
LAK -283 -II.65



**ITEM 615 - TEMPORARY PAVEMENT, CLASS A**

**PHASE II**

STA. 1+50 TO STA. 4+00	= 250 L.F.
STA. 8+00 TO STA. 10+50	= 250 L.F.
<b>TOTAL</b>	<b>= 500 L.F.</b>

AVERAGE WIDTH =  $(\frac{150+75}{2}) = 8.5'$

AREA =  $500 \times 8.5 \div 9 = 472.22$  S.Y.

STA. 4+00 TO STA. 5+74.50 = 174.50 L.F.

STA. 6+69.50 TO STA. 8+00 = 130.50 L.F.

**TOTAL** = 305.00 L.F.

WIDTH =  $(8+6) \div 2 = 7'$

AREA =  $305 \times 7 \div 9 = 237.22$  S.Y.

STA. 5+74.50 TO STA. 5+89.50 = 15 L.F.

STA. 6+54.50 TO STA. 6+69.50 = 15 L.F.

**TOTAL** = 30 L.F.

WIDTH = 5.5'

AREA =  $30 \times 5.5 \div 9 = 18.33$  S.Y.

**PHASE I**

STA. 3+50 TO STA. 4+10	= 60 L.F.
STA. 8+40 TO STA. 9+00	= 60 L.F.
<b>TOTAL</b>	<b>= 120 L.F.</b>

WIDTH =  $(3+4.5) \div 2 = 3.75'$

AREA =  $120 \times 3.75 \div 9 = 50$  S.Y.

STA. 4+10 TO STA. 6+02.8 = 192.8 L.F.

STA. 6+39 TO 8+40 = 201.0 L.F.

**TOTAL** = 393.8 L.F.

WIDTH = 4.5'

AREA =  $393.8 \times 4.5 \div 9 = 196.9$  S.Y.

**TOTAL** = 974.67 S.Y.

USE 975 S.Y.

**ITEM 622 - PORTABLE CONCRETE BARRIER, 32"**

**PHASE III**

STA. 2+00 TO STA. 10+50	= 850 L.F.
-------------------------	------------

**PHASE II**

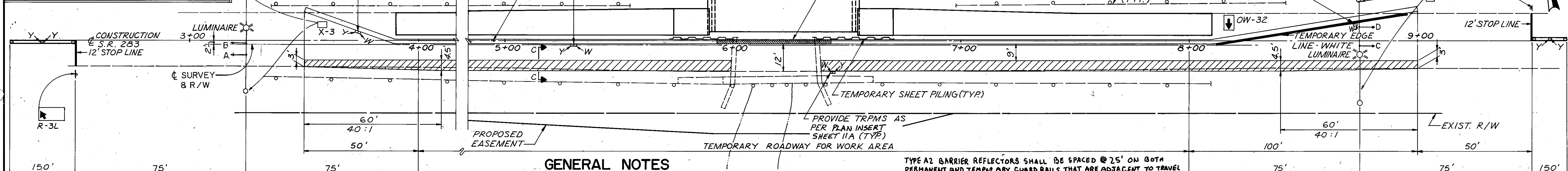
STA. 2+50.9 TO STA. 5+70.9	= 320 L.F.
STA. 6+70.9 TO STA. 9+50.9	= 280 L.F.
STA. 3+00 TO STA. 5+73	= 273 L.F.
STA. 6+71 TO STA. 8+50	= 179 L.F.
<b>SUB-TOTAL</b>	<b>= 1,052 L.F.</b>

**PHASE I**

STA. 3+50 TO STA. 5+96	= 246 L.F.
STA. 6+45 TO STA. 9+00	= 255 L.F.
<b>SUB-TOTAL</b>	<b>= 501 L.F.</b>

**TOTAL** = 2,403 L.F.

USE 2,405 L.F.



### GENERAL NOTES

REFER TO STANDARD DRAWINGS:  
PLAN INSERT SHEETS 11A, 11B; MT-96.25, MT-99.10, MC-9.2 AND PCB-91.  
REFER TO GENERAL NOTES ON SHEET 4 OF 22.

**TEMPORARY BRIDGE RAILING:**  
TEMPORARY DOUBLE DEEP BEAM RAILING SHALL BE INCLUDED IN THE LUMP SUM BID FOR ITEM 614 - MAINTAINING TRAFFIC.

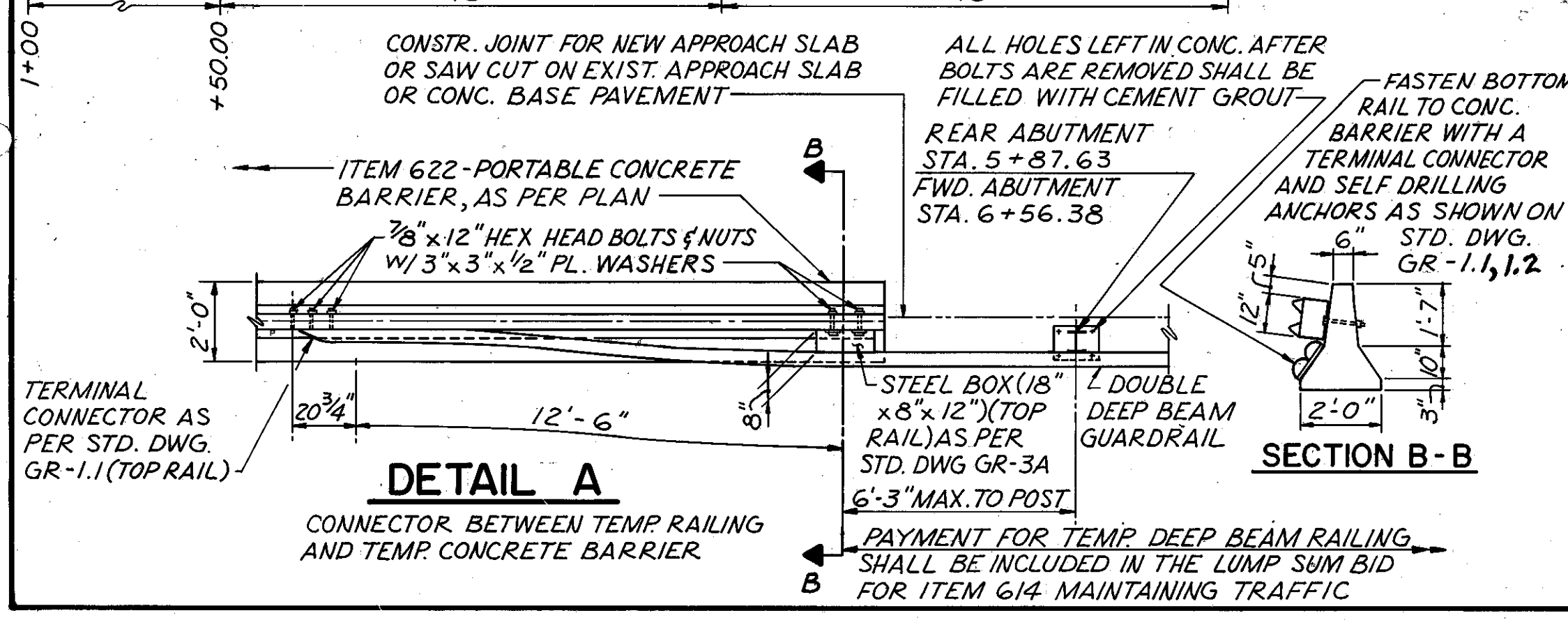
**ITEM 615 - TEMPORARY PAVEMENT:**  
THE TEMPORARY PAVEMENT COURSE COMPOSITION FOR THIS PROJECT SHALL CONSIST OF THE FOLLOWING:  
1/2" OF ITEM 404 ASPHALT CONCRETE  
1/2" OF ITEM 402 ASPHALT CONCRETE  
6" OF ITEM 301 BITUMINOUS AGGREGATE BASE  
4" OF ITEM 304 AGGREGATE BASE

**ANCHORS REQUIRED: 2 PER 10' CONCRETE BARRIER SECTION**

PHASE I SUB-TOTAL = 10 EACH  
PHASE II SUB-TOTAL = 24 EACH  
**TOTAL = 34 EACH.**

TYPE A2 BARRIER REFLECTORS SHALL BE SPACED @ 25' ON BOTH PERMANENT AND TEMPORARY GUARD RAILS THAT ARE ADJACENT TO TRAVEL LANE.  
OBJECT MARKERS SHALL BE PLACED BACK TO BACK, CENTERED BETWEEN THE TYPE A AND TYPE B2 BARRIER REFLECTORS.

MAINTENANCE OF TRAFFIC QUANTITIES					
ITEM	ITEM EXT.	TOTAL	UNIT	DESCRIPTION	
614	13300	26	EACH	BARRIER REFLECTOR, TYPE B	
614	13302	91	EACH	BARRIER REFLECTOR, TYPE B2	
614	11000	LUMP	SUM	MAINTAINING TRAFFIC	
614	13350	234	EACH	OBJECT MARKER	
614	21300	0.02	MILE	TEMPORARY CENTERLINE, CLASS I, 740.05, TYPE C	
614	22300	0.03	MILE	TEMPORARY EDGE LINE, CLASS I, 740.05, TYPE C	
614	26600	24	LIN.FT.	TEMPORARY STOP LINE, CLASS I, 740.05, TYPE C	
615	20000	975	SQ. YD.	TEMPORARY PAVEMENT, CLASS A	
622	40020	2360	LIN.FT.	PORTABLE CONCRETE BARRIER, 32"	
622	40050	170	LIN.FT.	PORTABLE CONCRETE BARRIER, 32", BRIDGE MOUNTED	
614	21400	0.13	MILE	TEMPORARY CENTER LINE, CLASS 2	
614	13202	52	EACH	BARRIER REFLECTOR, TYPE A2	
614	12800	1482	EACH	TEMPORARY RAISED PAVEMENT MARKER	



JOHN E. FOSTER AND ASSOCIATES, INC.  
2999 Payne Ave., Cleveland, Ohio 44114

## TRAFFIC MAINTENANCE PLAN

BRIDGE NO. LAK - 283 - II.65  
SR 283 OVER  
MENTOR MARSH

LAKE COUNTY

DESIGNED	DRAWN	TRACED	CHECKED	REVIEWED	DATE	REVISED
H.W.R.	D.M.T.	-	S.N.A.	H.S.S.	1/93	