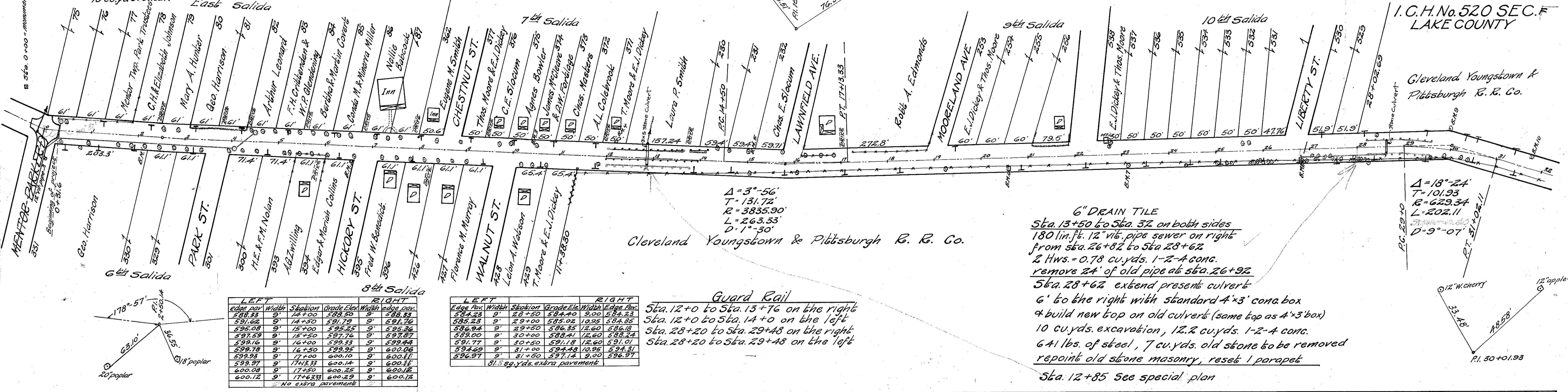


Sta. 0 to 4+ = 406' of 10" vit. pipe sewer  
 3 Inlet basins, 1-10'x10', 1-12'x10'  
 92'-10" encased vit. pipe - 9.5 cu.yds. 1-3-6 conc.  
 15 cu.yds. excav.



| LEFT     |       | RIGHT    |             |
|----------|-------|----------|-------------|
| edge par | Width | Station  | Grade Elev. |
| 598.23   | 9'    | 12+00    | 598.20      |
| 591.62   | 9'    | 14+50    | 591.79      |
| 595.08   | 9'    | 15+00    | 595.25      |
| 597.59   | 9'    | 15+50    | 597.76      |
| 599.16   | 9'    | 16+00    | 599.33      |
| 599.78   | 9'    | 16+50    | 599.95      |
| 599.95   | 9'    | 17+00    | 600.10      |
| 599.97   | 9'    | 17+33    | 600.14      |
| 600.08   | 9'    | 17+50    | 600.25      |
| 600.12   | 9'    | 17+63.33 | 600.29      |
| 600.12   | 9'    |          | 600.12      |

| LEFT     |       | RIGHT   |             |
|----------|-------|---------|-------------|
| Edge Par | Width | Station | Grade Elev. |
| 594.23   | 9'    | 28+50   | 594.49      |
| 585.83   | 9'    | 29+00   | 585.02      |
| 586.94   | 9'    | 29+50   | 586.35      |
| 589.00   | 9'    | 30+00   | 588.41      |
| 591.77   | 9'    | 30+60   | 591.18      |
| 594.69   | 9'    | 31+00   | 594.49      |
| 596.97   | 9'    | 31+00   | 597.14      |
| 596.97   | 9'    |         | 597.14      |

**6" DRAIN TILE**  
 Sta. 13+50 to Sta. 32 on both sides  
 180 lin. ft. 12" vit. pipe sewer on right  
 from Sta. 26+82 to Sta. 28+62  
 2 Hws. = 0.78 cu. yds. 1-2-4 conc.  
 remove 24' of old pipe at Sta. 26+92  
 Sta. 28+62 extend present culvert  
 6' to the right with standard 4'x3' conc. box  
 & build new top on old culvert (same top as 4'x3' box)  
 10 cu. yds. excavation, 12.2 cu. yds. 1-2-4 conc.  
 641 lbs. of steel, 7 cu. yds. old stone to be removed  
 repoint old stone masonry, reset 1 parapet  
 Sta. 12+85 see special plan

|   |   |  |   |  |   |   |   |   |  |
|---|---|--|---|--|---|---|---|---|--|
| B.M. #1 Sta. 2+16<br>Spike in 15" poplar<br>24' to R. of $\Phi$<br>Elev. = 603.57 | B.M. #2 Sta. 6+63<br>Spike in 15" poplar<br>22' to R. of $\Phi$<br>Elev. = 601.05 | B.M. #3 Sta. 10+43<br>Spike in 15" poplar<br>25' to R. of $\Phi$<br>Elev. = 603.62 | B.M. #4 Sta. 12+29<br>Spike in 12" walnut<br>60' L. of $\Phi$<br>Elev. = 584.27 | B.M. #5 Sta. 15+01<br>Spike in 12" walnut<br>23' to L. of $\Phi$<br>Elev. = 598.78 | B.M. #6 Sta. 20+61<br>Spike in 30" elm<br>24' to R. of $\Phi$<br>Elev. = 600.54 | B.M. #7 Sta. 23+15<br>Spike in 15" elm<br>24' to R. of $\Phi$<br>Elev. = 597.63 | B.M. #8 Sta. 26+85<br>Spike in 15" elm<br>24' to R. of $\Phi$<br>Elev. = 582.76 | B.M. #9 Sta. 29+89<br>Spike in 8" W. cherry<br>60' L. of $\Phi$<br>Elev. = 589.87 | B.M. #10 Sta. 31+74<br>Spike in 14" maple<br>25' to L. of $\Phi$<br>Elev. = 601.20 |
|---|---|--|---|--|---|---|---|---|--|

