

# PAVEMENT MARKING DETAILS

LAKE COUNTY  
LAK-283-0.000  
**metric**  
units

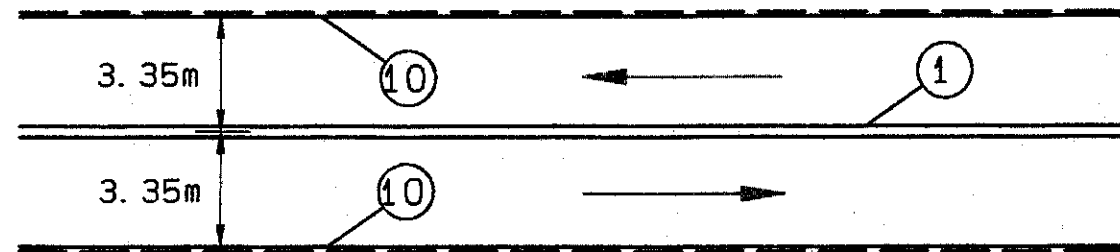
83  
121

PLAN NO.

## LEGEND

SEE SHEETS 93 & 94  
FOR PAVEMENT MARKING QUANTITIES

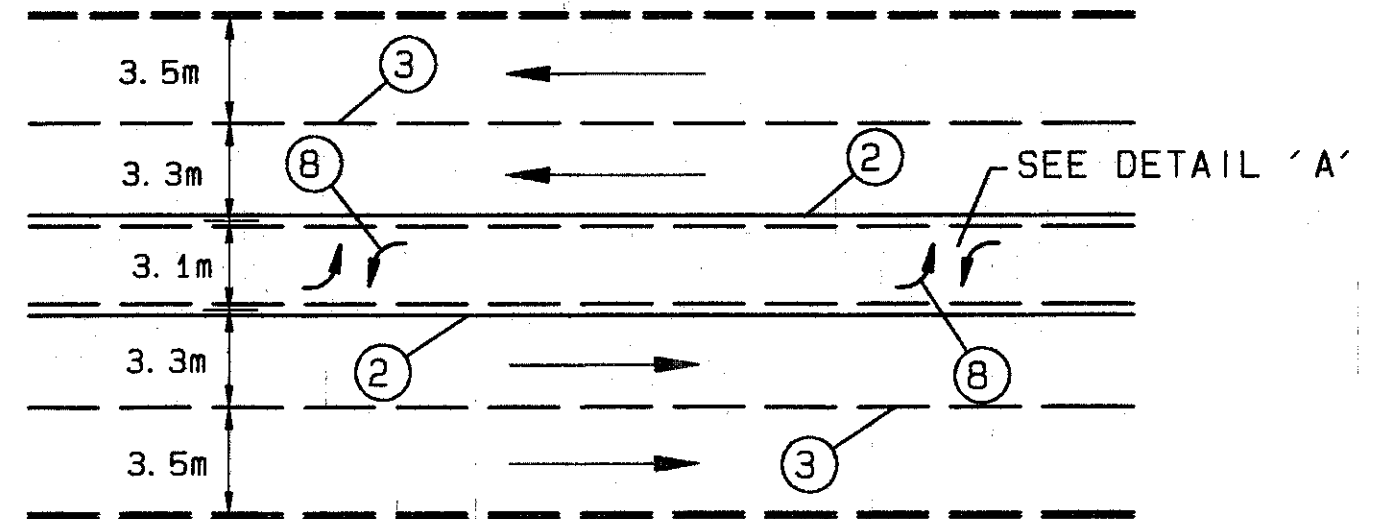
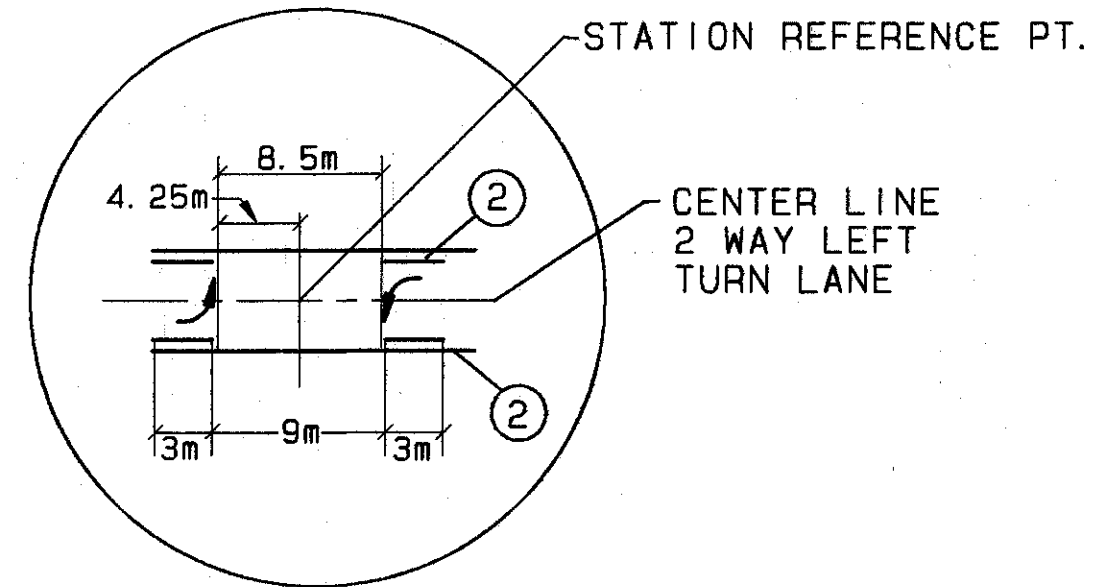
- ① ITEM 642 - CENTERLINE, TYPE 2 (DOUBLE SOLID YELLOW)
- ② ITEM 642 - CENTERLINE, TYPE 2 (SOLID/DASHED YELLOW)
- ③ ITEM 642 - LANE LINE, TYPE 2
- ④ ITEM 642 - STOP LINE, TYPE 2
- ⑤ ITEM 642 - CROSSWALK LINE, TYPE 2
- ⑥ ITEM 642 - CHANNELIZING LINE, TYPE 2
- ⑦ ITEM 642 - WORD "ONLY" ON PAVEMENT, TYPE 2
- ⑧ ITEM 642 - LANE ARROW, TYPE 2
- ⑨ ITEM 642 - TRANSVERSE LINES, TYPE 2
- ⑩ ITEM 642 - EDGE LINE, TYPE 2



NORMAL TWO LANE SECTION

ONE LANE EAST BOUND  
ONE LANE WEST BOUND  
STA. 2+307.830 TO STA. 3+625.881

DETAIL 'A'



NORMAL FIVE LANE SECTION

TWO LANES EAST BOUND  
TWO LANE WEST BOUND  
ONE TWO-WAY LEFT TURN  
STA. 0+000.000 TO STA. 2+307.830