

PAVEMENT REPAIR DETAILS

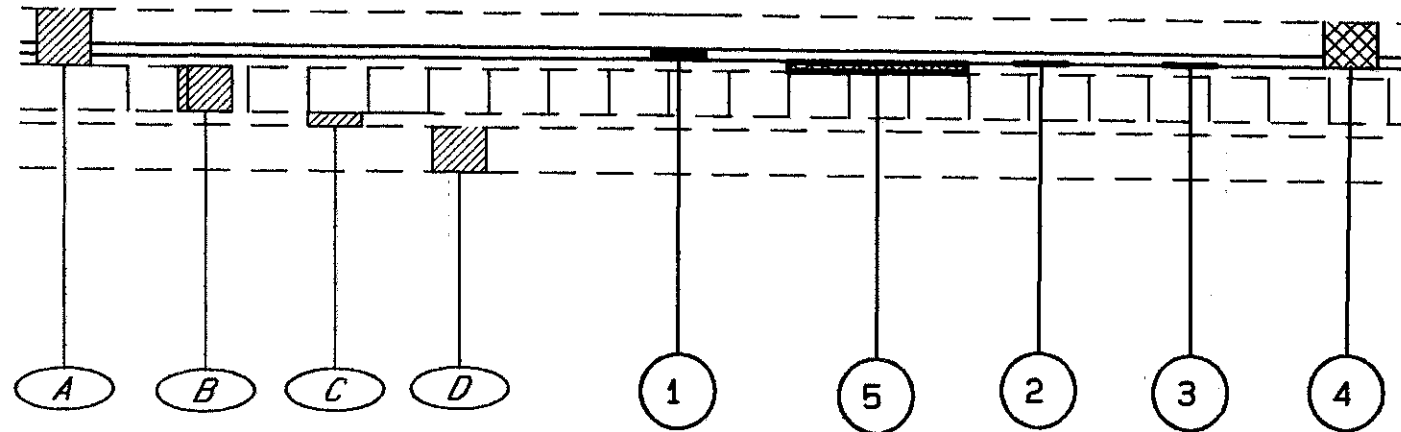
5-LANE SECTION STA. 0+000.000 TO STA. 2+326.843

LAKE COUNTY
LAK-283-0.000



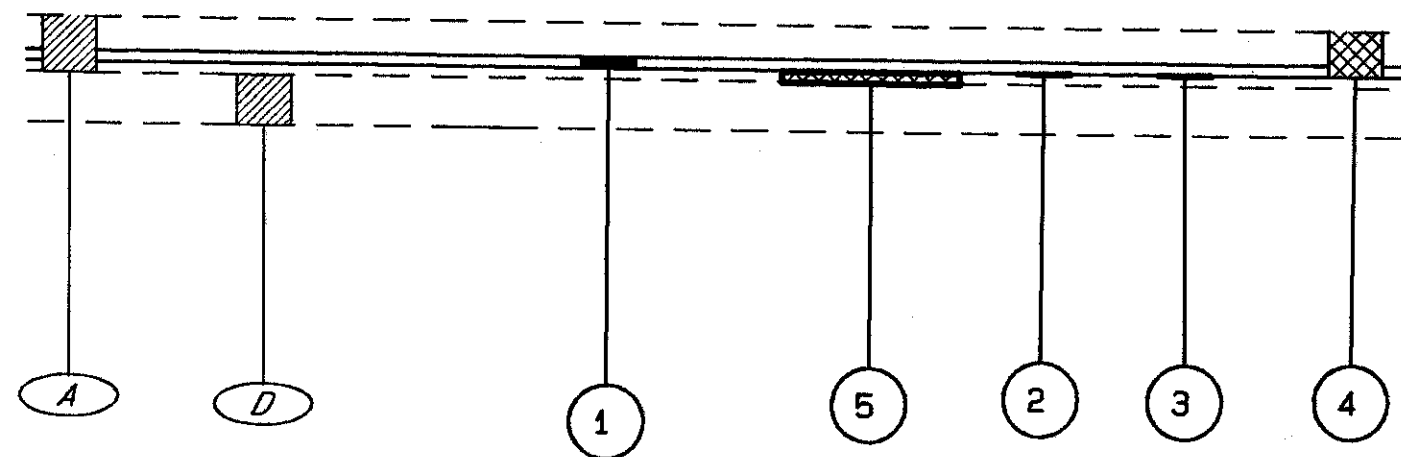
75
121

PLAN NO.



PARTIAL DEPTH PAVEMENT REPAIR
STA. 0+000.000 TO STA. 1+251.814, LEFT

- LEGEND**
- ① ITEM 448 - 32 mm ASPHALT CONCRETE SURFACE COURSE, TYPE 1, PG 64-22
 - ② ITEM 448 - 0mm (MIN.) ASPHALT CONCRETE INTERMEDIATE COURSE, TYPE 1, PG 64-22
 - ③ ITEM 407 - TACK COAT
 - ④ ITEM 254 - PAVEMENT PLANING, BITUMINOUS (102 mm THICKNESS)
 - ⑤ ITEM 251 - PARTIAL DEPTH PAVEMENT REPAIR



PARTIAL DEPTH PAVEMENT REPAIR
STA. 0+000.000 TO STA. 1+251.814
STA. 1+251.814 TO STA. 1+478.280
STA. 1+623.060 TO STA. 2+326.843

- LEGEND**
- (A) EXISTING ASPHALT CONCRETE
 - (B) EXISTING BRICK BASE
 - (C) EXISTING CUSHION COURSE
 - (D) EXISTING 166 mm± CONCRETE BASE

FOR PARTIAL DEPTH PAVEMENT REPAIR QUANTITIES
SEE GENERAL NOTES SHEETS 10 AND 14.

93300 FRI 08/08/97 01:12 PM MATT FILES: D101.PLT

DETAILS - LAYER 101