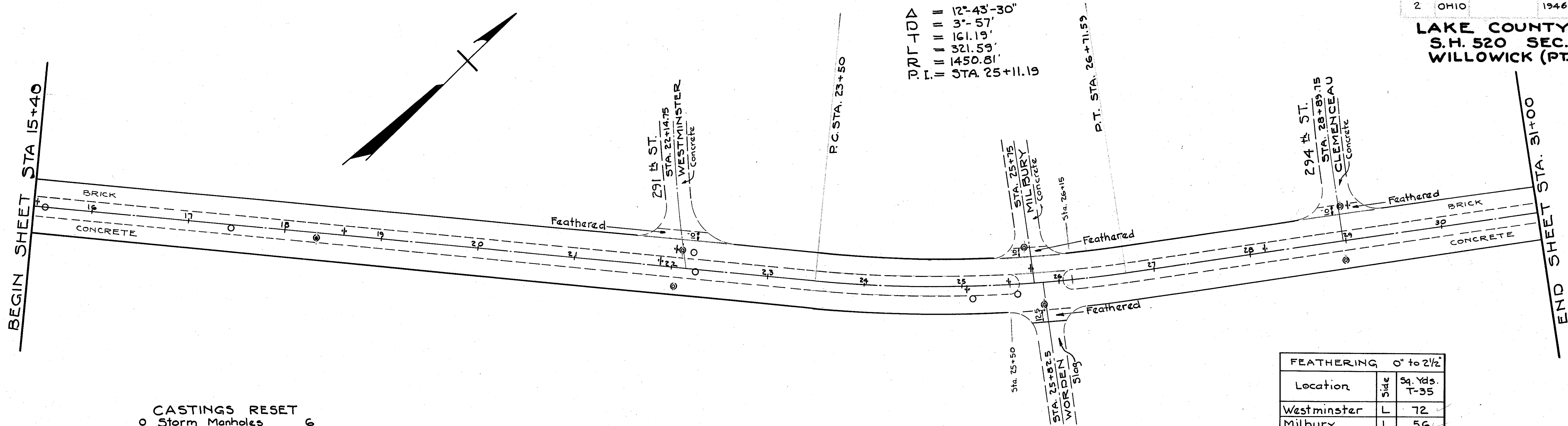


LAKE COUNTY
S.H. 520 SEC.
WILLOWICK (PT.)

BEGIN SHEET STA 15+40

END SHEET STA. 31+00

P.T. = 12°-43'-30"
 = 3°-57'
 = 161.13'
 = 321.59'
 = 1450.81'
 = STA. 25+11.19



CASTINGS RESET
 ○ Storm Manholes 6
 ⊙ Sanitary Manholes 7
 † Water Valve Box 9

FEATHERING 0' to 2 1/2'		
Location	Side	Sq. Yds. T-35
Westminster	L	72
Milbury	L	56
Worden	R	62
Clemenceau	L	60
Total		250

LAKE SHORE BLVD. S.H. 520

SQ. YDS. IN CENTER STRIP								
Station		Length	Width	Sq. Ft.	Sq. Ft. in Ends	Total Sq. Ft.	Sq. Yds.	Sealing Edge E-B Lin. Ft.
From	To							
15+40	25+50	1010	18.5	18685.0	134.40	18819.40		2049.10
26+15	31+00	485	18.5	8972.5	134.40	9106.90		999.10
						27926.30	3102.92	3048.20

Grade Line Shown is Top of Inside Edge of Existing Pavement.

