

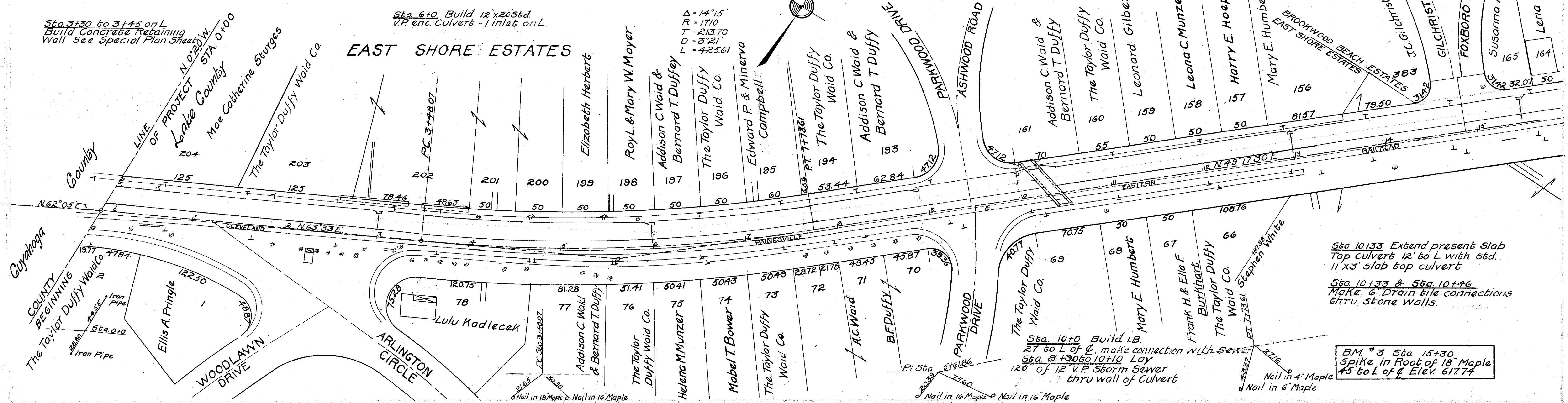
Sta 3+0 Build 12"x20 Std. V.P. etc. Culvert - 1 inlet on L.

BM #1 Sta 2+55  
X on N.W. Cor. W. end of Retaining Wall Elev 6487

BM #2 Sta 5+53  
Spike in Root of 10" Maple 32.60 R of C Elev. 615.09

Sta 8+90 Build I.B. 27' to L. of C. make connection with sewer.

Sta 13+0 Build 12"x20 Std. V.P. etc. Culvert 1 inlet on L. Sta 15+50 Build 12"x20 Std. V.P. etc. Culvert 1 inlet on L.



Sta 10+33 Extend present Slab Top culvert 12' 60 L with 56d. 11' x 3' slab top culvert  
Sta 10+33 & Sta 10+46 Make 6" Drain tile connections thru stone walls.

Sta 10+0 Build I.B. 27' 60 L of C. make connection with sewer  
Sta 8+90 60' 10+10 Lay 12" of 12" V.P. Storm Sewer thru wall of Culvert

BM #3 Sta 15+30  
Spike in Root of 18" Maple 45' 60 L of C Elev. 617.74

