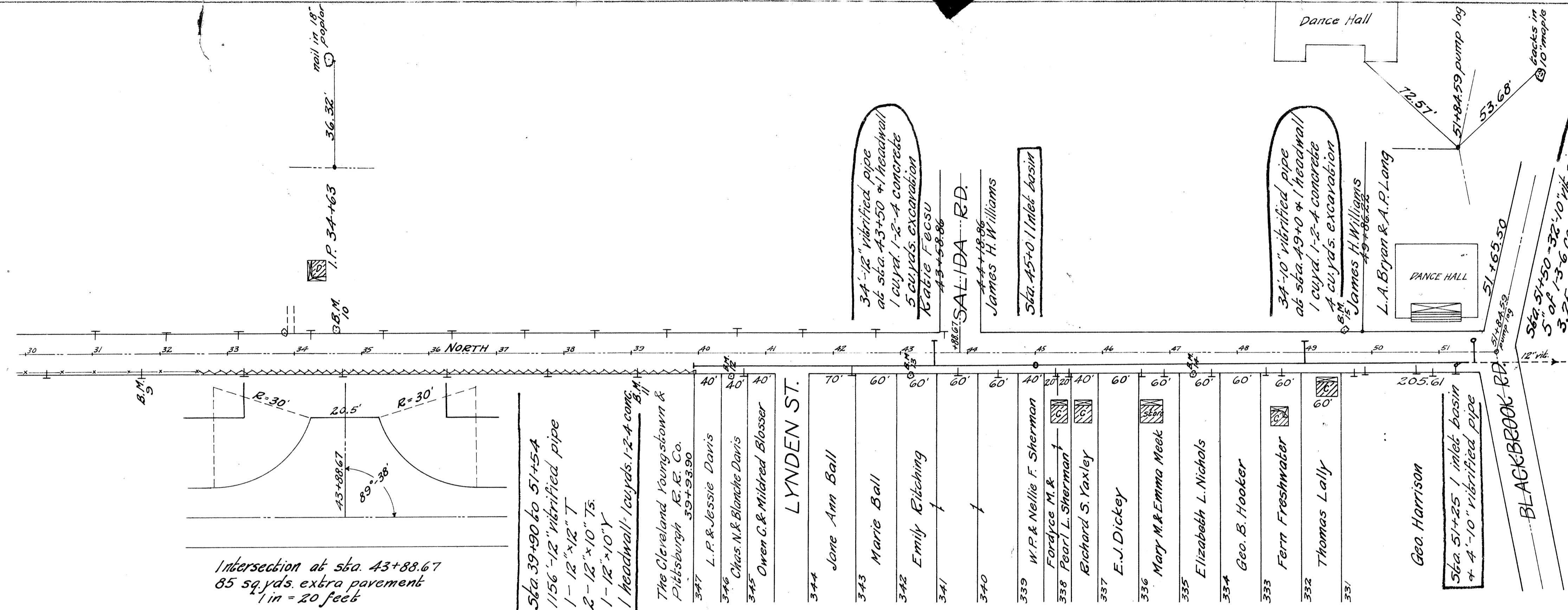


PLAN
SURVEYED
PLOTTED
NOTE BOOK
ALIGNMENT CHECKED
NO. OF WAYS CHECKED
NO.



- B.M. #9 sta. 31+74 spike in bel. pole 23' R ± Elev. = 606.24
- B.M. #10 sta. 34+63 spike in root 18" poplar 32.5' L ± Elev. = 606.55
- B.M. #11 sta. 39+10 spike in bel. pole 19' R ± Elev. = 603.42
- B.M. #12 sta. 40+47 spike in 18" poplar 32' R ± Elev. = 603.04
- B.M. #13 sta. 43+15 spike in 18" poplar 32' R ± Elev. = 603.17
- B.M. #14 sta. 47+33 spike in 15" poplar 32' R ± Elev. = 602.48
- B.M. #15 sta. 49+57 spike in 48" oak 32' L ± Elev. = 597.84

PROFILE
SURVEYED
PLOTTED
NOTE BOOK
GRADES CHECKED
NO.
STRUCTURE NOTATIONS CH. 12

