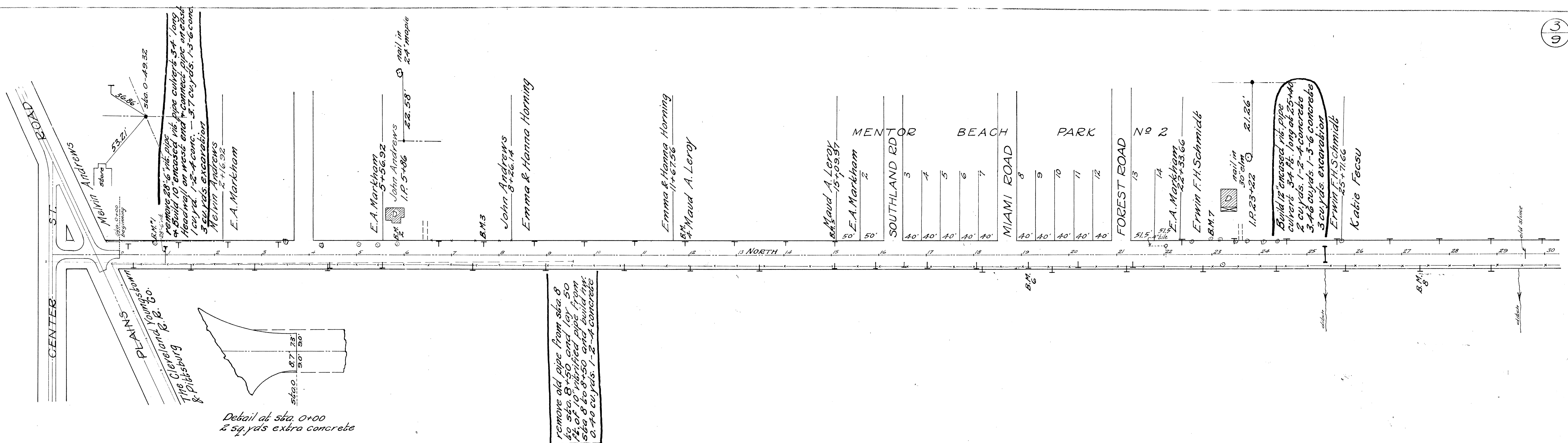


PLAN
 PARTS
 CHECKED
 DATE
 NOTE BOOK
 NO. OF SHEETS
 NO. OF SHEETS USED



B.M. #1 sta. 0+74
 spike in root of 36" maple
 2" L #
 Elev. = 625.48

B.M. #2 sta. 5+86
 spike in root of 30" maple
 2.25" L #
 Elev. = 626.72

B.M. #3 sta. 7+68
 spike in bel. pole
 1.85" L #
 Elev. = 624.27

B.M. #4 sta. 11+92
 spike in bel. pole
 1.7" L #
 Elev. = 620.22

B.M. #5 sta. 15+08
 spike in bel. pole
 1.5" R #
 Elev. = 613.51

B.M. #6 sta. 19+14
 spike in bel. pole
 1.5" R #
 Elev. = 607.69

B.M. #7 sta. 22+98
 spike in 18" hemlock
 3.3" L #
 Elev. = 607.95

B.M. #8 sta. 27+38
 spike in bel. pole
 1.5" R #
 Elev. = 607.09

PROFILE
 PARTS
 CHECKED
 DATE
 NOTE BOOK
 NO. OF SHEETS
 NO. OF SHEETS USED

