

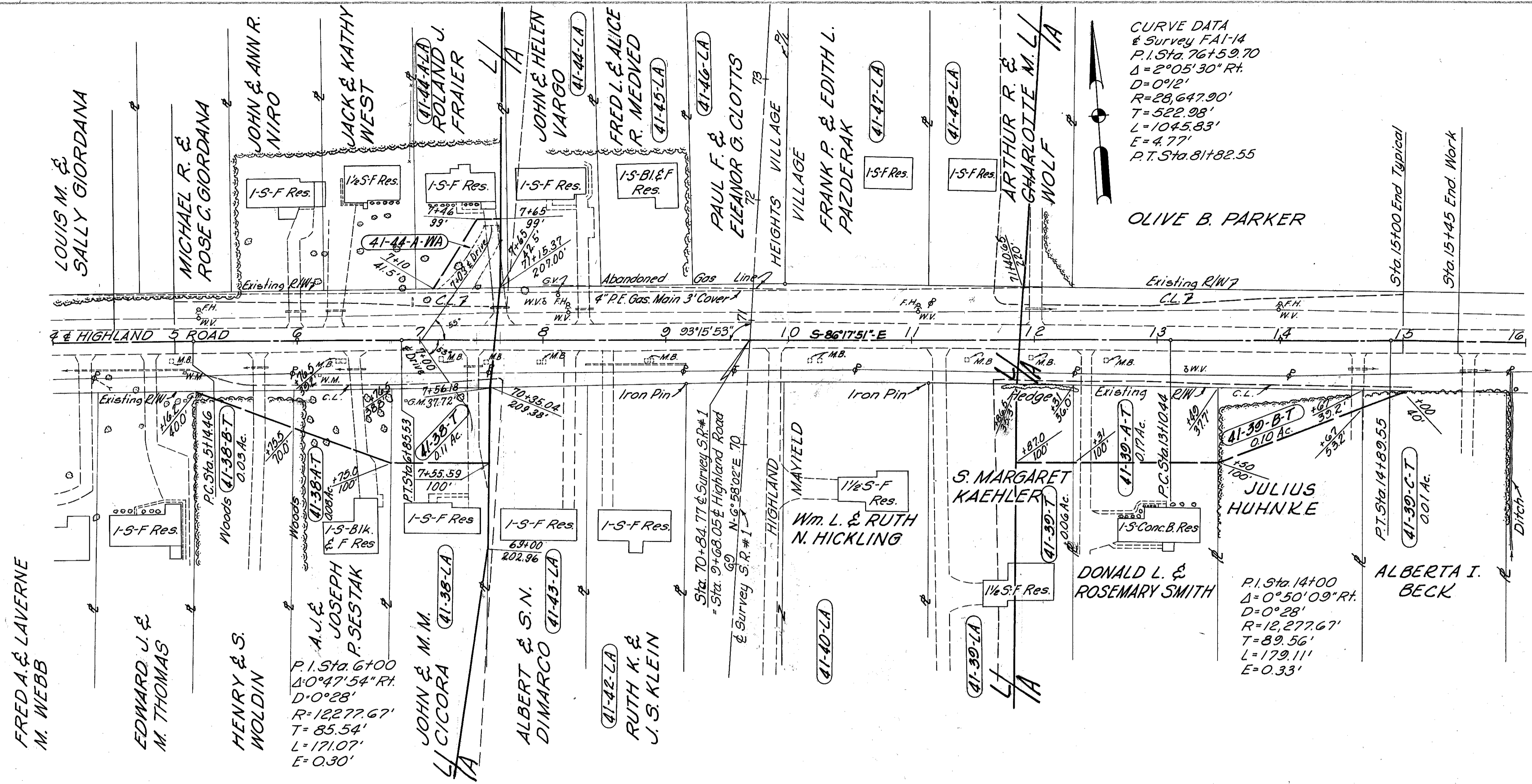
CUYAHOGA & LAKE COUNTIES  
 CUY-1-15.91  
 LAK-1-0.00  
 LIMITED ACCESS

R/W  
 22 of 29

CURVE DATA  
 & Survey FAI-14  
 P.I. Sta. 761+59.70  
 $\Delta = 2^{\circ}05'30''$  Rt.  
 $D = 0^{\circ}12'$   
 $R = 28,647.90'$   
 $T = 522.98'$   
 $L = 1045.83'$   
 $E = 4.77'$   
 P.T. Sta. 81+82.55

OLIVE B. PARKER

Sta. 15+00 End Typical  
 Sta. 15+45 End Work



P.I. Sta. 14+00  
 $\Delta = 0^{\circ}50'09''$  Rt.  
 $D = 0^{\circ}28'$   
 $R = 12,277.67'$   
 $T = 89.56'$   
 $L = 179.11'$   
 $E = 0.33'$

NO STRUCTURES  
 TO BE REMOVED.

Scale: 1" = 50'

MICHAEL BAKER, JR., CONSULTING ENGINEERS ROCHESTER, PENNSYLVANIA					
STATE OF OHIO DEPARTMENT OF HIGHWAYS RIGHT OF WAY PLANS STATE HIGHWAY NO. 1 C-41 HIGHLAND ROAD					
DATE: 7-29-59 Revised: 10-18-59	Designed	Drawn	Traced	Checked	Reviewed Date
	J.P.	AL.H.	K.A.	B.P.	