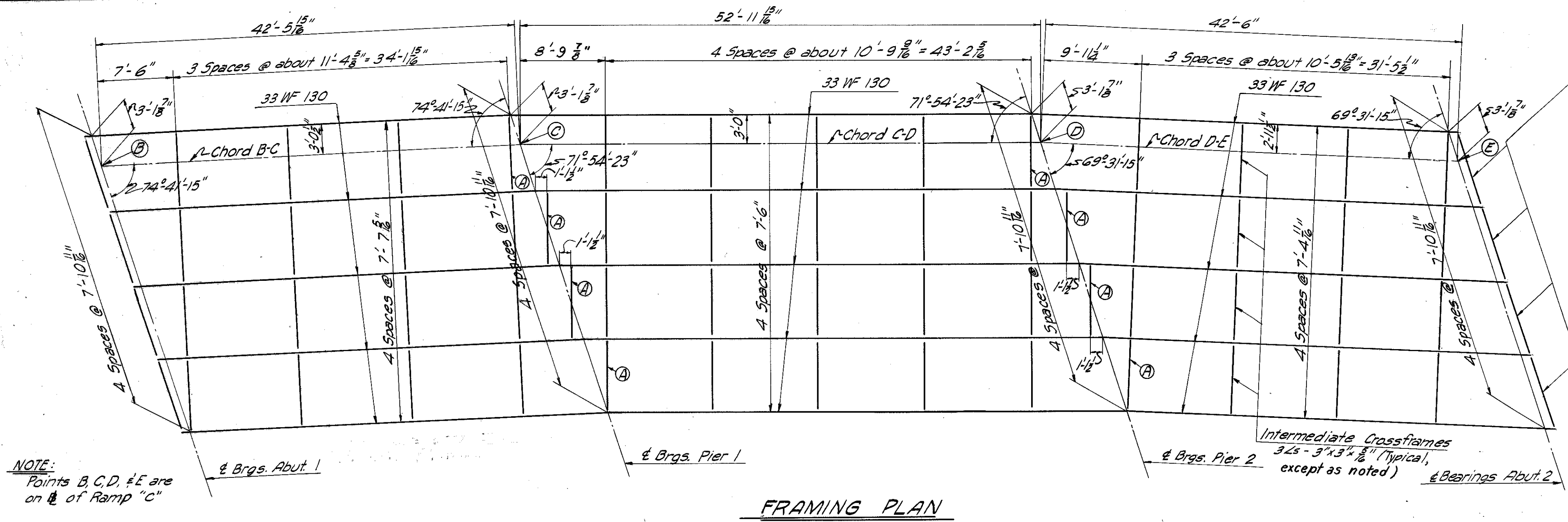
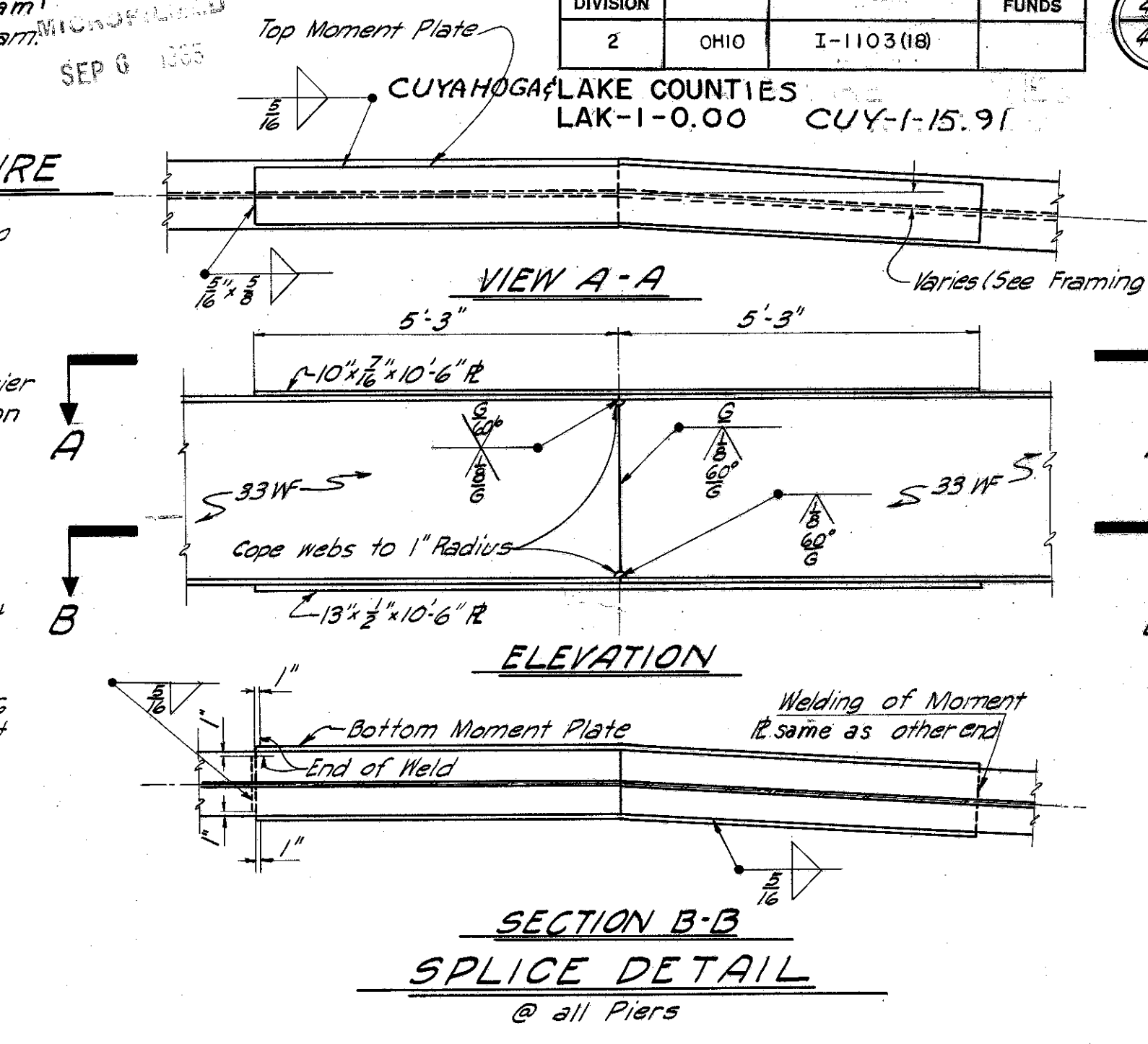
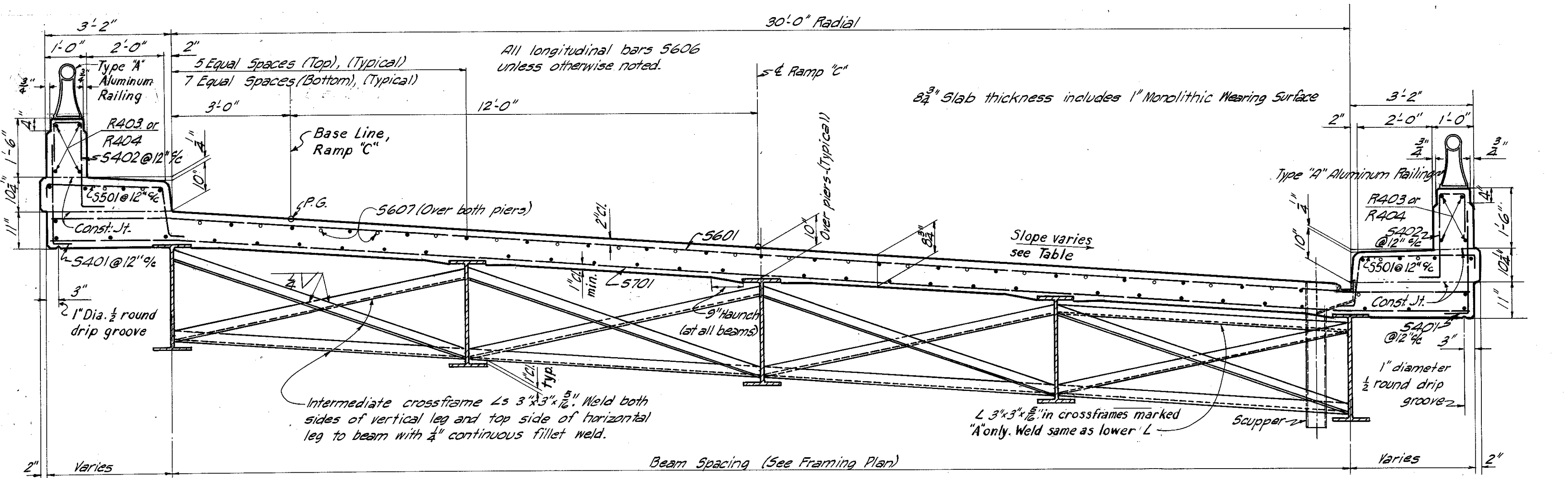


End crossframe, 2 1/2" x 4" x 1/2". See Std. Dwg. CSB-2-56, dated 12-3-56, rev. 22-59, 3h 2 of 6, Sect. B-B (for beam) spacing 8'-0" or less measured parallel to end dam.

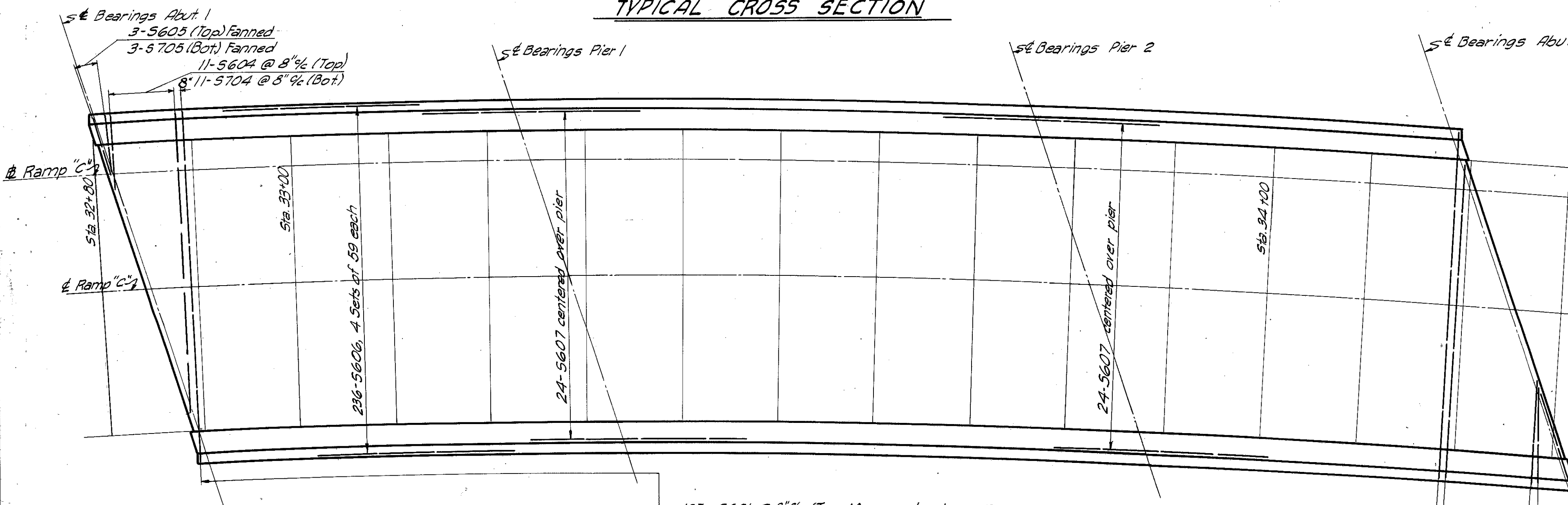
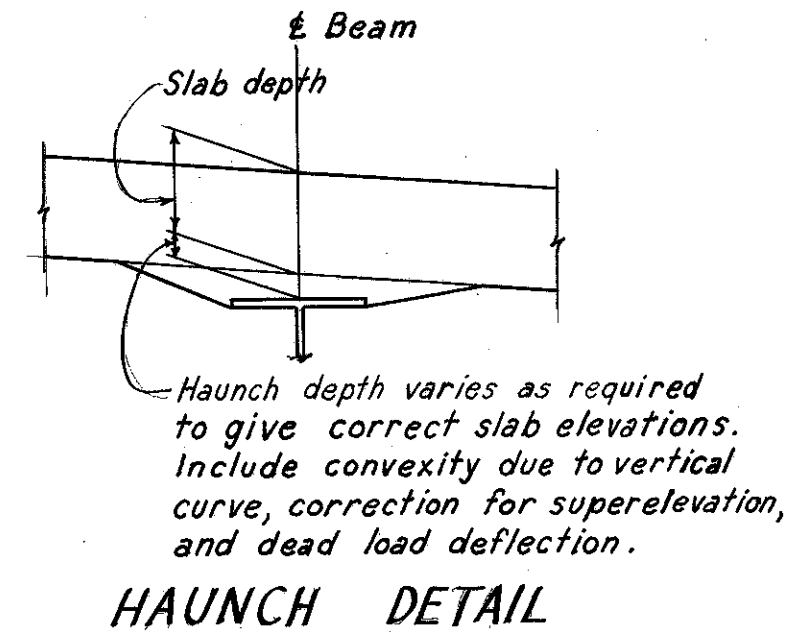


NOTE: Points B, C, D, E are on E of Ramp "C"



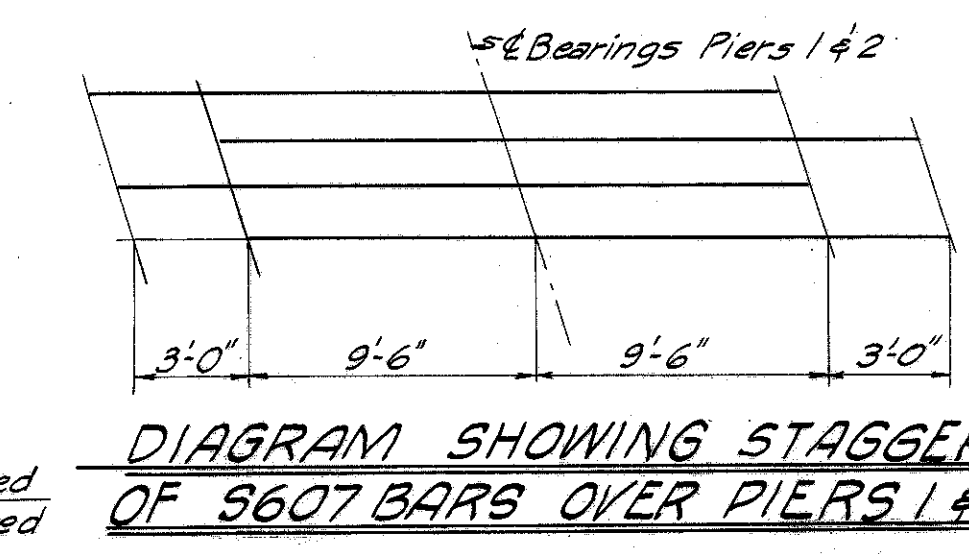
**TABLE OF SLAB ELEVATIONS**

STATION	BUTTER	PROFILE	BARY	BUTTER
32+80	867.00	866.77	864.73	
85	866.91	866.69	864.68	
90	866.83	866.61	864.62	
95	866.74	866.52	864.57	
33+00	866.65	866.44	864.51	
05	866.56	866.35	864.45	
10	866.46	866.26	864.39	
15	866.37	866.16	864.32	
20	866.27	866.07	864.26	
25	866.17	865.97	864.19	
30	866.07	865.87	864.11	
35	865.96	865.77	864.02	
40	865.86	865.67	863.97	
45	865.75	865.56	863.89	
50	865.64	865.46	863.81	
55	865.53	865.35	863.73	
60	865.41	865.24	863.65	
65	865.30	865.12	863.56	
70	865.18	865.01	863.47	
75	865.06	864.89	863.38	
80	864.94	864.77	863.29	
85	864.81	864.65	863.20	
90	864.68	864.53	863.10	
95	864.56	864.40	863.00	
34+00	864.42	864.27	862.91	
05	864.29	864.14	862.80	
10	864.16	864.01	862.70	
15	864.02	863.88	862.59	
20	863.88	863.74	862.49	
25	863.74	863.60	862.37	
30	863.60	863.46	862.26	
35	863.45	863.32	862.15	
34+40	863.30	863.18	862.04	



**DECK PLACING PROCEDURE**

In placing the deck concrete, construction joints will be permitted, parallel to the transverse reinforcing steel and near the middle of any span. Because of the flow of curing water from the surface of previously placed deck concrete, the sequence of pours shall be upgrade, starting at the lowest end (or ends) on an inclined grade or vertical curve (or at an intermediate low point for a sagged vertical curve.)



**DEAD LOAD DEFLECTION**

POINT	INTERIOR BEAM	EXTERIOR BEAM
1	1/8"	1/8"
2	1/8"	1/8"
3	1/16"	1/16"
5	1/8"	1/8"
6	1/16"	1/16"

**PAINTING:** After erection and after the shop coat has been cleaned and, where necessary, repainted in accordance with Sec. 5-3.04, an additional coat of the same paint as used in the shop shall be applied over the outside face of the outside steel beams and all sides of bottom flange.

**NOTES:**

- All concrete shall be Class "C".
- Concrete and reinforcing steel above parapet construction joint included with railing for payment.
- Refer to Standard Drawing CSB-2-56, Sheets 1, 2, & 3 of 6 for details of Bearing Devices, Scuppers, Gutter, Curb Plates, and End Dam.

MICHAEL BAKER JR., CONSULTING ENGINEERS  
ROCHESTER, PENNSYLVANIA

**SUPERSTRUCTURE**

**RAMP "C" OVER EDDY ROAD**

LAKE COUNTY STA. 32+79.49  
STA. 34+22.23

Designed	Drawn	Traced	Checked	Reviewed-Date	Revised
WRB	W.H.T.	M.S.	H.C.M.	H.G.H./12-30-58	