

NOTE:
 Special care shall be taken in placing reinforcing steel in the pier cap so that it will not interfere with the anchor bars.

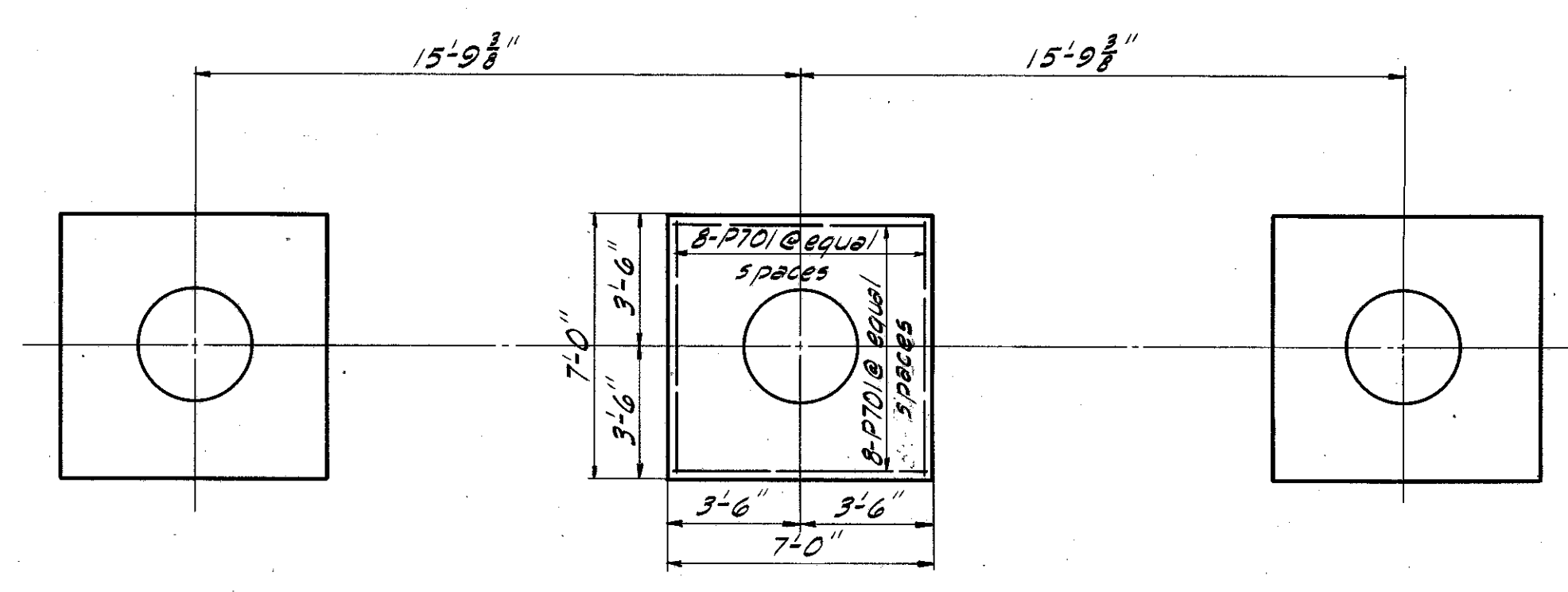


TABLE OF ELEVATIONS

LOCATION	A	B	C	D	E	F	G	H
PIER 1	862.98	861.83	861.29	860.76	860.23	859.13	856.98	850.25
PIER 2	861.28	860.80	860.33	859.88	859.42	858.03	856.17	854.25

Note: Dimensions and reinforcing steel shown for footing are typical for all footings.

MICHAEL BAKER JR., CONSULTING ENGINEERS
 ROCHESTER, PENNSYLVANIA

PIERS

RAMP "C" OVER EDDY ROAD

LAKE COUNTY

STA. 32+79.49
 STA. 34+22.23

Designed	Drawn	Traced	Checked	Reviewed-Date	Revised
J.V.W.	J	A.C.M.	H.C.M.	H.G.H.-12-30-58	