

MICROFILMED  
SEP 6 1965

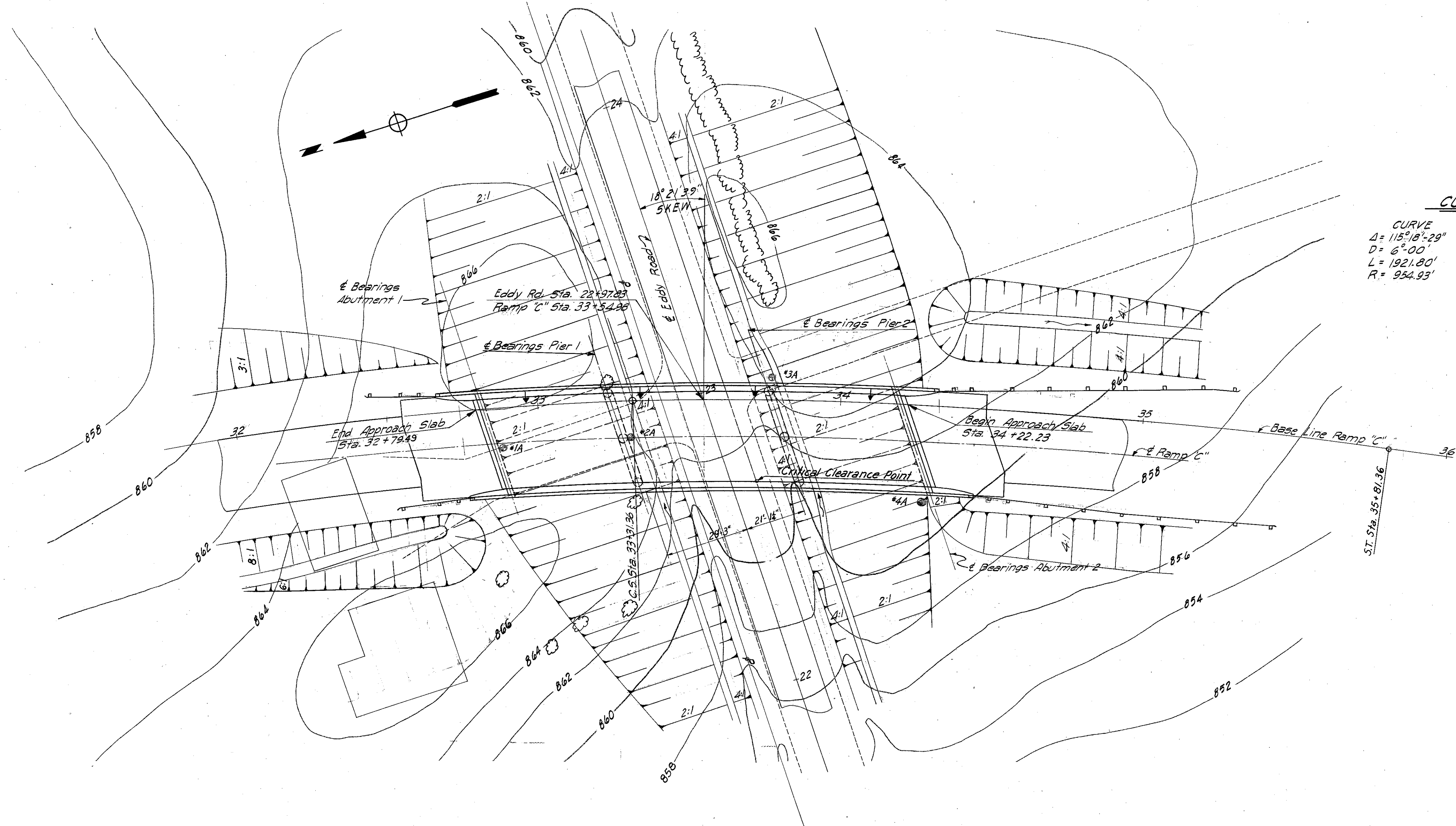
FED. RD. DIVISION	STATE	PROJECT	TYPE FUNDS
2	OHIO	I-1103 (18)	

422  
158

CUYAHOGA 4  
3.85 MI± NORTH OF MAYFIELD HEIGHTS  
LAKE COUNTIES  
LAK-1-0.00  
CUY-1-15.90

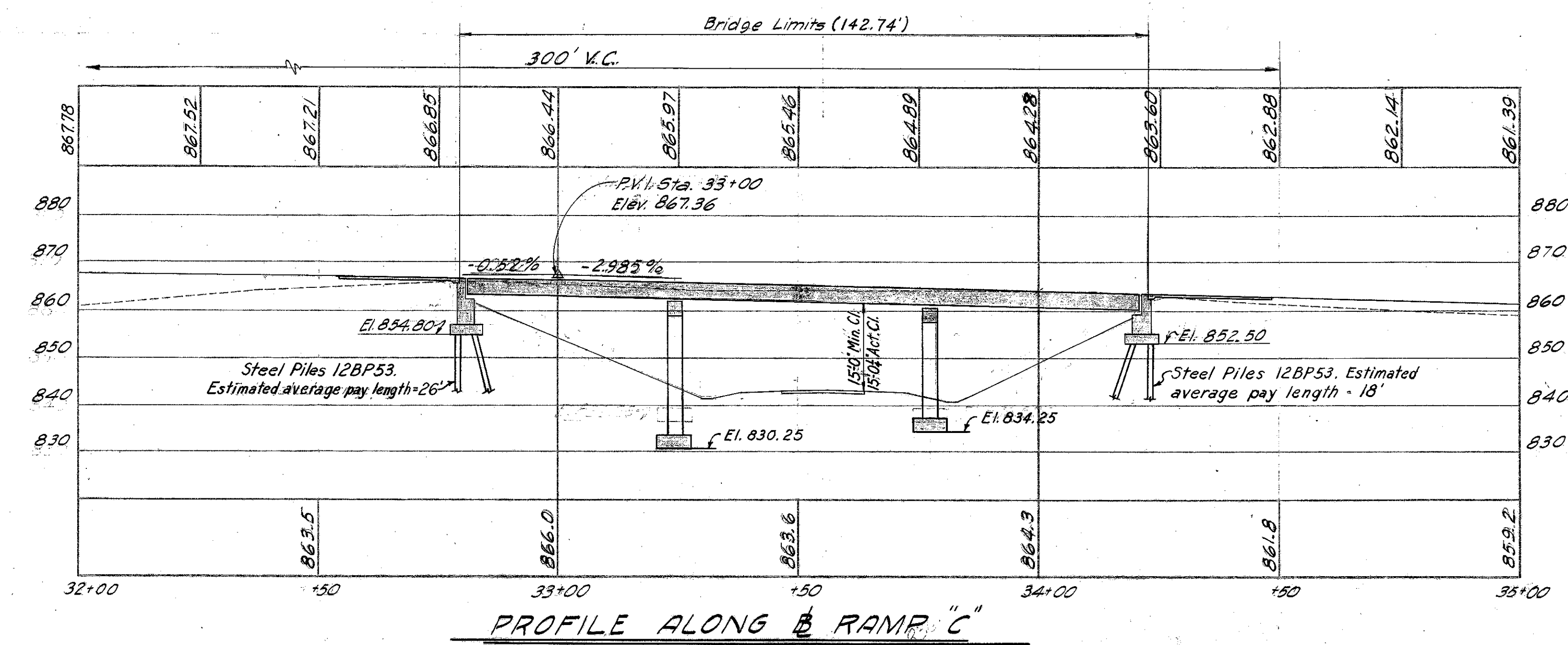
**CURVE DATA**

CURVE	SPIRAL
$\Delta = 115^{\circ} 18' 29''$	P.I. Sta. 34+14.83
$D = 6^{\circ} 00'$	$L_s = 250'$
$L = 1921.80'$	$G_s = 7^{\circ} 30'$
$R = 954.93'$	$P = 2.73'$
	$K = 124.93'$
	$L.T. = 166.82'$
	$S.T. = 83.47'$



FOUNDATION SOUNDINGS: Foundation design and foundation quantities are based on a study of borings and soil sampling soundings made at the site. This sounding information may be inspected in the office of the Bureau of Bridges in Columbus or in the Division Office but the State does not guarantee the accuracy thereof.

- Indicates Boring Location
- ↑ Indicates Delineators



**PROPOSED STRUCTURE**  
 TYPE: Continuous steel beam with reinforced concrete deck and substructure  
 SPAN: 42.50'-53.00'-42.50'  
 ROADWAY: 30'-0" ± 2'-2" Safety Curbs  
 LOAD-FREQUENCY: C.F. = 2000 (57)  
 Adequate for AASHTO alternate loading.  
 SKEW: 18° 21' 39" R.E.  
 WEARING SURFACE: 1" Monolithic concrete  
 APPROACH SLABS: Special Design (25' long)  
 ALIGNMENT: 6° 00' Curve and Spiral  
 SUPERELEVATION: Varies

MICHAEL BAKER JR., CONSULTING ENGINEERS  
 ROCHESTER, PENNSYLVANIA

**SITE PLAN**  
 RAMP "C" OVER EDDY ROAD  
 LAKE COUNTY STA. 32+79.49  
 SCALE 1" = 20' STA. 34+22.23

PRESENT TOPOGRAPHY	PROPOSED WORK
Surveyed M.B.J.	Designed W.R.B.
Drawn A.C.M.	Checked A.C.M.
	Reviewed H.C.M.
	12-30-58