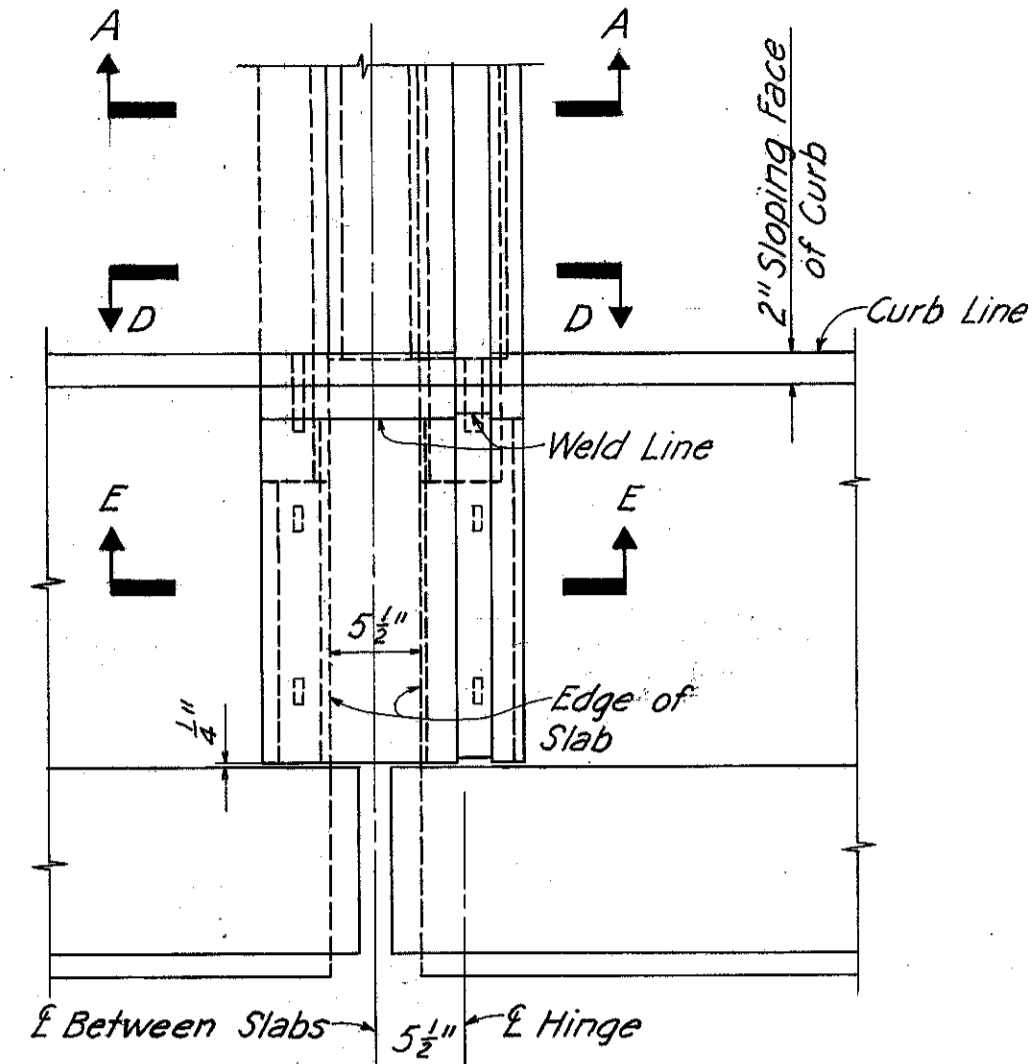
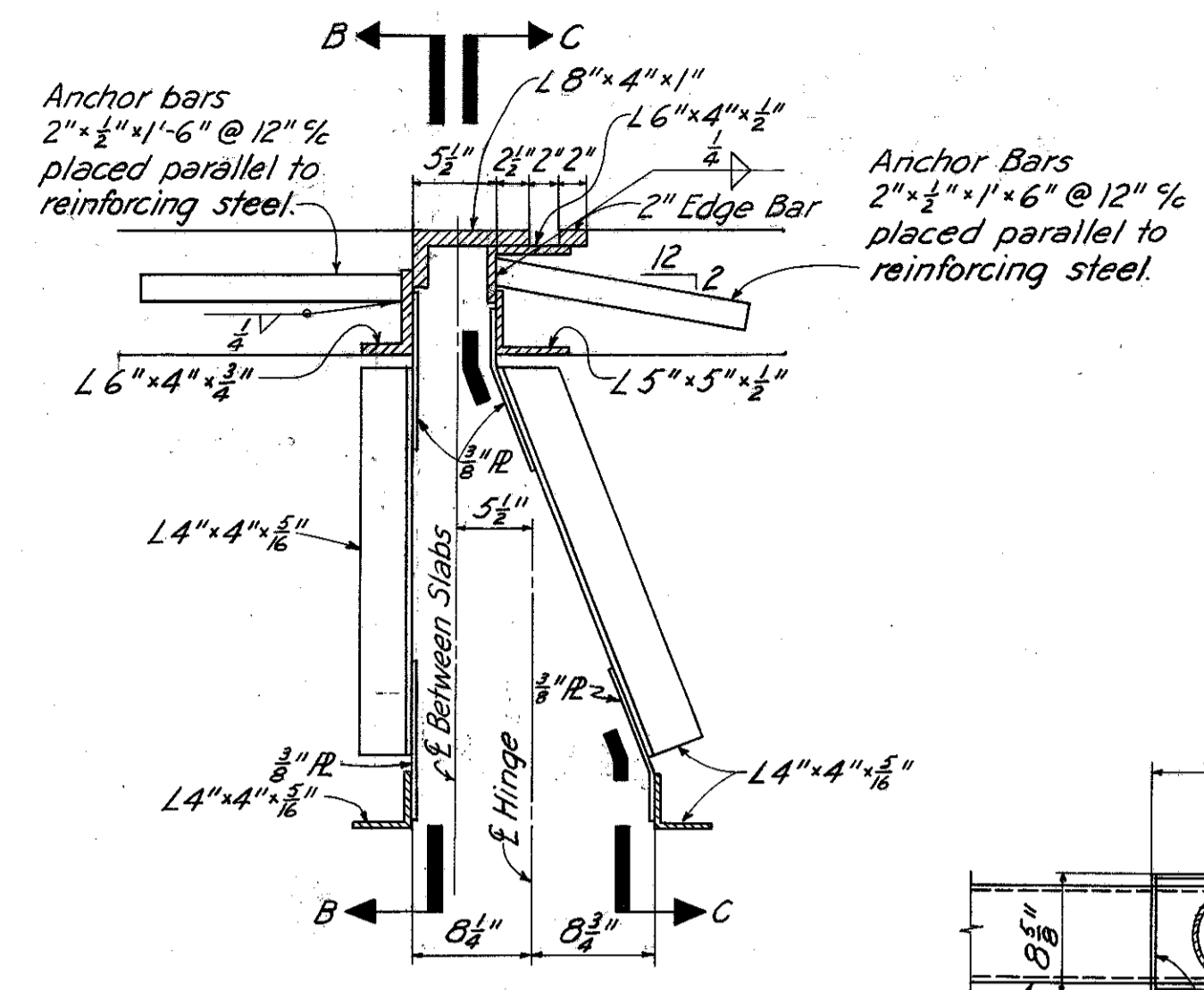


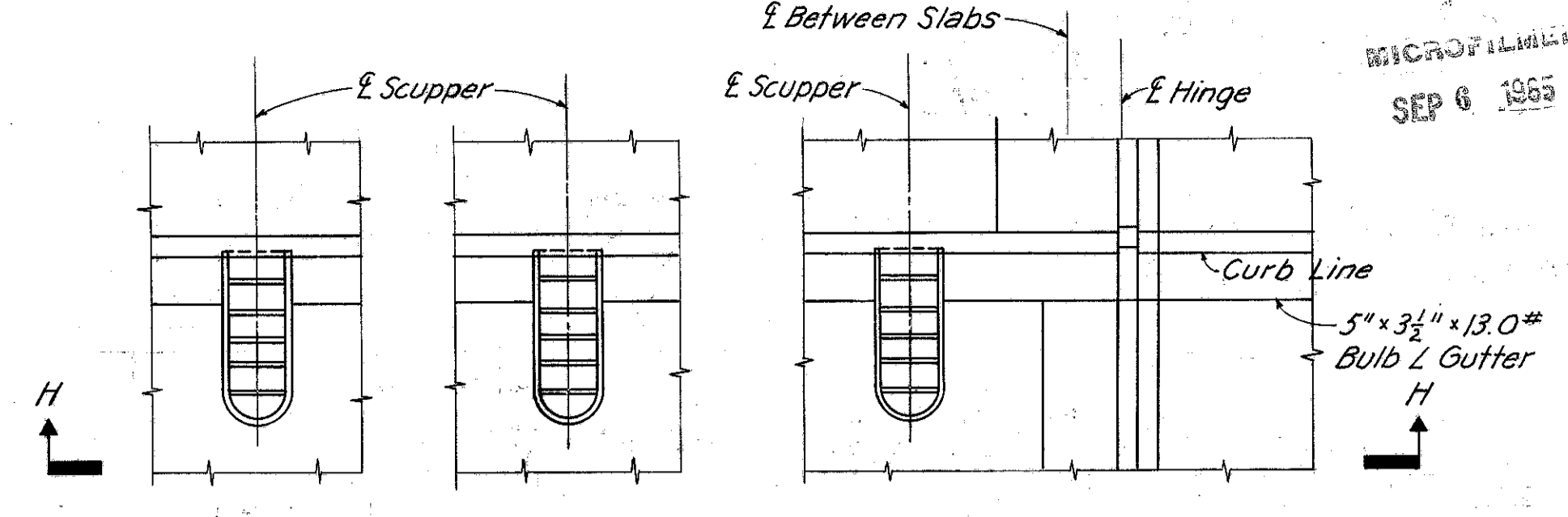
MICROFILMED
SEP 6 1965



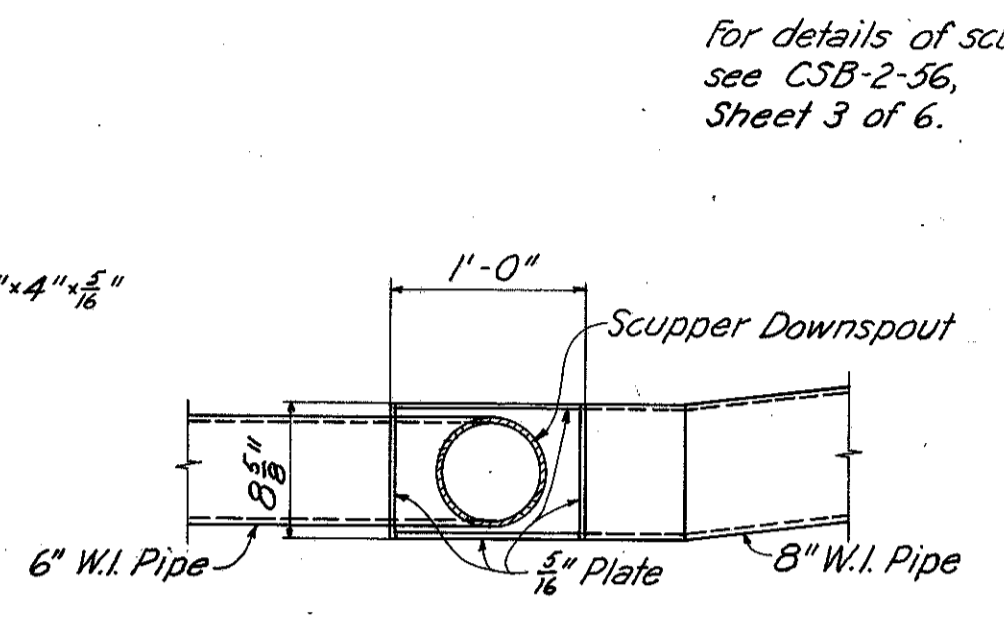
PART PLAN AT HINGE



SECTION A-A

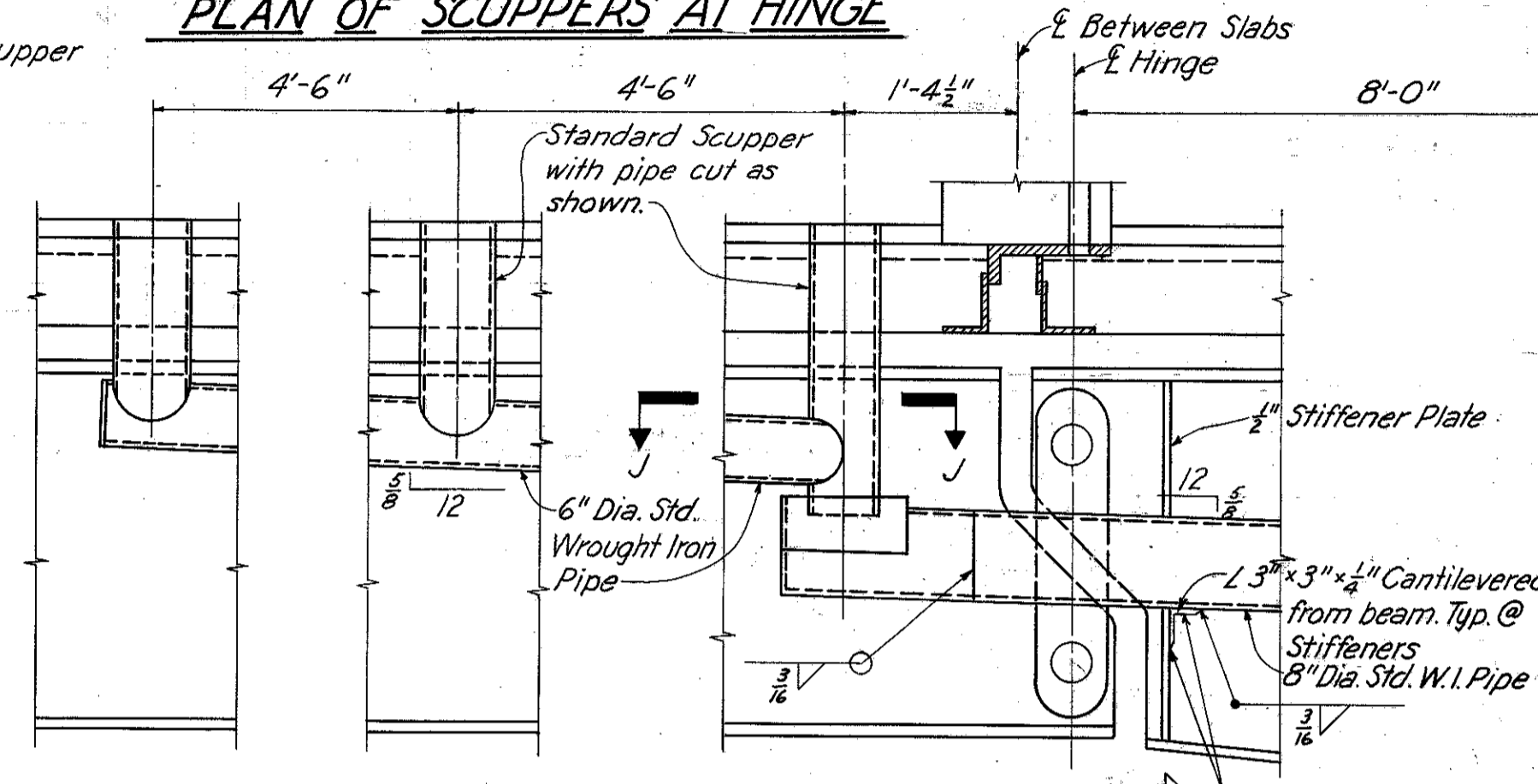


PLAN OF SCUPPERS AT HINGE

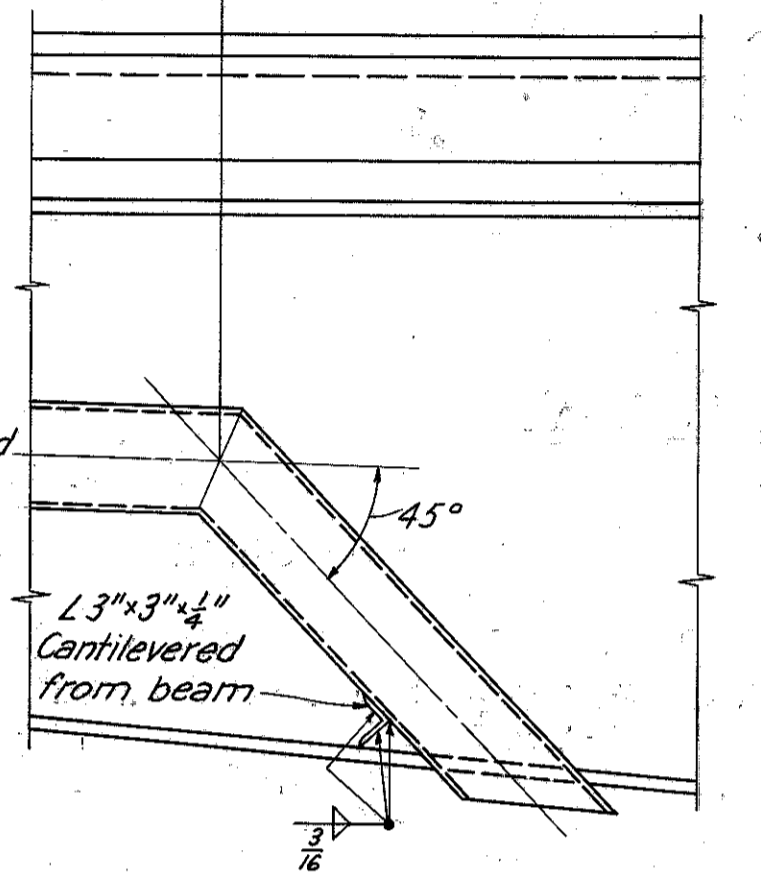


SECTION J-J

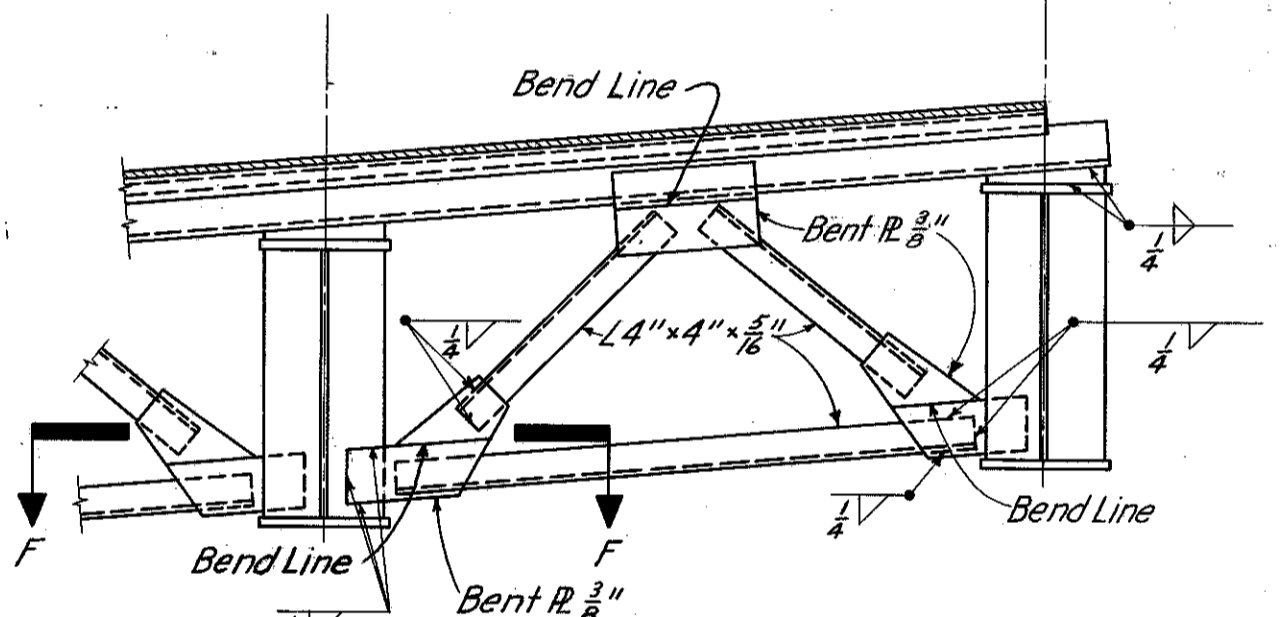
For details of scupper see CSB-2-56, Sheet 3 of 6.



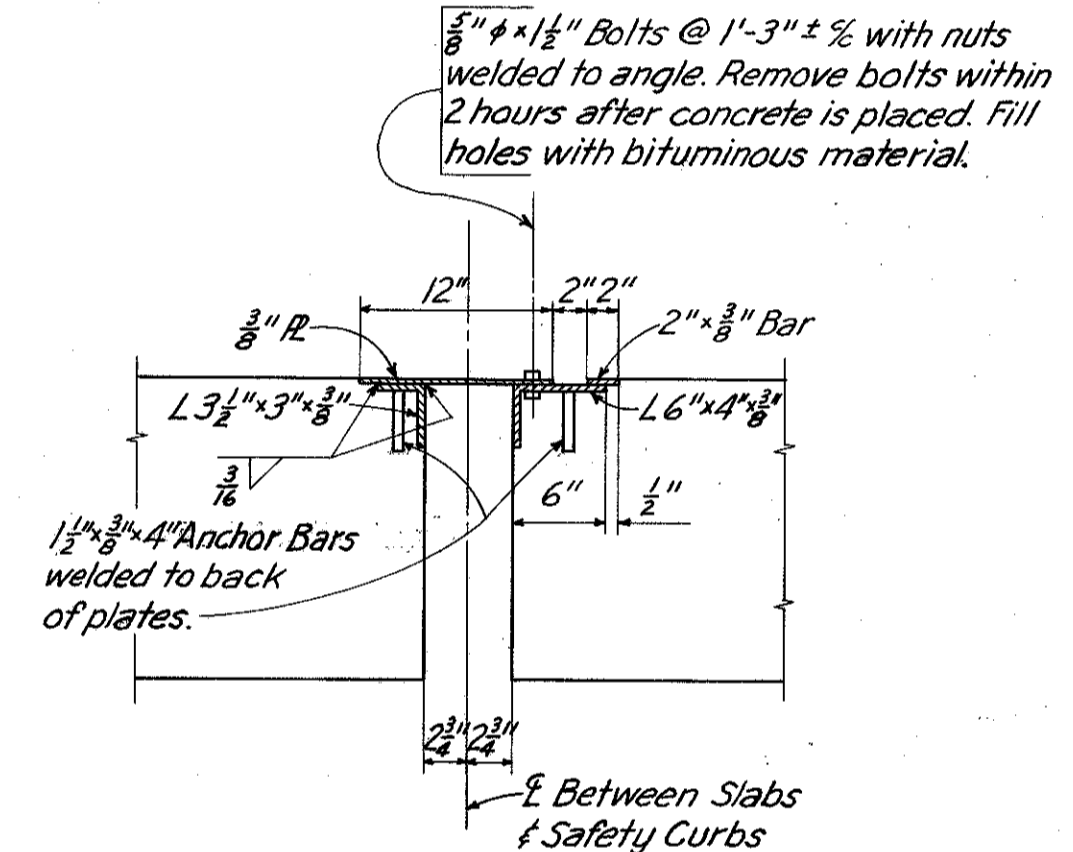
SECTION H-H



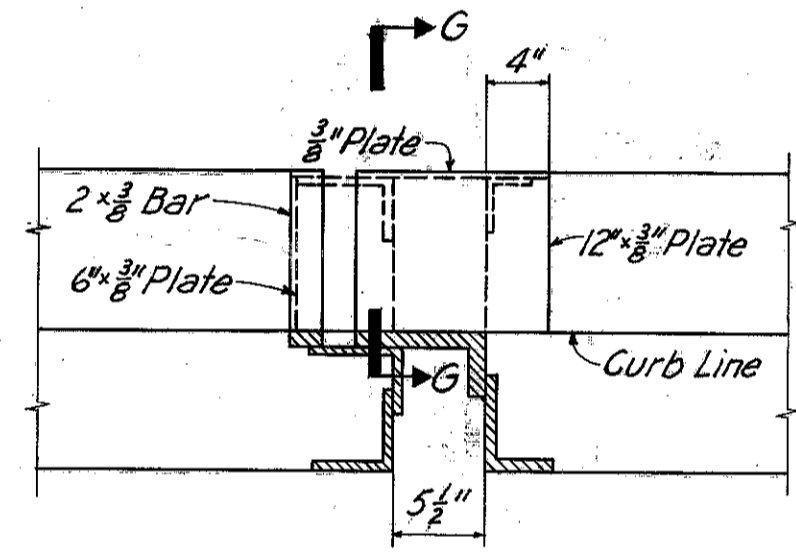
HAUNCH DETAIL



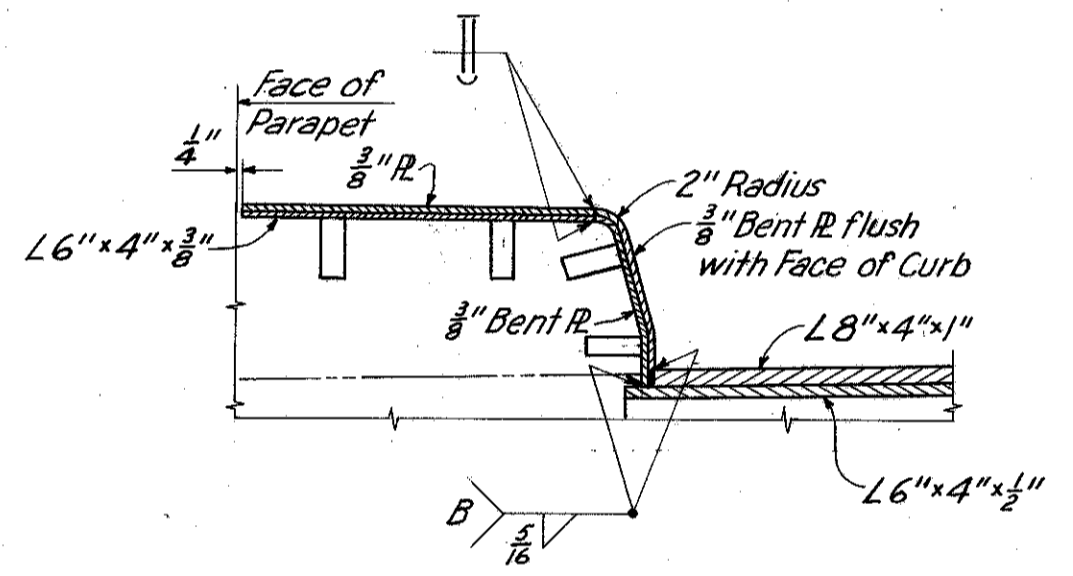
SECTION C-C



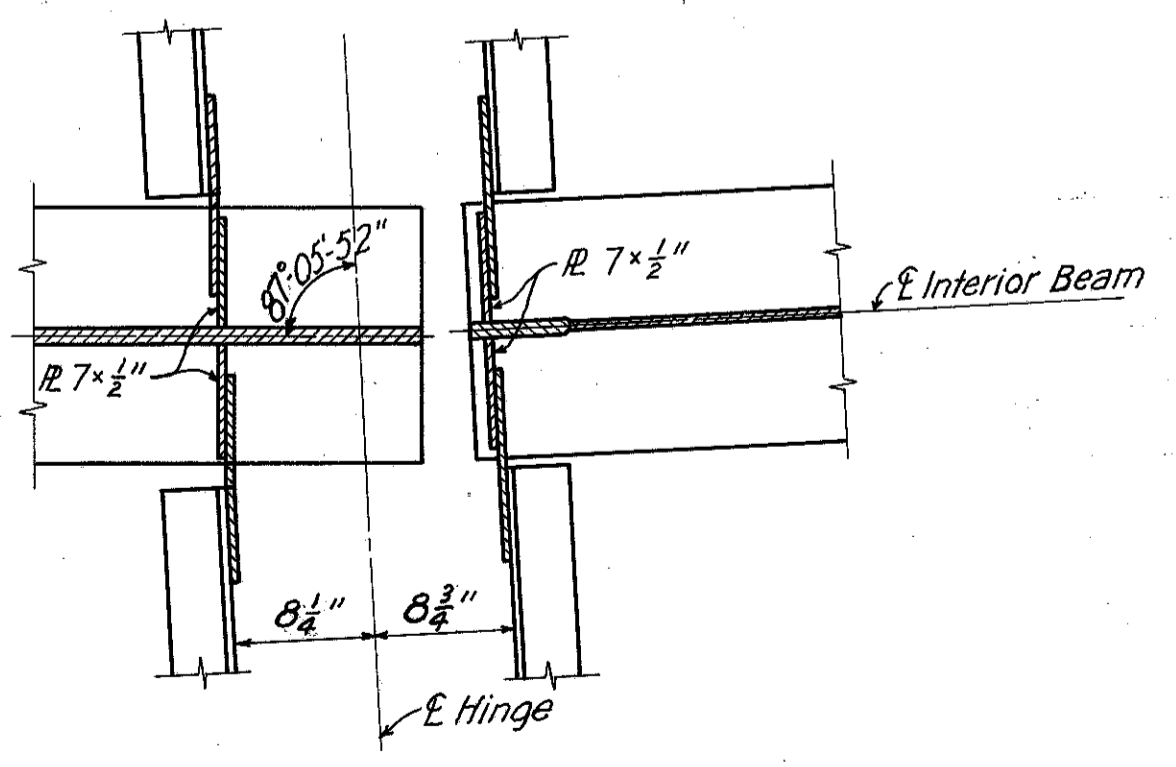
SECTION E-E



SECTION D-D



SECTION G-G



SECTION F-F

| | a | b | c | d | e | f | g | h | i | j | k | l | m | n | o | p | q | r | s | t | u | v | w | x |
|-----------------------------------|------|-----|------|------|------|------|-------|-------|-----|-----|------|------|------|------|------|-------|-------|------|------|------|-----|-------|------|------|
| Span 1-4 eq. spcs. | | | | | | | | | | | | | | | | | | | | | | | | |
| Span 2-4 eq. spcs. | | | | | | | | | | | | | | | | | | | | | | | | |
| 3 eq. spcs. | | | | | | | | | | | | | | | | | | | | | | | | |
| Span 4-6 equal spaces | | | | | | | | | | | | | | | | | | | | | | | | |
| Span 5-6 equal spaces | | | | | | | | | | | | | | | | | | | | | | | | |
| Span 6-6 equal spaces | | | | | | | | | | | | | | | | | | | | | | | | |
| INTERIOR BEAM AND GIRDER | a | b | c | d | e | f | g | h | i | j | k | l | m | n | o | p | q | r | s | t | u | v | w | x |
| Deflection due to weight of steel | 0/8 | 0/8 | 1/16 | - | 1/16 | - | 0/8 | 3/16 | 1/8 | - | 1/16 | 1/16 | 1/16 | - | 1/16 | 0/8 | 3/16 | 0/8 | 1/16 | 1/16 | 0/8 | 3/16 | 1/8 | 0/8 |
| Deflection due to remaining D.L. | 5/16 | 3/8 | 7/16 | 1/8 | 3/16 | 1/8 | 7/16 | 5/8 | 1/4 | 1/8 | 1/4 | 1/4 | 3/8 | 1/8 | 3/8 | 7/16 | 1/2 | 3/8 | 0/8 | 0/8 | 0/8 | 0/8 | 0/8 | 0/8 |
| Total D.L. Deflection | 7/16 | 1/2 | 1/4 | 1/16 | 1/4 | 1/16 | 9/16 | 13/16 | 5/8 | 1/8 | 5/16 | 5/16 | 1/4 | 1/16 | 1/4 | 9/16 | 11/16 | 1/2 | 7/16 | 7/16 | 1/4 | 3/8 | 7/8 | 1/8 |
| EXTERIOR BEAM AND GIRDER | a | b | c | d | e | f | g | h | i | j | k | l | m | n | o | p | q | r | s | t | u | v | w | x |
| Deflection due to weight of steel | 0/8 | 0/8 | 1/16 | - | 1/16 | - | 0/8 | 3/16 | 1/8 | - | 1/16 | 1/16 | 1/16 | - | 1/16 | 0/8 | 3/16 | 0/8 | 1/16 | 1/16 | 0/8 | 3/16 | 1/8 | 0/8 |
| Deflection due to remaining D.L. | 3/8 | 1/2 | 1/4 | 0/8 | 1/4 | 1/16 | 11/16 | 5/8 | 1/8 | 1/4 | 5/16 | 1/4 | 1/8 | 1/16 | 1/4 | 9/16 | 5/8 | 7/16 | 0/8 | 3/8 | 1/2 | 11/16 | 1/16 | 7/16 |
| Total D.L. Deflection | 1/2 | 5/8 | 5/16 | 0/8 | 5/16 | 1/16 | 5/8 | 1 | 3/8 | 1/8 | 5/16 | 3/8 | 1/8 | 1/16 | 5/16 | 11/16 | 9/16 | 3/8 | 1/4 | 5/8 | 7/8 | 7/8 | 0/8 | 7/8 |

DEAD LOAD DEFLECTIONS IN INCHES

NOTES:
For notes and details not shown, See CSB-2-56 Sh. 2 of 6, Section B-B (8'-0" Maximum) and Section C-C.

MICHAEL BAKER JR., CONSULTING ENGINEERS
ROCHESTER, PENNSYLVANIA

END DAM & CURB DETAILS
BRIDGE NO. LAK -I-0150
UNDER EUCLID SPUR (RAMP "B")

LAKE COUNTY STA. 77+79.00

| | | | | | |
|----------|--------|--------|---------|--------------------|---------|
| Designed | Drawn | Traced | Checked | Reviewed-Date | Revised |
| C.V.P. | C.V.P. | F.E.H. | Y.G. | H.G.H. 12-30-58 | |