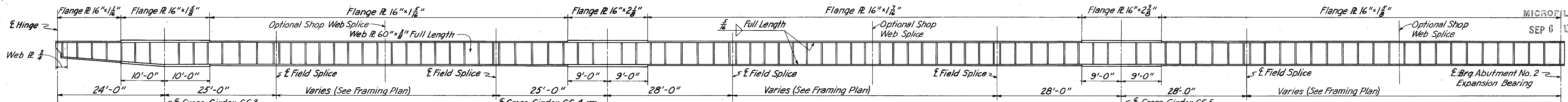


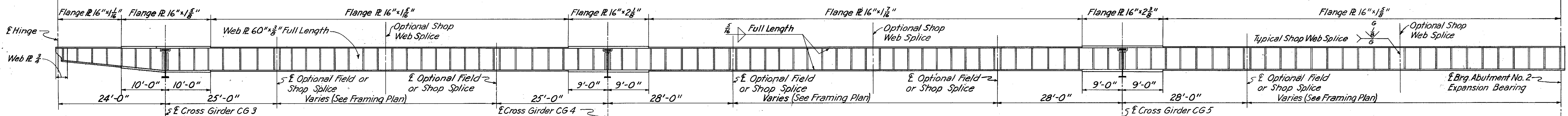
| FED. RD. DIVISION | STATE | PROJECT    | TYPE FUNDS |
|-------------------|-------|------------|------------|
| 2                 | OHIO  | 1-1103 (B) |            |

416  
458

MICROFILMED  
SEP 6 1965

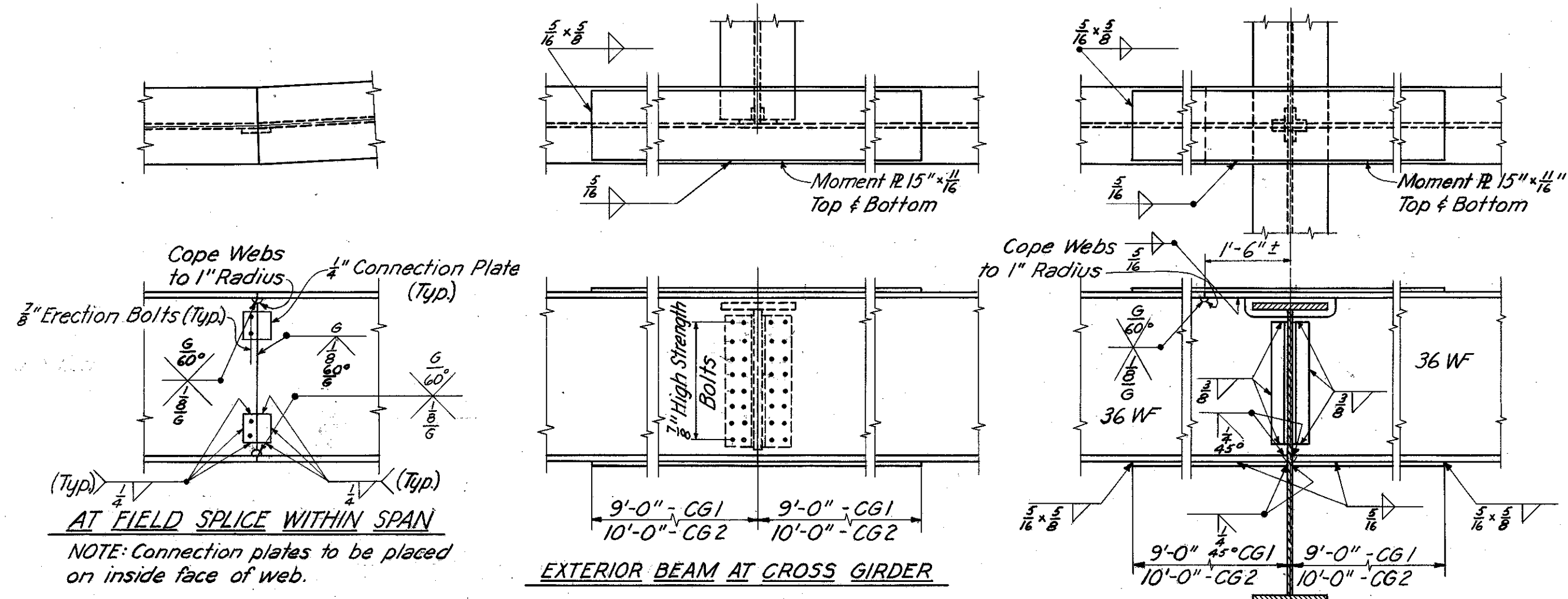


ELEVATION OF EXTERIOR WELDED BEAMS

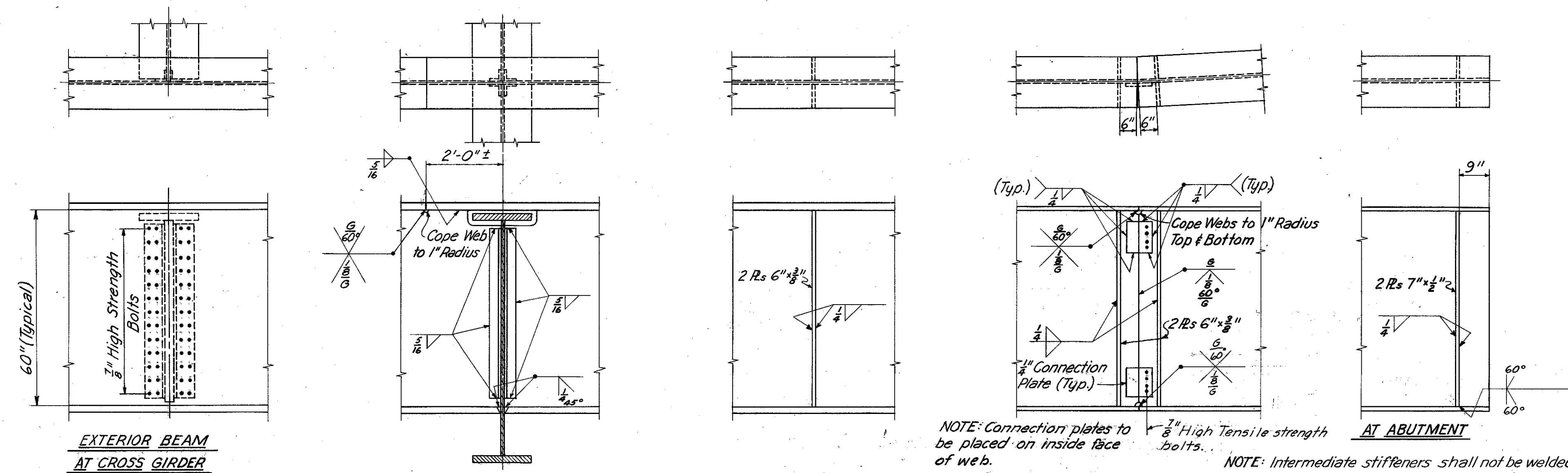


ELEVATION OF INTERIOR WELDED BEAMS

NOTE: Shop web splices will be permitted at mid point between field splices in spans 4+5 and at mid point between field splice and abutment end in span 6 at the option of the contractor.



TYPICAL ROLLED BEAM DETAILS



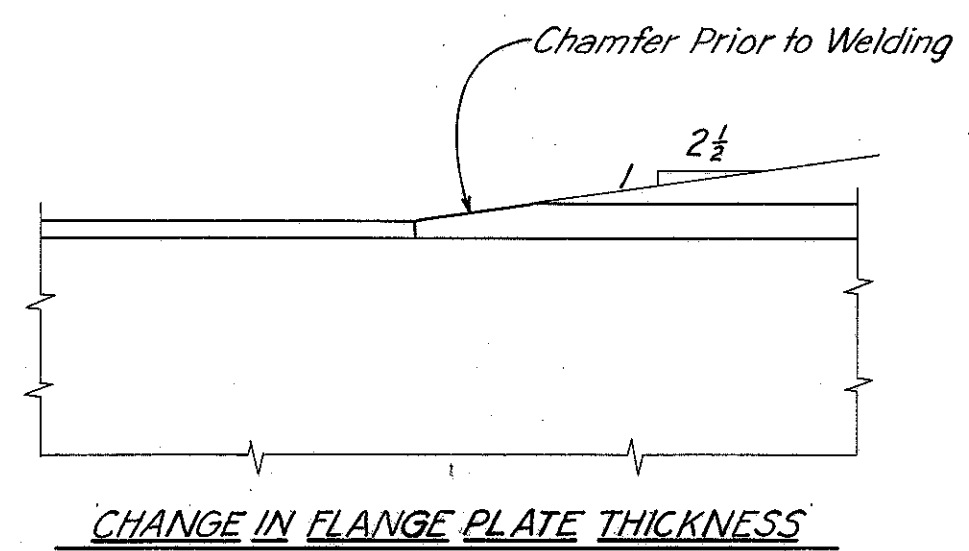
TYPICAL WELDED BEAM DETAILS

NOTE: Connection plates to be placed on inside face of web.

NOTE: Intermediate stiffeners shall not be welded to the flanges but shall be fitted to the flanges in close enough contact that when the shop paint is applied it will fill and close the openings. The bearing stiffeners over abutments shall be grooved and fully butt welded to the lower flange and fitted in close contact, without welding at the upper flange.

SHOP DRAWINGS for the girders shall include an overall layout with dimensions showing the relative unloaded vertical position of each girder or girder segment with respect to the others in the same girder line and with respect to a full length base or work line taking into account camber and the profile of the highway.

SHOP ASSEMBLY: At least three adjacent girder segments shall be assembled in the shop in their correct unloaded positions as shown on the shop drawing layout required in the above note so that the faced joints for welding the segments together may be checked for proper fit-up.



CHANGE IN FLANGE PLATE THICKNESS

|  |        |        |                |                    |         |
|--|--------|--------|----------------|--------------------|---------|
| MICHAEL BAKER JR., CONSULTING ENGINEERS<br>ROCHESTER, PENNSYLVANIA |        |        |                |                    |         |
| <b>WELDED BEAM ELEVATIONS AND DETAILS</b>                          |        |        |                |                    |         |
| BRIDGE NO. LAK-1-0150<br>UNDER EUCLID SPUR (RAMP "B")              |        |        |                |                    |         |
| LAKE COUNTY  |        |        | STA. 7.7+79.00 |                    |         |
| Designed   | Drawn  | Traced | Checked        | Reviewed-Date      | Revised |
| C.V.P.   | C.V.P. | F.E.H. | Y.G.           | M.G.H.<br>12-30-58 |         |