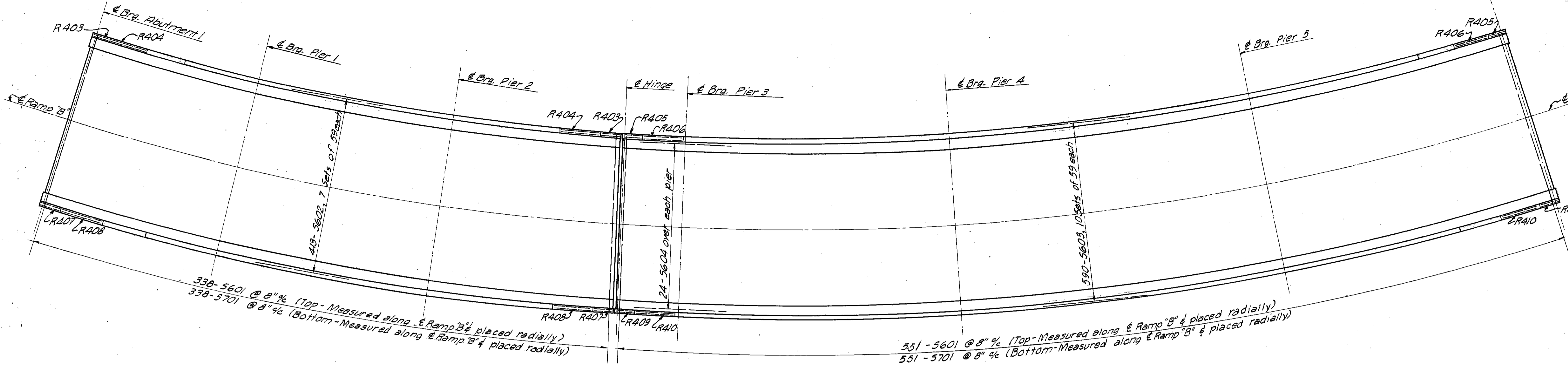


FED. RD. DIVISION	STATE	PROJECT	TYPE FUNDS
2	OHIO	1-1103 (18)	

415
458

CUYAHOGA & LAKE COUNTIES
LAK-1-0.00
MICROFILMED
SEP 6 1965
CUY-1-15.91



DECK SLAB PLAN

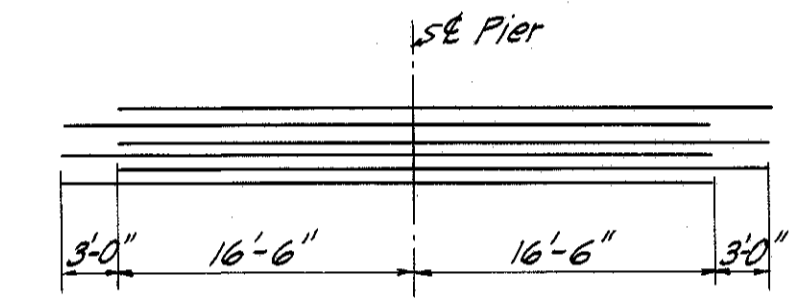
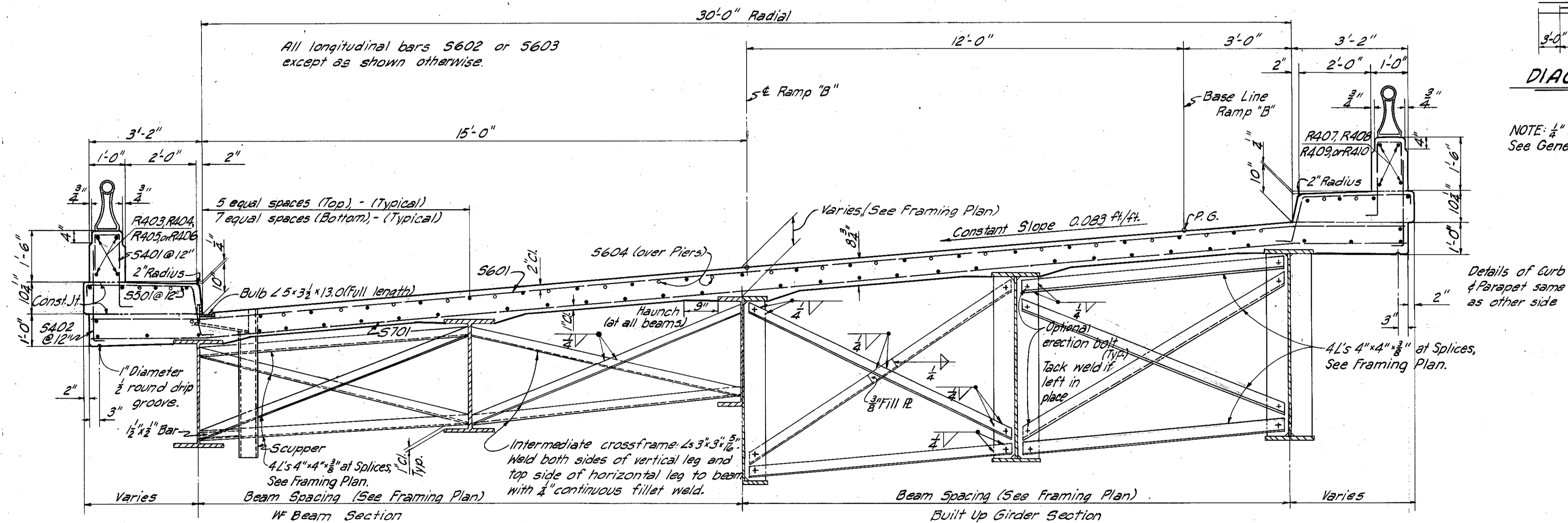


DIAGRAM SHOWING STAGGER OF S604

NOTE: $\frac{1}{4}$ " Expansion Joints in Parapet.
See General Plan & Elevation for location.



TYPICAL CROSS SECTION

DECK PLACING PROCEDURE: In placing the deck concrete, construction joints will be permitted parallel to the transverse reinforcing steel and near the middle of any span. Because of the flow of curing water, from the surface of previously-placed deck concrete, the sequence of pours shall be upgrade, starting at the lowest end (or ends) on an inclined grade or vertical curve (or at an intermediate low point for a sagged vertical curve).

NOTES

- Concrete and reinforcing steel above parapet construction joint included with railing for payment.
- Concrete shall be Class "C".
- For Dead Load Deflection, refer to Sheet 418.

MICHAEL BAKER JR., CONSULTING ENGINEERS
ROCHESTER, PENNSYLVANIA

SLAB PLAN
BRIDGE NO. LAK-1-0150
UNDER EUCLID SPUR (RAMP "B")

LAKE COUNTY STA. 77+79.00

Designed	Drawn	Traced	Checked	Reviewed-Date	Revised
E.F.W. G.M.W. W.R.B.	J.M.B.	M.S.	Y.G.	4.6.4.12.30-58	