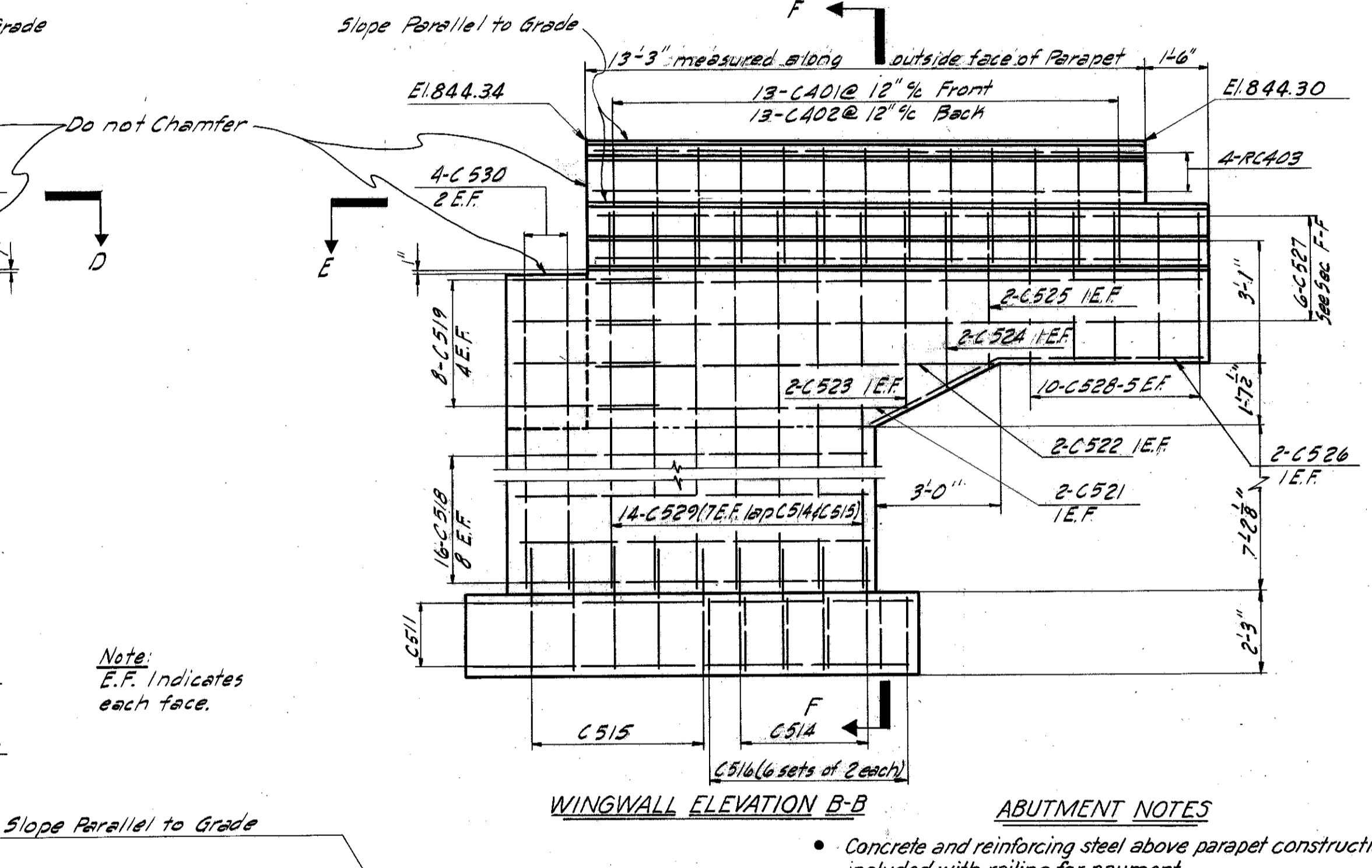
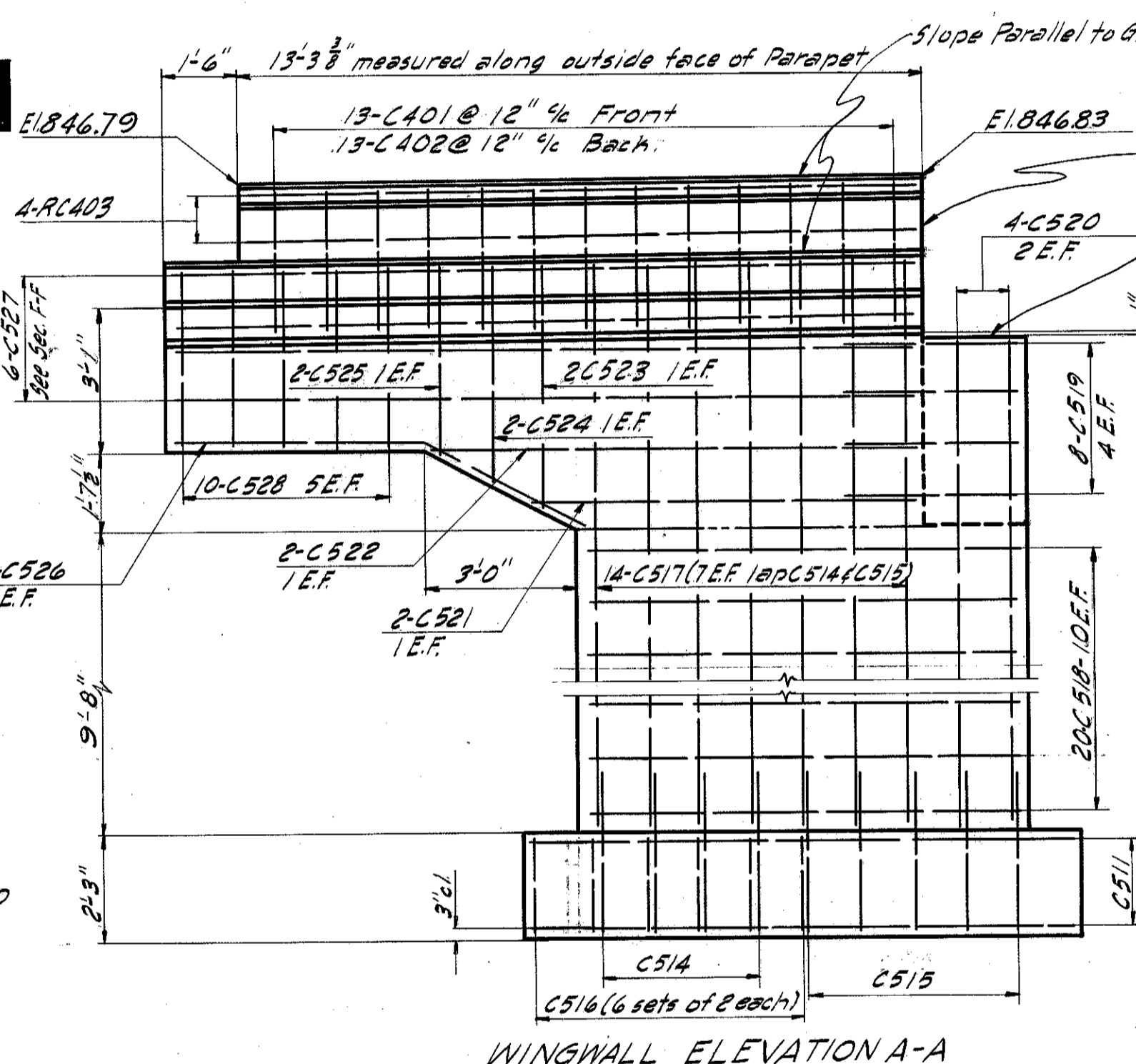
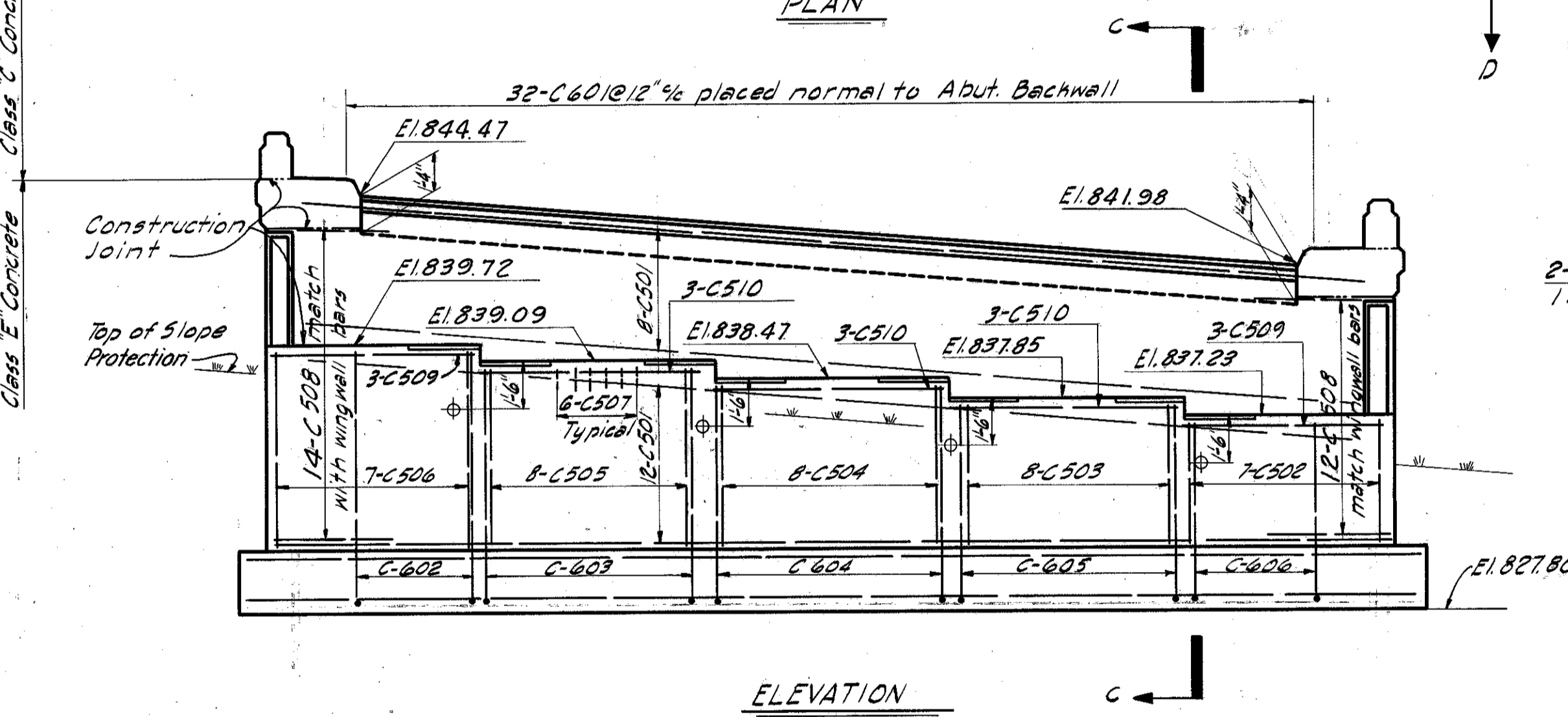
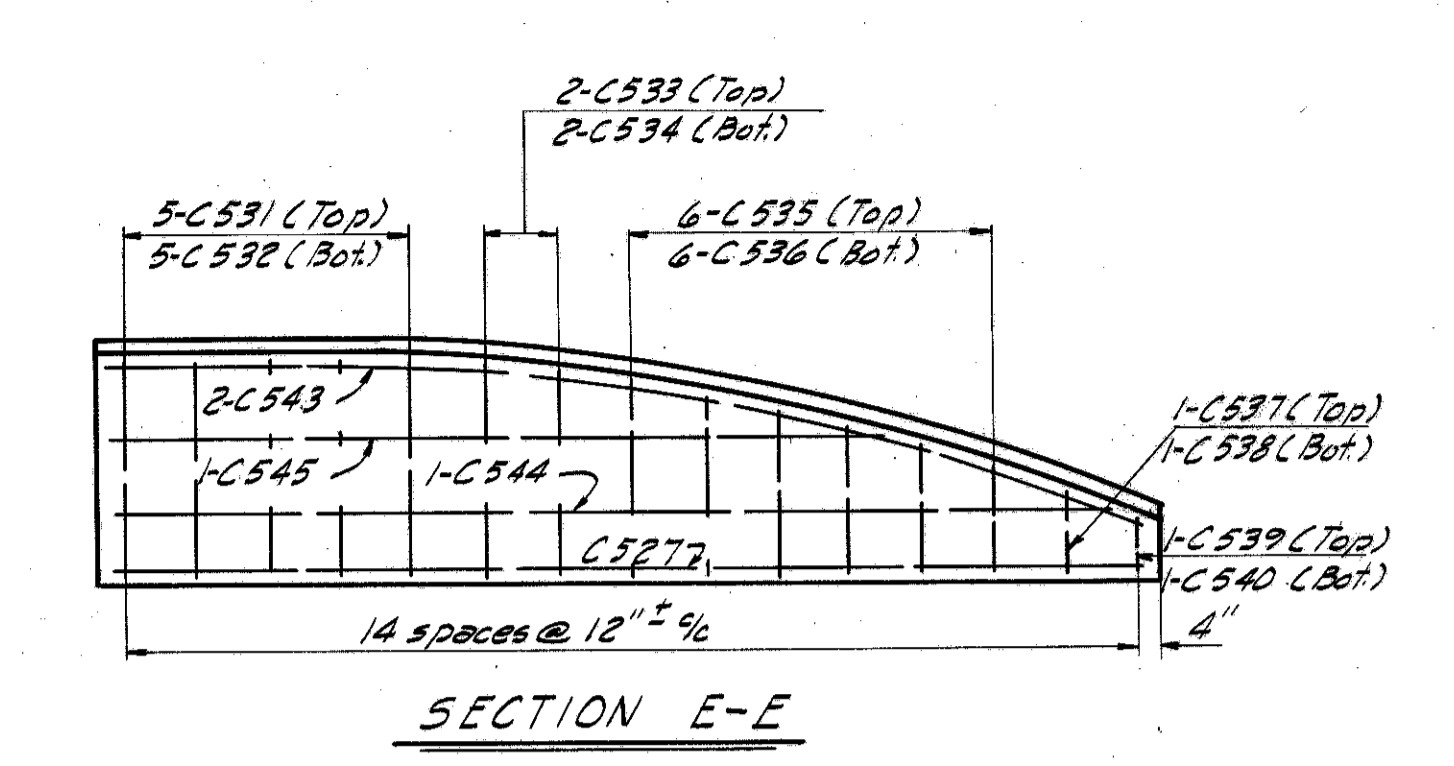
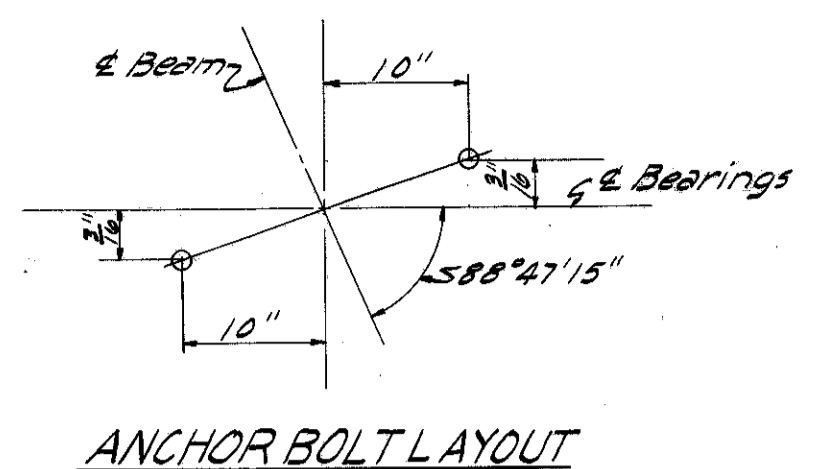
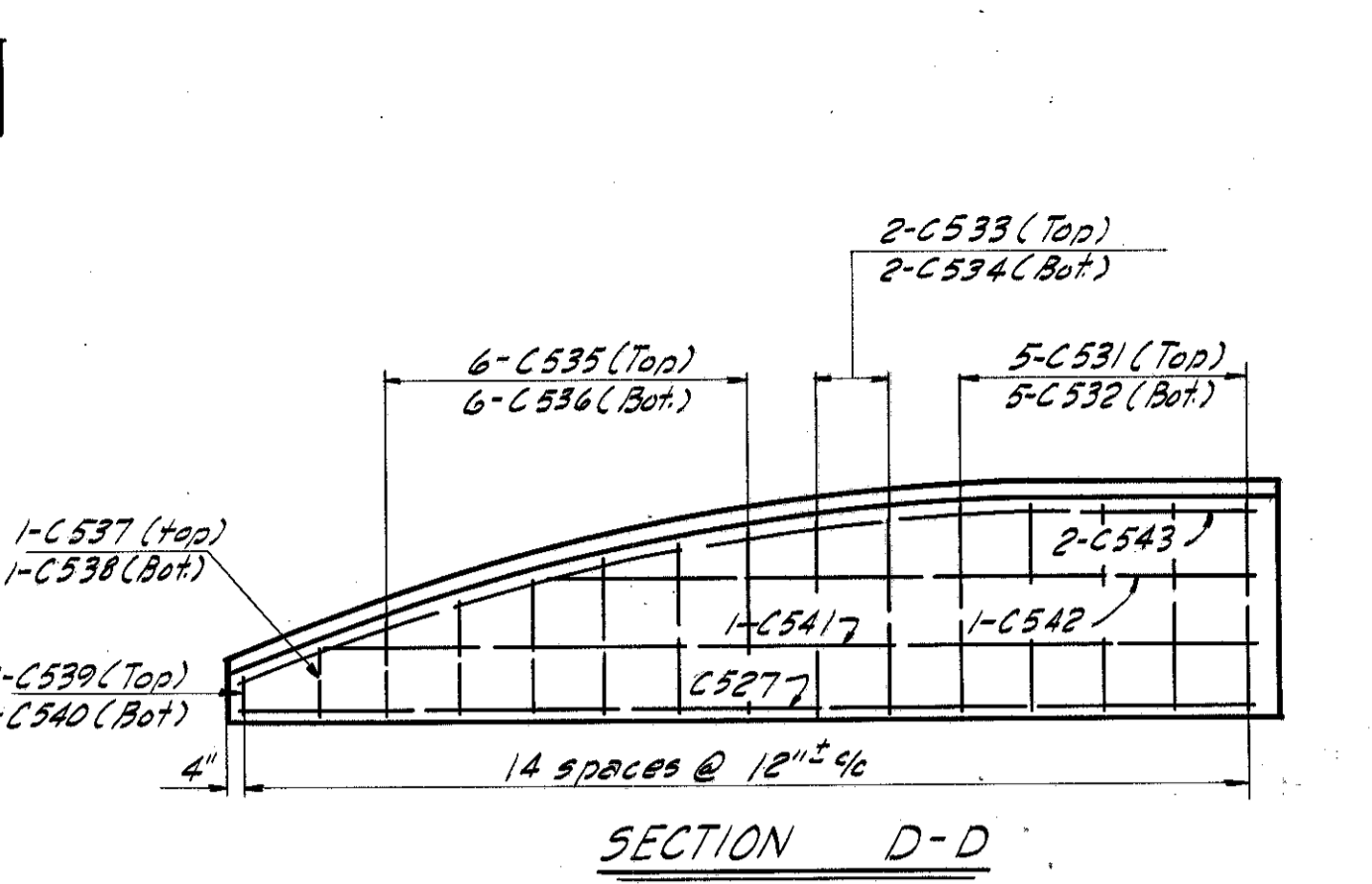
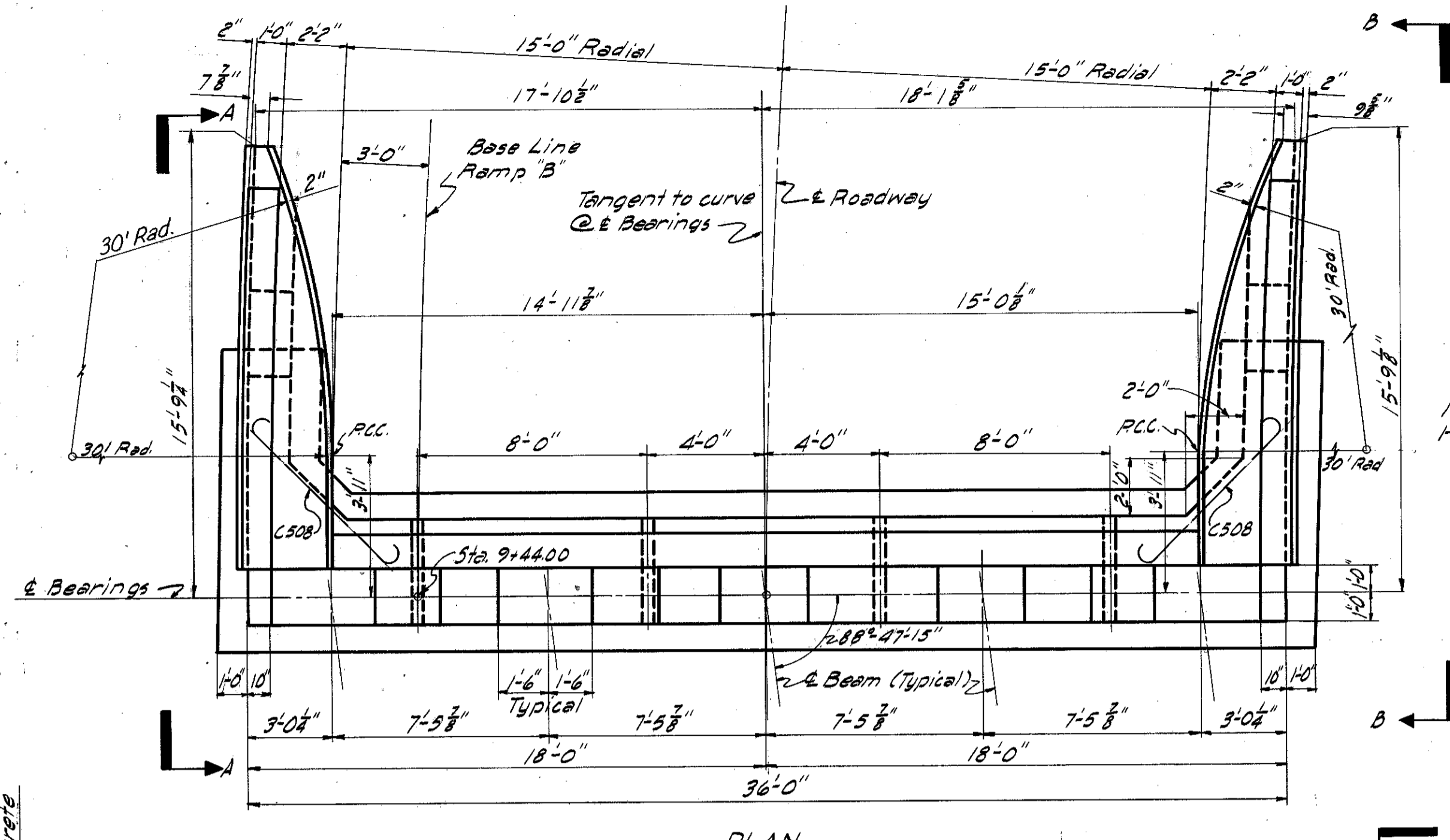


FED. RD. DIVISION	STATE	PROJECT	TYPE FUNDS
2	OHIO	I-1103 (18)	

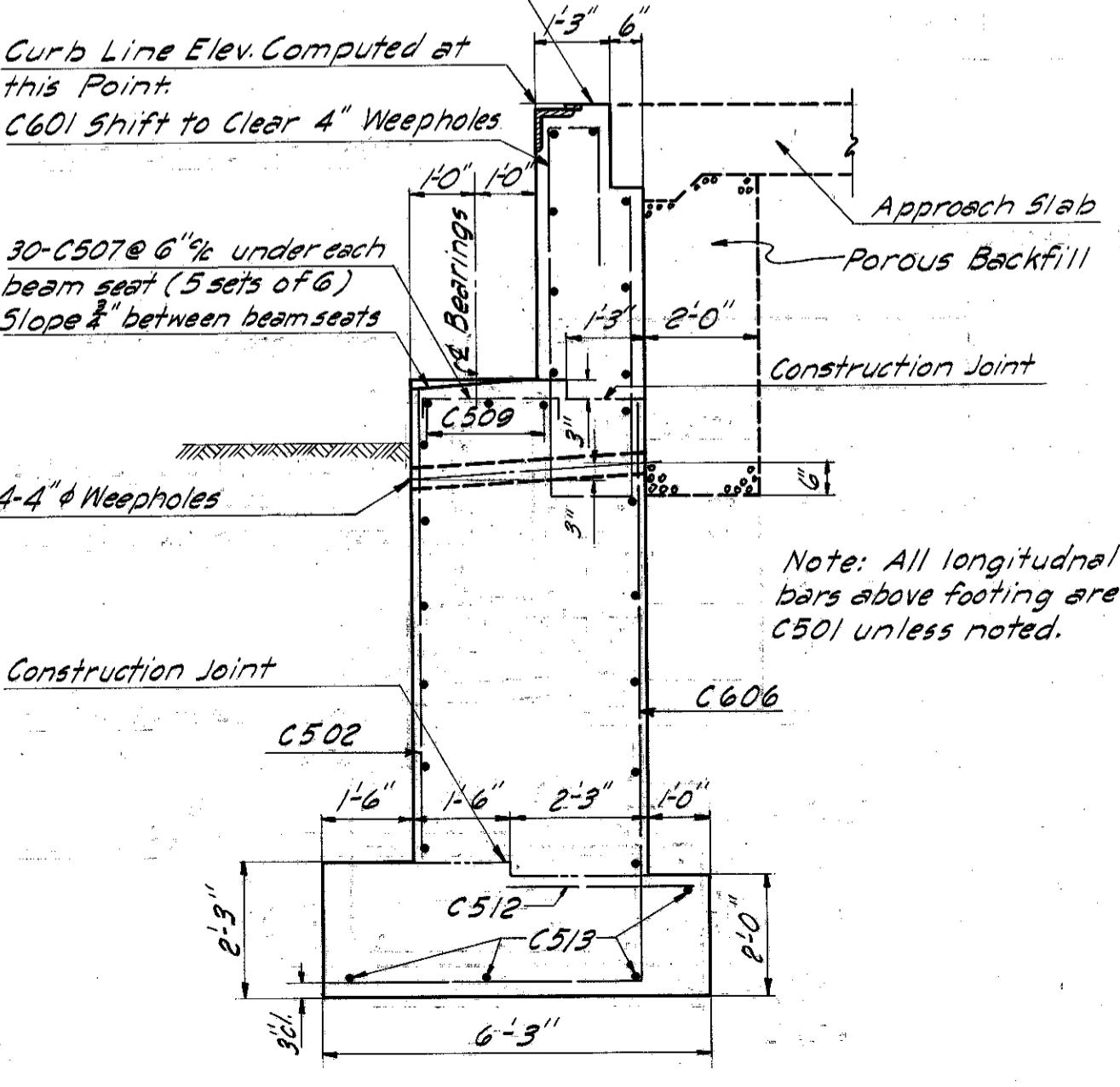
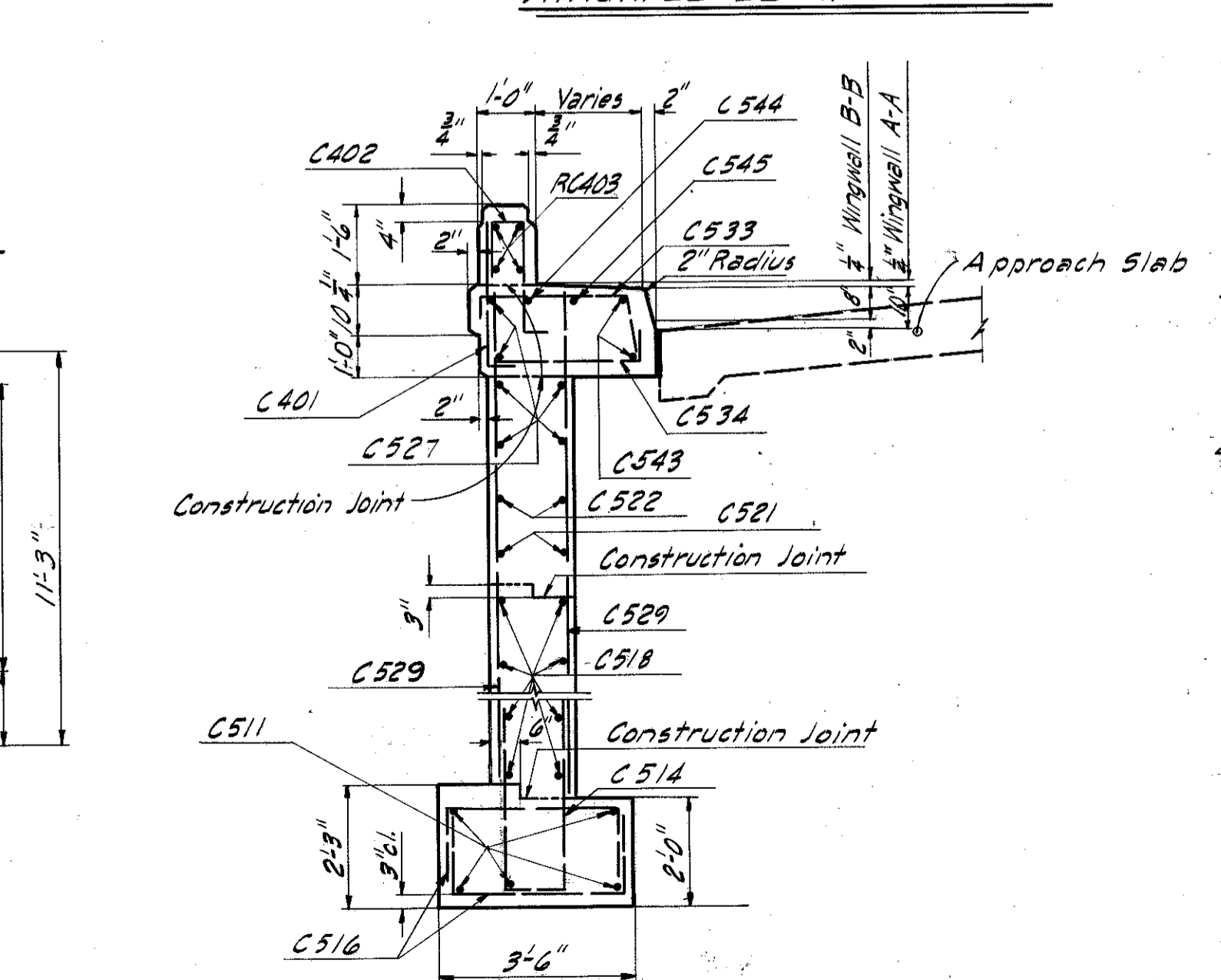
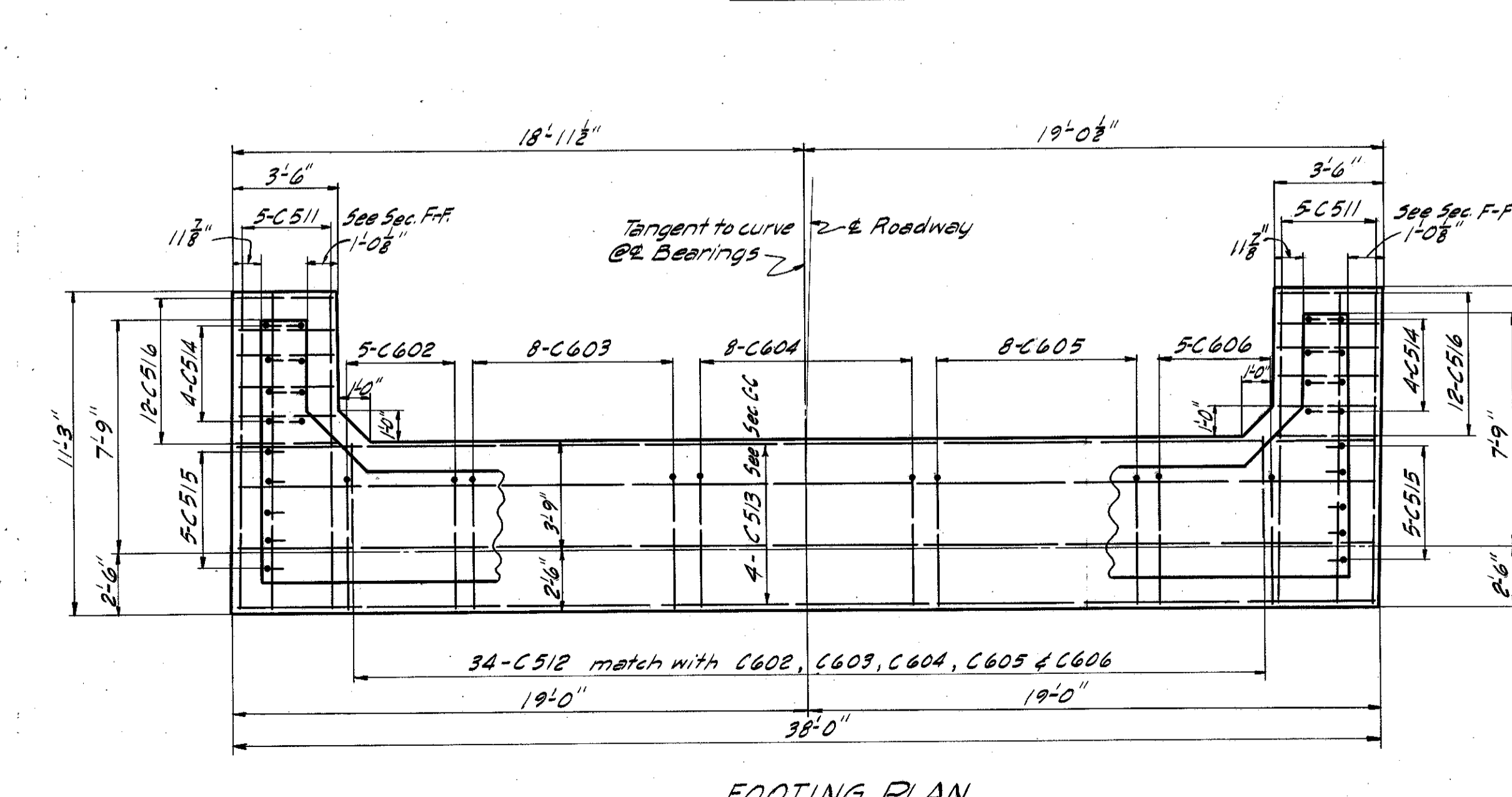
410
458



Note: E.F. Indicates each face.

ABUTMENT NOTES

- Concrete and reinforcing steel above parapet construction joint included with railing for payment.
- Porous backfill 2 feet thick full length of abutment shall extend up to the underside of the approach slab.
- Concrete above bridge seat construction joint shall not be placed until after the steel work is erected, but shall be placed before placing the deck slab.
- All abutment concrete shall be Class "E."
- Railing not shown. See "General Plan and Elevation" for railing post spacing. For Guard Rail and connection detail see "Abutment No. 2".
- Guard Rail and connection to be included in cost of bridge railing.
- Design foundation pressure is 4 Tons per sq. ft.



MICHAEL BAKER JR., CONSULTING ENGINEERS
ROCHESTER, PENNSYLVANIA

ABUTMENT NO. 1
BRIDGE NO. LAK-1-0150
UNDER EUCLID SPUR (RAMP "B")

DESIGNED	DRAWN	TRACED	CHECKED	REVIEWED-DATE	REVISED
G.S.W.	A.C.M.	A.C.M.	Y.G.	H.G.H. 12-30-58	A-19-60

LAKE COUNTY STA. 77+79.00