

MICROFILMED
SEP 6 1965

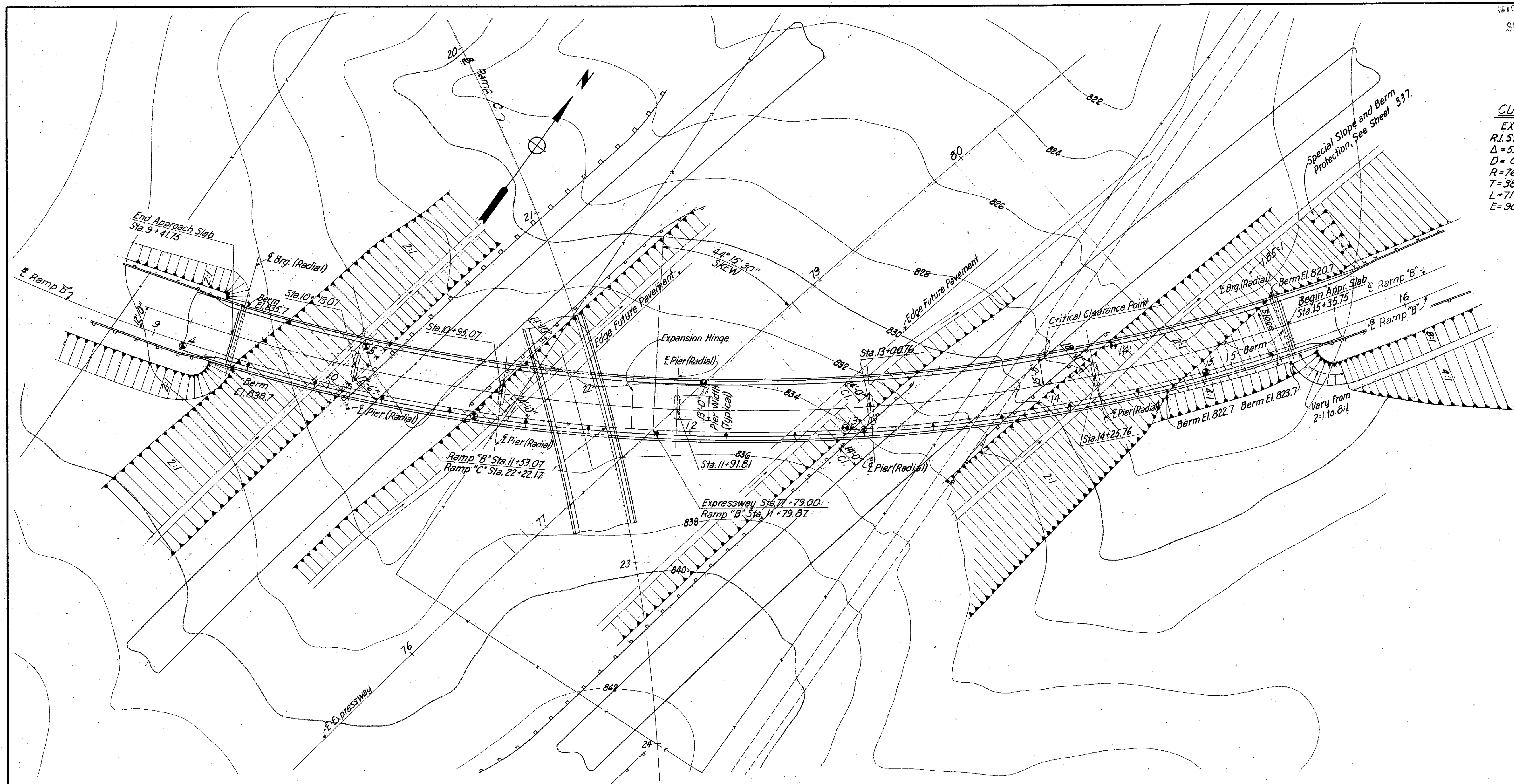
FED. RD. DIVISION	STATE	PROJECT	TYPE FUNDS
2	OHIO	1-1103 (18)	

408
458

4.05 MI. ± NORTH OF
MAYFIELD HEIGHTS
LAK-1-0.00
CUY-1-15.91

CURVE DATA
EXPRESSWAY
P.I. Sta. 96+01.97
Δ = 53°19'47" Rt.
D = 0°45'00"
R = 7639.44'
T = 3836.37'
L = 7110.63'
E = 909.17'

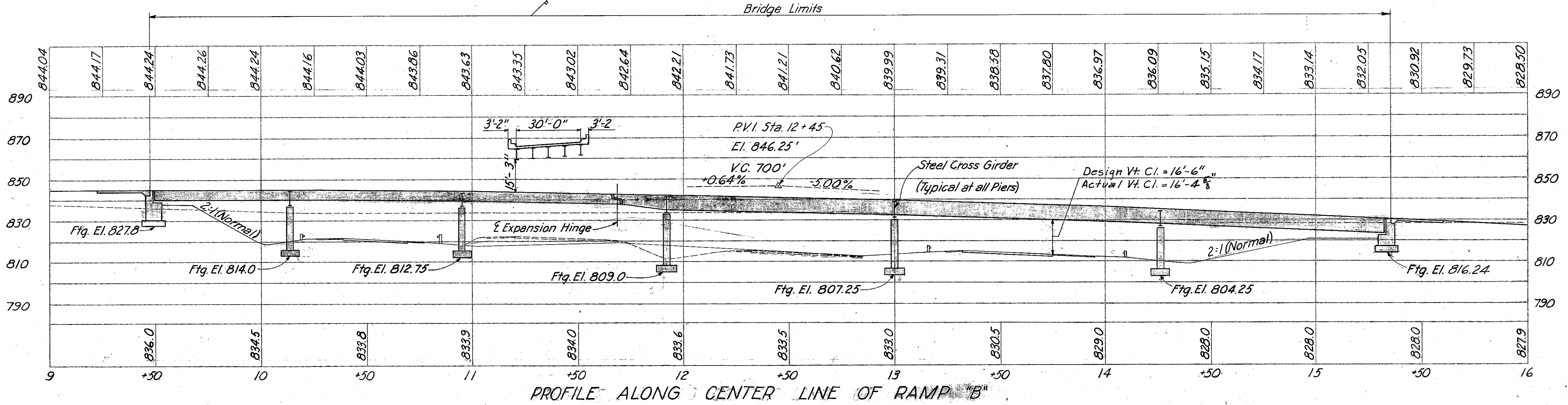
CURVE DATA
RAMP "B"
P.I. Sta. 15+02.14
Δ = 79°36'06" Lt.
D = 6°00'00"
Ts = 922.85'
Lc = 1076.69'
Es = 291.58'
Rc = 954.93'
Ls = 250'
P = 2.73'
K = 124.93'



- ⊙ Indicates Boring Locations
- ▲ Indicates Delineators

NOTES
FOUNDATION SOUNDINGS: Foundation design and foundation quantities are based on a study of borings and soil samplings made at the site. This sounding information may be inspected in the office of the Bureau of Bridges in Columbus or in the Division Office, but the State does not guarantee the accuracy thereof.

Preliminary Design
9-23-57 Revised 11-20-57



PROPOSED STRUCTURE
TYPE: Continuous steel beams & girders with reinf. concr. deck and substructure.
SPANS: 69', 82', 97' (Hinged); 109', 125', 108' Brgs.
ROADWAY: 30'-0" % of 2'-2" Safety Curbs.
LOAD FREQUENCY: C.F. = 2000 (57)*
SKEW: 44°15'30" L.F.
WEARING SURFACE: 1" Monolithic Concr.
APPROACH SLABS: Special Design (25' Long)
ALIGNMENT: 6°00'00" Left Curve.
SUPERELEVATION: .083' per ft.
* Adequate for AASHTO alternate loading.

MICHAEL BAKER, JR., CONSULTING ENGINEERS
ROCHESTER, PENNSYLVANIA

SITE PLAN
BRIDGE NO. LAK-1-0150
UNDER EUCLID SPUR (RAMP "B")
LAKE COUNTY
SCALE: 1" = 30'
STA. 77+79.00

PRESENT	TOPOGRAPHY	DESIGNED	PROPOSED	WORK
Surveyed	Drawn	Designed	Drawn	Checked
M.B. Jr.	W.A.J.	W.R.B.	W.A.J.	J.W.
			Checked	Reviewed
			A.C.M.	H.C.H.
				12-30-58