

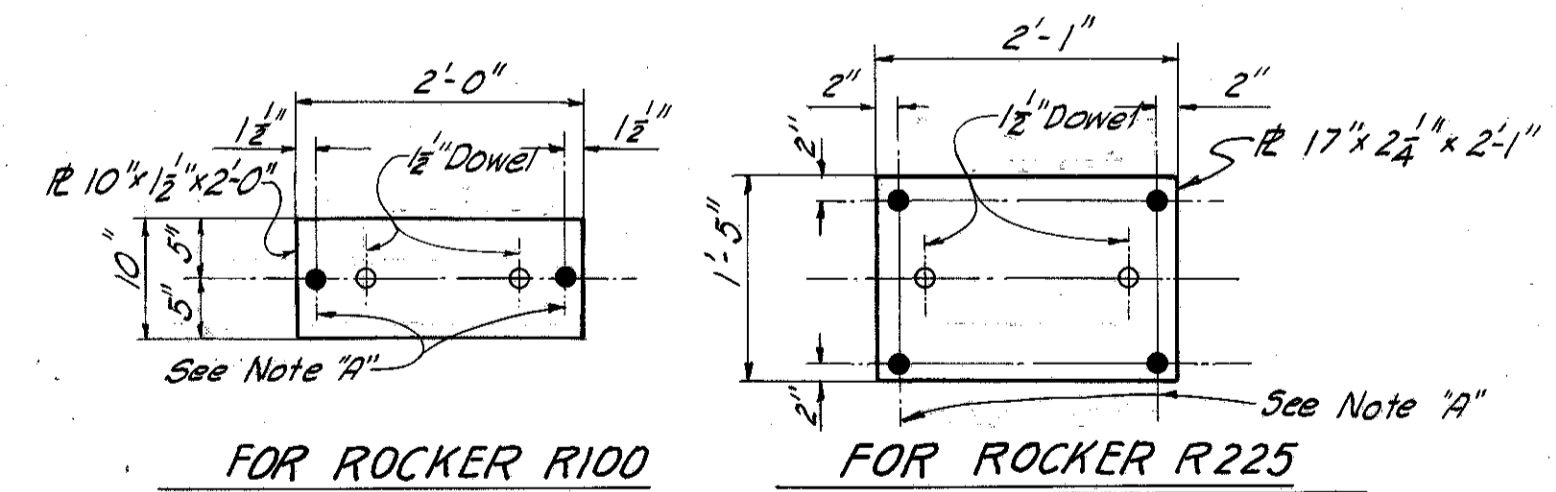
End crossframe 4' x 4' x 1/8".  
See Standard Drawing  
CSB-2-56, revised 2-59,  
Sheet 2 of 6, Section B-B  
(for beam spacing 8'-0" or  
less measured parallel to  
end dam.

	A	B	C	D	E	F	G	H	I
Beam B1	81'-2 3/8"	90'-3"	81'-3 3/8"	19'-0 3/4"	66'-8 3/4"	88'-2 1/8"	89'-2 1/8"	69'-1"	
Beam B2	80'-7"	89'-6 3/8"	80'-7 1/8"	18'-11"	66'-2 1/2"	87'-6 1/8"	87'-6 3/8"	68'-6 3/4"	
Beam B3	79'-11 3/8"	88'-10 1/8"	80'-0 1/8"	18'-9 3/4"	65'-8 1/4"	86'-10 3/8"	86'-10 3/8"	68'-0"	
Beam B4	79'-3 3/4"	88'-1 1/8"	79'-4 1/8"	18'-7 3/4"	65'-2"	86'-2 1/8"	86'-2 1/8"	67'-5 3/4"	
Beam B5	78'-8 3/8"	87'-5 3/8"	78'-9 1/8"	18'-5 3/4"	64'-7 1/8"	85'-5 1/8"	85'-5 3/8"	66'-11"	

Note: Elevations at E are elevations before dead load deflections.

TABLE OF ELEVATIONS

	A	B	C	D	E	F	G	H	I
Beam B1	858.59	861.25	863.54	865.15	865.47	866.57	867.74	868.60	869.06
Beam B2	857.96	860.63	862.91	864.53	864.85	865.95	867.11	867.97	868.43
Beam B3	857.34	860.00	862.29	863.90	864.22	865.33	866.49	867.35	867.81
Beam B4	856.72	859.38	861.67	863.28	863.60	864.71	865.87	866.73	867.19
Beam B5	856.10	858.76	861.05	862.66	862.98	864.08	865.25	866.01	866.57



Note 19: 1/8" hole for 1/2" x 1'-8" swedge anchor bolt with sq. nut and washer. Set 1'-3" into concrete.

BASE PLATES FOR ROCKERS

(All details of Rockers to be in accordance with Standard RB-1-55 except detail of base plate as shown.)

PAINTING: After erection and after the shop coat has been cleaned and, where necessary, repainted in accordance with Sec. 5-B.04, an additional coat of the same paint as used in the shop shall be applied to the outside faces of the outside steel beams and all sides of the bottom flange.

- NOTES
- Refer to Standard Drawing CSB-2-56, Sheet 2 of 6 for detail of end dam.
  - Refer to Standard Drawing RB-1-55 for details of rockers and bolsters.

MICHAEL BAKER JR., CONSULTING ENGINEERS  
ROCHESTER, PENNSYLVANIA

**FRAMING PLAN**  
BRIDGE NO. LAK-1-0145  
UNDER EUCLID SPUR (RAMP "C")

LAKE COUNTY STA. 77+49.90

Designed	Drawn	Traced	Checked	Reviewed-Date	Revised
J.V.W.	W.R.B.	M.S.	Y.G.	H.G.H. 12-30-58	1-17-60 8-3-60