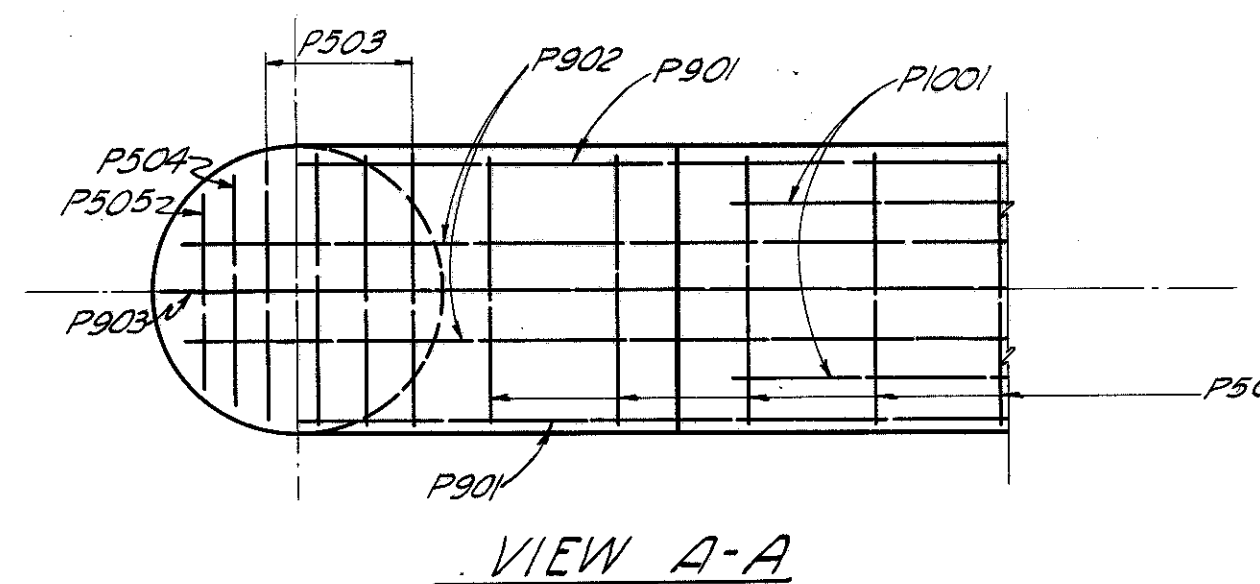
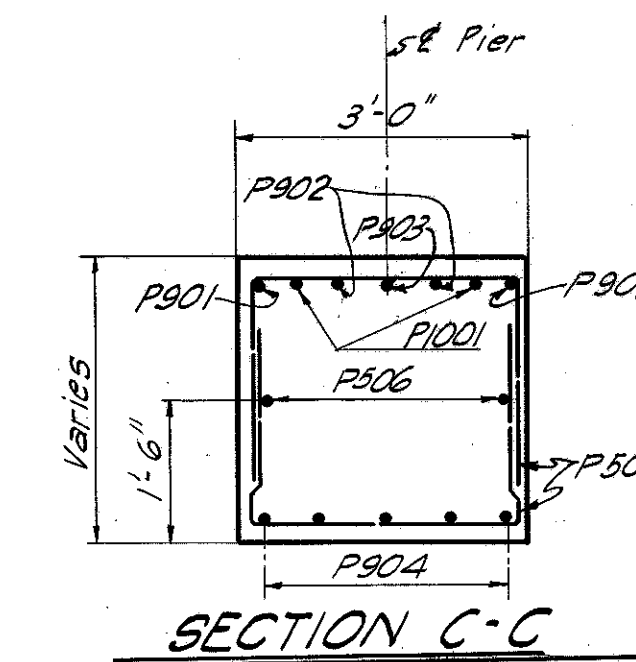


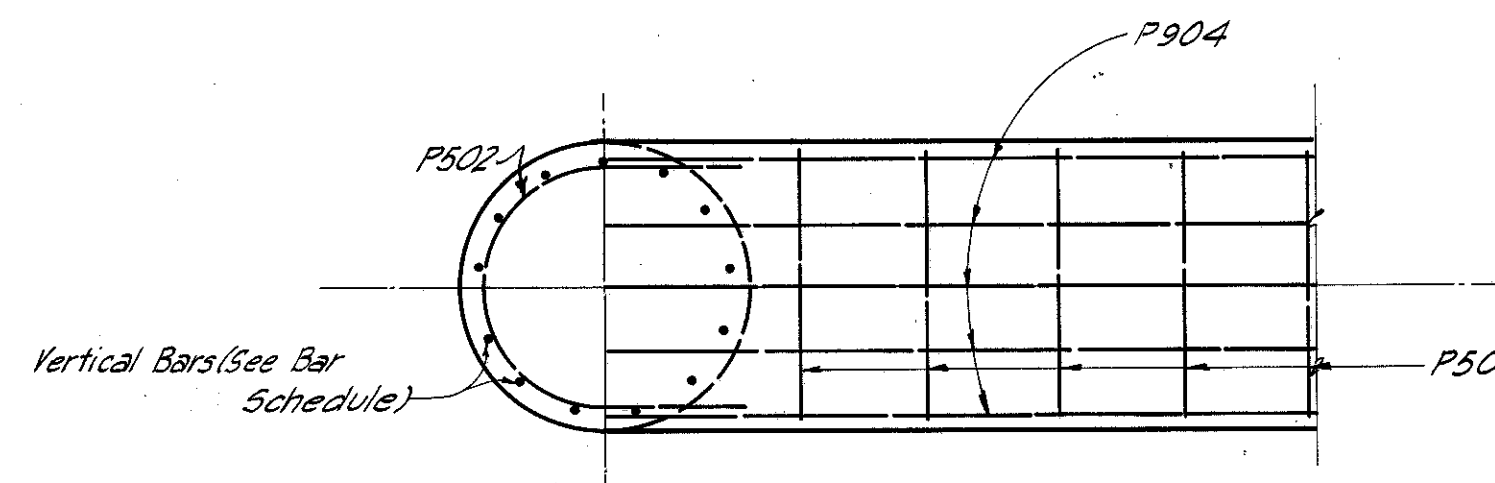
PLAN OF PIER CAP



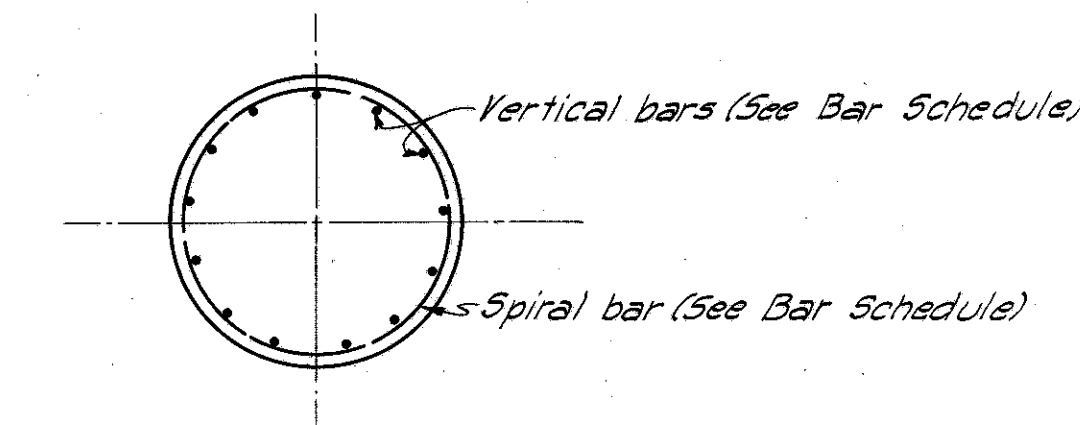
VIEW A-A



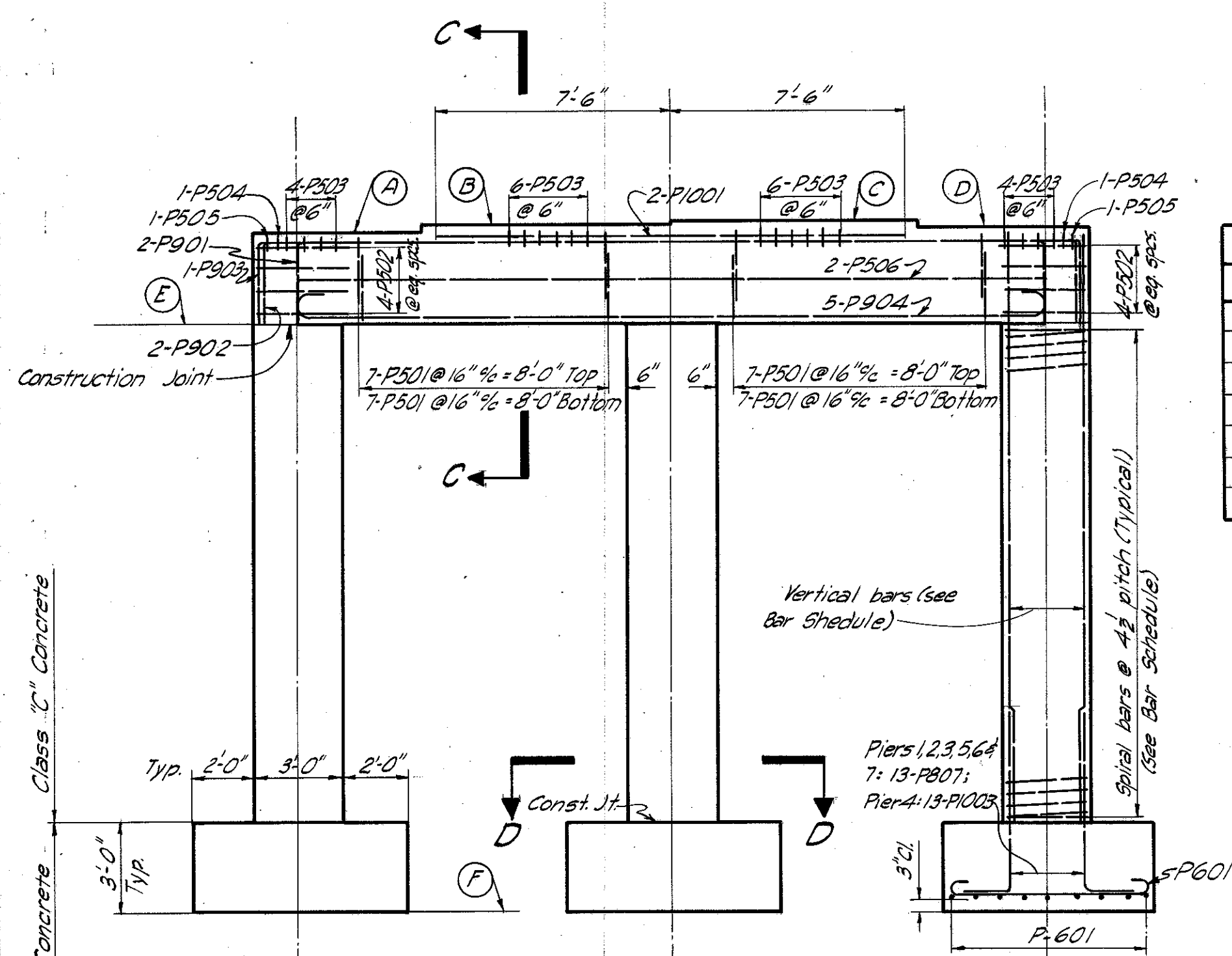
SECTION C-C



SECTION B-B

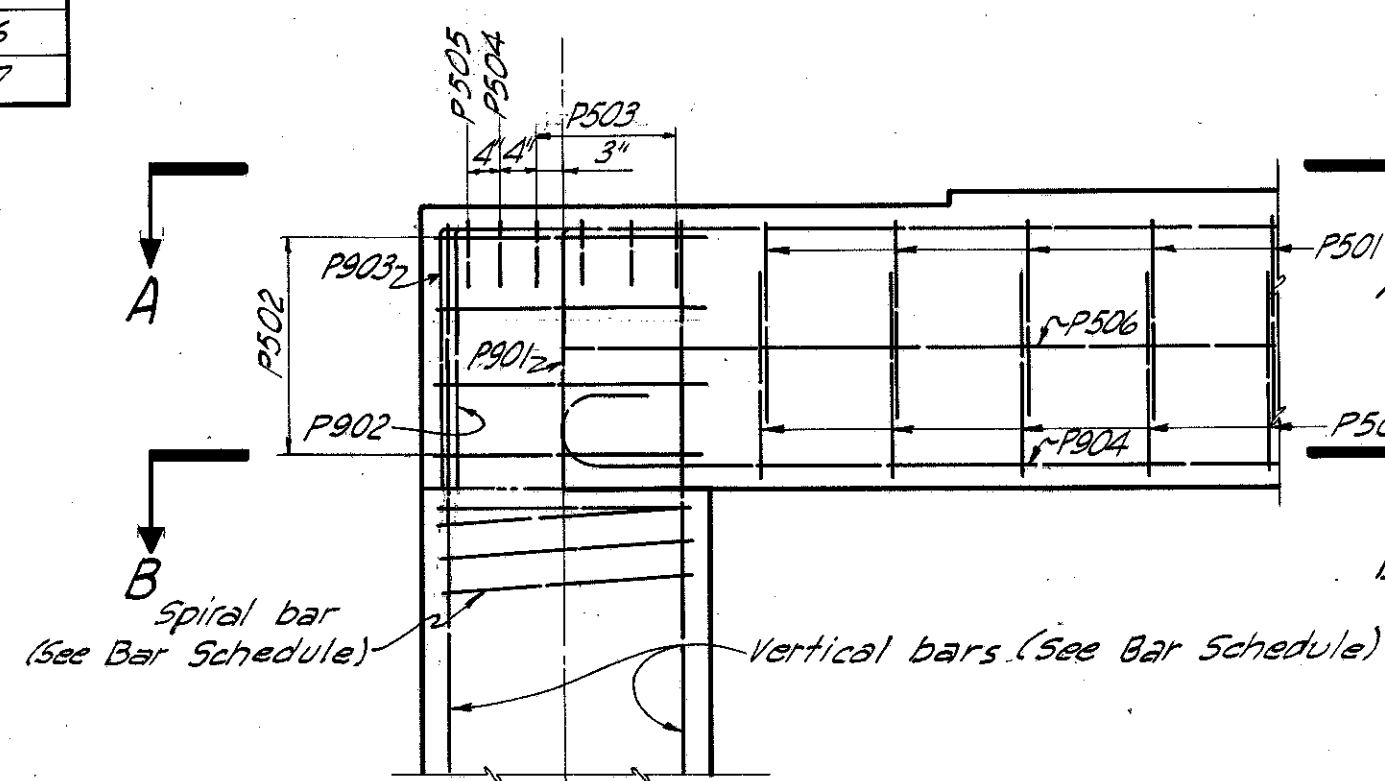


SECTION D-D

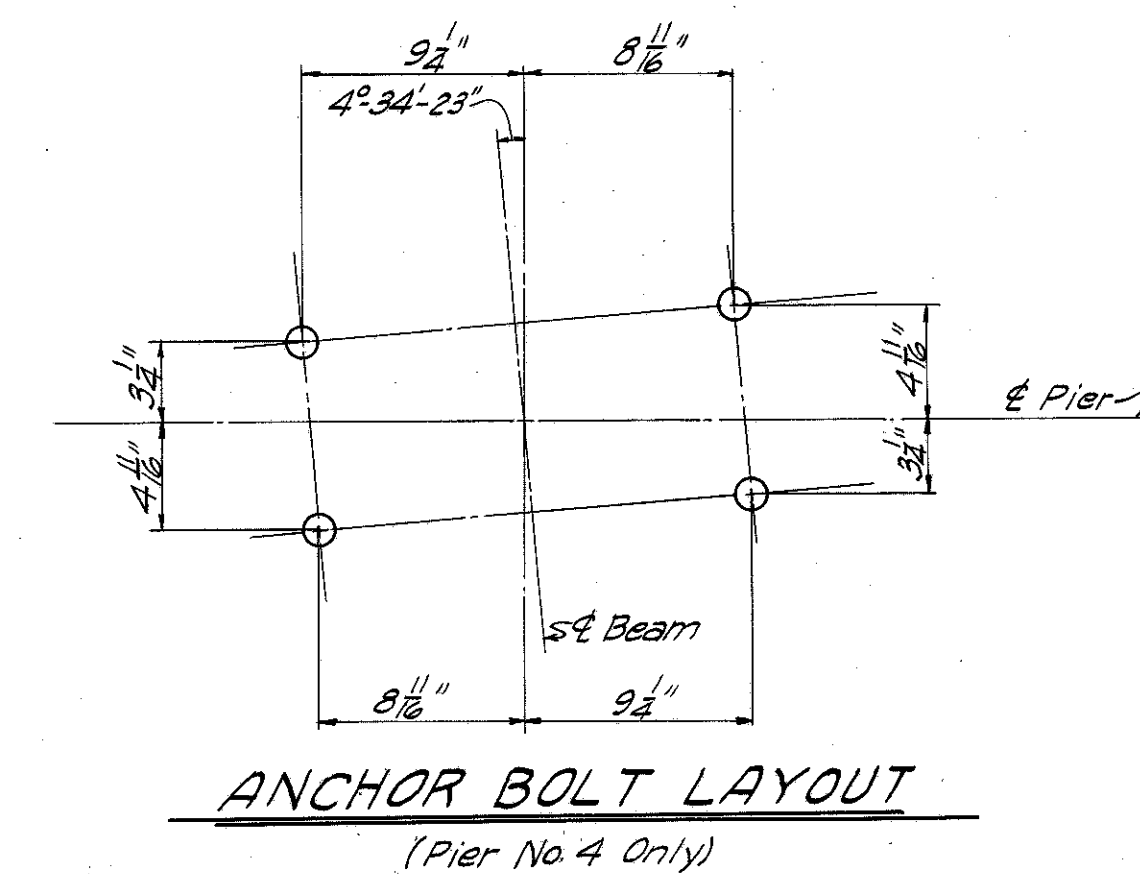


TYPICAL PIER ELEVATION

PIER NO.	VERTICAL	SPIRAL
1	13 - P801	SP401
2	13 - P802	SP402
3	13 - P803	SP403
4	13 - P1002	SP404
5	13 - P804	SP405
6	13 - P805	SP406
7	13 - P806	SP407



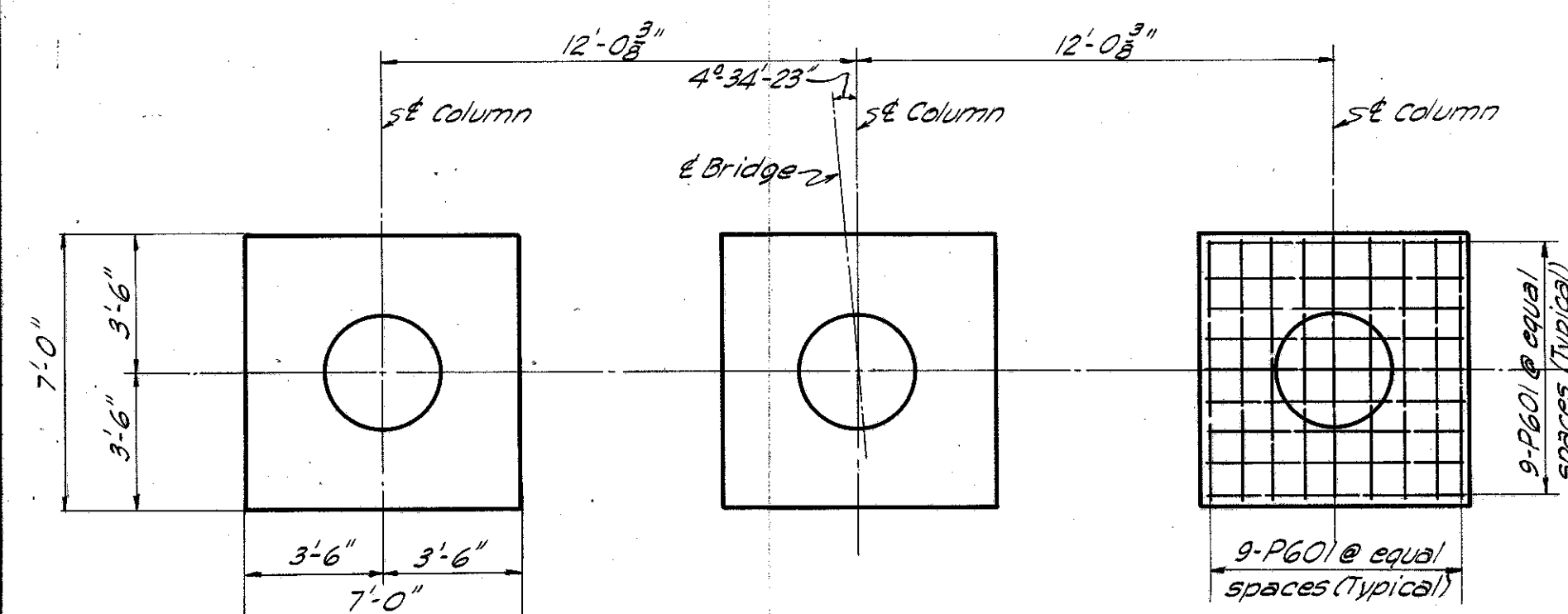
PARTIAL ELEVATION



ANCHOR BOLT LAYOUT
(Pier No. 4 Only)

NOTES

- Special care shall be taken in placing reinforcing steel in the pier cap @ Pier 4 so that it will not interfere with anchor bolts.



TYPICAL FOOTING PLAN

LOCATION	A	B	C	D	E	F
Pier 1	855.98	856.09	856.08	855.94	852.94	831.00
Pier 2	856.79	856.91	856.91	856.78	853.78	833.00
Pier 3	857.19	857.32	857.32	857.19	854.19	833.00
Pier 4	856.84	856.97	856.98	856.86	853.84	831.75
Pier 5	855.57	855.70	855.72	855.61	852.57	831.25
Pier 6	853.84	853.99	854.01	853.90	850.84	830.50
Pier 7	851.82	851.97	852.00	851.91	848.82	830.00

TABLE OF ELEVATIONS

MICHAEL BAKER JR., CONSULTING ENGINEERS
ROCHESTER, PENNSYLVANIA

PIERS
BRIDGE NO. LAK-1-0127
UNDER EDDY ROAD

LAKE COUNTY STA. 67+24.25

Designed	Drawn	Traced	Checked	Reviewed-Date	Revised
G.S.W.	M.S.	M.S.	H.C.M.	H.G.H. 12-30-58	4-19-60