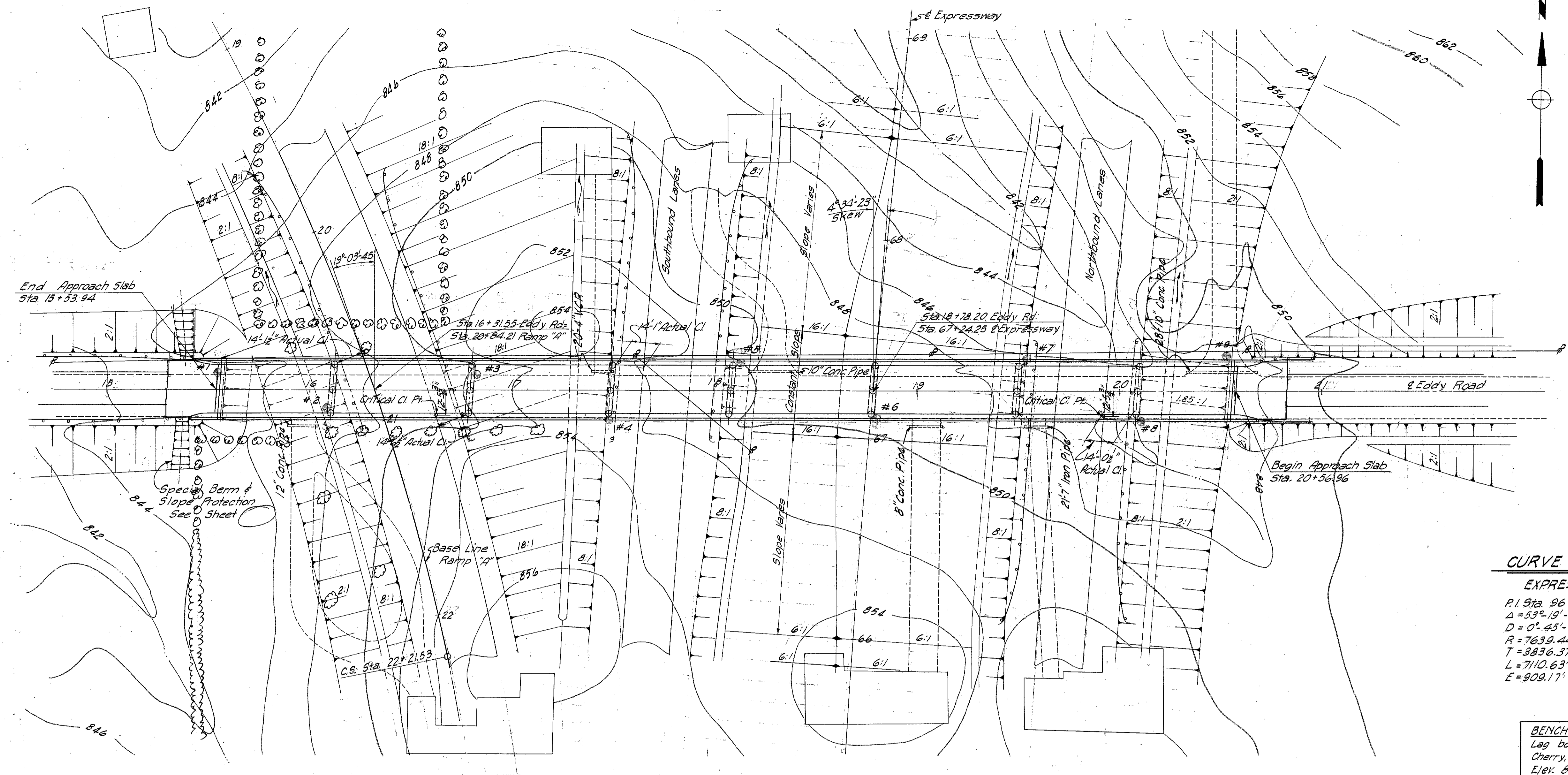


MICROFILMED  
SEP 6 1965

FED. RD. DIVISION	STATE	PROJECT	TYPE FUNDS
2	OHIO	I-1103(18)	458

3.82 MI<sup>±</sup> NORTH OF MAYFIELD HEIGHTS  
**CUYAHOGA & LAKE COUNTIES**  
CUY-1-15.91  
LAK-1-0.00



**CURVE DATA**

RAMP "A"	
CURVE	SPIRAL
P.I. Sta. 16+83.18	P.I. Sta. 53+55.25
$\Delta = 59^{\circ} 59' 27''$	$L_s = 400'$
$D = 5^{\circ} 00' 00''$	$\theta_s = 10^{\circ} 00' 00''$
$R = 1145.92'$	$P = 5.81'$
$T = 661.47'$	$K = 199.90'$
$L = 1199.82'$	$L.T. = 267.09'$
$E = 177.21'$	$S.T. = 133.72'$

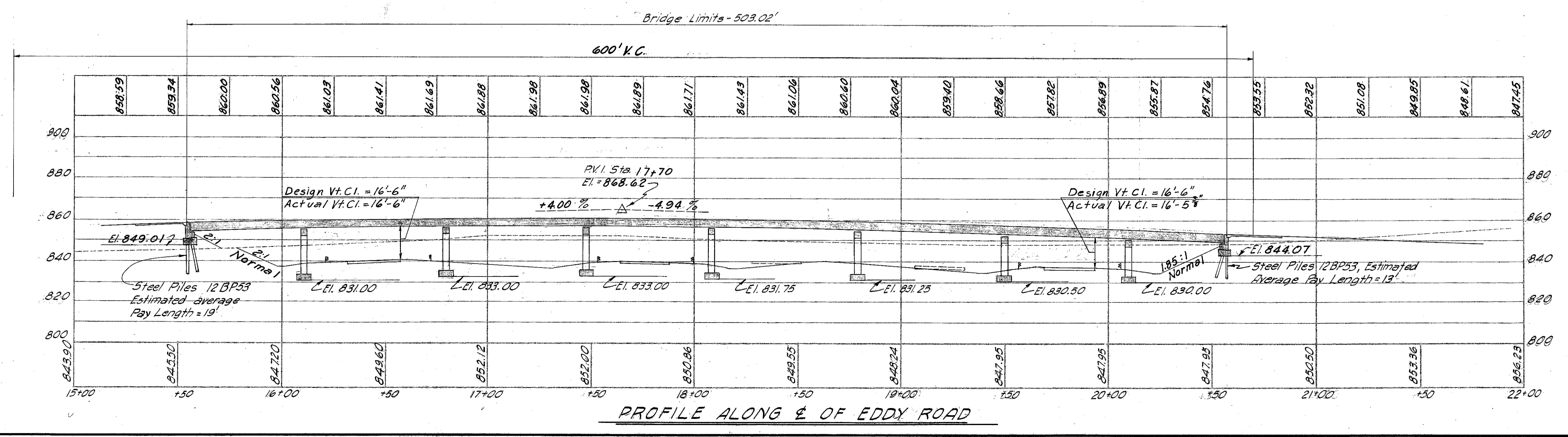
**CURVE DATA**

EXPRESSWAY
P.I. Sta. 96+01.97
$\Delta = 53^{\circ} 19' 47''$ Rt.
$D = 0^{\circ} 45' 00''$
$R = 7639.44'$
$T = 3836.37'$
$L = 7110.63'$
$E = 909.17'$

**BENCH MARK**  
Lag bolt in root of 18" Wild Cherry, 231' Lt. of Sta. 66+85  
Elev. 851.37

• Indicates Boring Locations  
FOUNDATION SOUNDINGS: Foundation design and foundation quantities are based on a study of borings and soil sampling soundings made at the site. This sounding information may be inspected in the office of Bureau of Bridges in Columbus or the Division Office, but the State does not guarantee the accuracy thereof.

A.D.T. 340: 1975



**PROPOSED STRUCTURE**

TYPE: Continuous steel beam with reinforced concrete deck and substructure.  
SPANS: 53.50' - 69.00' - 69.00' - 59.25' - 71.25' - 71.25' - 59.25' - 46.00'.  
ROADWAY: 24'-0" of 2'-2" Safety Curbs  
LOAD FREQUENCY: C.F. 130 (57)  
SKEW: 4° 34'-23" L.F.  
WEARING SURFACE: 2" Monolithic concrete  
APPROACH SLAB: Special Design (25' long)  
ALIGNMENT: Tangent  
SUPERELEVATION: None

MICHAEL BAKER JR., CONSULTING ENGINEERS  
ROCHESTER, PENNSYLVANIA

**SITE PLAN**  
BRIDGE NO. LAK-1-0127  
UNDER EDDY ROAD

LAKE COUNTY  
SCALE 1" = 30'  
STA. 67+24.25

PRESENT	TOPOGRAPHY	PROPOSED	WORK
Surveyed	Drawn	Designed	Checked
M.B.Jr.	A.C.M.	G.S.M.	H.C.M.
			Reviewed
			7.6.7
			12-30-58

58-2-123