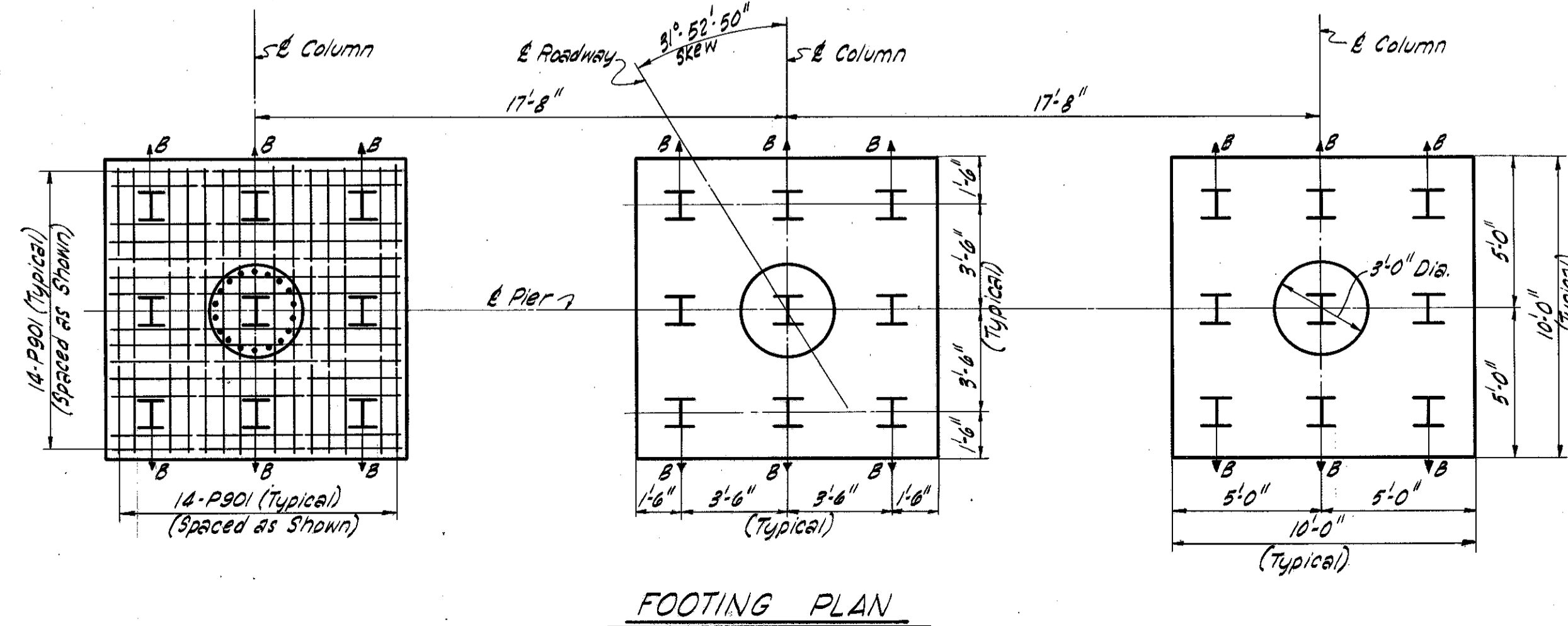
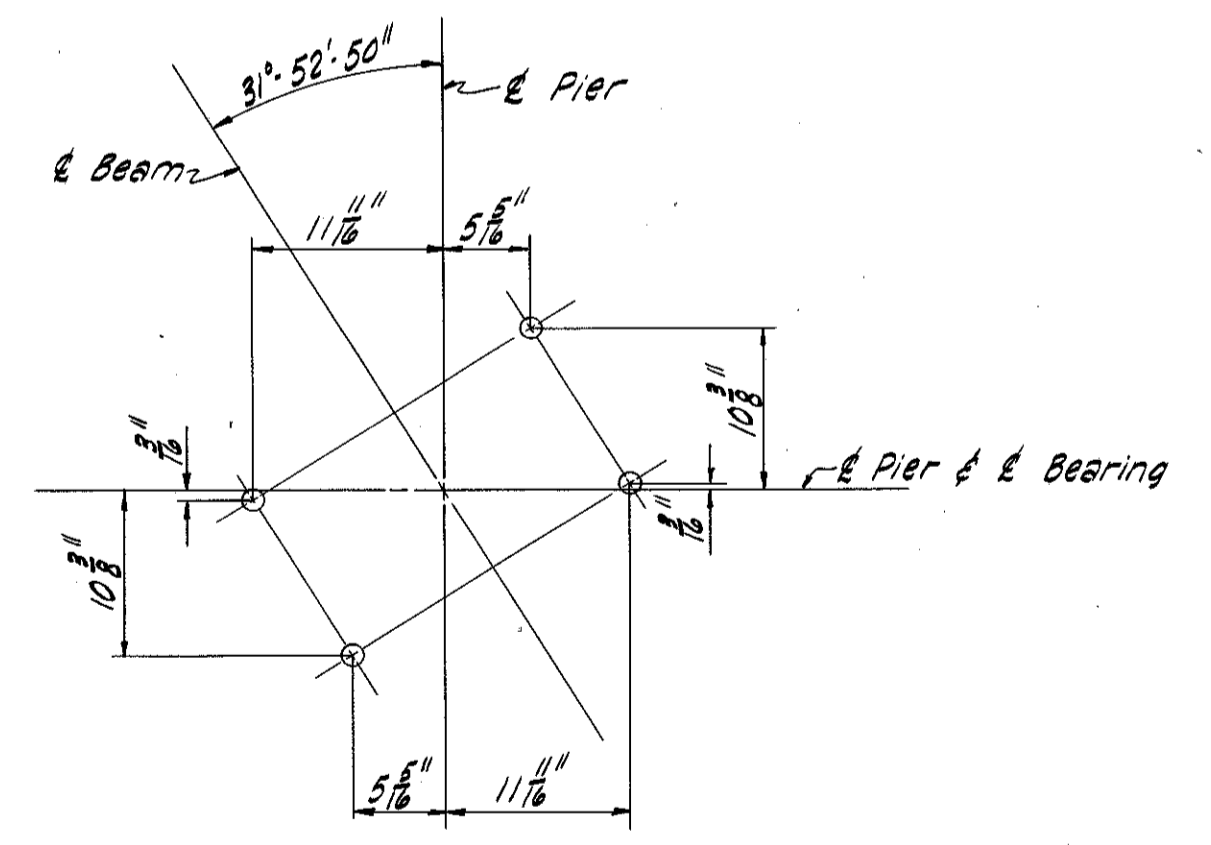
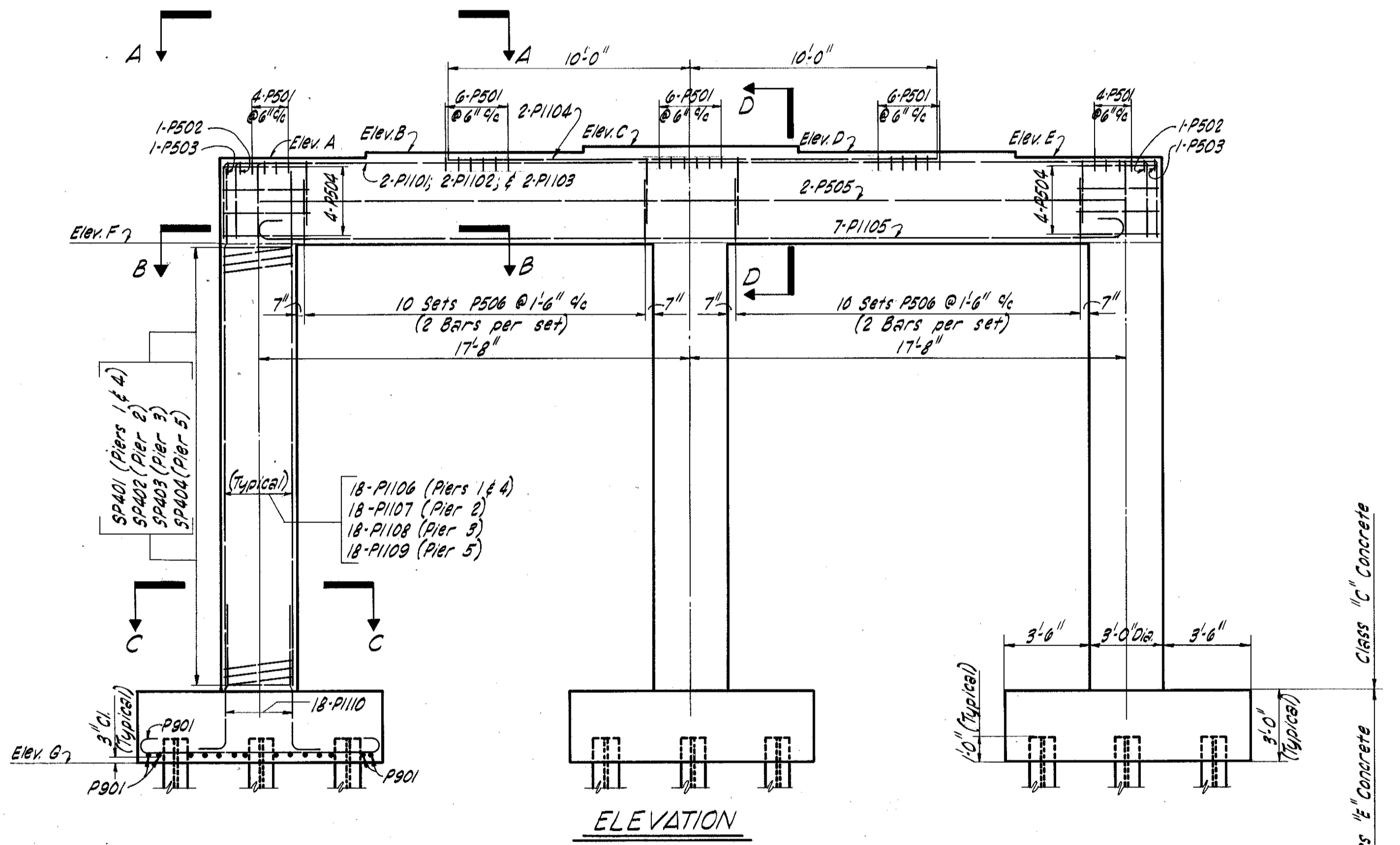
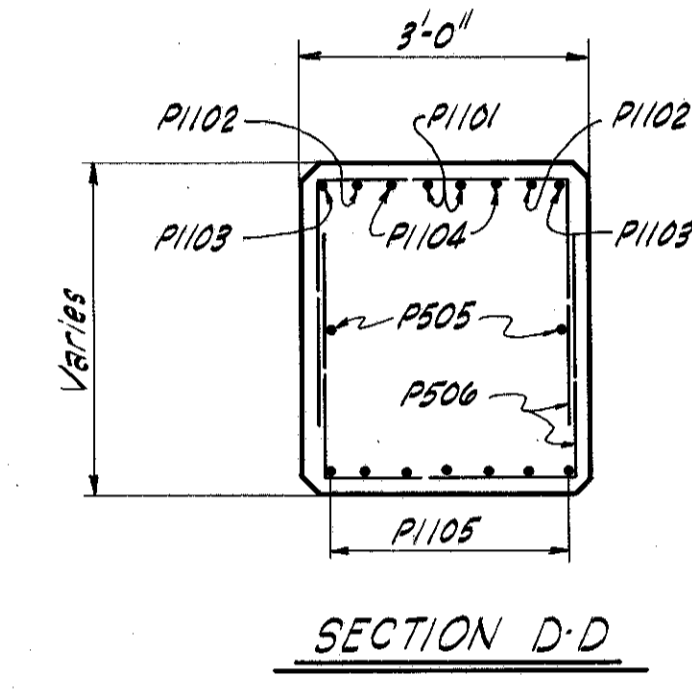
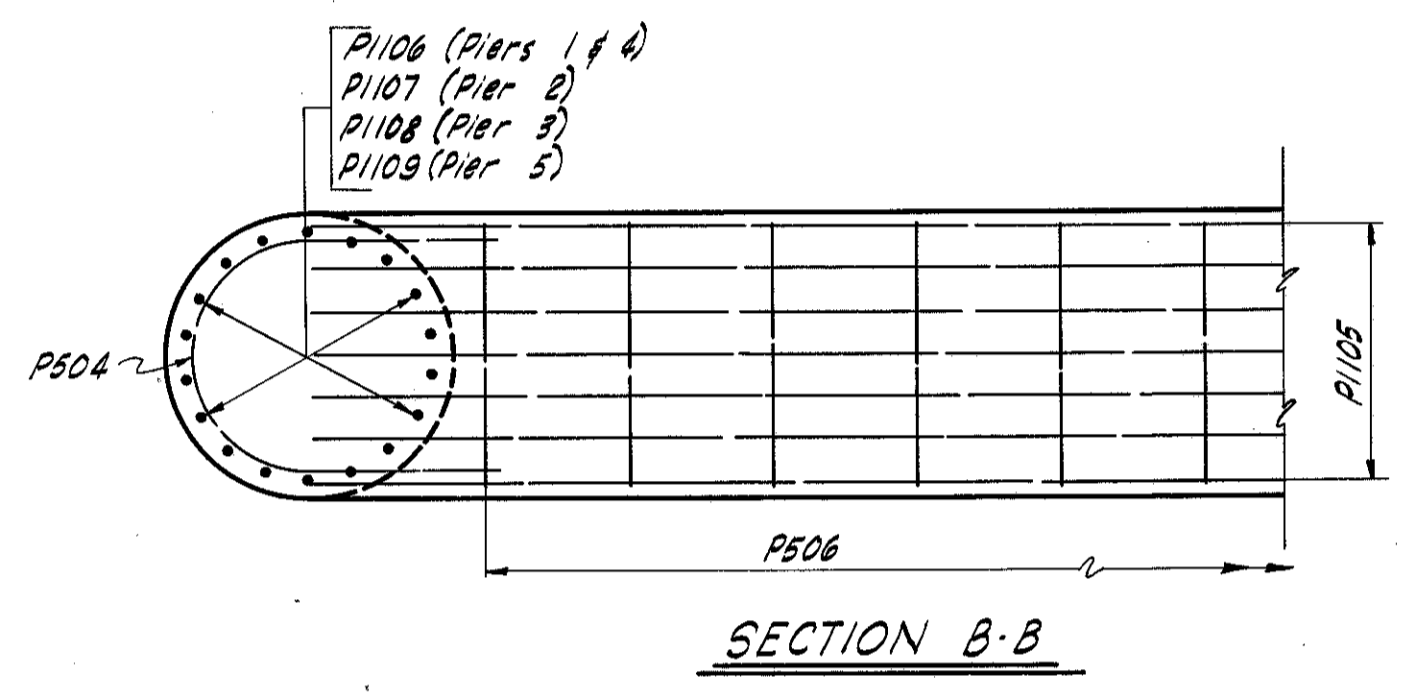
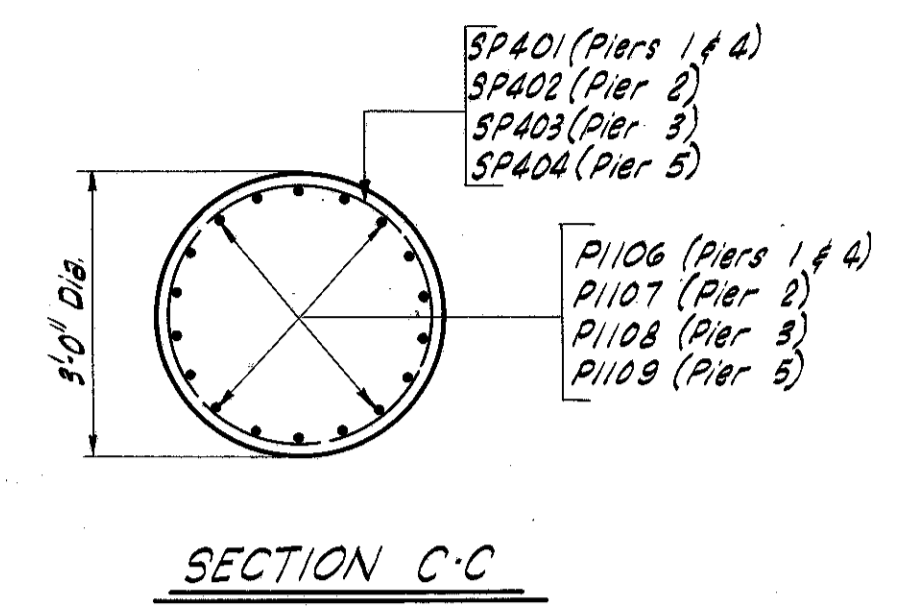
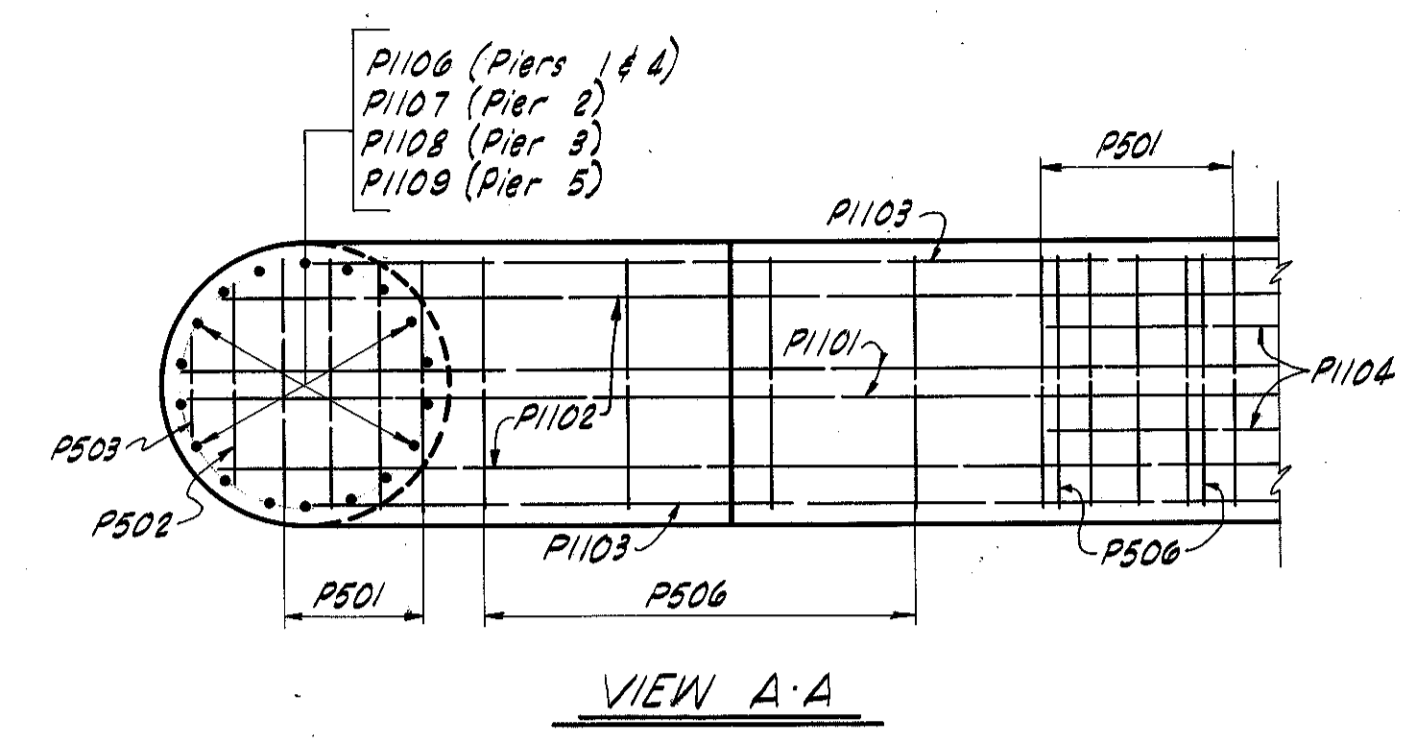
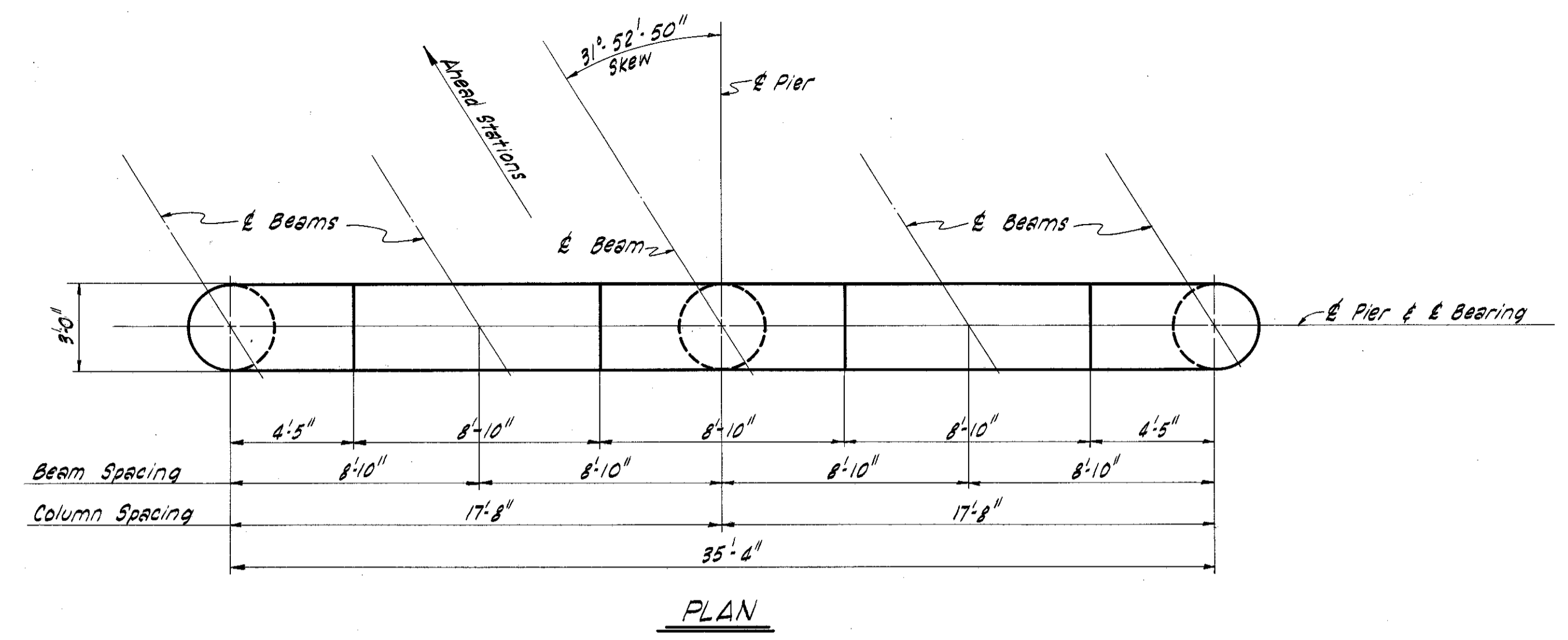


CUYAHOGA & LAKE COUNTIES
CUY-1-15.91
LAK-1-0.00

NOTE: The downward leg of P1101, P1102, P1103 & P1104 bars to be placed in periphery of vertical column bars.



NOTE: Piles marked "B" are battered 2:12 in the direction indicated, for Pier No. 3 only. All other piles are plumb.

NOTES

Special care shall be taken in placing reinforcing steel in the beam seat so that it will not interfere with the drilling of anchor bolt holes.

All piles to be 12 BP 53 and shall be driven to a bearing capacity as given in the general notes on the "General Plan and Elevation."

TABLE OF ELEVATIONS

	A	B	C	D	E	F	G
Pier No. 1	879.33	879.48	879.63	879.54	879.45	875.83	857.75
Pier No. 2	878.51	878.67	878.84	878.77	878.70	875.01	858.25
Pier No. 3	877.50	877.68	877.86	877.81	877.75	874.00	854.00
Pier No. 4	876.17	876.36	876.56	876.52	876.48	872.66	854.50
Pier No. 5	874.36	874.58	874.79	874.77	874.75	870.86	853.75

MICHAEL BAKER JR., CONSULTING ENGINEERS
ROCHESTER, PENNSYLVANIA

PIERS
BRIDGE NO. LAK-1-0106
UNDER CHARDON ROAD

LAKE COUNTY STA. 55+15.53

Designed	Drawn	Traced	Checked	Reviewed-Date	Revised
G.M.W.	B.H.B.	B.H.B.	D.E.B.	H.G.H. 10-19-59	4-19-60

59-B-197