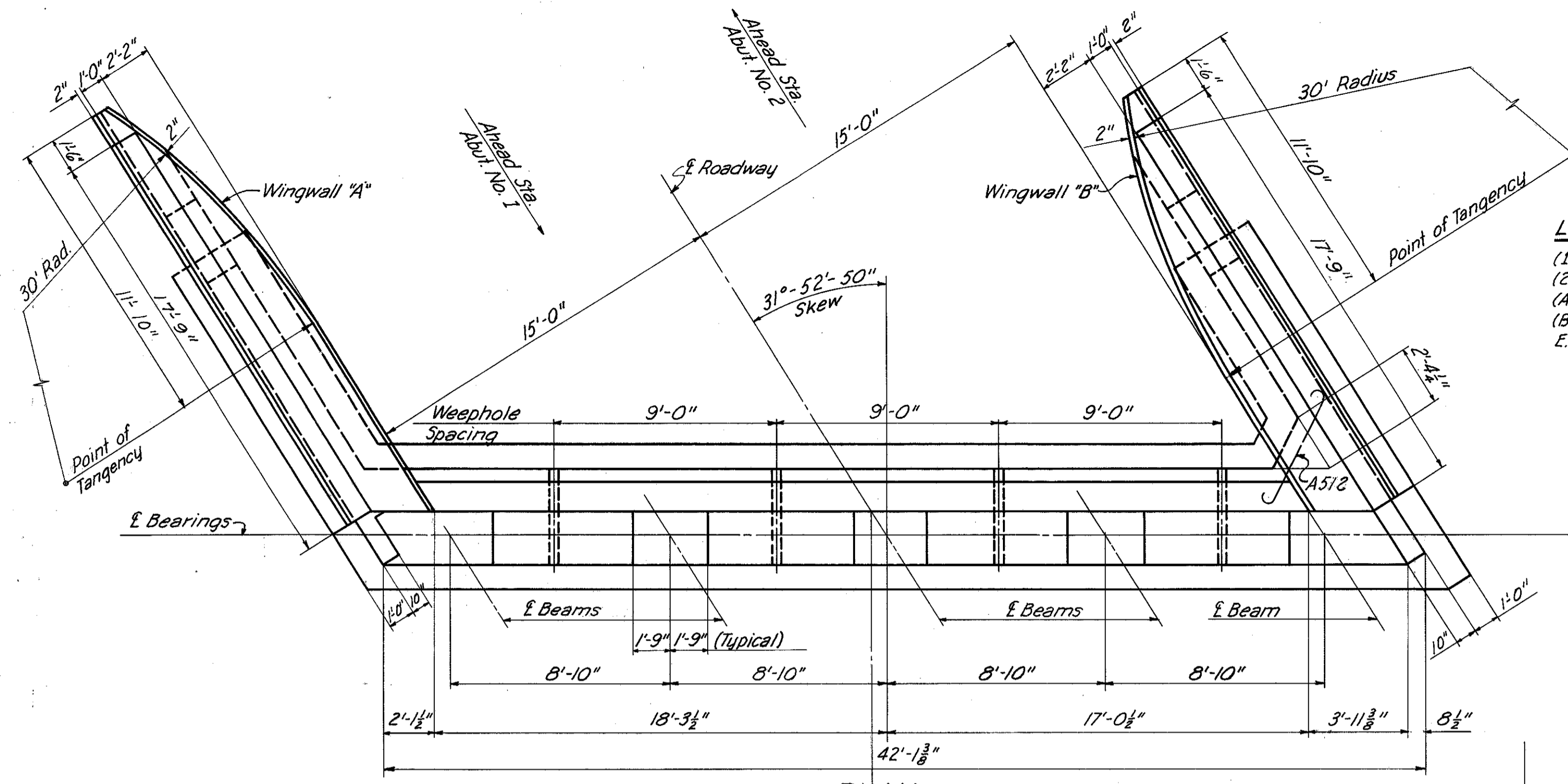


MICROFILMED
SEP 6 1965

FED. RD. DIVISION	STATE	PROJECT	TYPE FUNDS
2	OHIO	I-1103(18)	

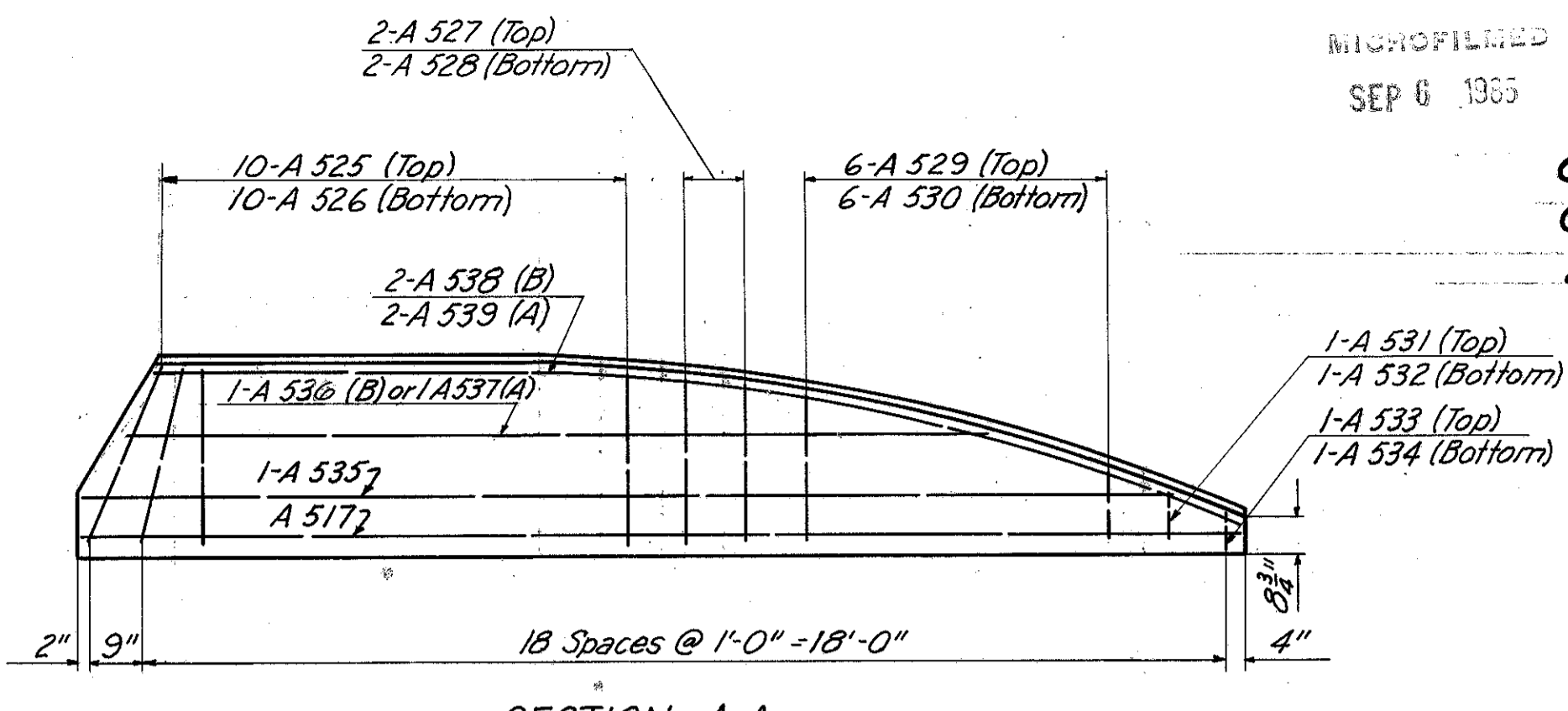
387
458

CUYAHOGA & LAKE COUNTIES
CUY-1-15.91
LAK-1-0.00

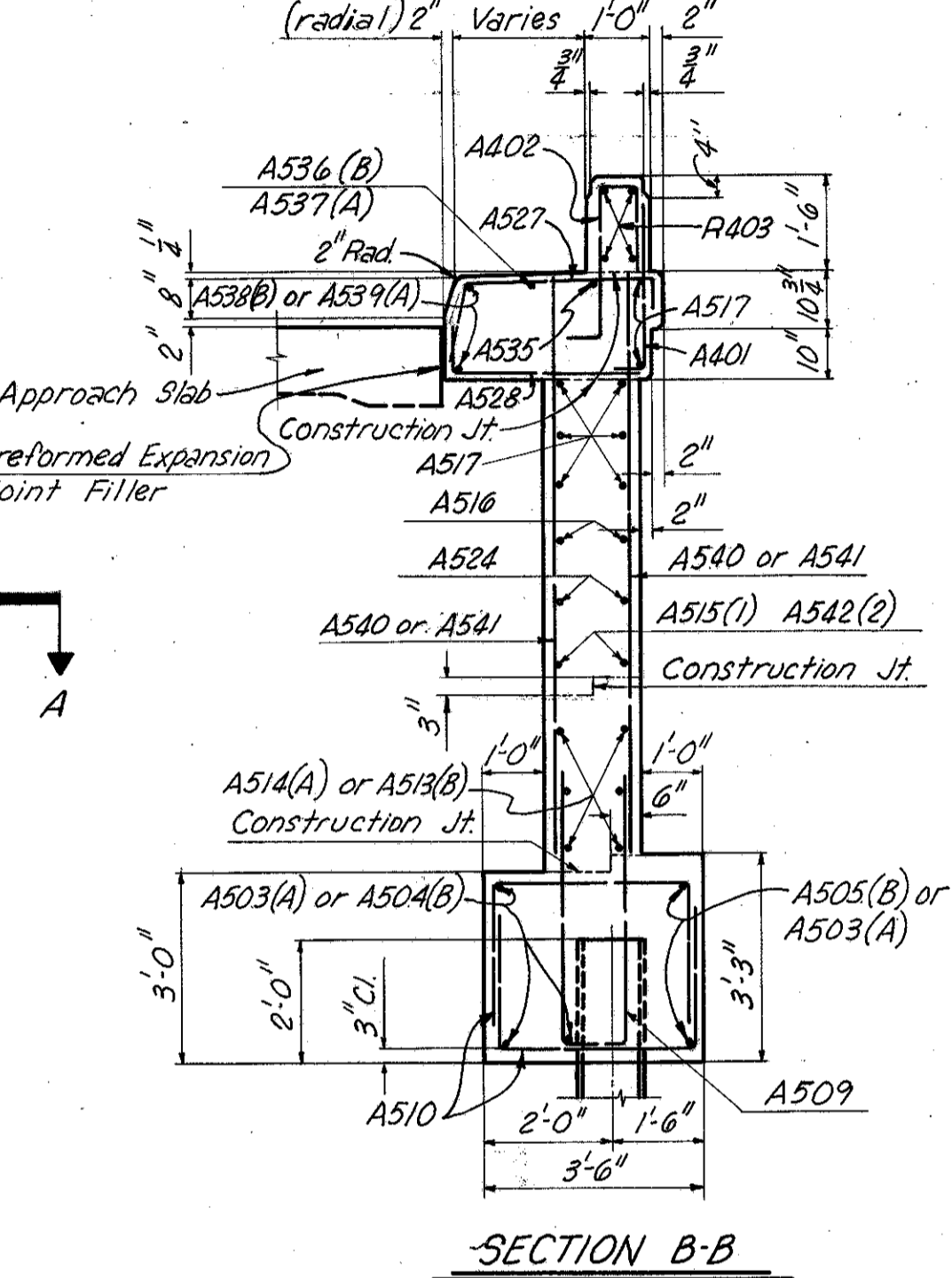


PLAN

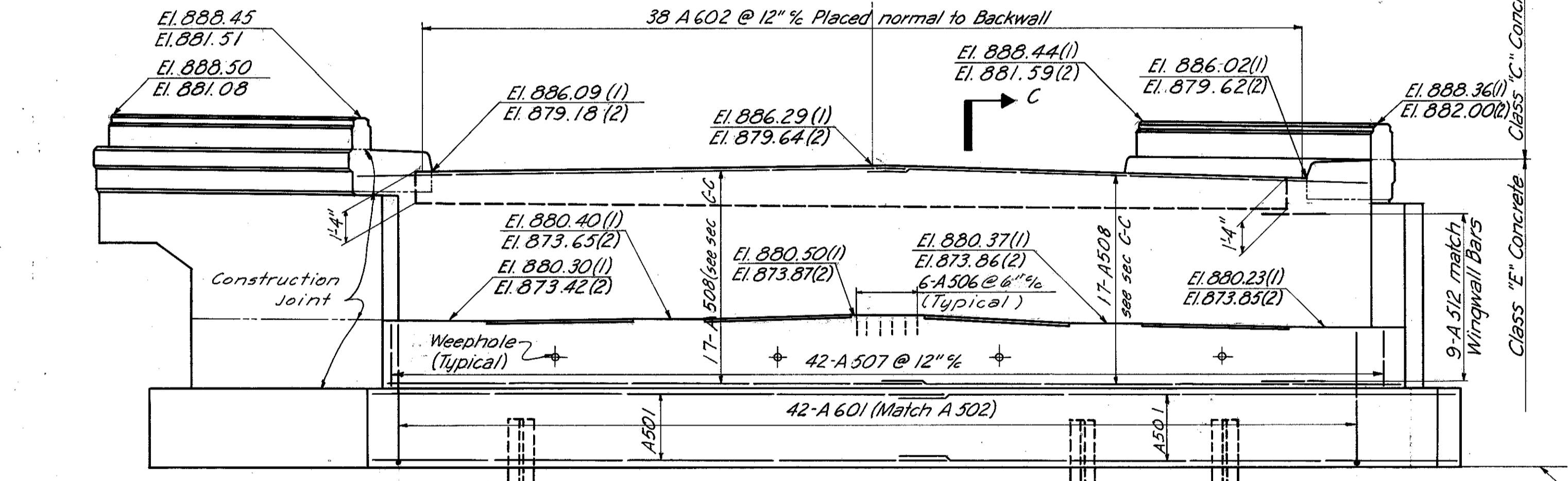
LEGEND
(1) Indicates Abut. 1
(2) Indicates Abut. 2
(A) Indicates Wingwall "A"
(B) Indicates Wingwall "B"
E.F. Indicates Each Face



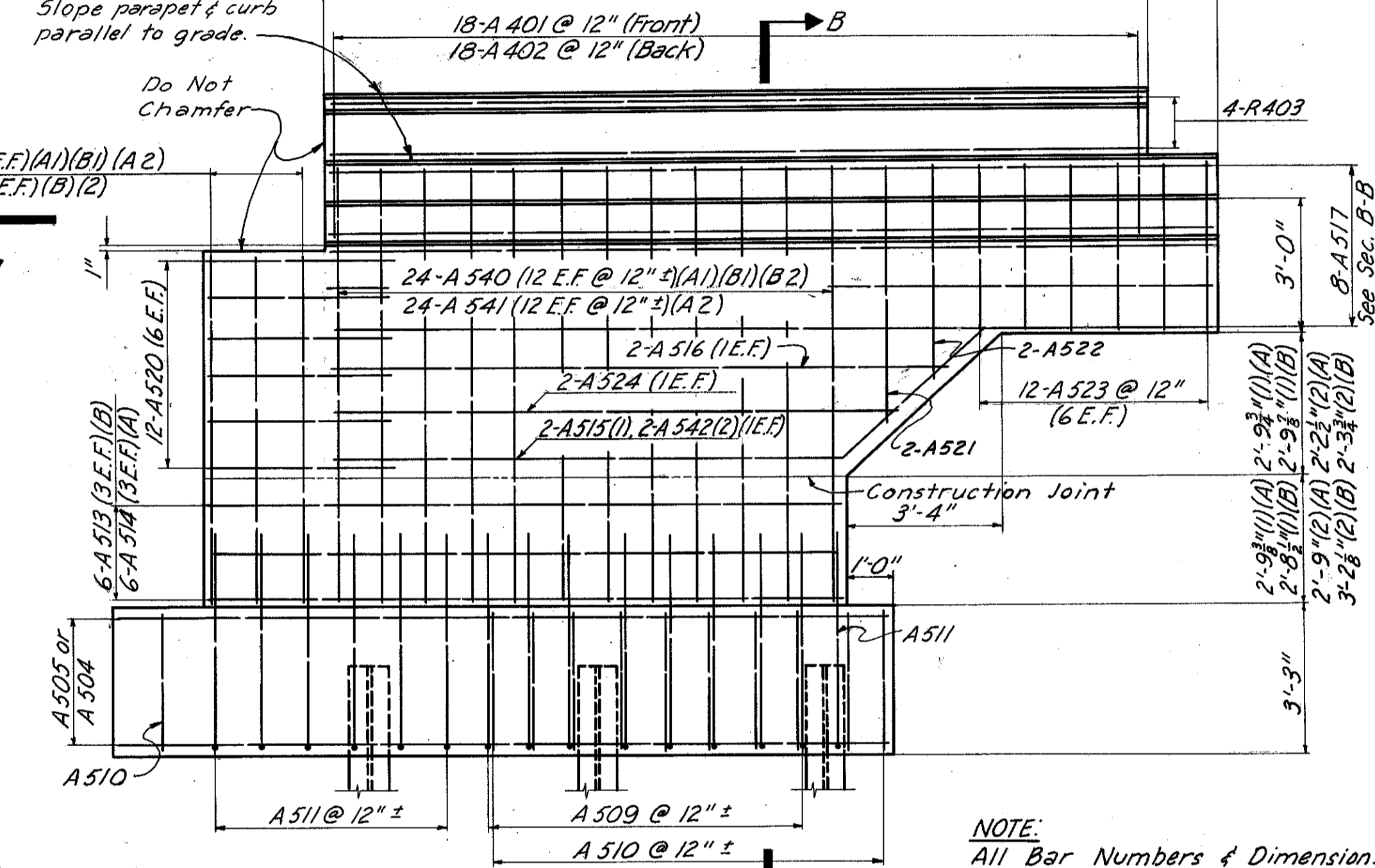
SECTION A-A



SECTION B-B



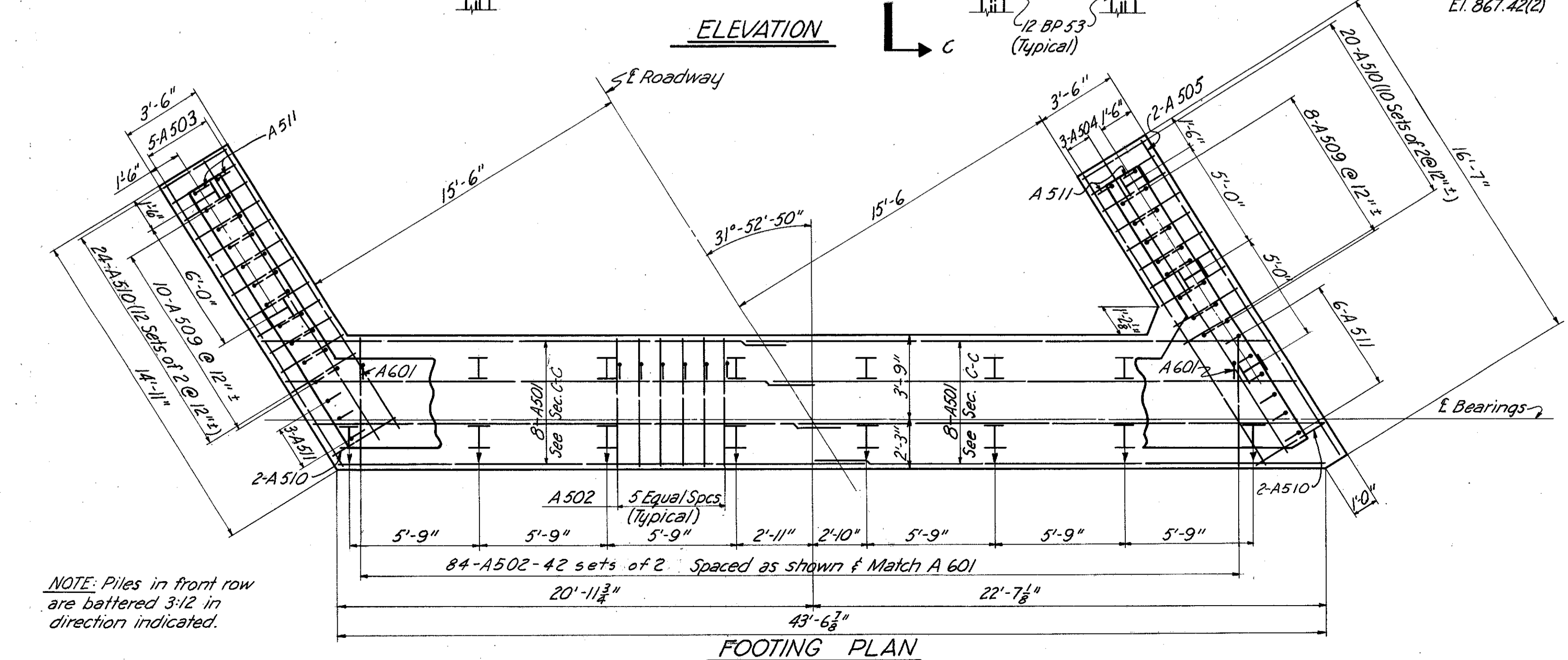
ELEVATION



WINGWALL ELEVATION

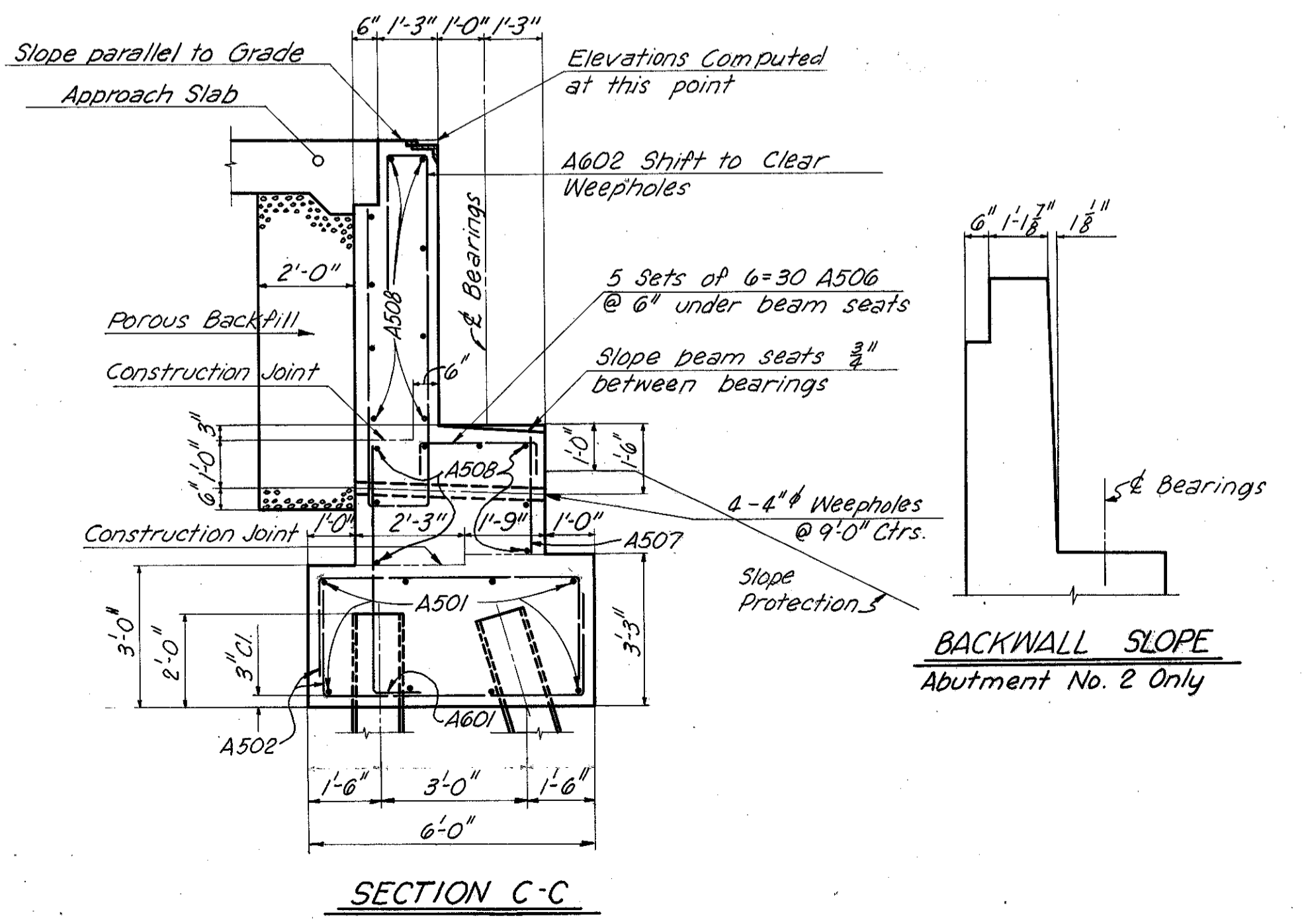
NOTE:
All Bar Numbers & Dimensions are for both abutments unless otherwise noted.

- NOTES**
- Porous backfill 2 feet thick full length of abutment shall extend up to the underside of the approach slab.
 - All abutment concrete shall be class "E".
 - Concrete and reinforcing steel above parapet construction joints included with railing for payment.
 - All piles to be 12 BP53 and shall be driven to a bearing capacity as given in the general notes on the "General Plan & Elevation".
 - For guard rail detail and railing post spacing see "General Plan & Elevation".



FOOTING PLAN

NOTE: Piles in front row are battered 3:12 in direction indicated.



SECTION C-C

BACKWALL SLOPE
Abutment No. 2 Only

MICHAEL BAKER JR., CONSULTING ENGINEERS
ROCHESTER, PENNSYLVANIA

ABUTMENTS
BRIDGE NO. LAK-1-0106
UNDER CHARDON ROAD

LAKE COUNTY STA. 55+15.53

Designed	Drawn	Traced	Checked	Reviewed-Date	Revised
G.S.W.	A.C.M.	F.E.H.	G.S.W.	H.G.H. 10-10-59	4-19-60
		B. B.			

Sheet 3 of 8

59-B-169