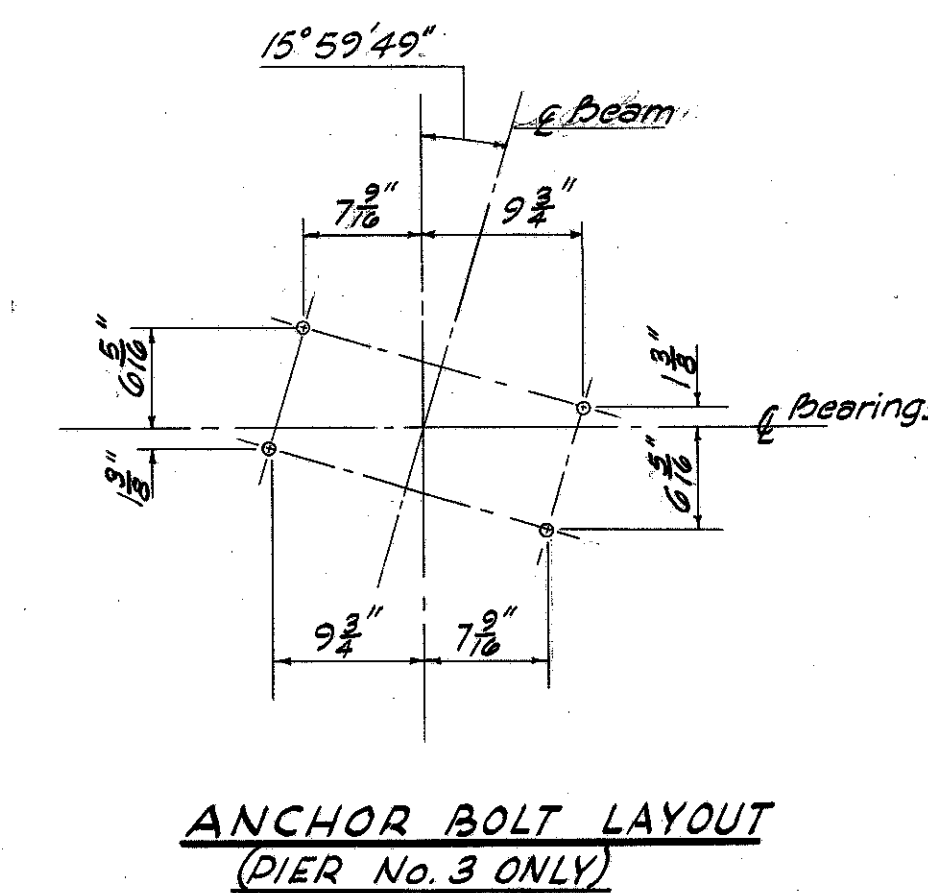
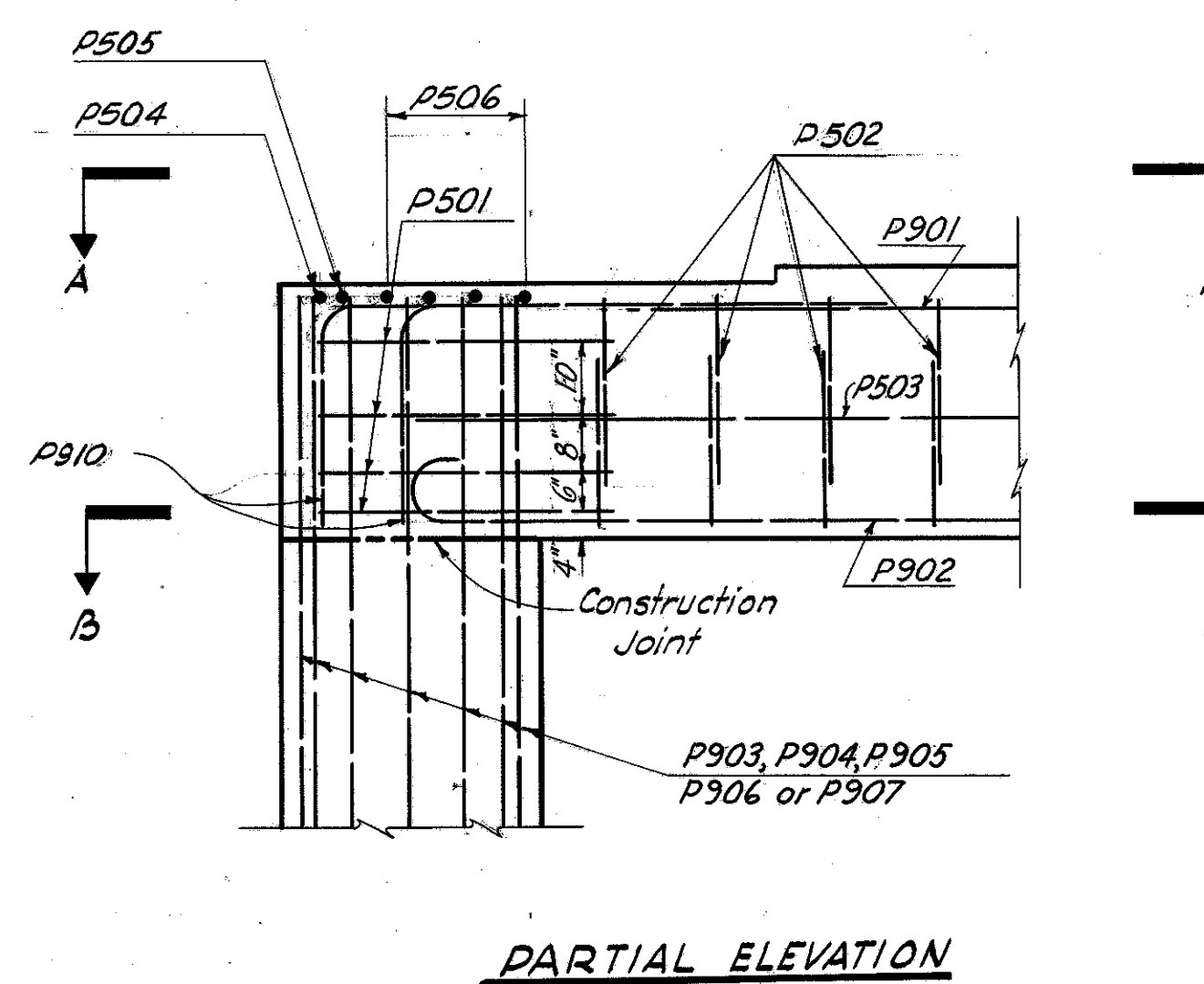
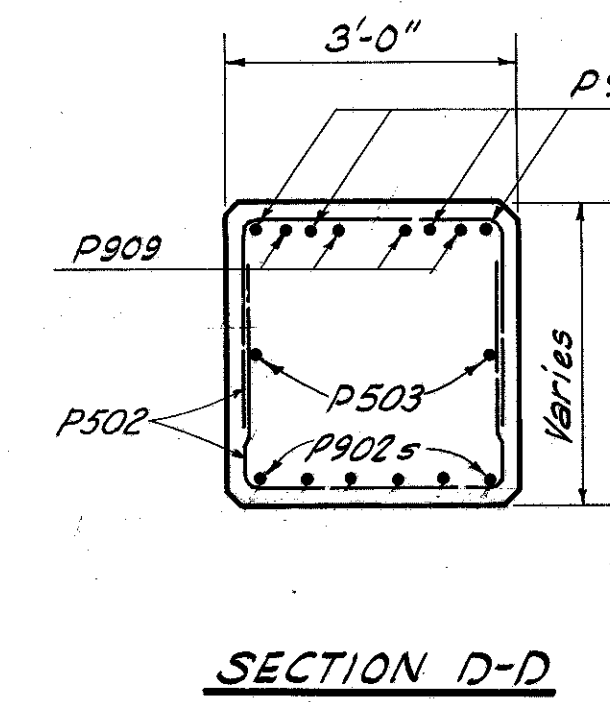
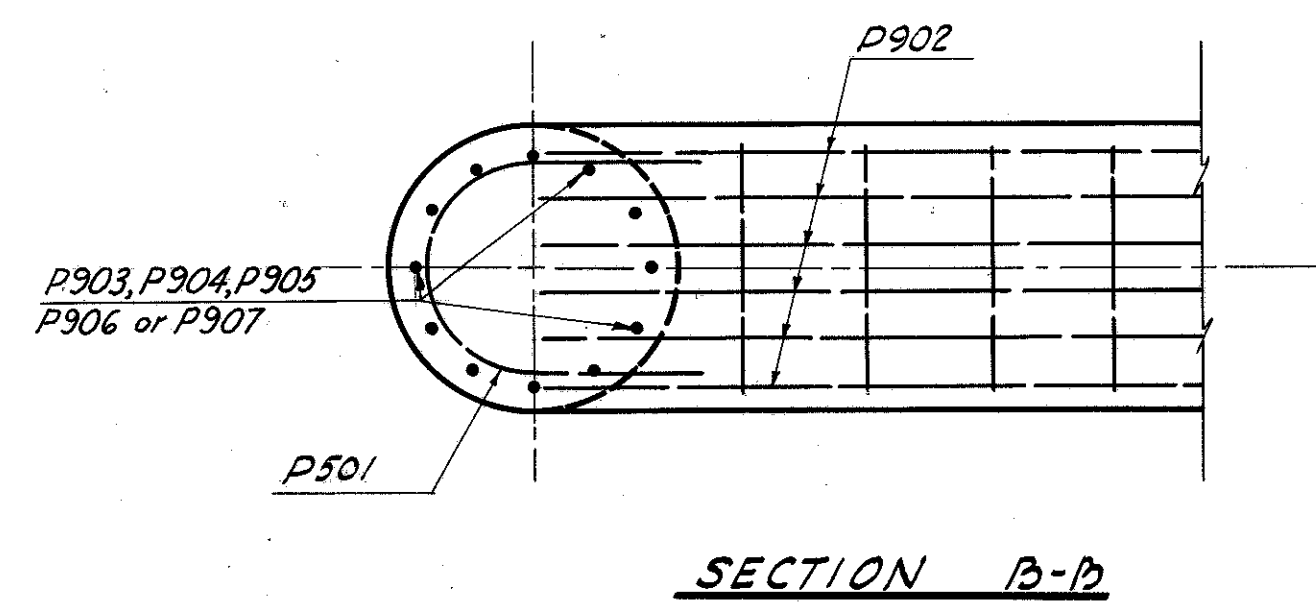
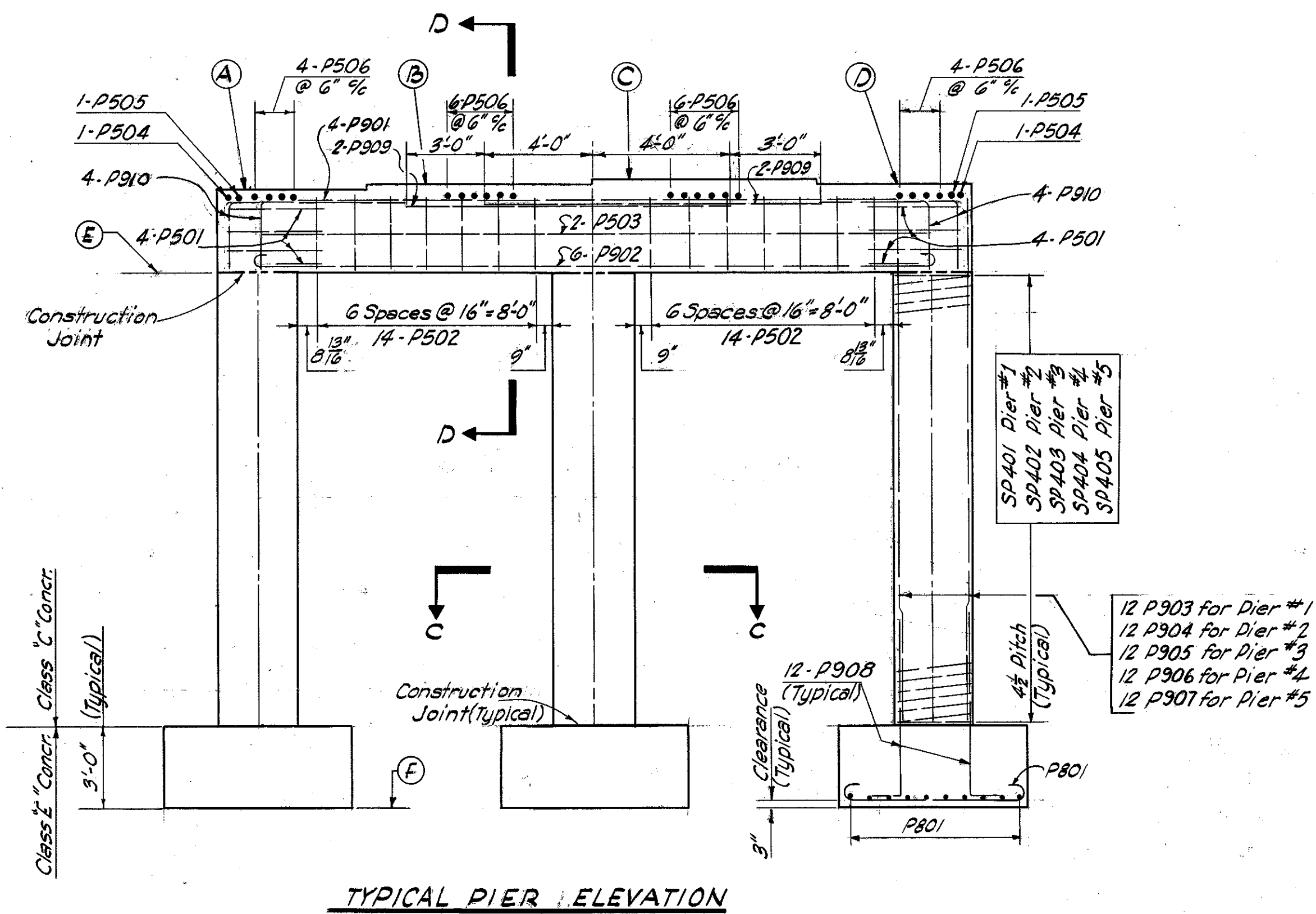
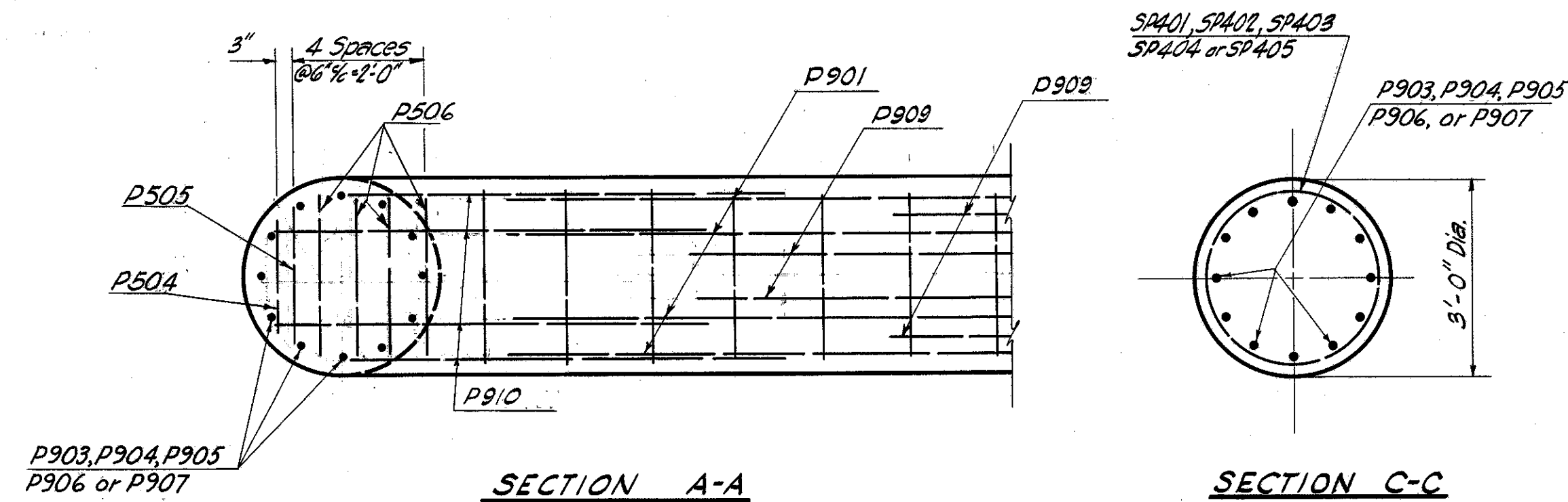
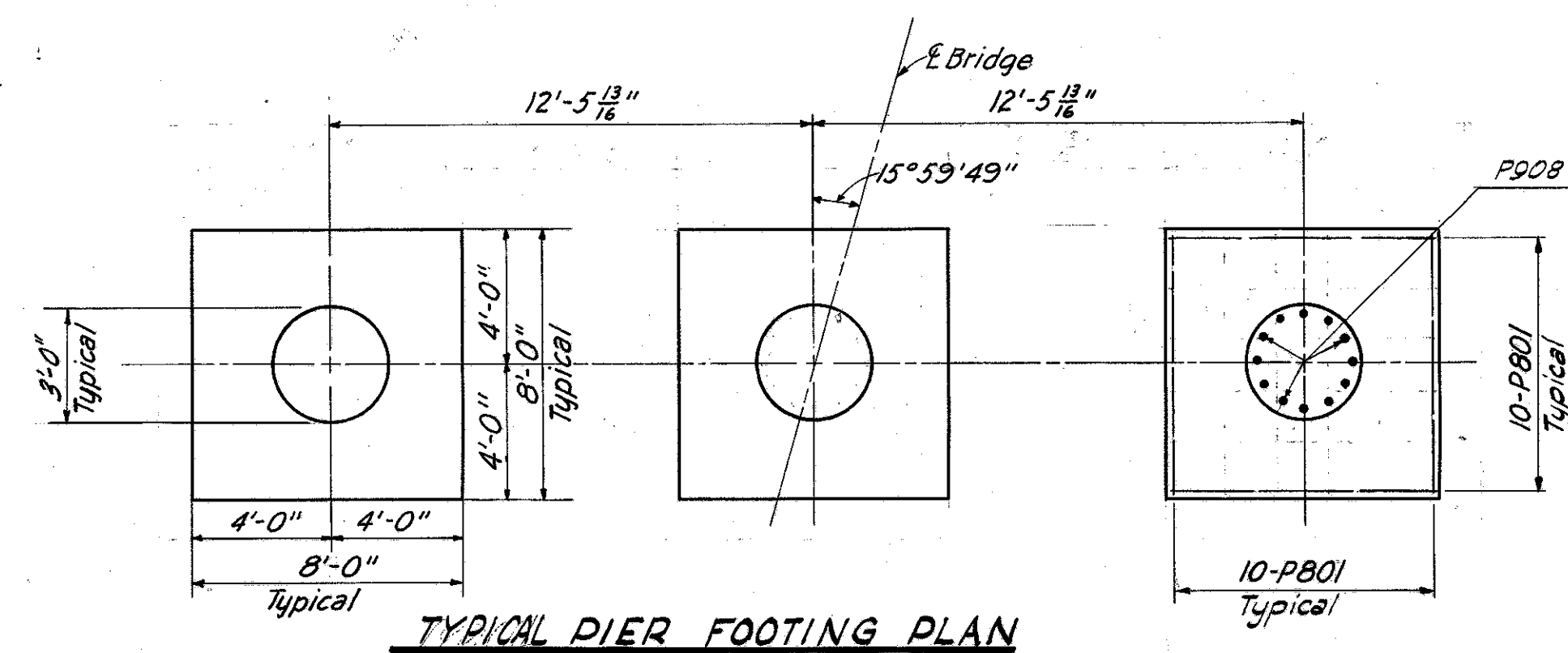


The downward leg of P910 bars to be placed in the periphery of vertical column bars.



- Special care shall be taken in placing reinforcing steel in the bridge seat so that it will not interfere with the drilling of anchor bolt holes.
- Design foundation pressure is 5 Tons per sq. ft.



	A	B	C	D	E	F
Pier No. 1	901.64	901.81	901.85	901.77	898.64	880.00
Pier No. 2	902.63	902.83	902.85	902.75	899.68	879.00
Pier No. 3	903.05	903.18	903.18	903.05	900.25	879.40
Pier No. 4	902.75	902.85	902.85	902.68	899.68	878.70
Pier No. 5	901.77	901.85	901.81	901.64	898.64	880.30

MICHAEL BAKER JR., CONSULTING ENGINEERS  
ROCHESTER, PENNSYLVANIA

PIERS  
BRIDGE NO. LAK-1-0002  
UNDER WHITE ROAD

LAKE CO.		STA. 1+21.89			
Designed	Drawn	Traced	Checked	Reviewed-Date	Revised
G.S.W.	S	S	J.K.W.	HGH: 12-30-58	1-19-60