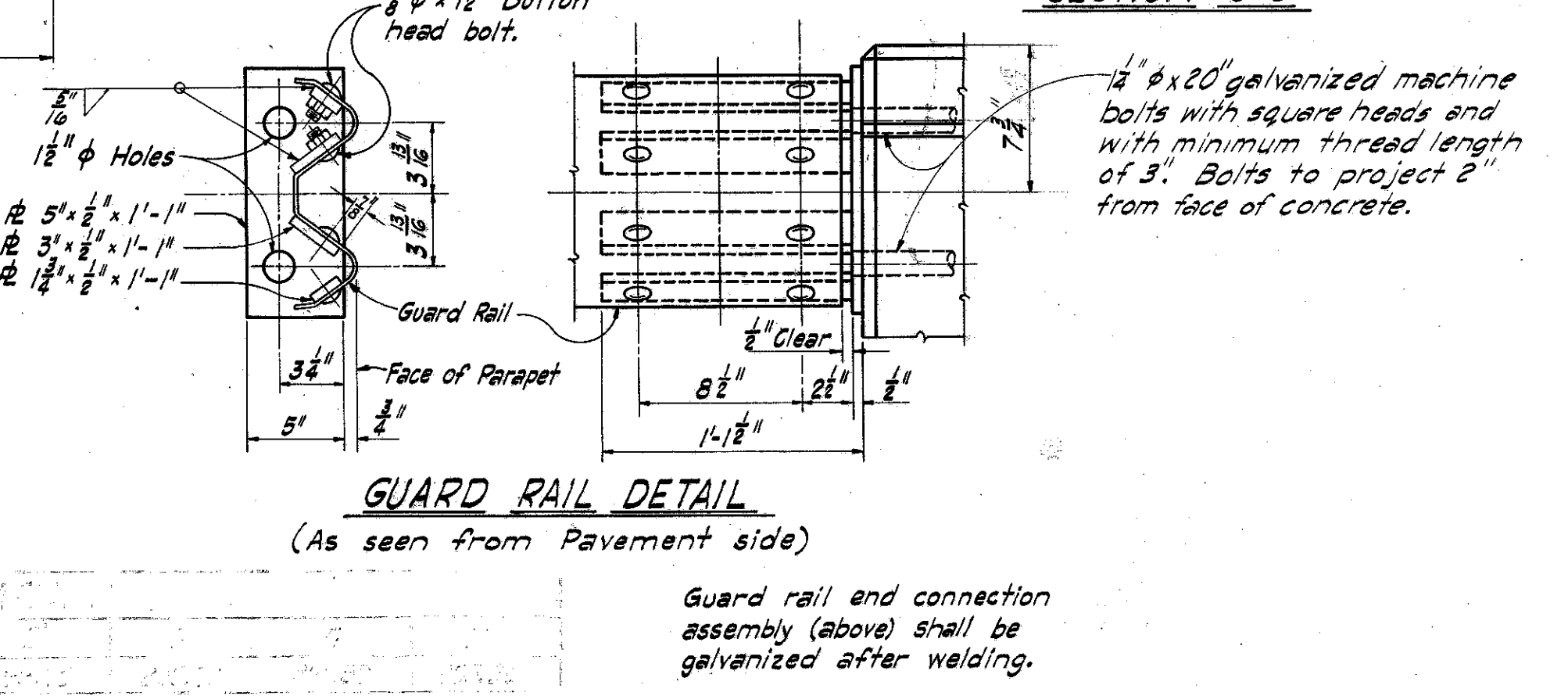
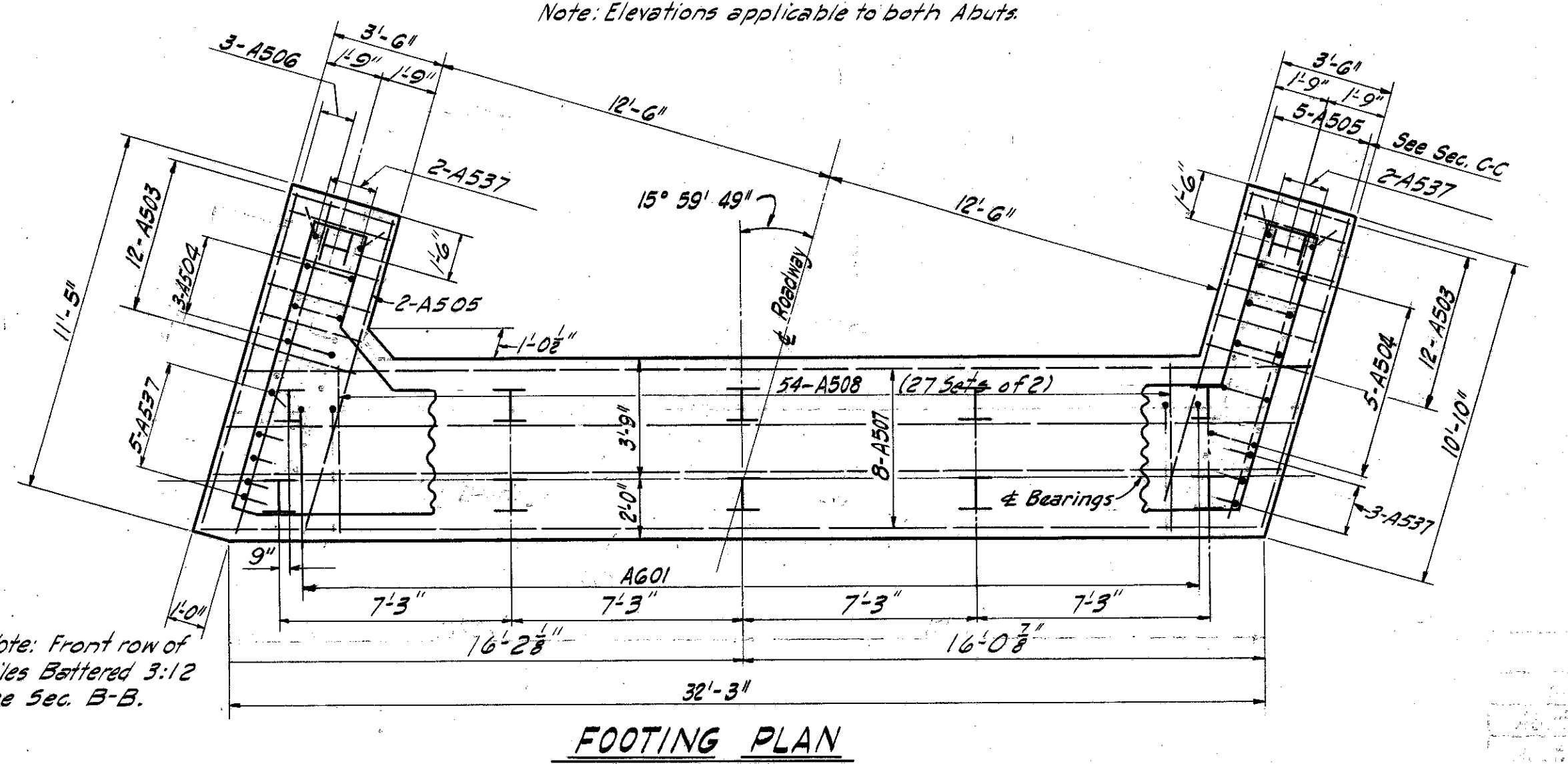


- ### NOTES
- Porous backfill 2 feet thick full length of abutment shall extend up to the underside of the approach slab.
  - For Piling notes see General Plan and Elevation.
  - Railing not shown, see General Plan and Elevation for railing post spacing.
  - Concrete and reinforcing steel above parapet construction joints included with railing for payment.
  - Procedure: The embankment shall be placed and compacted to subgrade elevation, after which excavation shall be made for the abutment.
  - All abutment concrete shall be Class "E"
  - Guard rail end connection to be included with railing for payment.



MICHAEL BAKER JR., CONSULTING ENGINEERS ROCHESTER, PENNSYLVANIA					
<b>ABUTMENTS</b> BRIDGE NO. LAK-I-0002 UNDER WHITE ROAD					
LAKE CO.			STA. 1+21.89		
Designed	Drawn	Traced	Checked	Reviewed-Date	Revised
G.S.W.	J.M.B.	B.C.W.	J.V.W.	H.G.H.-12-30-58	4-12-60