

CUY-271-14.09
LAK-271-0.00

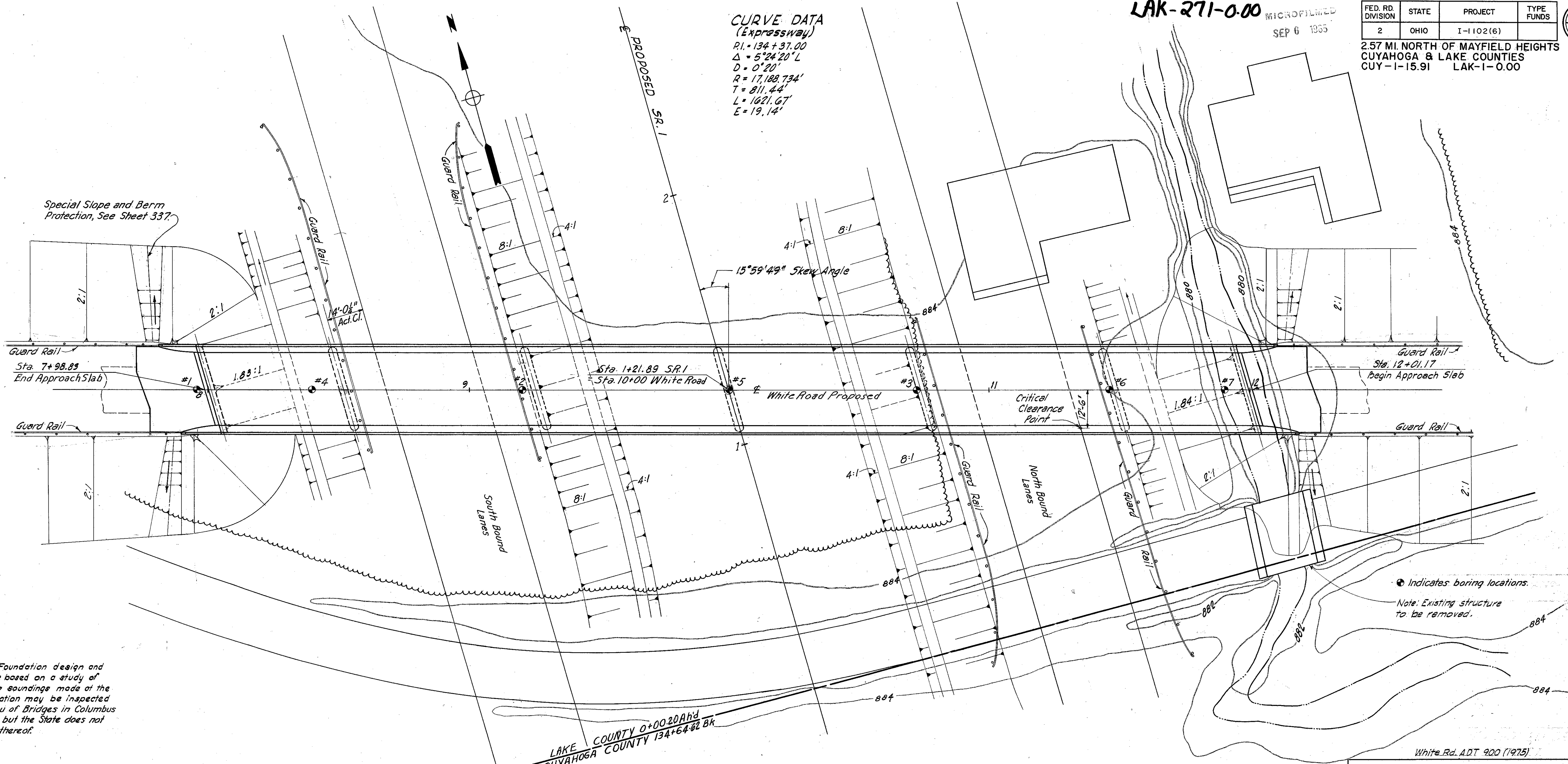
MICROFILMED
SEP 6 1965

FED. RD. DIVISION	STATE	PROJECT	TYPE FUNDS
2	OHIO	I-1102(6)	

379
458

2.57 MI. NORTH OF MAYFIELD HEIGHTS
CUYAHOGA & LAKE COUNTIES
CUY-1-15.91 LAK-1-0.00

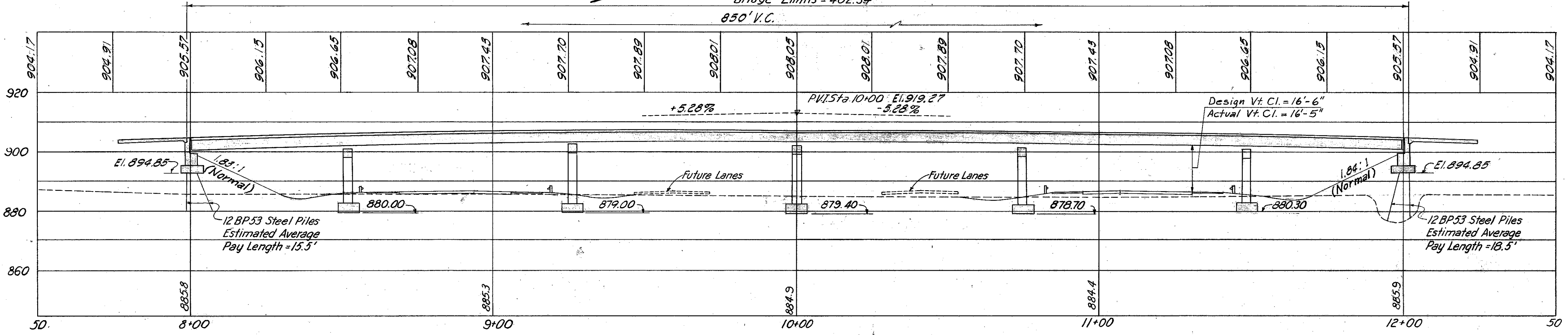
CURVE DATA
(Expressway)
R1 = 134 + 37.00
 $\Delta = 5^{\circ}24'20''$ L
D = 0'20"
R = 17,188.734'
T = 811.44'
L = 1021.67'
E = 19.14'



Foundation Soundings: Foundation design and foundation quantities are based on a study of borings and soil sampling soundings made at the site. This sounding information may be inspected in the office of the Bureau of Bridges in Columbus or in the Division office, but the State does not guarantee the accuracy thereof.

LAKE COUNTY 0+00.20 Ahd
CUYAHOGA COUNTY 134+64.82 Bk

Bridge Limits = 402.34'
850' V.C.



CENTER LINE PROFILE OF PROPOSED WHITE ROAD

PROPOSED STRUCTURE
Type: Continuous Steel Beams with reinf. Concrete Deck and Substructure.
Spans: 51'-0", 73'-11", 73'-11", 73'-11", 73'-11", 51'-0" 9/16 Berge
Roadway: 24'-4" 2'-2" Safety Curbs
Load Frequency: CF 130 (37)
Wearing Surface: 3" mono. concr.
Approach Slab: Special Design (25' long)
Skew: 15°59'49" R.F.
Alignment: Tangent

MICHAEL BAKER, JR., CONSULTING ENGINEERS
ROCHESTER, PENNSYLVANIA

SITE PLAN
BRIDGE NO. LAK-1-0002
UNDER WHITE ROAD

LAKE CO.
SCALE: 1" = 20' STA. 1+21.89

PRESENT	TOPOGRAPHY	PROPOSED	WORK
Surveyed M.B. Jr.	Drawn J.M.B.	Designed G.S.W.	Drawn J.M.B. Checked J.W. Reviewed H.G.H. 12-30-59