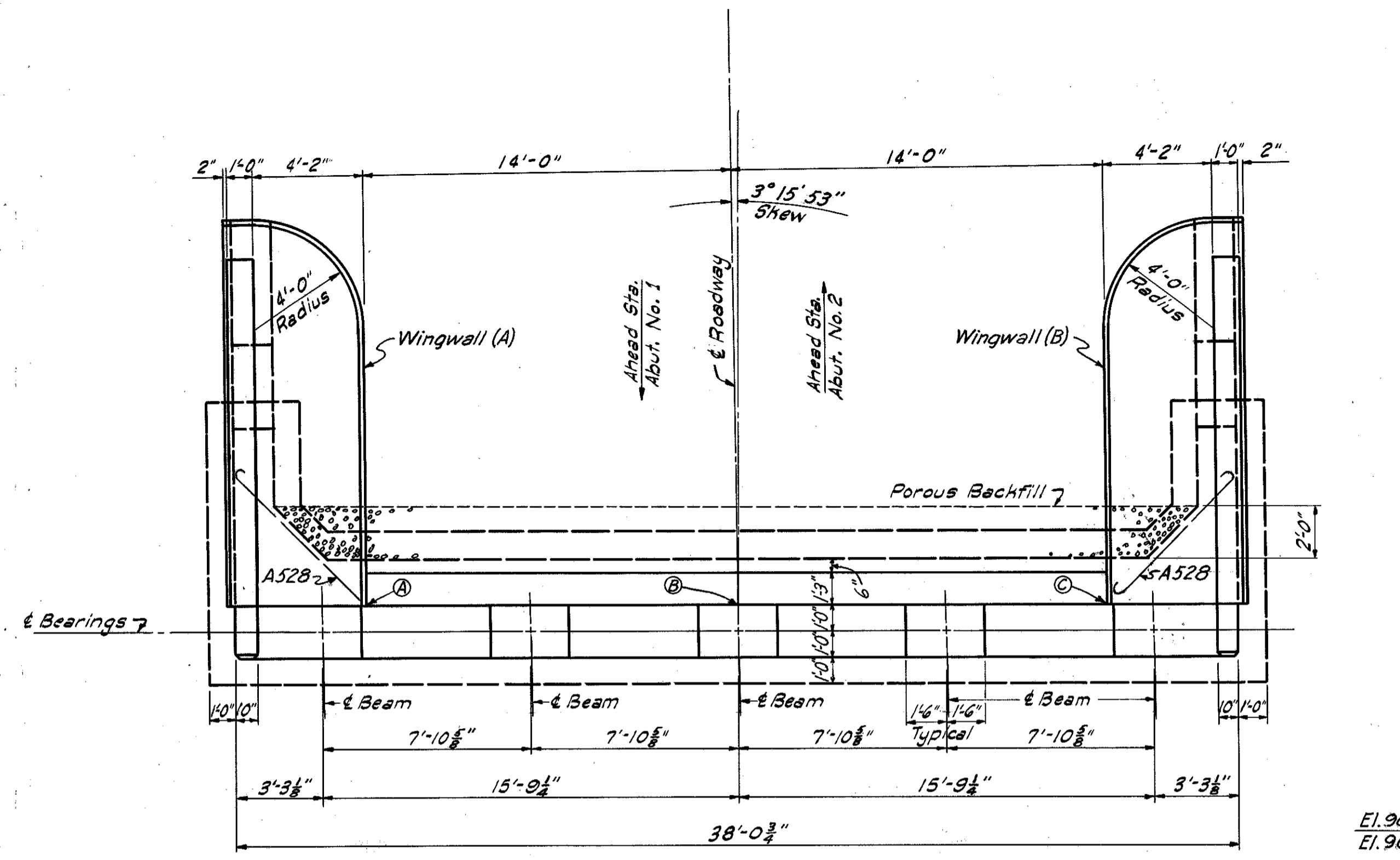


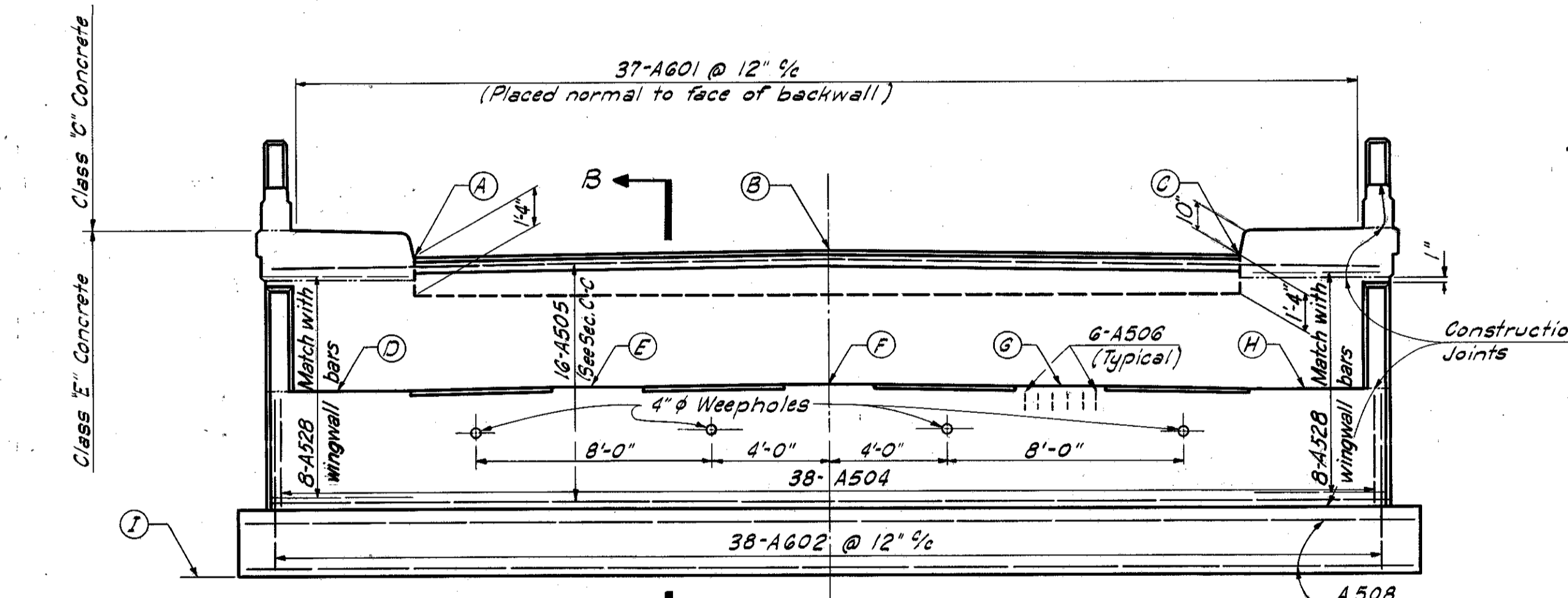
MICROFILMED  
SEP 6 1965

FED. RD. DIVISION	STATE	PROJECT	TYPE FUNDS
2	OHIO	I-1102(6)	375 458

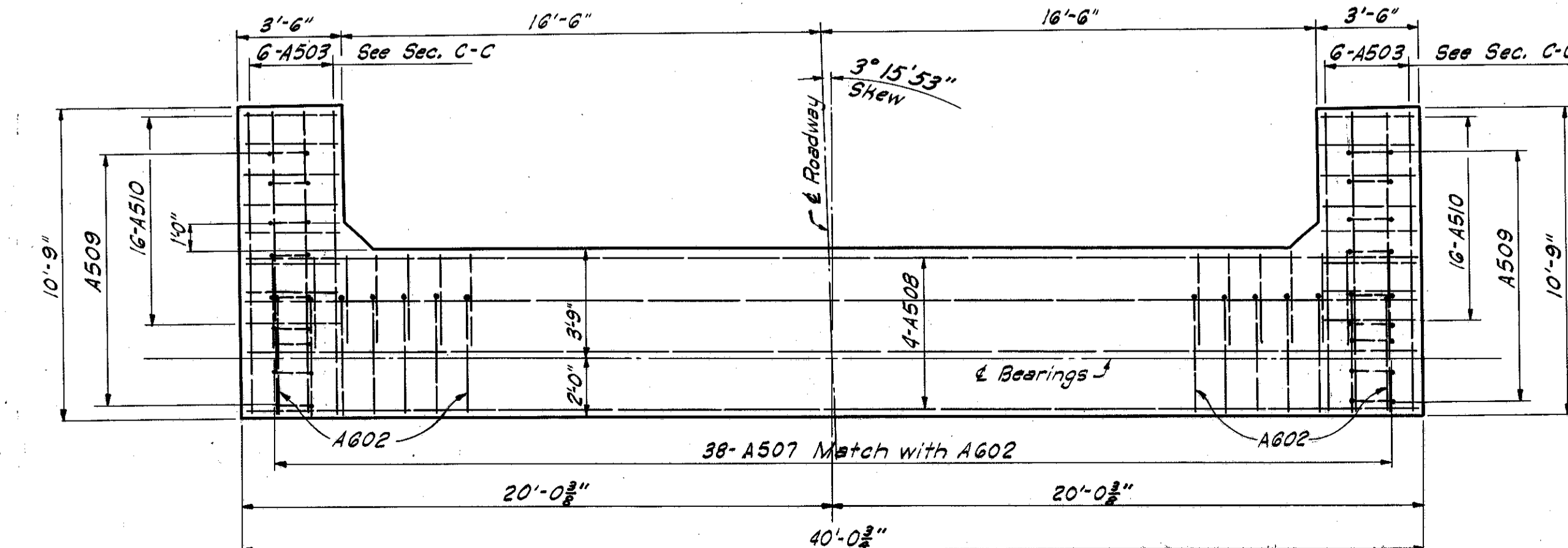
CUYAHOGA & LAKE COUNTIES  
CUY-1-15.91  
LAK-1-0.00



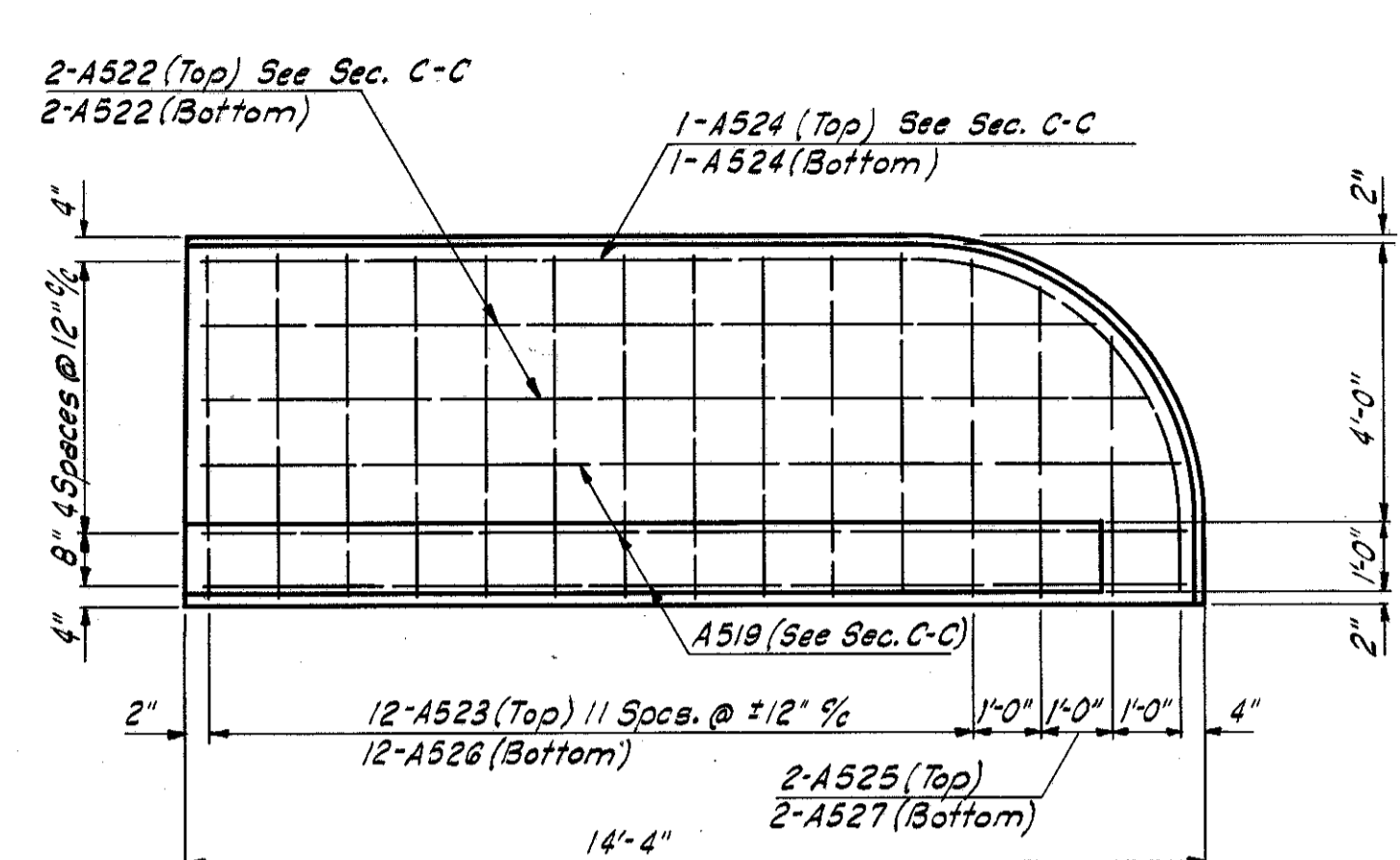
ABUTMENT PLAN



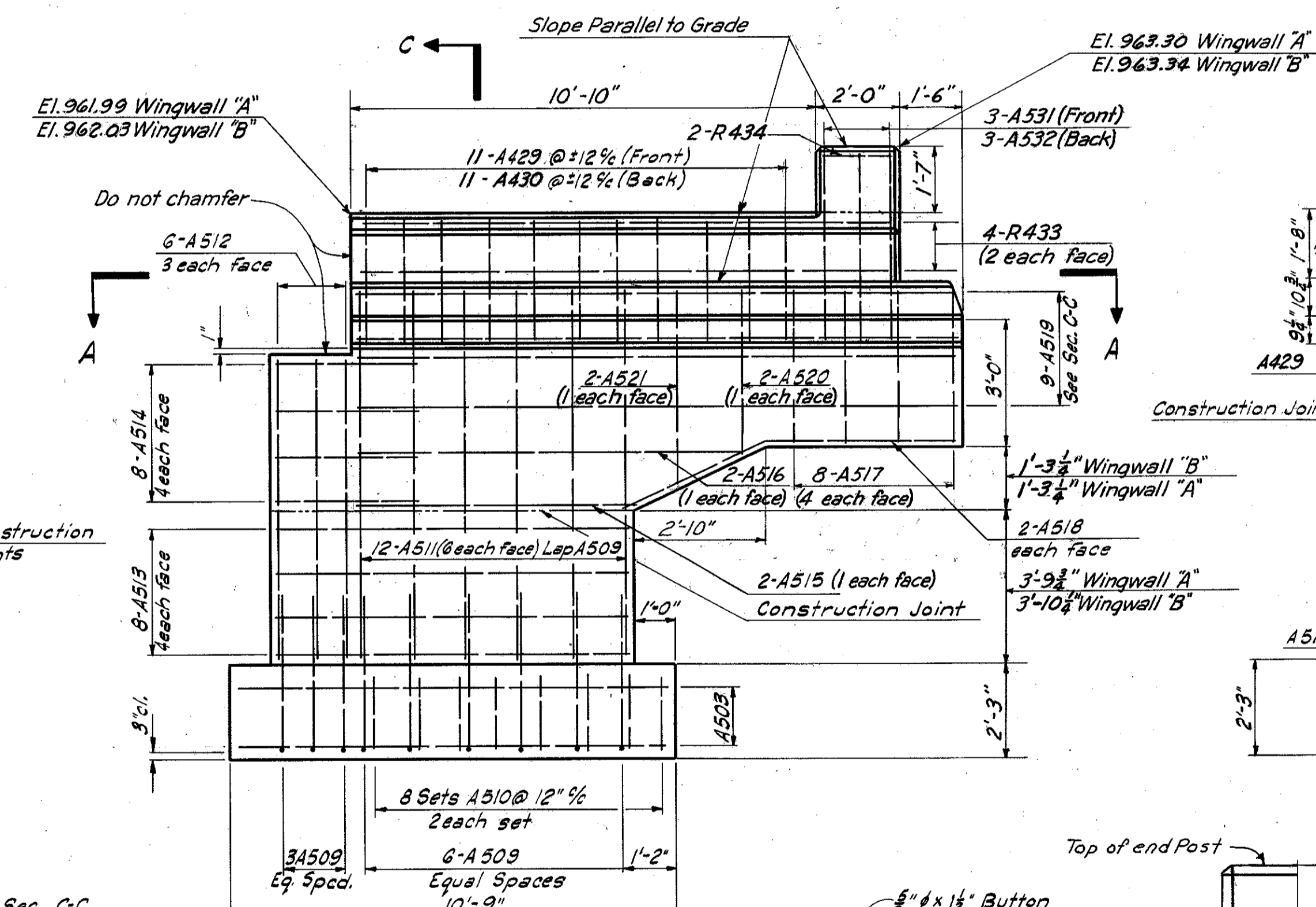
ABUTMENT ELEVATION



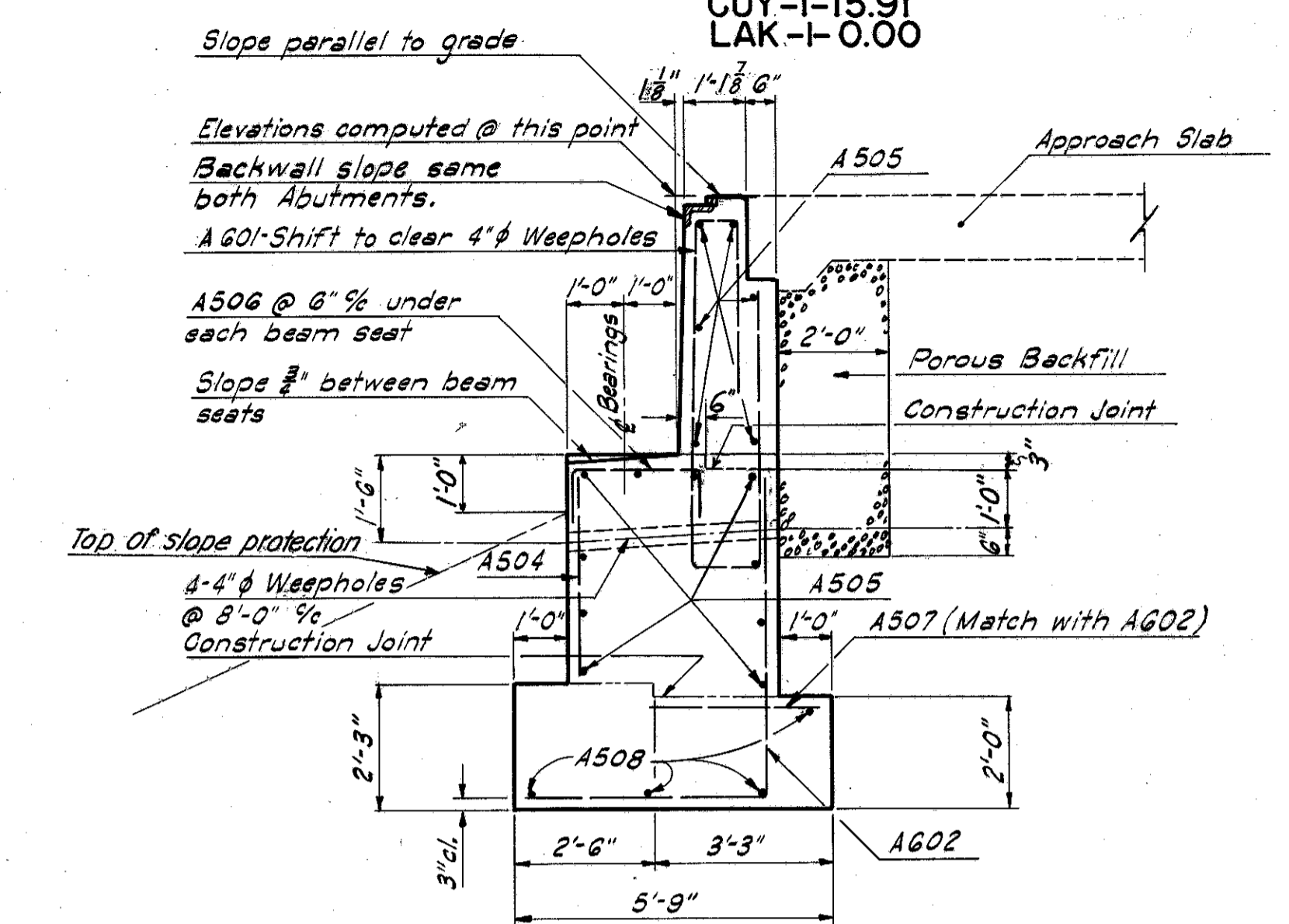
FOOTING PLAN



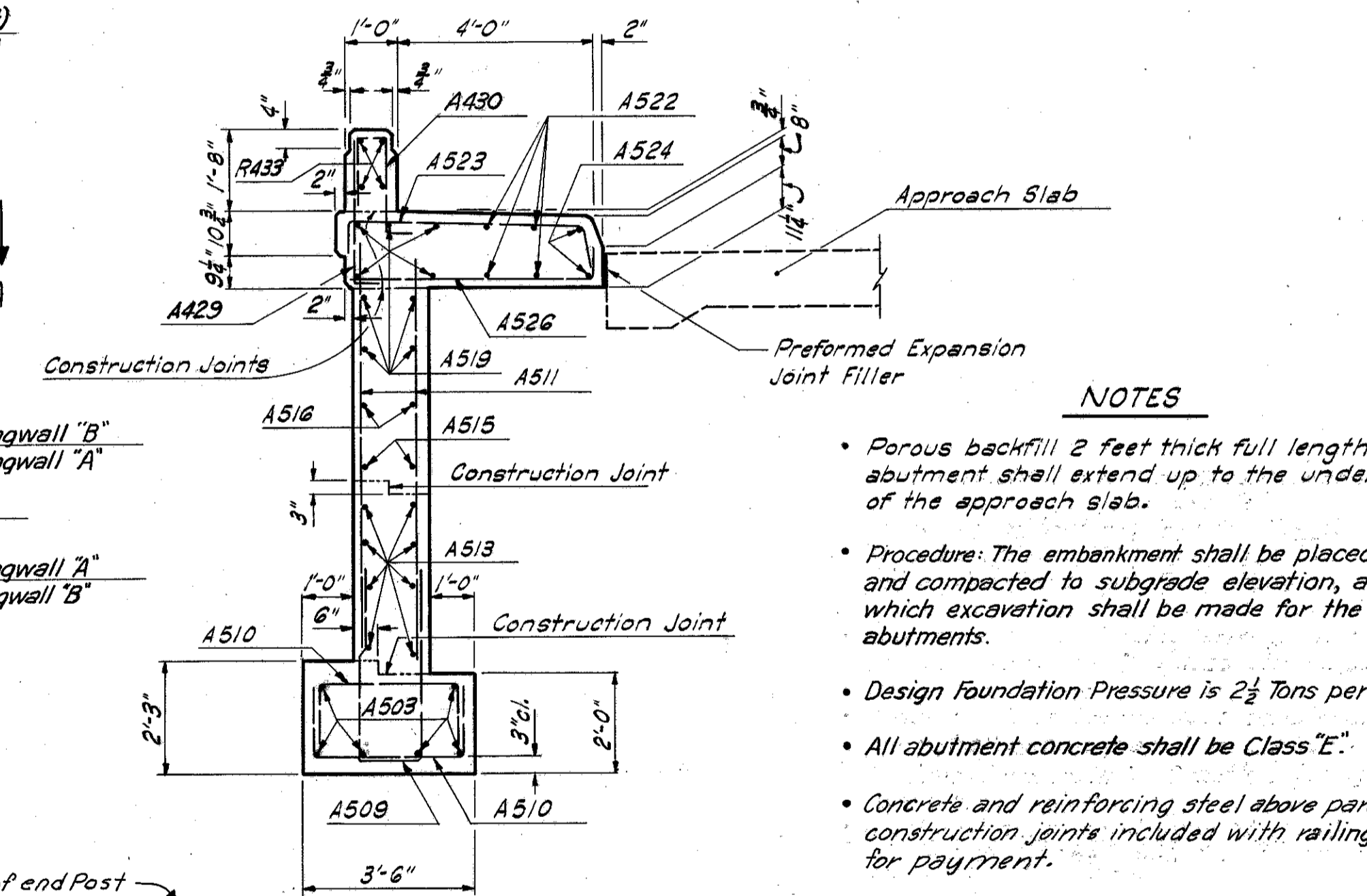
SECTION A-A



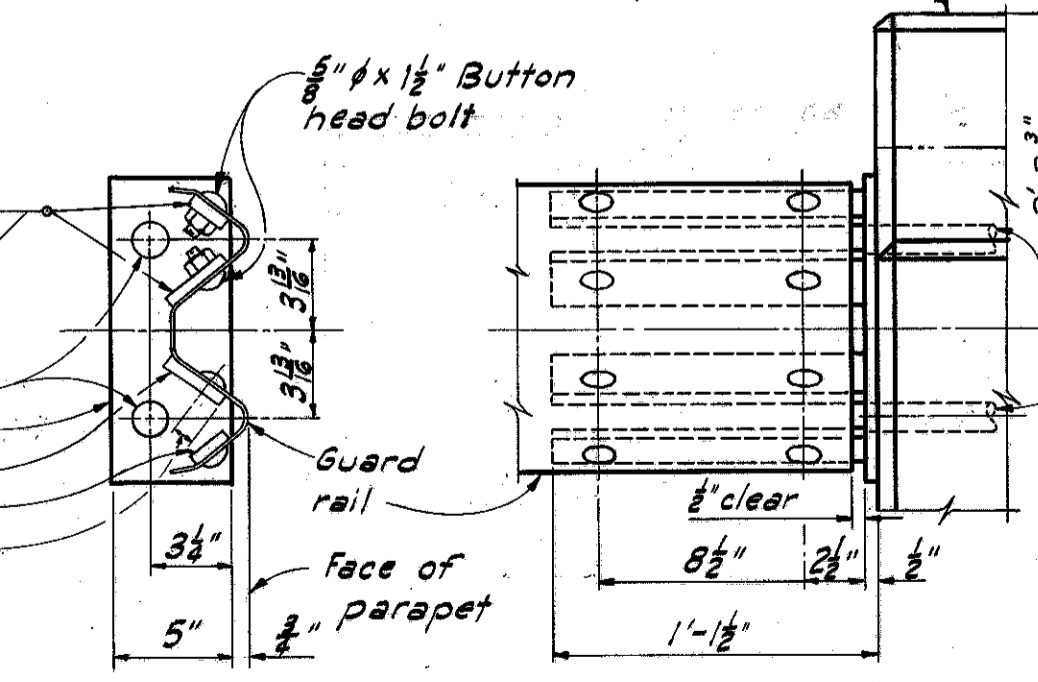
WINGWALL ELEVATION



SECTION B-B



SECTION C-C



GUARD RAIL DETAIL (as seen from pavement side)

NOTE: Guard rail end connection assembly shall be galvanized after welding.

NOTE: Payment of end connection included with bridge railing for payment.

- NOTES**
- Porous backfill 2 feet full length of abutment shall extend up to the underside of the approach slab.
  - Procedure: The embankment shall be placed and compacted to subgrade elevation, after which excavation shall be made for the abutments.
  - Design foundation Pressure is 2 1/2 Tons per sq. ft.
  - All abutment concrete shall be Class "E".
  - Concrete and reinforcing steel above parapet construction joints included with railing for payment.

**TABLE OF ELEVATIONS**

LOCATION	A	B	C	D	E	F	G	H	I
ABUTMENT NO.1	959.43	959.67	959.47	955.02	955.15	955.28	955.17	955.06	948.96
ABUTMENT NO.2	959.43	959.67	959.47	955.02	955.15	955.28	955.17	955.06	948.96

MICHAEL BAKER JR., CONSULTING ENGINEERS  
ROCHESTER, PENNSYLVANIA

**ABUTMENTS**  
BRIDGE NO. CUY. -1-1725  
UNDER HIGHLAND ROAD

CUYAHOGA CO. STA. 70 + 84.77

Designed	Drawn	Traced	Checked	Reviewed-Date	Revised
E.E.W.	W.A.U.	B.C.W.	G.S.W.	H.G.H. 12-30-58	1-17-60

Sheet 3 of 6