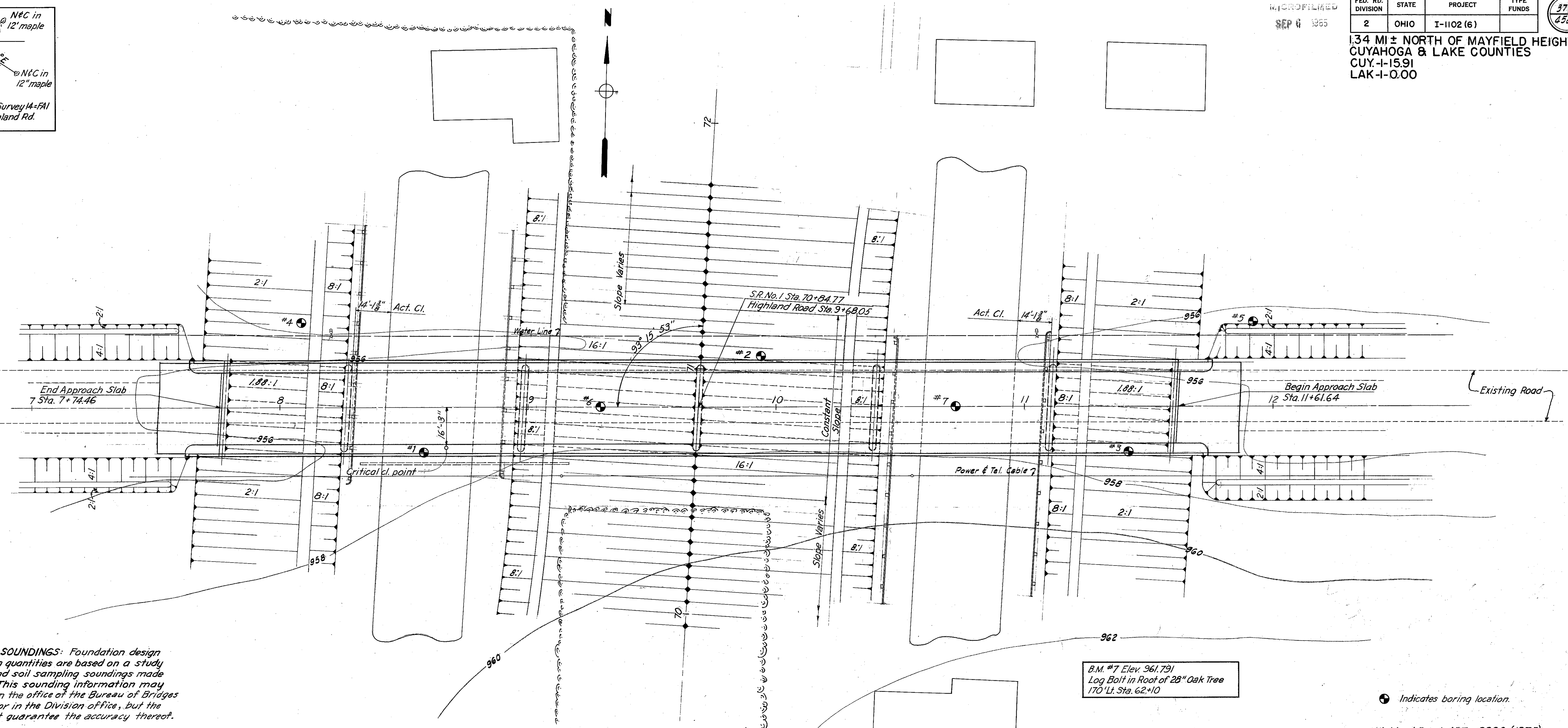
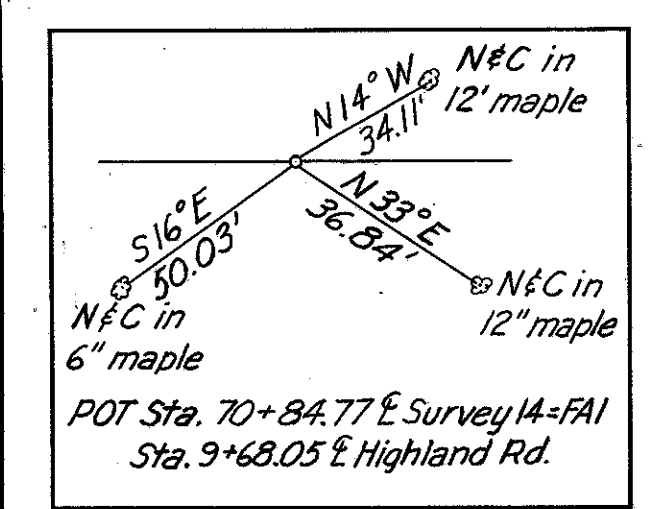


MICROFILMED
SEP 6 1965

FED. RD. DIVISION	STATE	PROJECT	TYPE FUNDS
2	OHIO	I-1102 (6)	

373
458

1.34 MI ± NORTH OF MAYFIELD HEIGHTS
CUYAHOGA & LAKE COUNTIES
CUY.-I-15.91
LAK-I-0.00

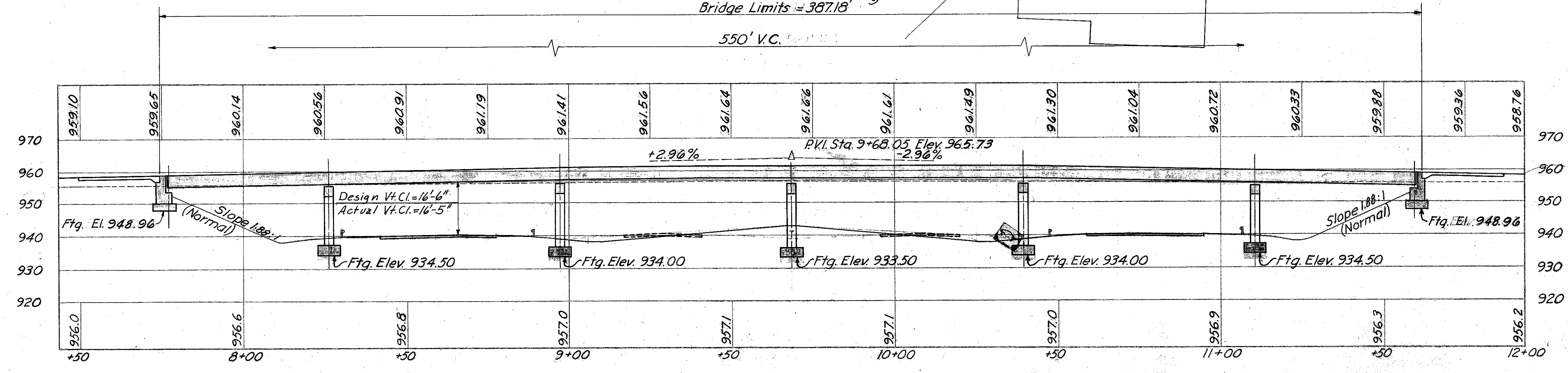


FOUNDATION SOUNDINGS: Foundation design and foundation quantities are based on a study of borings and soil sampling soundings made at the site. This sounding information may be inspected in the office of the Bureau of Bridges in Columbus or in the Division office, but the state does not guarantee the accuracy thereof.

B.M. #7 Elev. 961.791
Log Bolt in Root of 28" Oak Tree
170' Lt. Sta. 62+10

● Indicates boring location.

Highland Road ADT = 3800 (1975)



PROPOSED STRUCTURE

TYPE: Continuous steel beams with reinforced concrete deck and substructure.

SPANS: 49'-0", 71'-2", 71'-2", 71'-2", 49'-0" % bearings.

ROADWAY: 28' % of 4'-2" sidewalks.

LOAD FREQUENCY: C.F. = 130 (37)

WEARING SURFACE: 1/4" Mono. Conc.

APPROACH SLAB: Special Design (25' long)

SKEW: 3° 15' 53" L.F.

ALIGNMENT: Tangent.

MICHAEL BAKER JR., CONSULTING ENGINEERS
ROCHESTER, PENNSYLVANIA

SITE PLAN
BRIDGE NO. CUY. - I-1725
UNDER HIGHLAND ROAD

CUYAHOGA CO STA. 70+84.77
SCALE 1" = 20'

PRESENT	TOPOGRAPHY	PROPOSED	WORK
Surveyed M.B.Jr.	Drawn B.C.W.	Designed E.E.W.	Checked G.S.W.

Sheet 1 of 6
Revised 4-19-60