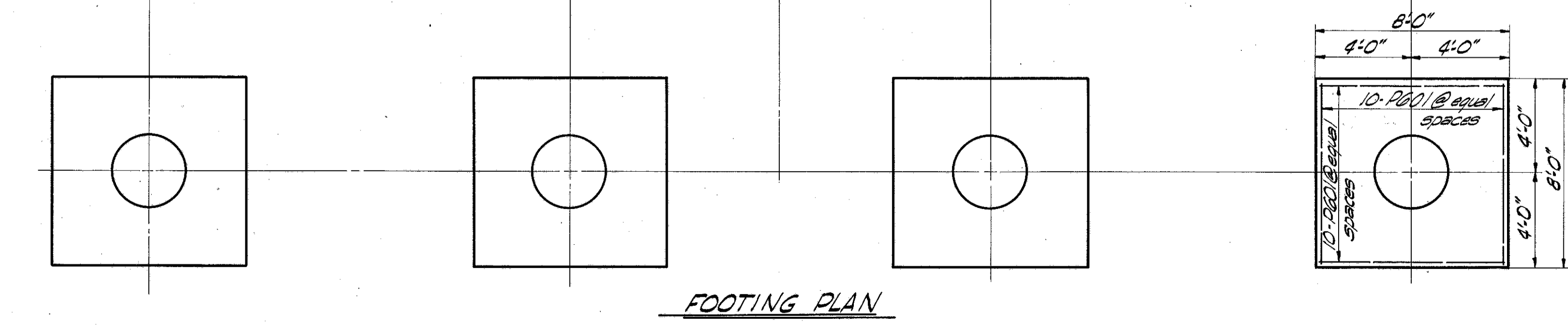
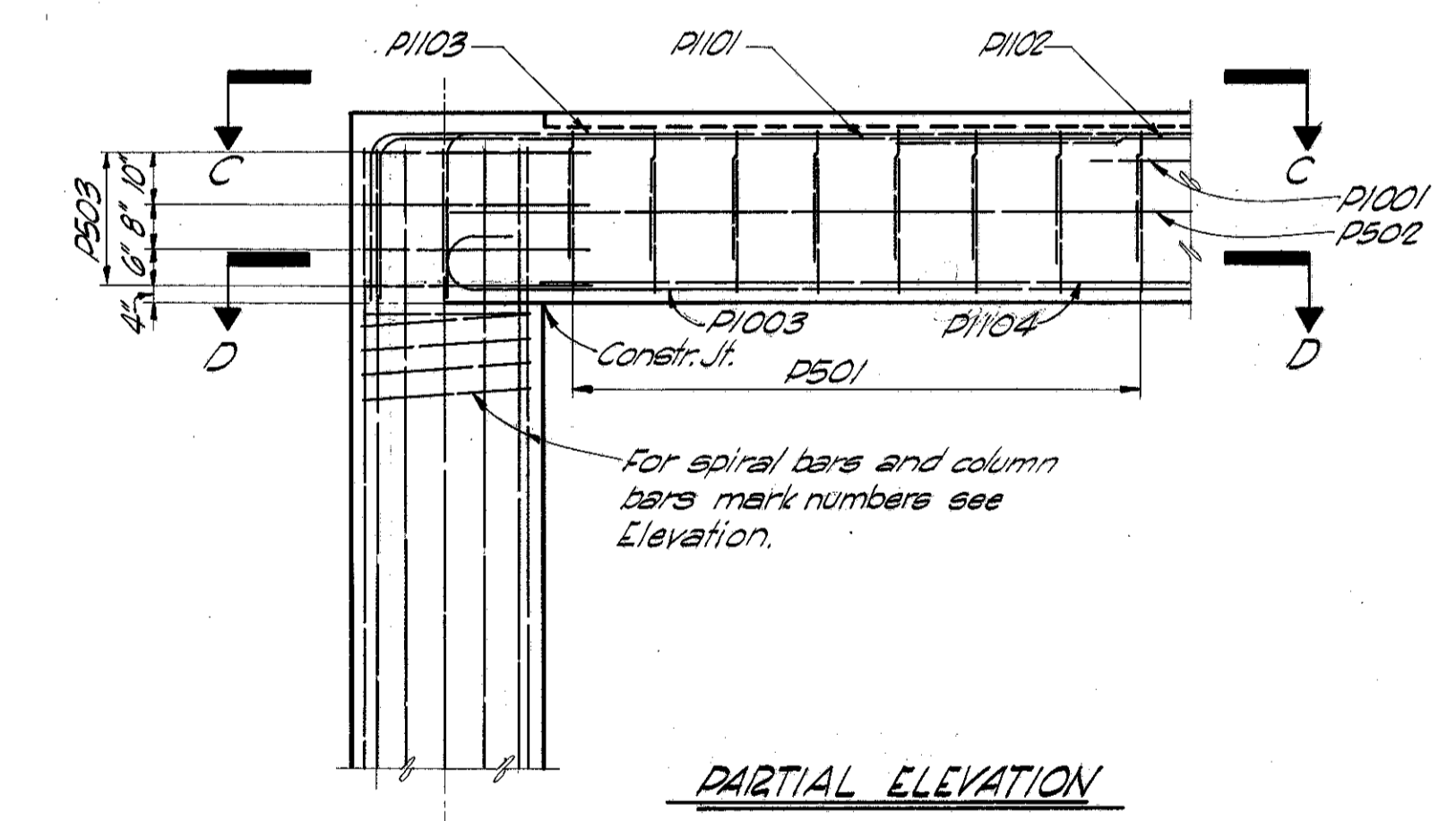
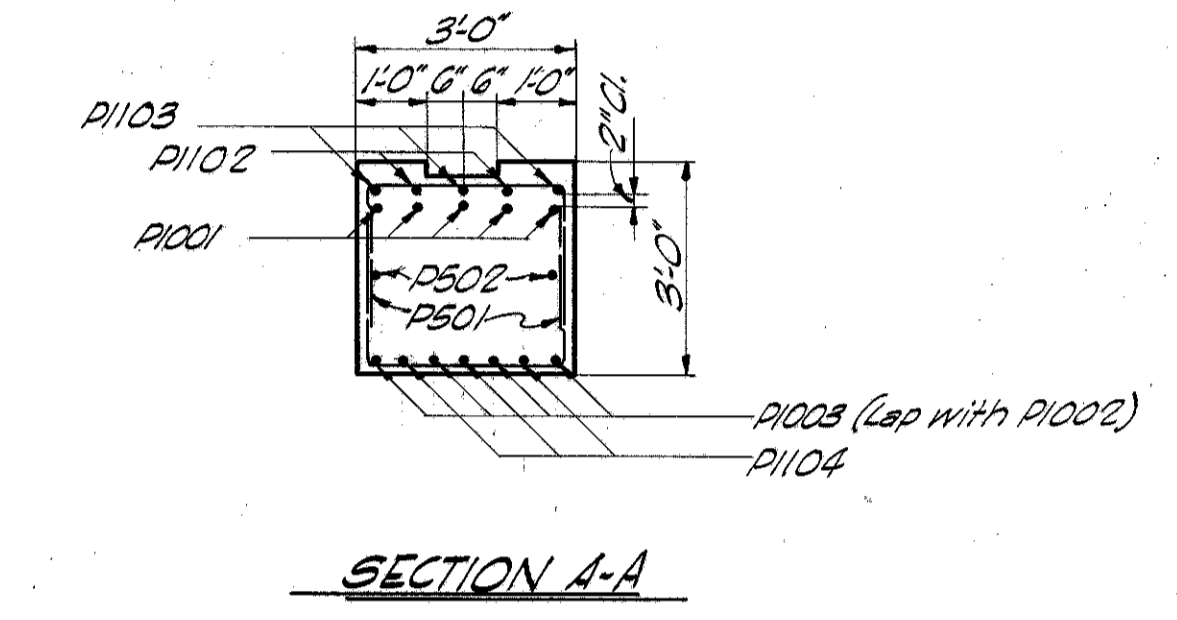
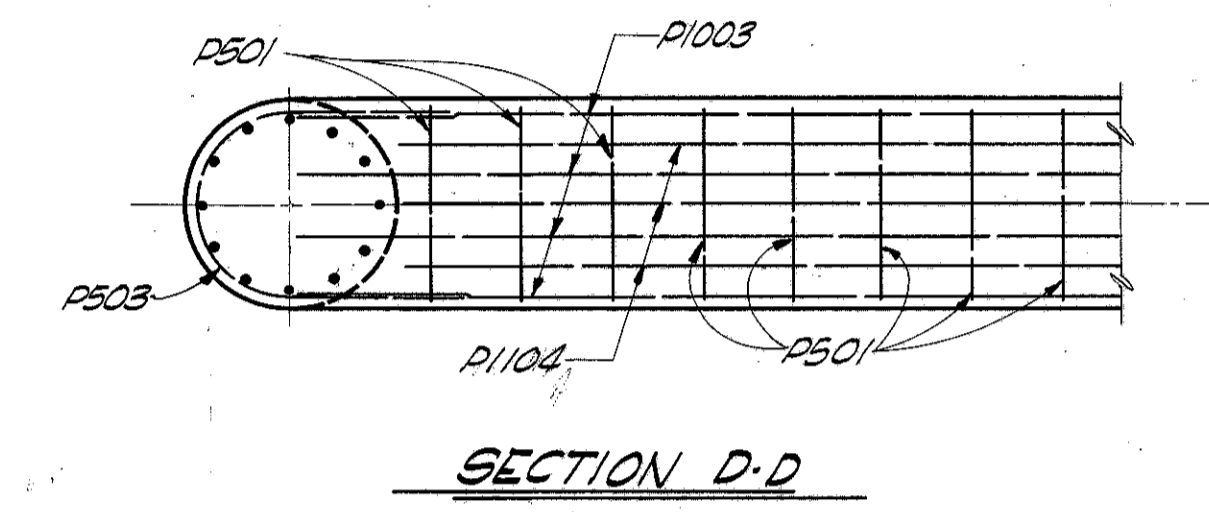
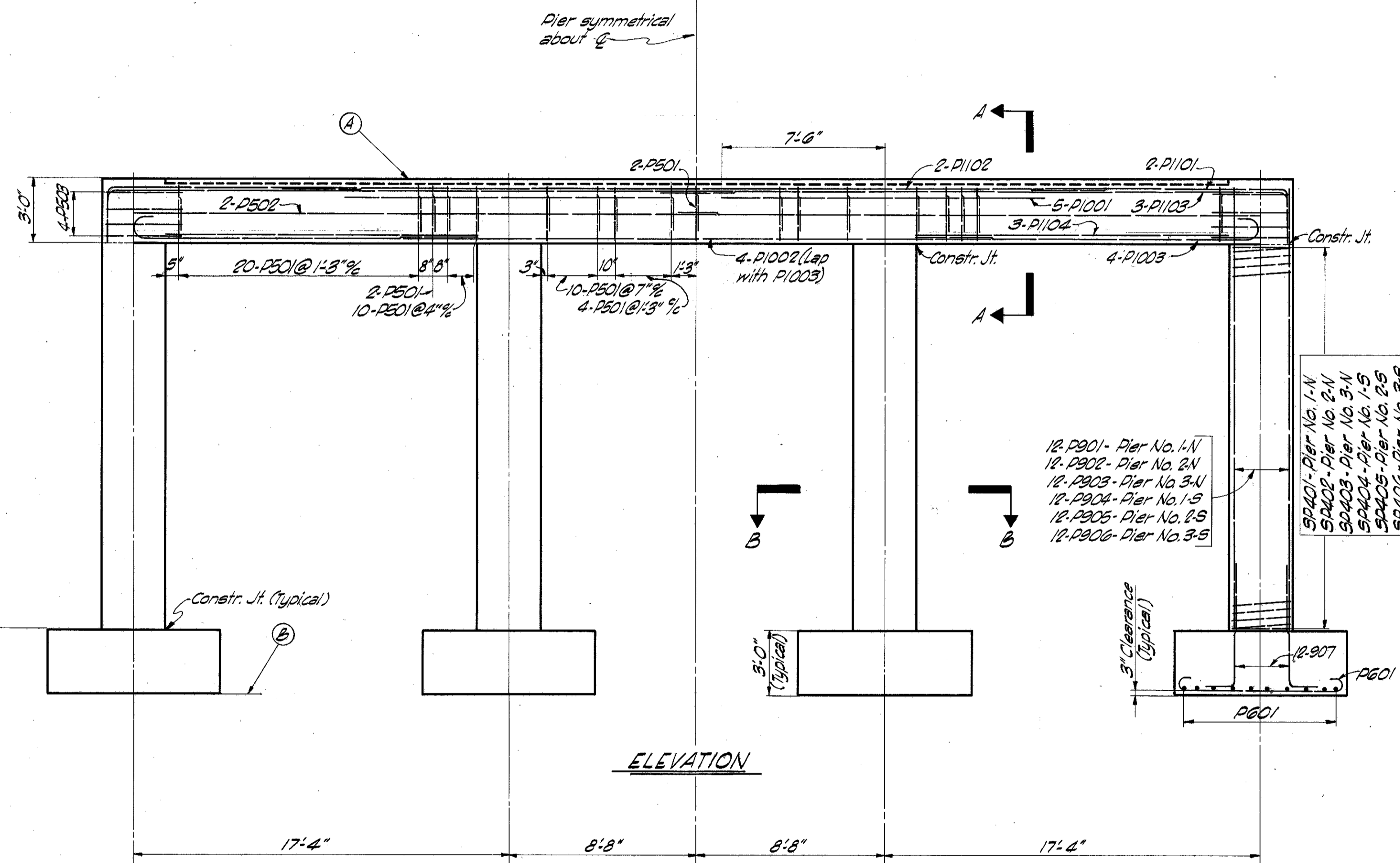
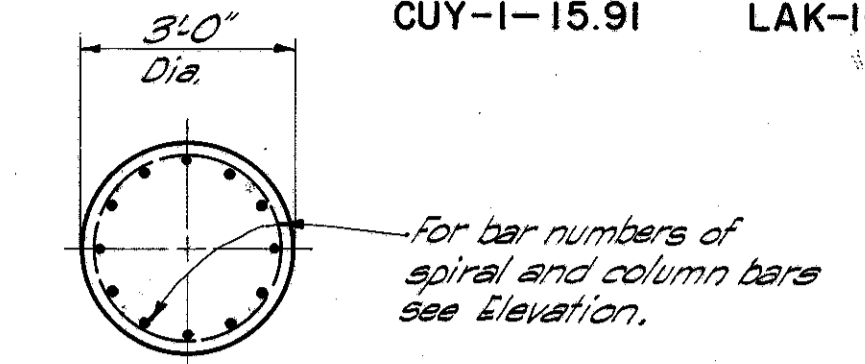
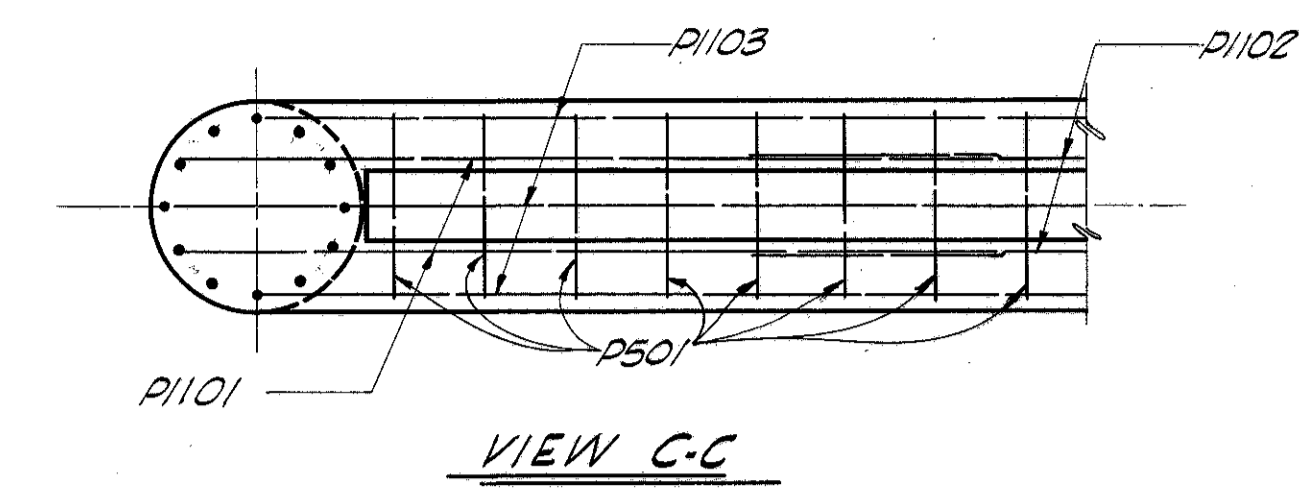


NOTE: The downward lag of P1101 and P1103 to be placed in the periphery of the vertical column bars.



NOTE: All dimensions and reinforcing steel shown for footings are typical for all piers.

	NORTH BOUND		SOUTHBOUND	
	A	B	A	B
Pier No. 1	1013.86	988.0	1013.04	989.5
Pier No. 2	1013.13	988.0	1012.94	989.5
Pier No. 3	1012.41	988.0	1012.24	989.5

MICHAEL BAKER, JR. CONSULTING ENGINEERS
ROCHESTER, PENNSYLVANIA

PIERS
BRIDGE NO. CUY - I - 1631 N & S
OVER WILSON MILLS ROAD

CUYAHOGA COUNTY
STA. 20+96.97
TO 22+43.27

Designed	Drawn	Traced	Checked	Reviewed-Date	Revised
J.V.W.			C.V.P.	H.G.H. 12-30-58	