

MICROFILMED  
SEP 6 1965

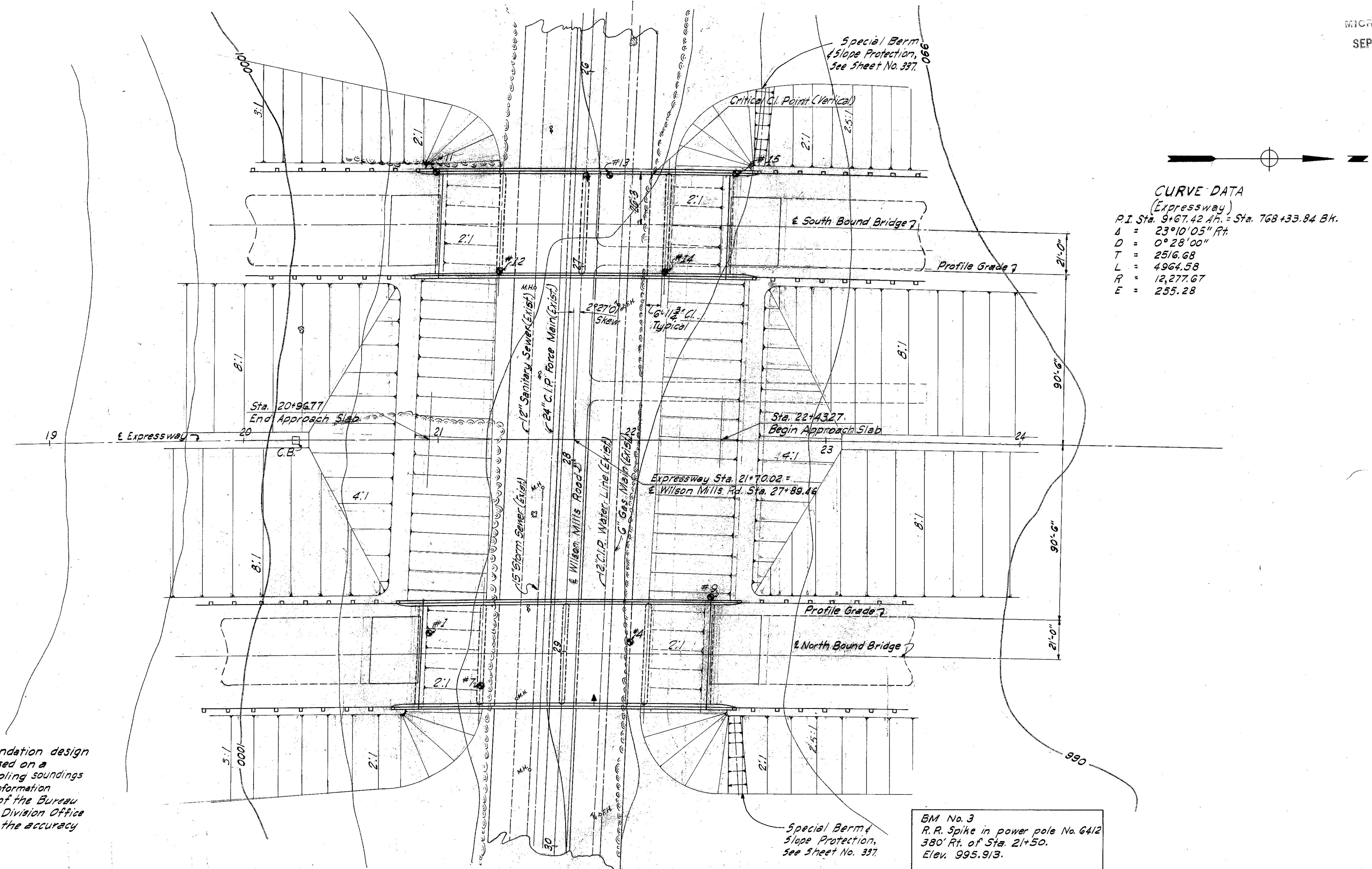
FED. RD. DIVISION	STATE	PROJECT	TYPE FUNDS
2	OHIO	I-1102(6)	

367  
158

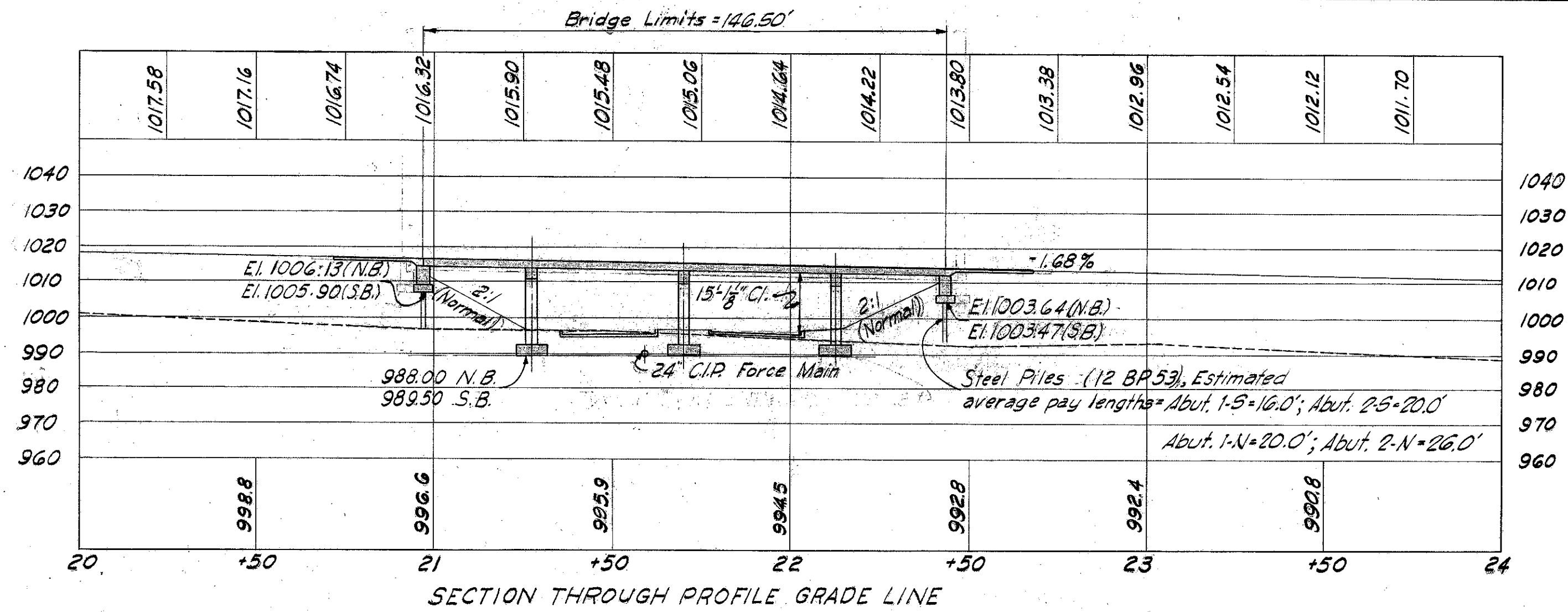
0.4 MI. NORTH OF MAYFIELD HEIGHTS  
CUYAHOGA & LAKE COUNTIES  
CUY-1-15.91 LAK-1-0.00

**CURVE DATA**  
(Expressway)  
P.I. Sta. 9+67.42 A.P. = Sta. 768+33.84 B.K.  
A = 23°10'05" Pt.  
D = 0°28'00"  
T = 2516.68  
L = 4964.58  
R = 12,277.67  
E = 255.28

**FOUNDATION SOUNDINGS:** Foundation design and foundation quantities are based on a study of borings and soil-sampling soundings made at the site. This sounding information may be inspected in the office of the Bureau of Bridges in Columbus or in the Division Office but the State does not guarantee the accuracy thereof.



⊙ Indicates Boring location.  
↑ Indicates Delineators



BM No. 3  
R.R. Spike in power pole No. 6412  
380' Rt. of Sta. 21+50.  
Elev. 995.913.

**PROPOSED STRUCTURES**  
(TWO BRIDGES)  
TYPE: Continuous reinforced concrete slab with reinforced concrete substructure.  
SPANS: 30'-0" 42'-6" 42'-6" 30'-0"  
ROADWAY: 54'-0" W of Parapets.  
LOAD FREQUENCY: CF=2000(57) adequate for A.A.S.H.O. alternate loading.  
WEARING SURFACE: 1" Mono. Conc.  
APPROACH SLAB: AS-1-54 (25' long)  
SKEW: 2°21'01" L.F.  
ALIGNMENT: 0°28'00" Right Curve.  
SUPERELEVATION: None.

MICHAEL BAKER JR., CONSULTING ENGINEERS  
ROCHESTER, PENNSYLVANIA

**SITE PLAN**  
BRIDGE NO. CUY-1-1631 N&S  
OVER WILSON MILLS ROAD

CUYAHOGA COUNTY STA. 20+96.77  
SCALE: 1" = 30' TO 22+43.27

PRESENT	TOPOGRAPHY	PROPOSED	WORK
Surveyed M.B. Jr.	Drawn B.C.W.	Designed M.A.B. J.V.W.	Drawn B.C.W. C.R.H. Checked J.V.W. Reviewed H.G.H. 12-30-58