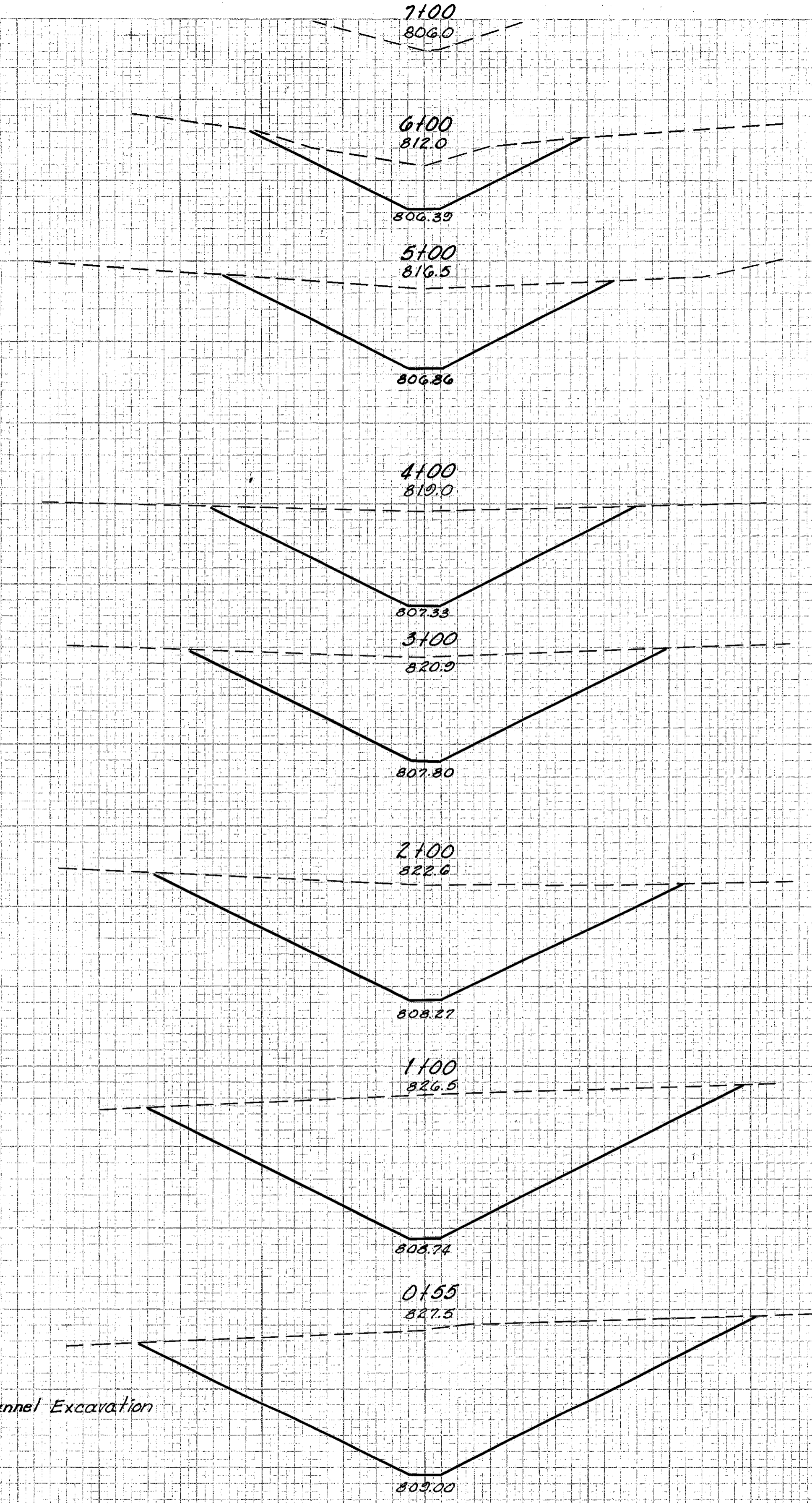


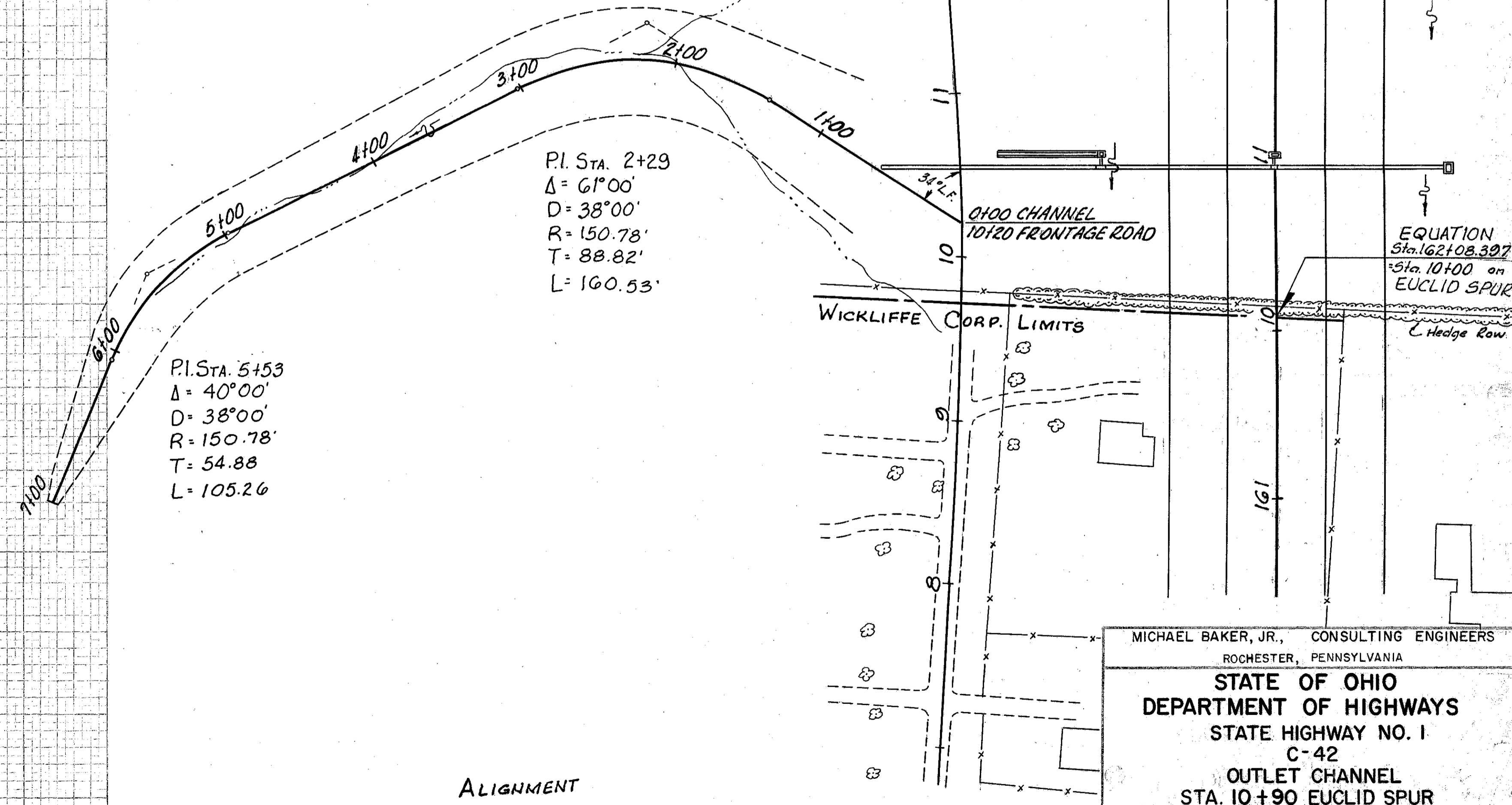
FINAL SURVEY PLANS
 NOTE BOOK NO. 1000
 DATE 10/15/1915
 ENGINEER L.S.I.

End Area	Cut	Sq. Yds.
138		
739		
261		
1104		
335		
1369		
404		
1669		
497		
2209		
696		
1207		
752		
Total	8297	Cu. Yds. E-3 Channel Excavation



PI. STA. 5+53
 $\Delta = 40^{\circ}00'$
 $D = 38^{\circ}00'$
 $R = 150.78'$
 $T = 54.88'$
 $L = 105.26'$

PI. STA. 2+29
 $\Delta = 61^{\circ}00'$
 $D = 38^{\circ}00'$
 $R = 150.78'$
 $T = 88.82'$
 $L = 160.53'$



FED. RD. DIVISION	STATE	PROJECT
2	OHIO	I-1103 (18)

366
458

CUYAHOGA & LAKE COUNTIES
 CUY-I-15.91
 LAK-I- 0.00

MICHAEL BAKER, JR., CONSULTING ENGINEERS
 ROCHESTER, PENNSYLVANIA

STATE OF OHIO
 DEPARTMENT OF HIGHWAYS
 STATE HIGHWAY NO. 1
 C-42
 OUTLET CHANNEL
 STA. 10+90 EUCLID SPUR

Designed	Drawn	Traced	Checked	Reviewed	Date	Revised
L.S.I.	L.S.I.	E.P.C.	B.P.			

ALIGNMENT