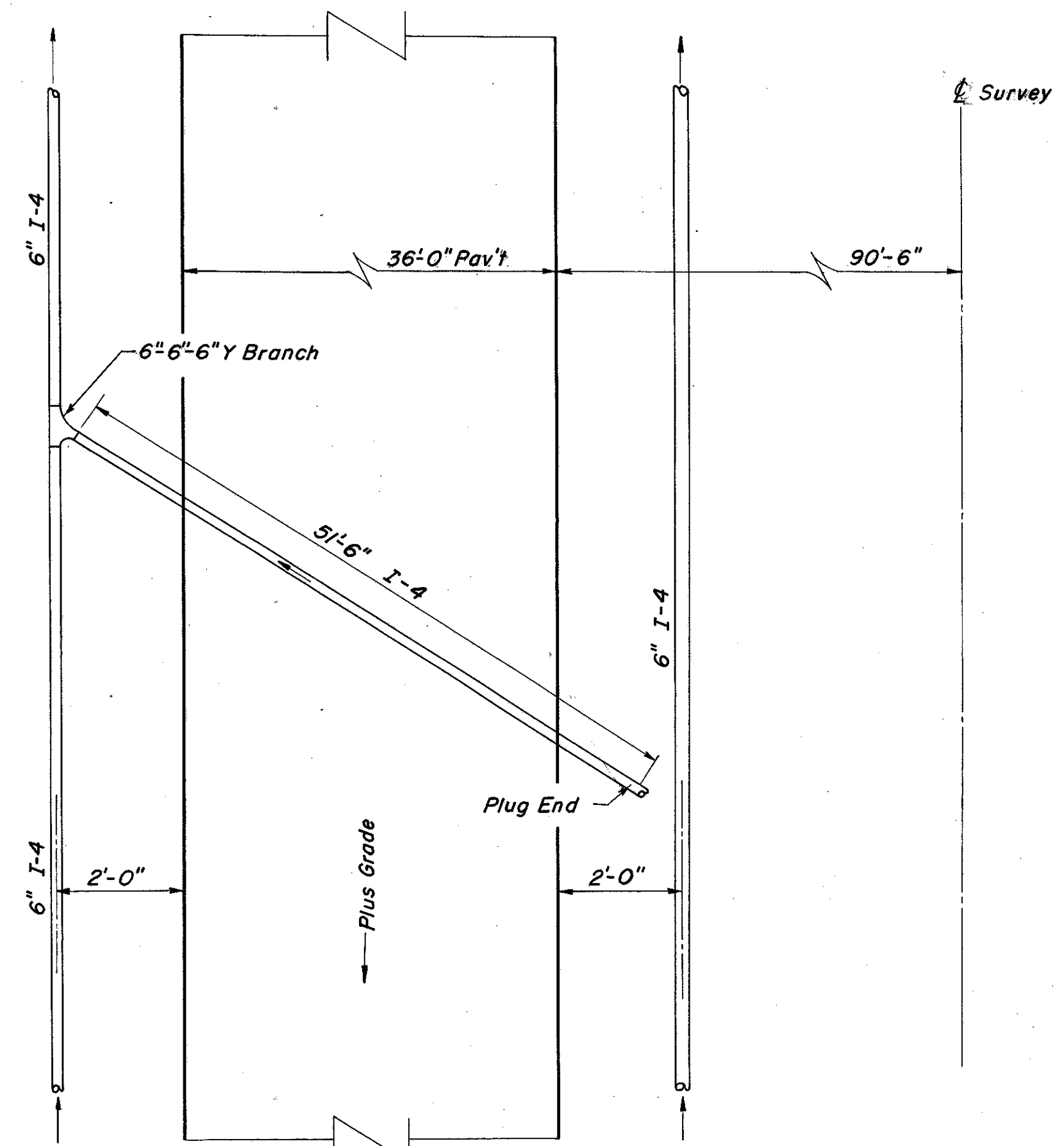
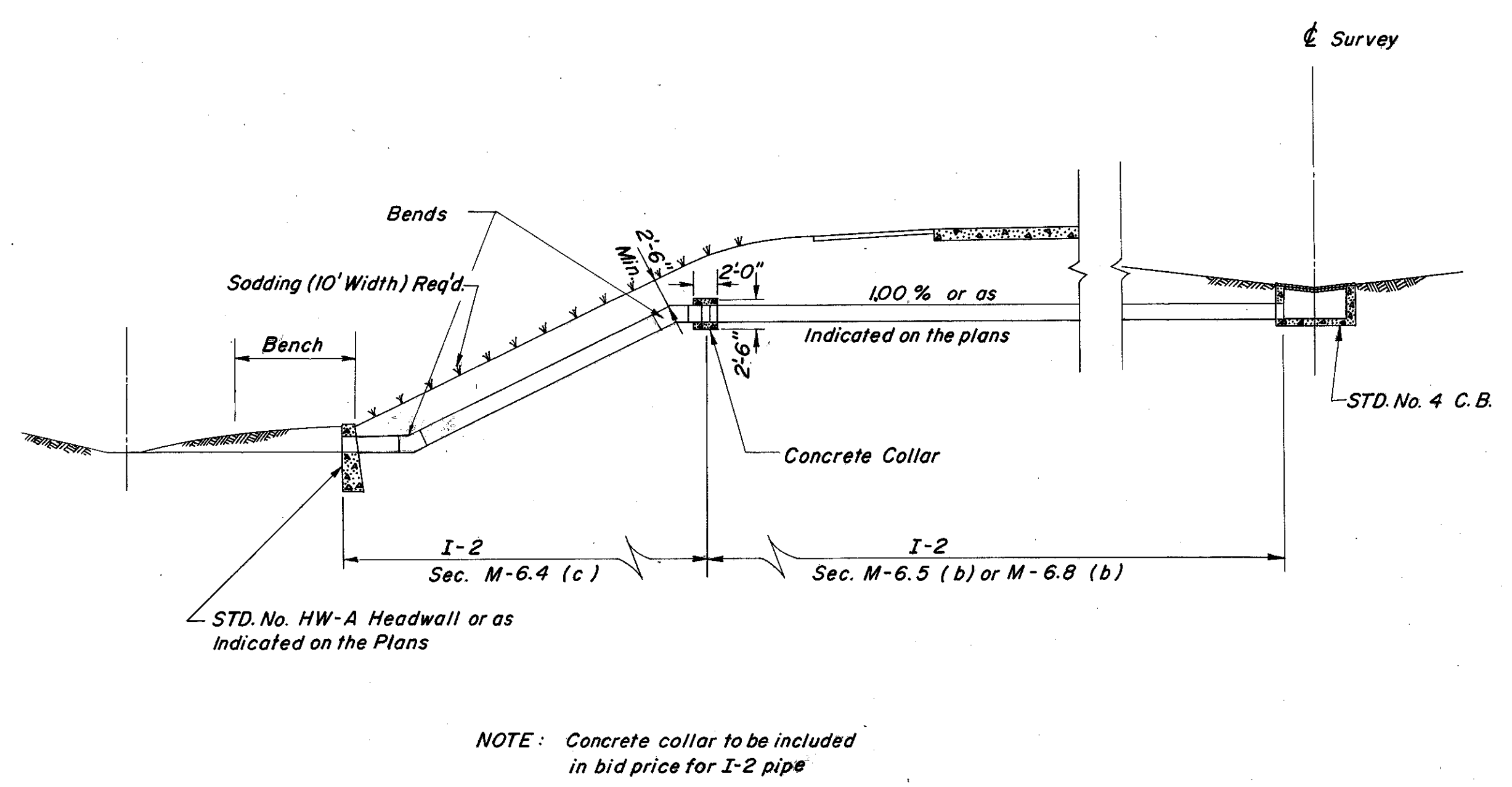


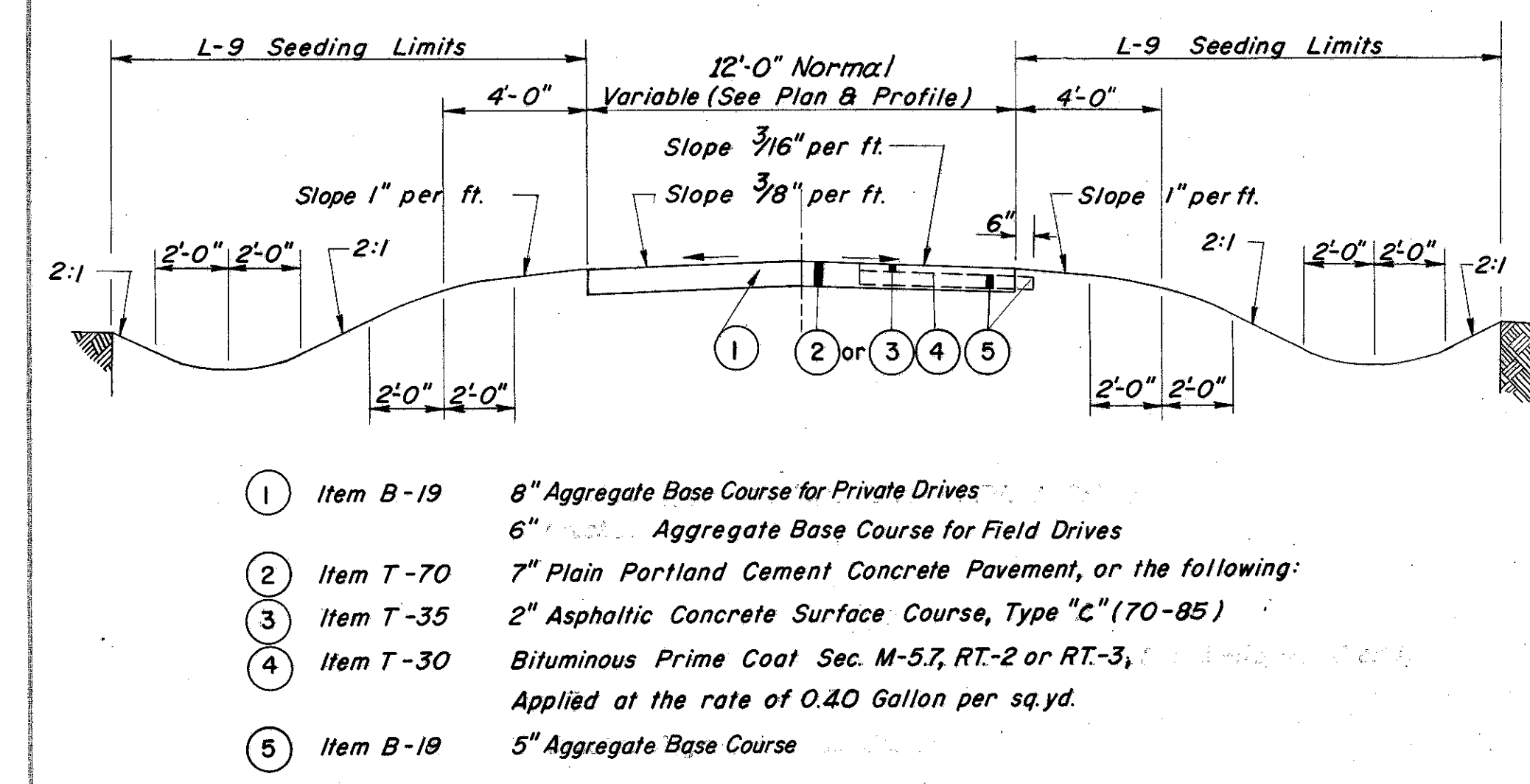
CUYAHOGA & LAKE COUNTIES
 CUY-1-15.91
 LAK-1-0.00



TRANSVERSE UNDERDRAIN DETAIL "G"



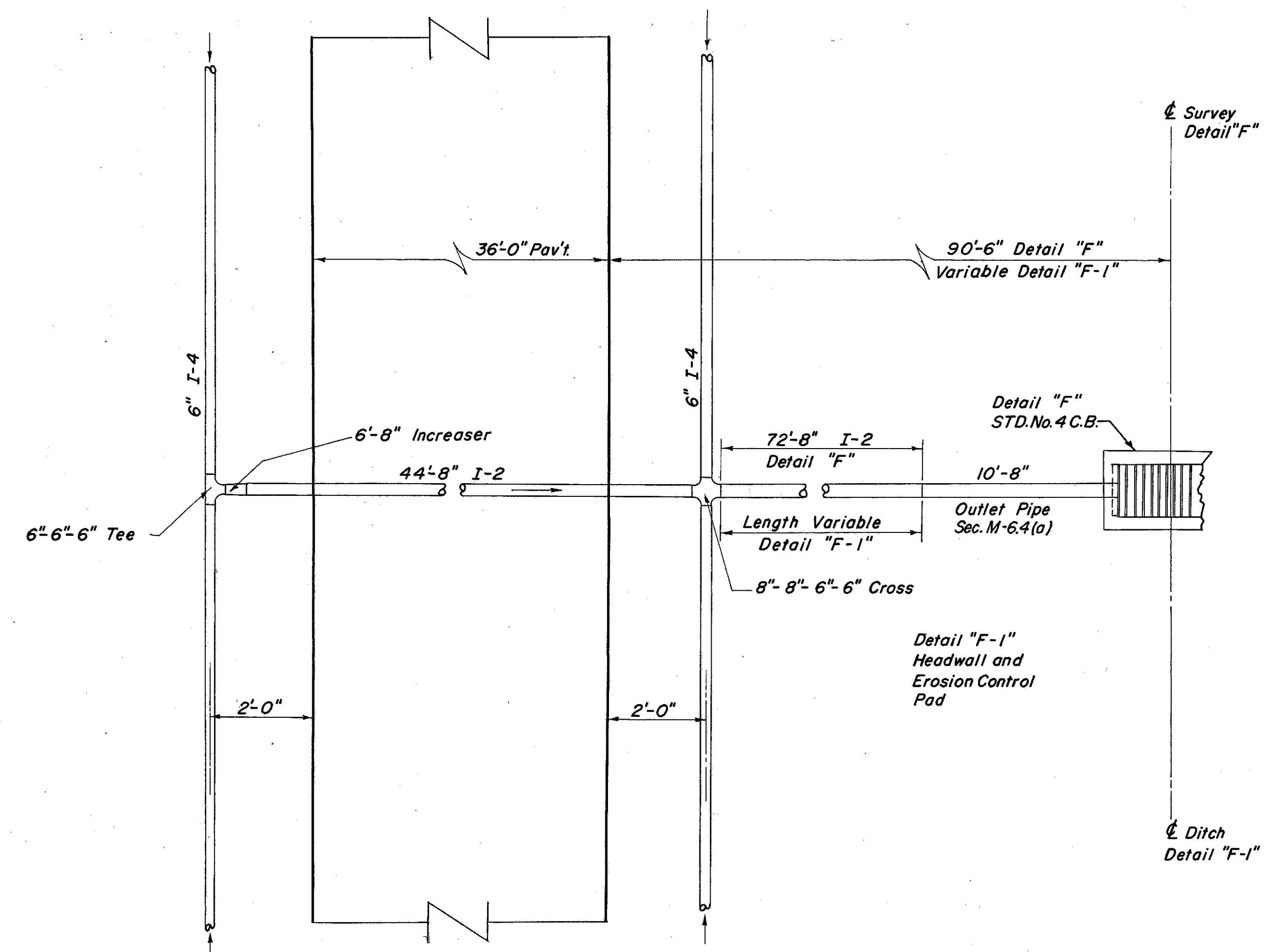
MEDIAN OUTLET DETAIL IN HIGH FILL "H"



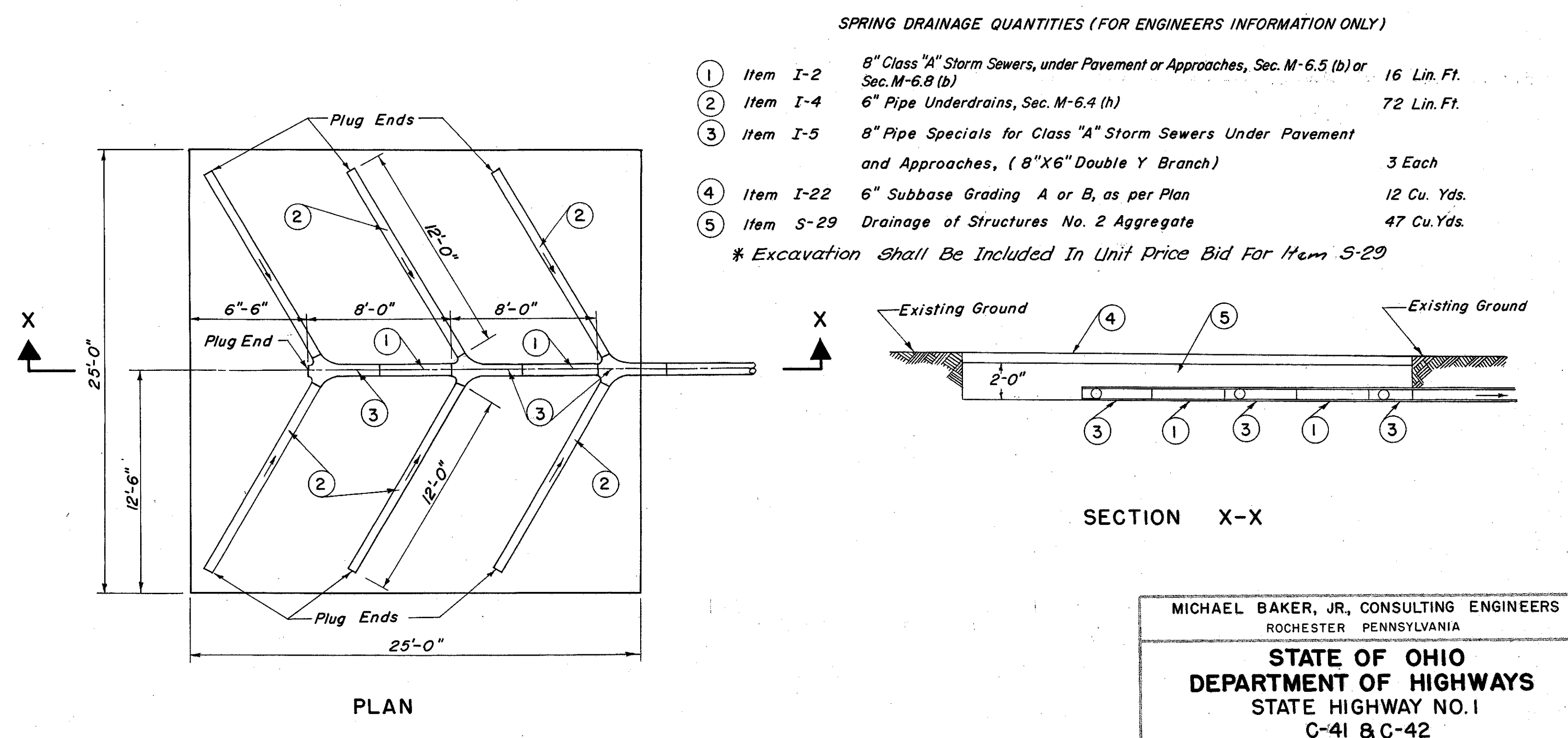
- ① Item B-19 8" Aggregate Base Course for Private Drives
6" Aggregate Base Course for Field Drives
- ② Item T-70 7" Plain Portland Cement Concrete Pavement, or the following:
- ③ Item T-35 2" Asphaltic Concrete Surface Course, Type "C" (70-85)
- ④ Item T-30 Bituminous Prime Coat Sec. M-5.7, RT-2 or RT-3,
Applied at the rate of 0.40 Gallon per sq.yd.
- ⑤ Item B-19 5" Aggregate Base Course

Scale: 1/4" = 1'-0"

TYPICAL SECTION - TYPE 1 OR 2 DRIVES



UNDERDRAIN OUTLET DETAIL "F" & "F-1"



SPRING DRAINAGE QUANTITIES (FOR ENGINEERS INFORMATION ONLY)

- ① Item I-2 8" Class "A" Storm Sewers, under Pavement or Approaches, Sec. M-6.5 (b) or Sec. M-6.8 (b) 16 Lin. Ft.
 - ② Item I-4 6" Pipe Underdrains, Sec. M-6.4 (h) 72 Lin. Ft.
 - ③ Item I-5 8" Pipe Specials for Class "A" Storm Sewers Under Pavement and Approaches, (8" X 6" Double Y Branch) 3 Each
 - ④ Item I-22 6" Subbase Grading A or B, as per Plan 12 Cu. Yds.
 - ⑤ Item S-29 Drainage of Structures No. 2 Aggregate 47 Cu. Yds.
- * Excavation Shall Be Included In Unit Price Bid For Item S-29

TYPICAL SPRING DRAINAGE DETAIL

MICHAEL BAKER, JR., CONSULTING ENGINEERS
 ROCHESTER PENNSYLVANIA

STATE OF OHIO
 DEPARTMENT OF HIGHWAYS
 STATE HIGHWAY NO. 1
 C-41 & C-42

MISCELLANEOUS DETAILS

Designed	Drawn	Traced	Checked	Reviewed Date	Revised
g	L.E.W.	K.L.G.	L.S.I.		