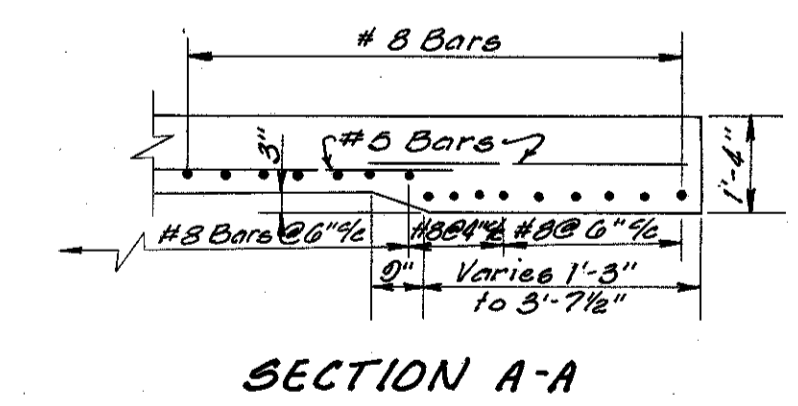
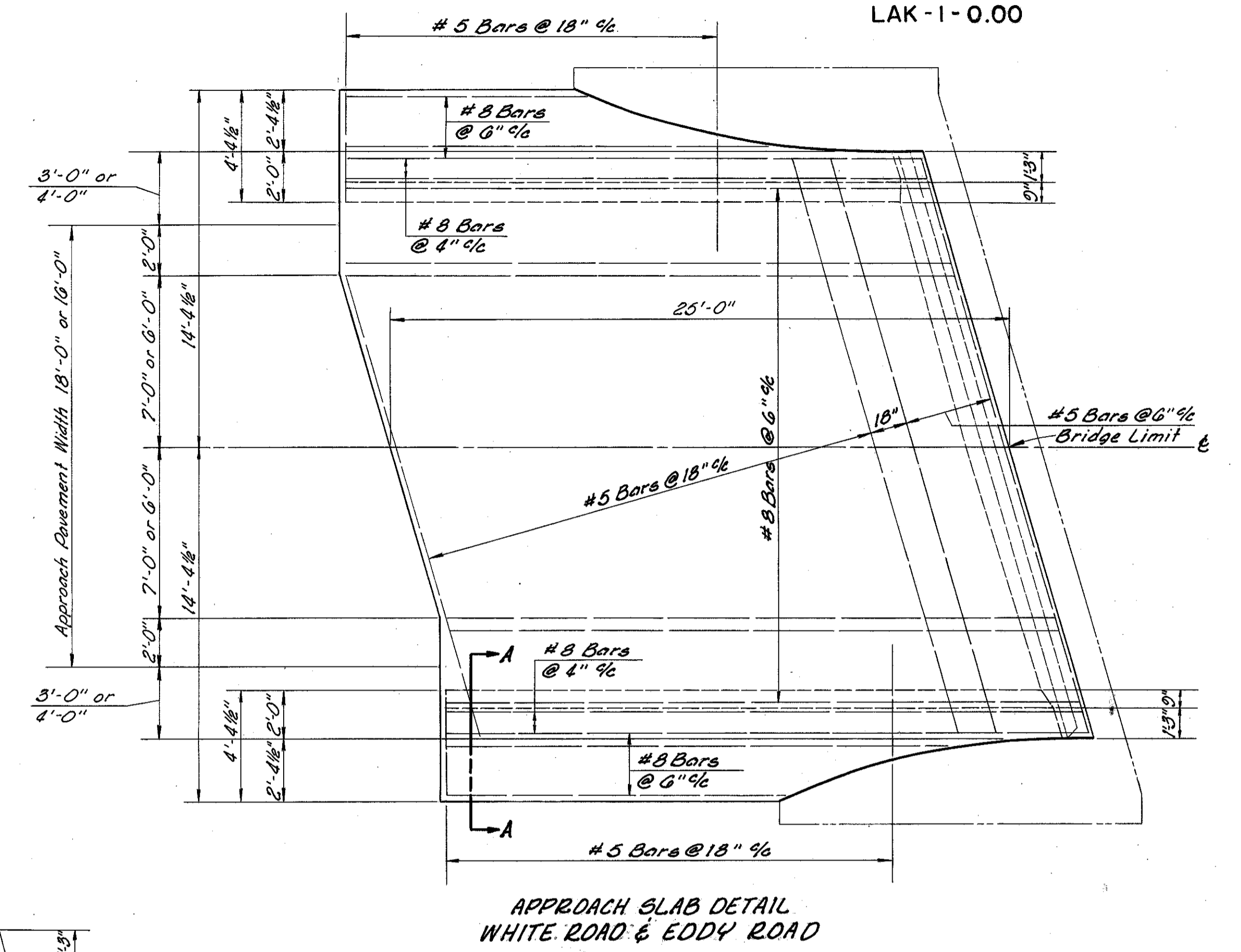
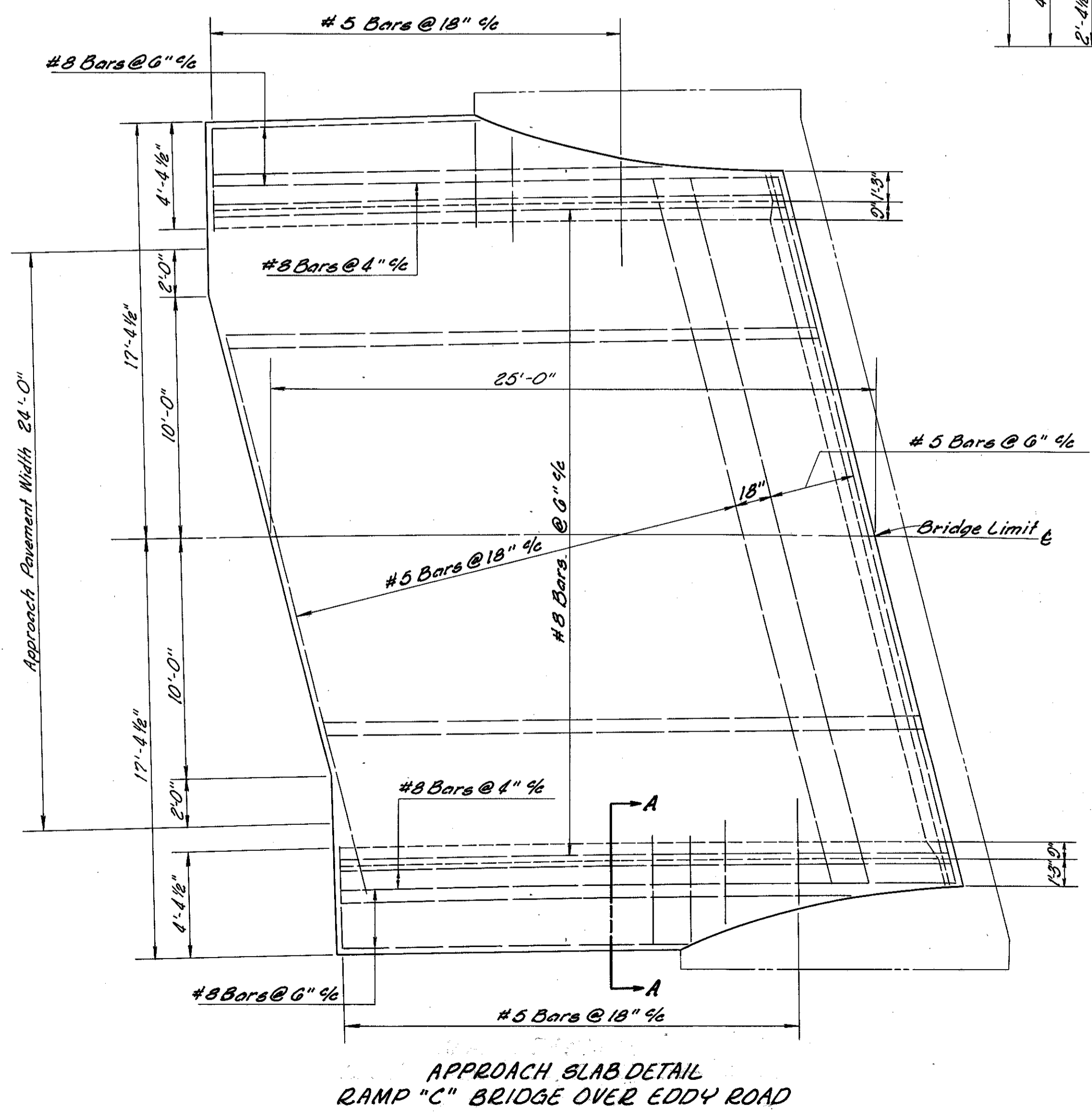
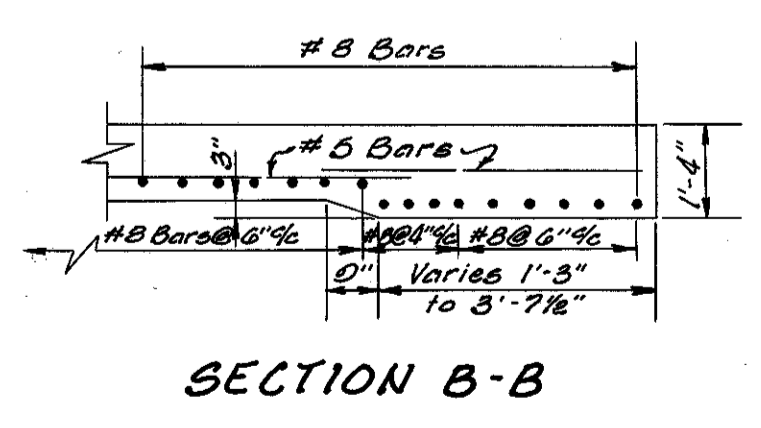
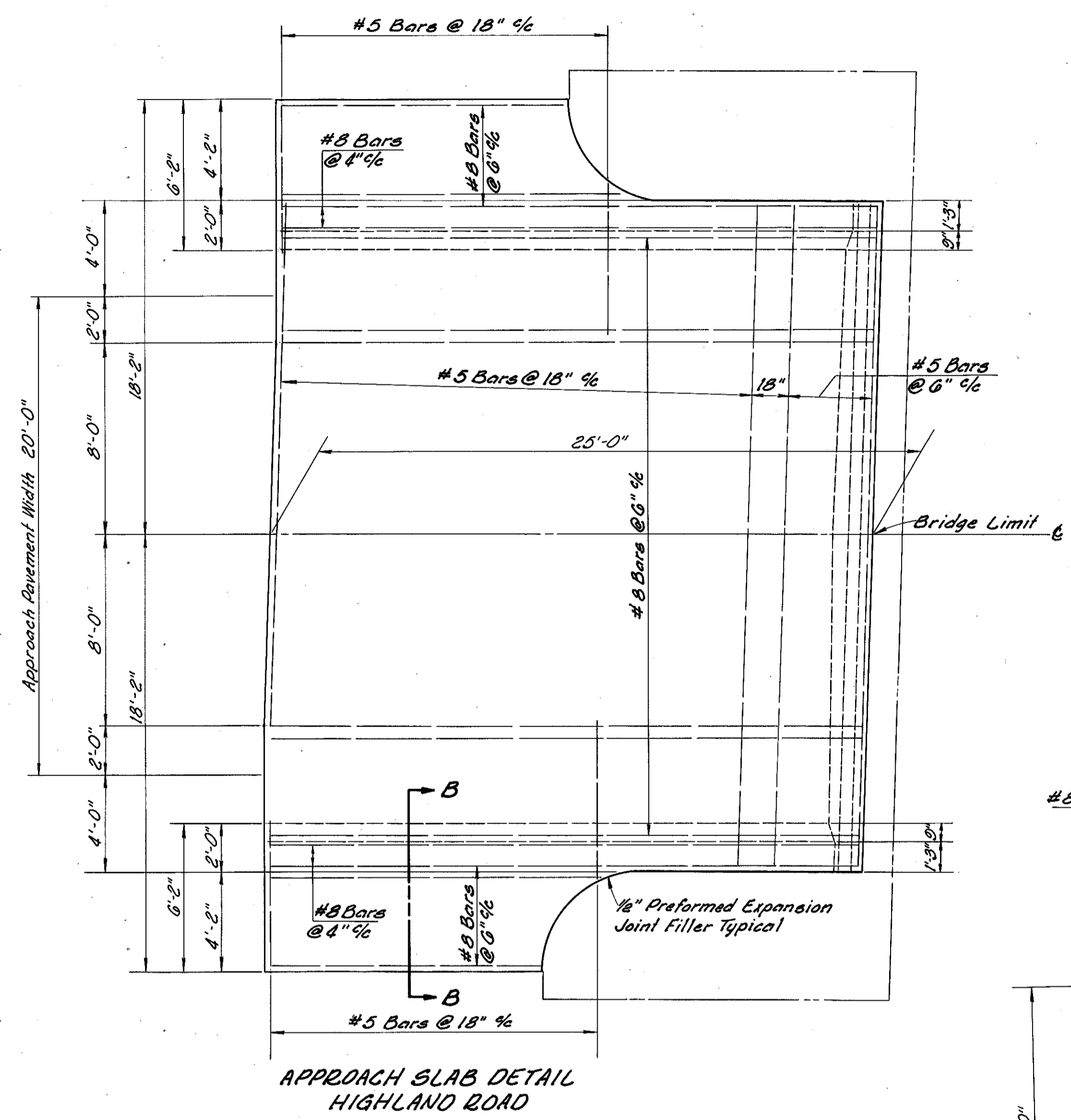


CUYAHOGA & LAKE COUNTIES
CUY-1-15.91
LAK-1-0.00



MICHAEL BAKER, JR., CONSULTING ENGINEERS
ROCHESTER, PENNSYLVANIA

STATE OF OHIO
DEPARTMENT OF HIGHWAYS
STATE HIGHWAY NO. 1
C-41 & C-42

TYPICAL APPROACH SLAB DETAILS

Designed	Drawn	Traced	Checked	Reviewed Date	Revised
H.M.	C.V.P.	K.L.G.	B.P.		