

FINAL SURVEY  
 DATE: \_\_\_\_\_  
 SURVEYED BY: \_\_\_\_\_  
 CHECKED BY: \_\_\_\_\_  
 DATE: \_\_\_\_\_

FINAL SURVEY  
 DATE: \_\_\_\_\_  
 SURVEYED BY: \_\_\_\_\_  
 CHECKED BY: \_\_\_\_\_  
 DATE: \_\_\_\_\_

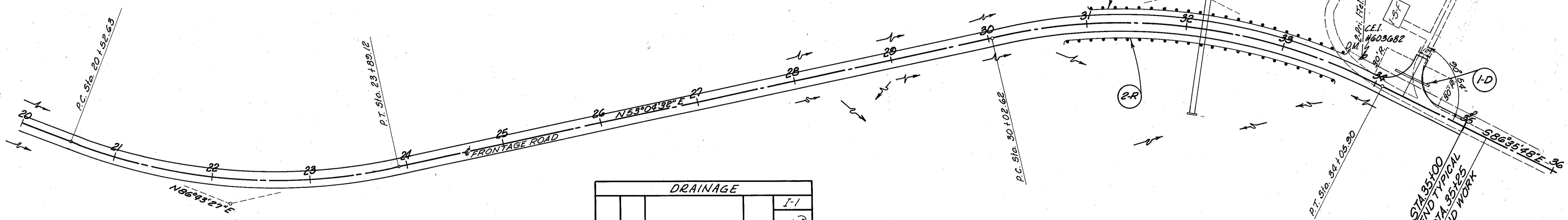
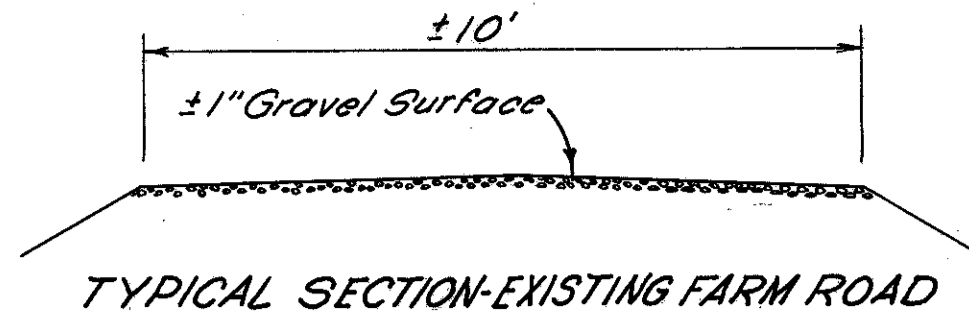
P.I. Sta. 22 + 25.88  
 $\Delta = 33^\circ 38' 55''$  Lt.  
 $D = 10^\circ 00'$   
 $R = 572.96'$   
 $T = 173.25'$   
 $L = 336.49'$   
 $E = 25.62'$

CUYAHOGA & LAKE COUNTIES  
 CUY-I-15.91  
 LAK-I-0.00

FED. RD. DIVISION	STATE	PROJECT
2	OHIO	I-1103(18)

327  
458

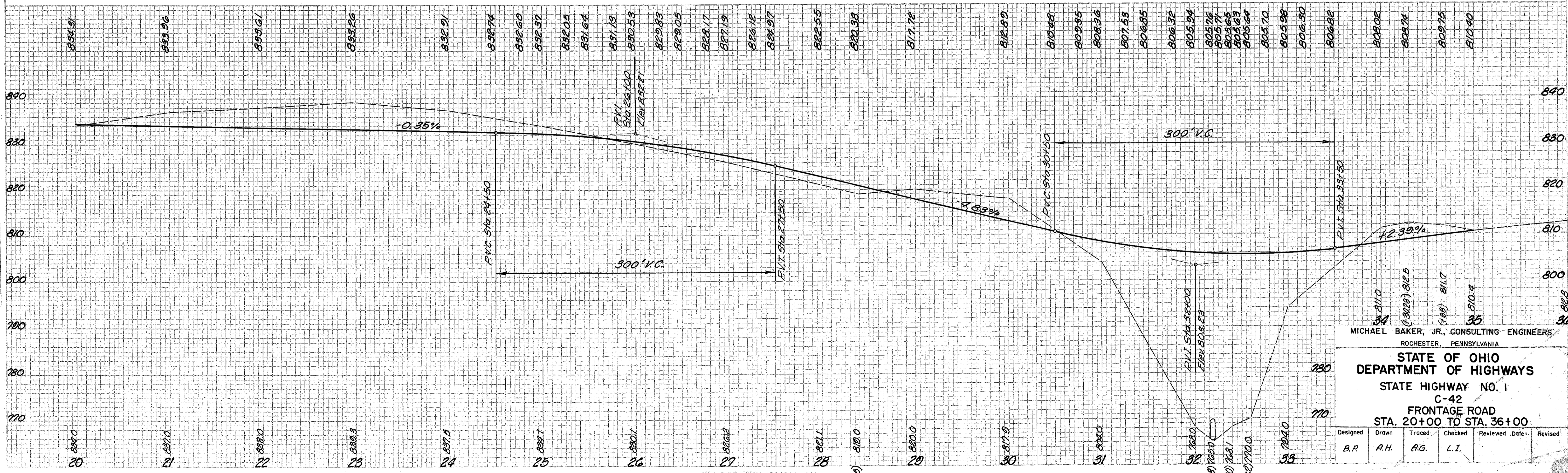
CUYAHOGA & LAKE COUNTIES  
 CUY-I-15.91  
 LAK-I-0.00



See Sheet No.	Ref. No.	Station		Side	I-1 Pipe for Driveways Sec. M.G. (ft)
		From	To		
	I-0	341.10	341.50	Lt.	40
Total:					40

P.I. Sta. 32 + 13.02  
 $\Delta = 40^\circ 19' 40''$  Rt.  
 $D = 10^\circ 00'$   
 $R = 572.96'$   
 $T = 210.40'$   
 $L = 403.28'$   
 $E = 37.40'$

Ref. No.	Station		Side	Guard Rail & Dwg. No. 2A Lin. Ft.
	From	To		
I-R	31 + 03.76	33 + 60	Lt.	262.5
Z-R	30 + 78.11	33 + 60	Rt.	275.0
Total:				537.5



MICHAEL BAKER, JR., CONSULTING ENGINEERS  
 ROCHESTER, PENNSYLVANIA

STATE OF OHIO  
 DEPARTMENT OF HIGHWAYS  
 STATE HIGHWAY NO. 1  
 C-42  
 FRONTAGE ROAD  
 STA. 20+00 TO STA. 36+00

Designed B.P.	Drawn A.H.	Traced A.G.	Checked L.I.	Reviewed Date	Revised
------------------	---------------	----------------	-----------------	---------------	---------