

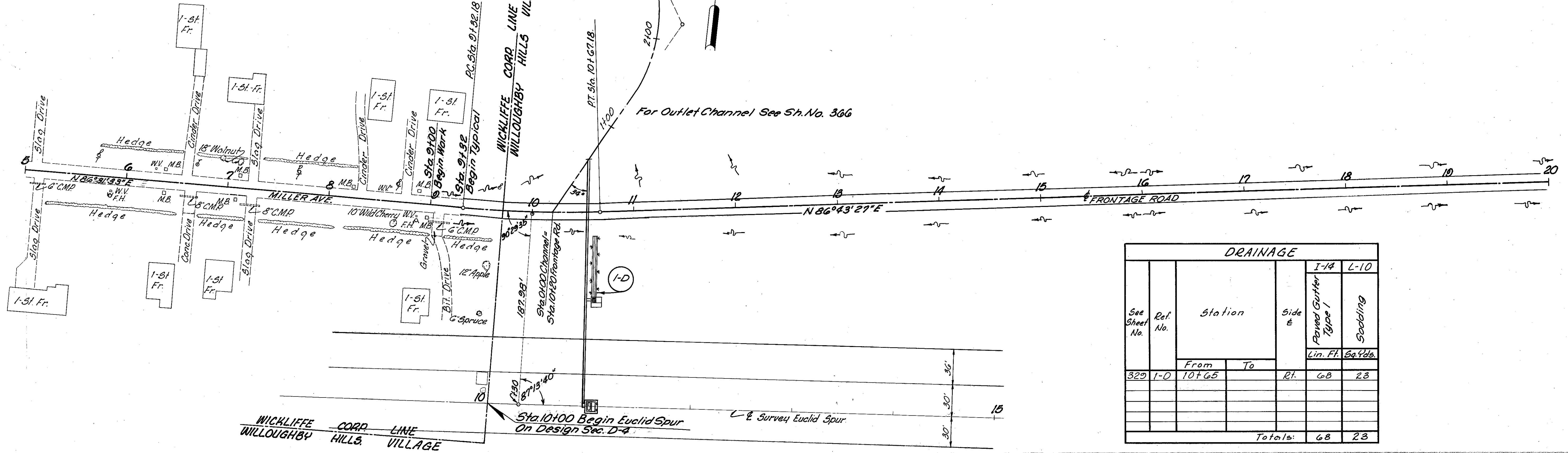
P.I. Sta. 9+00.76  
 Δ 6°45' Lt.  
 D 5°00'  
 R 1145.02'  
 T 67.53'  
 L 135.00'

NOTE: See Sheet No. 264 for location of Frontage Road

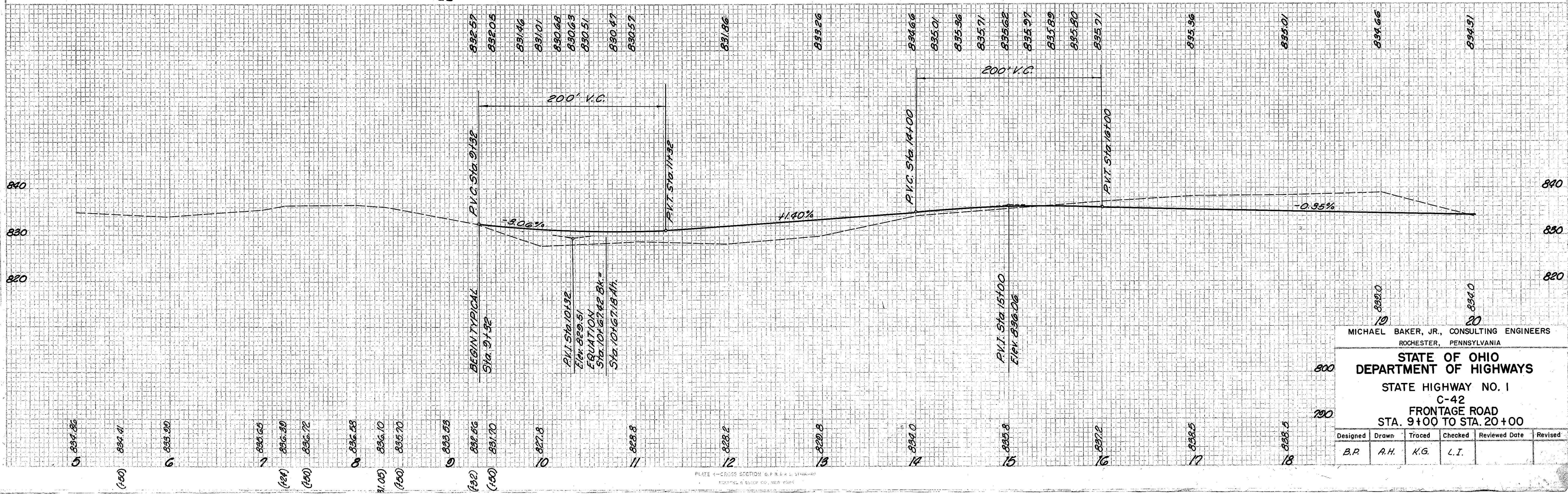
|                   |       |             |
|-------------------|-------|-------------|
| FED. RD. DIVISION | STATE | PROJECT     |
| 2                 | OHIO  | I-1103 (18) |

326  
458

CUYAHOGA & LAKE COUNTIES  
 CUY-I-15.9I  
 LAK-I-0.00



| DRAINAGE      |          |          |    |        |                     |          |
|---------------|----------|----------|----|--------|---------------------|----------|
| See Sheet No. | Ref. No. | Station  |    | Side & | I-14                | L-10     |
|               |          | From     | To |        | Paved Gutter Type 1 | Slooding |
|               |          | Lin. Ft. |    |        | Sq. Yds.            |          |
| 329           | I-D      | 10+65    |    | Rt.    | 68                  | 23       |
| Totals:       |          |          |    |        | 68                  | 23       |



MICHAEL BAKER, JR., CONSULTING ENGINEERS  
ROCHESTER, PENNSYLVANIA

STATE OF OHIO  
 DEPARTMENT OF HIGHWAYS  
 STATE HIGHWAY NO. 1  
 C-42  
 FRONTAGE ROAD  
 STA. 9+00 TO STA. 20+00

| Designed | Drawn | Traced | Checked | Reviewed Date | Revised |
|----------|-------|--------|---------|---------------|---------|
| B.P.     | A.H.  | K.G.   | L.I.    |               |         |