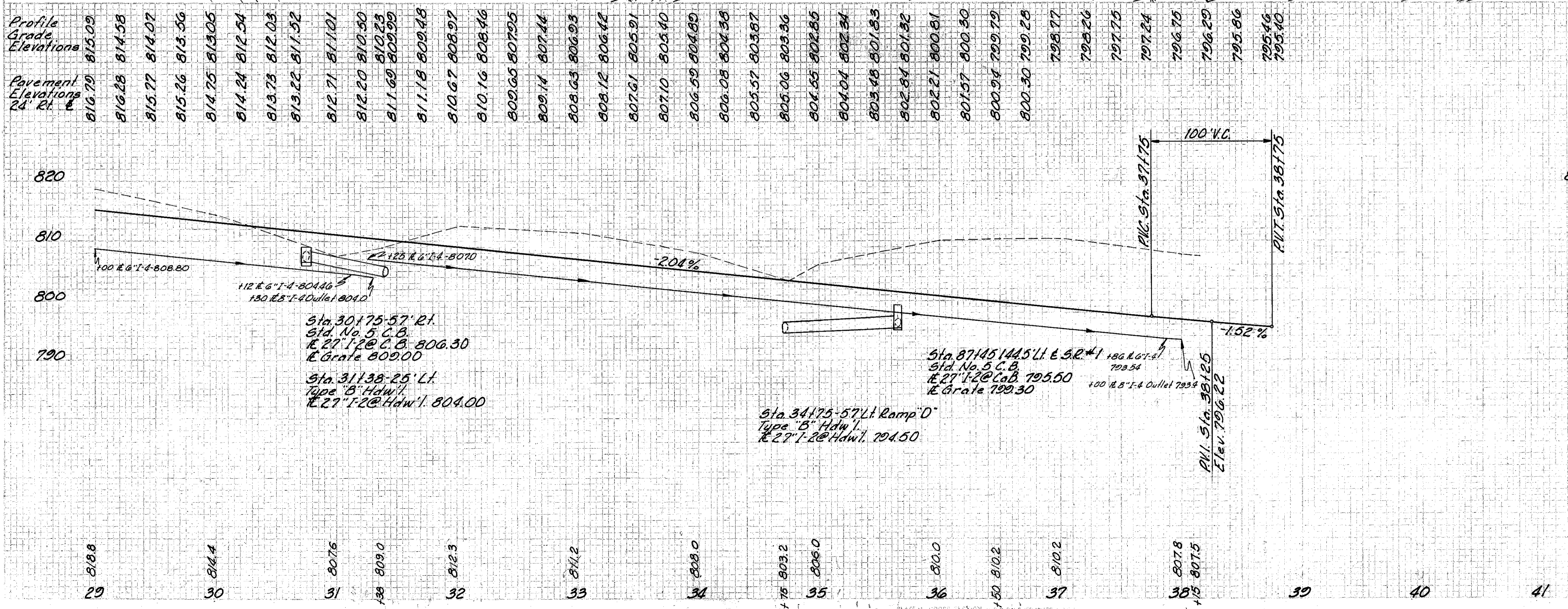
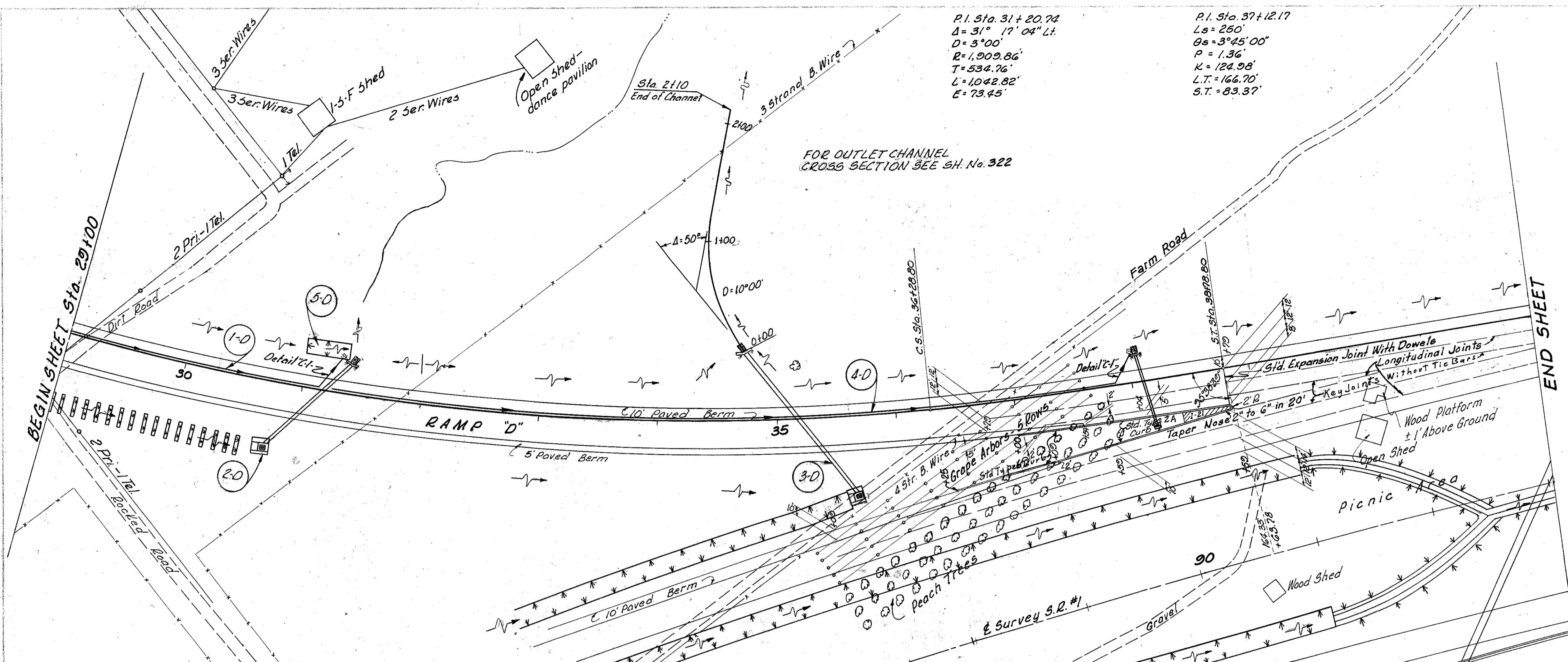


FED. RD. DIVISION	STATE	PROJECT
2	OHIO	I-1103 (18)

313  
458

**CUYAHOGA & LAKE COUNTIES**  
**CUY-1-15.91**  
**LAK-1-0.00**

Ref. No.	Station		Side E	PAVEMENT	
	From	To		F-12 Conc. Curb Std. Type C Lin. Ft.	F-21 Conc. Med. Pk. Type 1 Sq. Yds.
1-P	36+45	38+70	Rt.	136	285
2-P	38+37	38+78	Rt.		23
Totals:				136	285



See Ref. Sheet No.	Station	Side E	DRAINAGE		Totals
			Excavation	Structure	
E-2	Excavation for Structures	Cu. Yds.	7	7	14
E-3	Channel Excavation	Cu. Yds.	478	478	478
I-2	Under Pavement or Approaches	27" Lin. Ft.	100	100	100
I-3	Underdrain	Lin. Ft.	680	680	680
I-4	Underdrain Shallow	8" Lin. Ft.	10	10	10
I-5	Underdrain for Pipe Spec. (Sec. M.C. dia.)	8" Lin. Ft.	10	10	10
I-5	Underdrain Bend	Each	1	1	1
I-8	Catch Basin	Each	1	1	1
I-10	Dumped Rock Channel/Fraction	Cu. Yds.	2	2	4
L-10	Sodding	Sq. Yds.	2	2	55
S-1	Concrete for Structures	Cu. Yds.	6.0	6.2	12.2
S-4	Reinforcing Steel	Lbs.	255	265	520
S-20	Drainage Structures	Cu. Yds.	0.30	0.30	0.60

MICHAEL BAKER JR., CONSULTING ENGINEERS  
ROCHESTER, PENNSYLVANIA

**STATE OF OHIO**  
**DEPARTMENT OF HIGHWAYS**  
STATE HIGHWAY NO. 1  
C-42

**EUCLID SPUR INTERCHANGE RAMP "D"**  
**STA. 29+00 TO STA. 41+00**

Designed	Drawn	Traced	Checked	Reviewed Date	Revised
H.V.V.	A.H.	K.G.	L.I.		