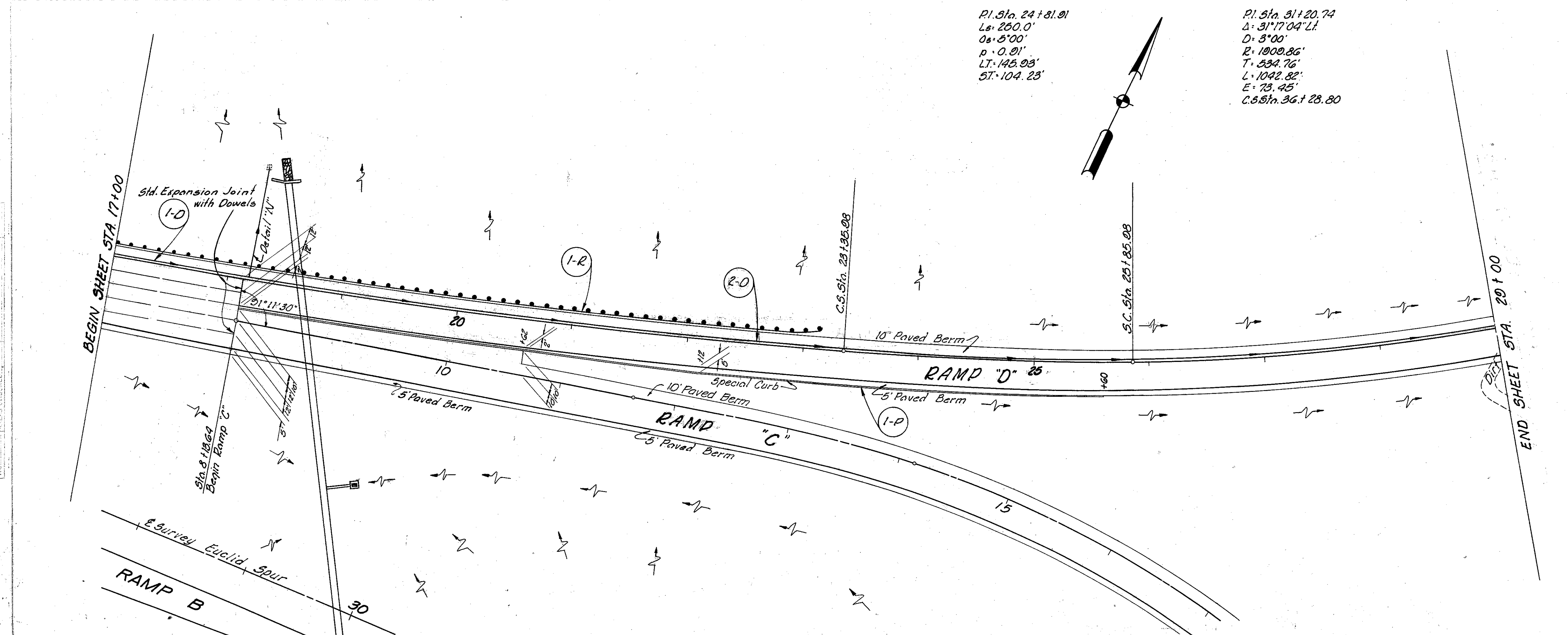


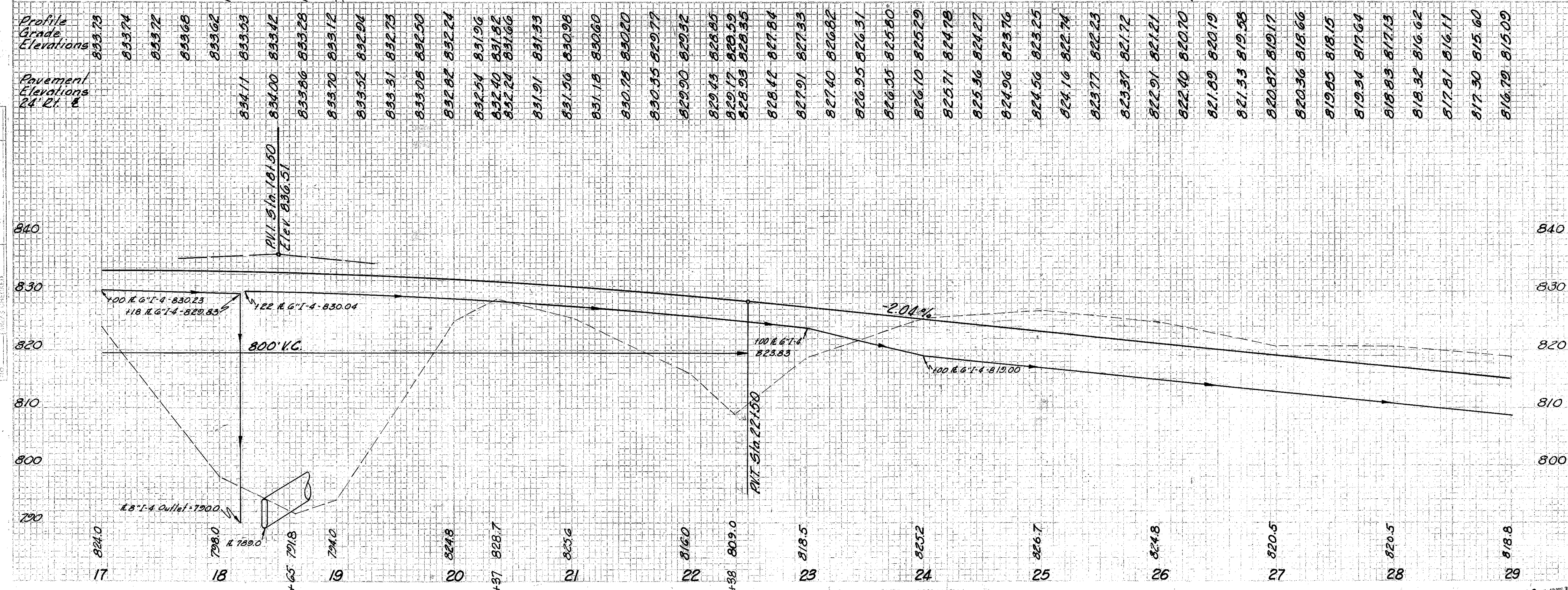
CUYAHOGA & LAKE COUNTIES
CUY-1-15.9I
LAK-1-0.00

ROADWAY & PAVEMENT					
Ref. No.	Station		Side &	I-15 Guard Rail Dug No. 2A Lin. Ft.	I-12 Conc. Curb Special Lin. Ft.
	From	To			
I-R	17+00	23+14.21	Lt.	612.02	
I-P	18+13	23+60			749
Totals:				612.02	749



P.I. Sta. 24+81.01
Ls. 260.0'
Os. 3'00'
p. 0.01'
LT. 143.03'
ST. 104.23'

P.I. Sta. 31+20.74
Δ: 31°17'04" L.I.
D: 3'00'
E: 1000.86'
T: 334.76'
L: 1042.82'
E: 73.45'
C.S. Sta. 36+28.80



See Ref. Sheet No.	Station	Side &		Underdrain	Pipe Outlets for Underdrain See M.C. 41	Pipe Specials for Underdrain	Drainages of Structures No. 2 Hydrographic
		From	To				
345	17+00	18+18		10	2	2	0.3
	2-0	18+22		600	2	2	
Totals:				678	600	10	2

MICHAEL BAKER JR., CONSULTING ENGINEERS
ROCHESTER, PENNSYLVANIA

STATE OF OHIO
DEPARTMENT OF HIGHWAYS
STATE HIGHWAY NO. 1
C-42

EUCLID SPUR INTERCHANGE RAMP "D"
STA. 17+00 TO STA. 29+00

Designed	Drawn	Traced	Checked	Reviewed	Date	Revised
H.V.V.	A.H.	K.G.	L.I.			