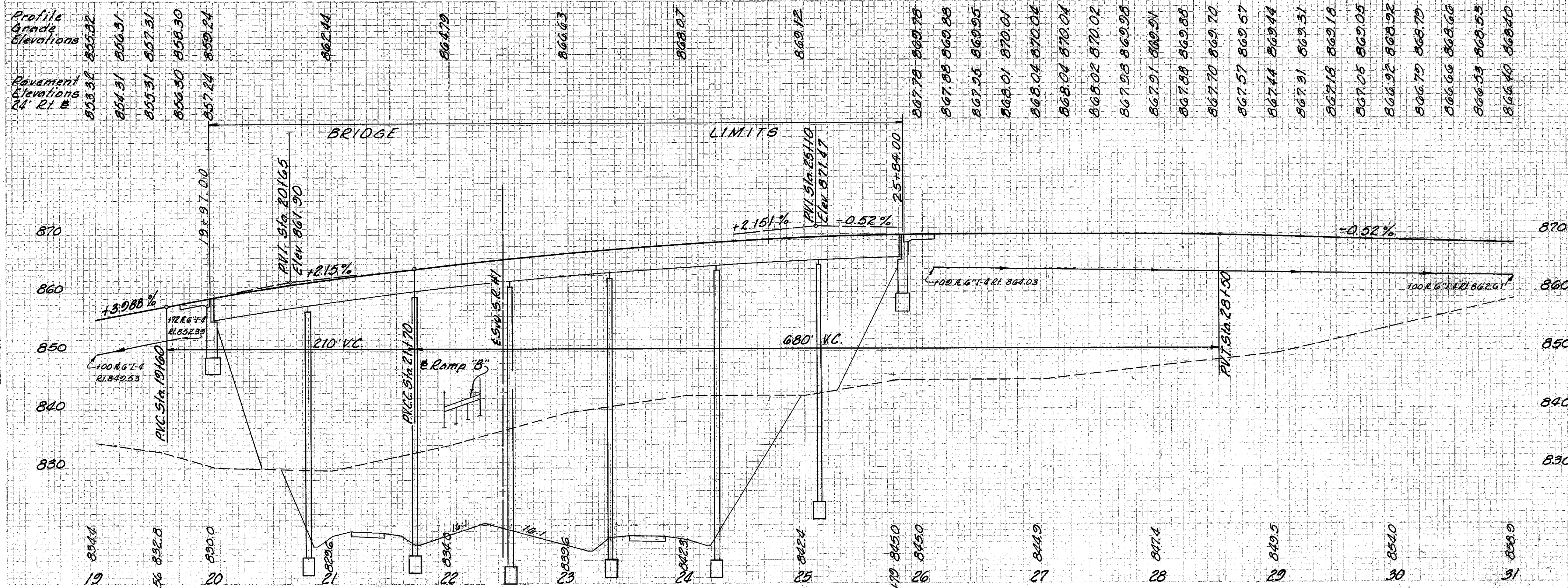
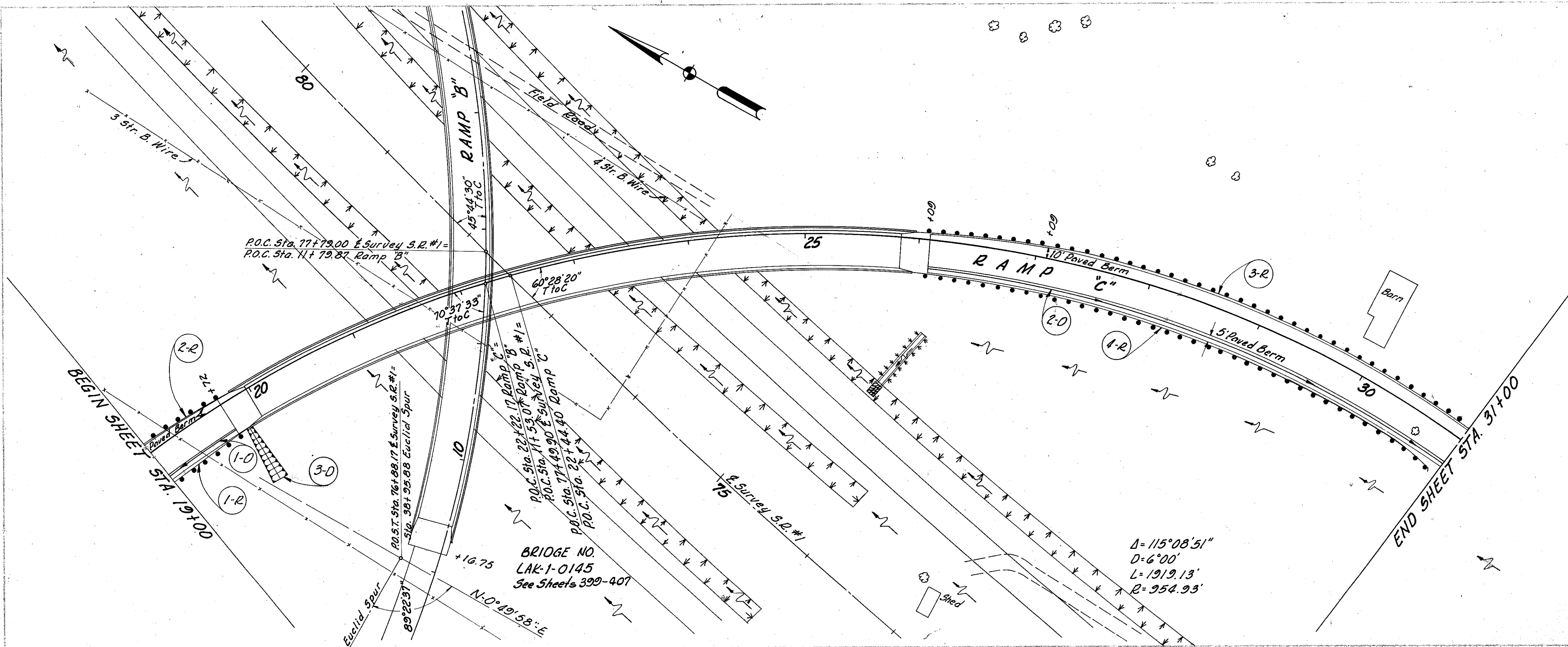


CUYAHOGA & LAKE COUNTIES
CUY-I-15.91
LAK-I-0.00

Ref. No.	Station		Side	I-75 Guard Rail Div. No. 24 Lin. Ft.
	From	To		
1-R	19+00	19+84.53	Rt.	81.70
2-R	19+00	19+85.06	Lt.	86.13
3-R	25+95.94	31+00	Lt.	540.40
4-R	25+96.47	30+87.47	Rt.	475.00
Total:				1153.23



See Ref. Sheet No.	Station	From		To	Side	I-75
		From	To			
398	3-0	19+100	19+72	20	Rt.	65
		20+100	31+00	21	Rt.	65
		19+100	19+100	22	Rt.	65

MICHAEL BAKER JR., CONSULTING ENGINEERS
 ROCHESTER, PENNSYLVANIA

STATE OF OHIO
DEPARTMENT OF HIGHWAYS
 STATE HIGHWAY NO. 1
 C-42
EUCLID SPUR INTERCHANGE RAMP "C"
STA. 19+00 TO STA. 31+00

Designed	Drawn	Traced	Checked	Reviewed	Date	Revised
H.V.V.	A.H.	K.G.	L.I.			