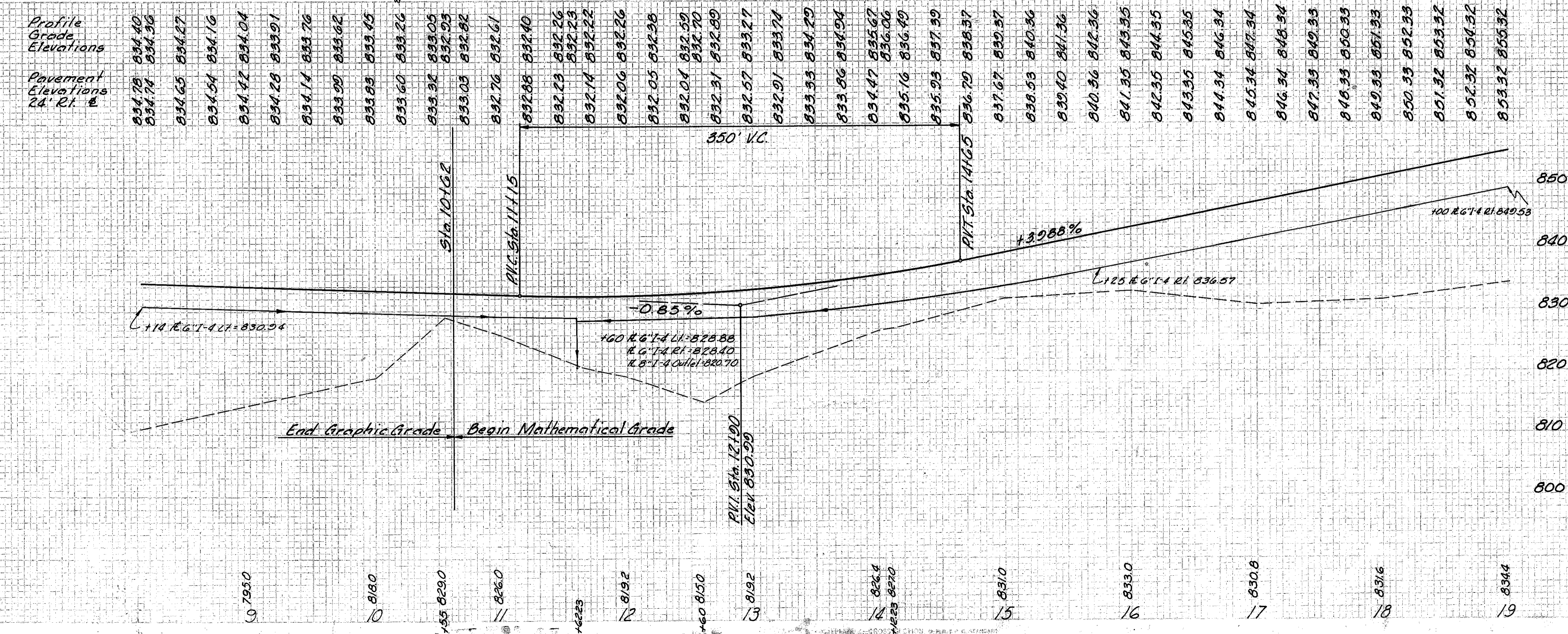
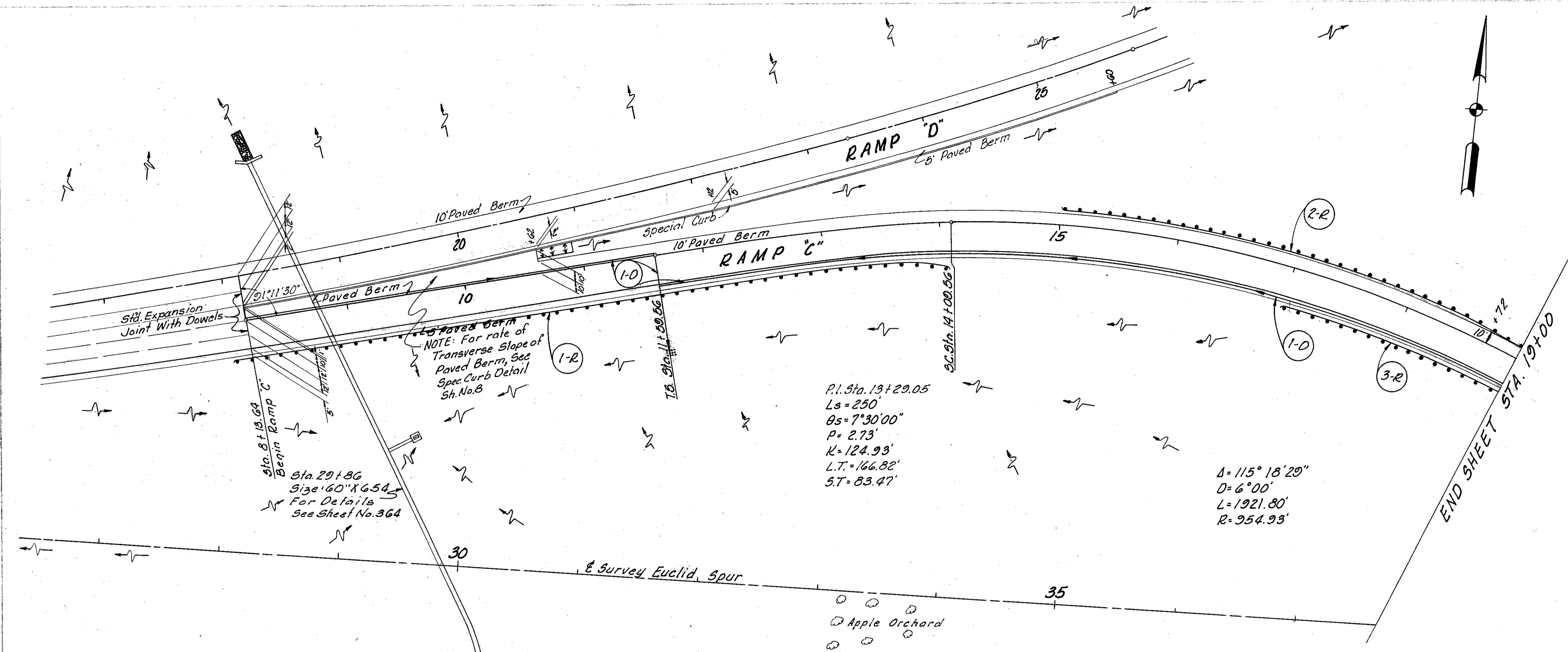


FED. RD. DIVISION	STATE	PROJECT
2	OHIO	I-1103 (18)

200  
458

CUYAHOGA & LAKE COUNTIES  
CUY-I-15.91  
LAK-I-0.00

ROADWAY				
Ref. No.	Station		Side	I-15 Guard Rail Dwg. No. 2A Lim. Ft.
	From	To		
1-R	8100	14+04.10	Rt.	600.00
2-R	15+03.61	19+00	Lt.	401.37
3-R	17+00	19+00	Rt.	193.30
Total:				1194.67



See Sheet No.	Station	From	To	DRAINAGE		No. & Aggregate
				I-2	I-5	
I-2	Side &	8'	72'	Class A 1/2" sw. or Approaches	Underdrain	See M.C. 4(a)
I-4	Ripe Outlets	8"	1064'	For Underdrain	Underdrain	See M.C. 4(a)
I-5	Underdrain	8"	1064'	Underdrain	Underdrain	See M.C. 4(a)
I-5	Specials	8"	1064'	Underdrain	Underdrain	See M.C. 4(a)
I-5	Drainage of Structures	8"	1064'	Underdrain	Underdrain	See M.C. 4(a)

MICHAEL BAKER JR., CONSULTING ENGINEERS  
ROCHESTER, PENNSYLVANIA

STATE OF OHIO  
DEPARTMENT OF HIGHWAYS  
STATE HIGHWAY NO. 1  
C-42

EUCLID SPUR INTERCHANGE RAMP "C"  
STA. 8+00 TO STA. 19+00

Designed	Drawn	Traced	Checked	Reviewed	Date	Revised
H.V.V.	A.H.	K.G.	L.I.			