

GUYAHOGA & LAKE COUNTIES
CUY-1-15.91
LAK-1-0.00

Ref. No.	Station		Side E	I-15 Guard Rail Dwg. No. 2A Lin. Ft.	I-12 Conc. Curb Spec. Lin. Ft.
	From	To			
1-R	17100	19103.84	LT	192.01	
2-R	24150	26138.86	RT	187.50	
1-P	22153	26135.07	LT		437
Totals:				384.51	437

ROADWAY & PAVEMENT					
Ref. No.	Station		Side E	I-15 Guard Rail Dwg. No. 2A Lin. Ft.	I-12 Conc. Curb Spec. Lin. Ft.
	From	To			
1-R	17100	19103.84	LT	192.01	
2-R	24150	26138.86	RT	187.50	
1-P	22153	26135.07	LT		437
Totals:				384.51	437

Ref. No.	Station	Side E	I-15 Guard Rail Dwg. No. 2A Lin. Ft.	I-12 Conc. Curb Spec. Lin. Ft.	Drainage of Structures No. & Aggregate
1-R	17100	19103.84	LT	192.01	
2-R	24150	26138.86	RT	187.50	
1-P	22153	26135.07	LT		437
Totals:				384.51	437

REVISIONS:
 3-31-60 Grade Raise for 16'-4" Dr. CI

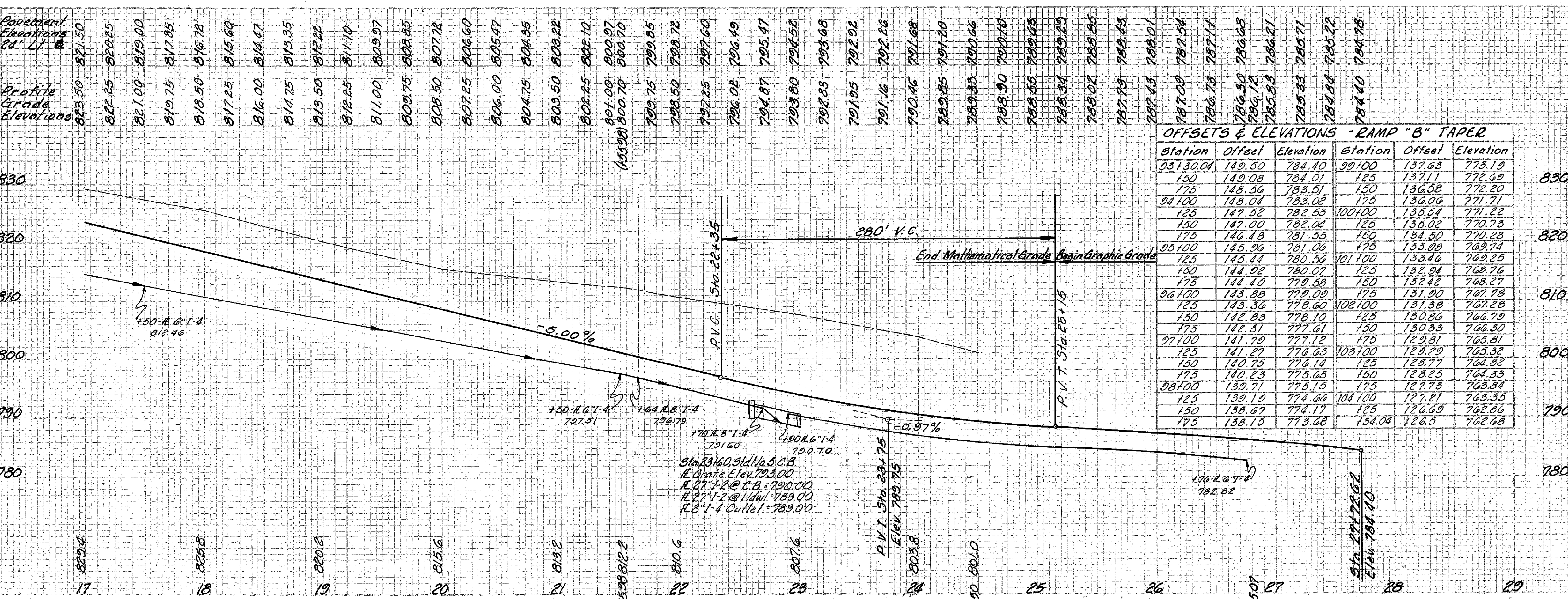
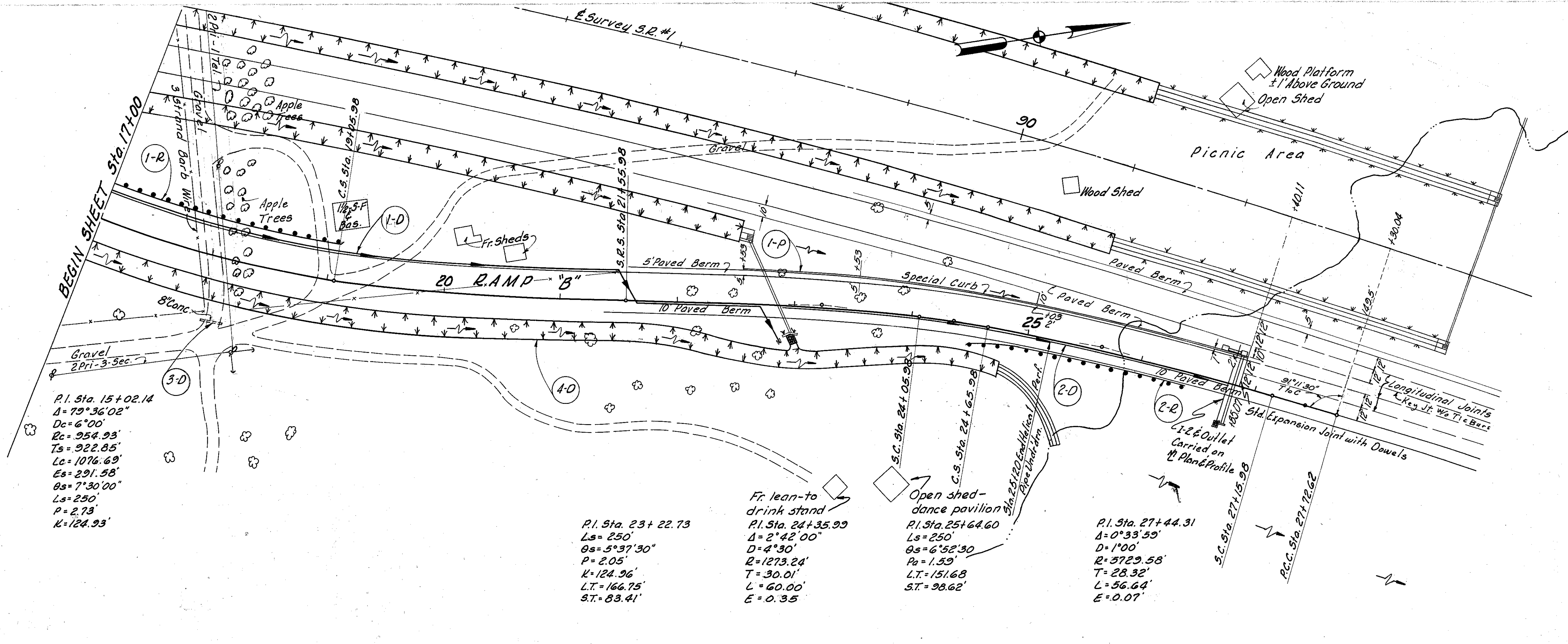
MICHAEL BAKER JR., CONSULTING ENGINEERS
 ROCHESTER, PENNSYLVANIA

STATE OF OHIO
DEPARTMENT OF HIGHWAYS
 STATE HIGHWAY NO. 1
 C-42

EUCLID SPUR INTERCHANGE RAMP "B"
STA. 17+00 TO STA. 29+00

Designed	Drawn	Traced	Checked	Reviewed/Date	Revised
H.V.V.	A.H.	K.G.	L.I.		

FINAL SURVEY PLOTTED
 PHOTO BOON
 MICH. CH. 10/11/60



Station	Offset	Elevation	Station	Offset	Elevation
95130.04	149.50	784.40	99100	137.63	773.19
150	149.08	784.01	125	137.11	772.69
175	148.56	783.51	150	136.58	772.20
94100	148.04	783.02	175	136.06	771.71
125	147.52	782.53	100100	135.54	771.22
150	147.00	782.04	125	135.02	770.73
175	146.48	781.55	150	134.50	770.23
95100	145.96	781.06	175	133.98	769.74
125	145.44	780.56	101100	133.46	769.25
150	144.92	780.07	125	132.94	768.76
175	144.40	779.58	150	132.42	768.27
96100	143.88	779.09	175	131.90	767.78
125	143.36	778.60	102100	131.38	767.28
150	142.83	778.10	125	130.86	766.79
175	142.31	777.61	150	130.33	766.30
97100	141.79	777.12	175	129.81	765.81
125	141.27	776.63	103100	129.29	765.32
150	140.75	776.14	125	128.77	764.82
175	140.23	775.65	150	128.25	764.33
98100	139.71	775.15	175	127.73	763.84
125	139.19	774.66	104100	127.21	763.35
150	138.67	774.17	125	126.69	762.86
175	138.15	773.68	134.04	126.15	762.68

P.I. Sta. 15+02.14
 $\Delta = 79^\circ 36' 02''$
 $D_c = 6' 00''$
 $E_c = 954.93'$
 $T_s = 922.85'$
 $L_c = 1076.69'$
 $E_s = 291.58'$
 $O_s = 7' 30' 00''$
 $L_s = 250'$
 $P = 2.73$
 $K = 124.93'$

P.I. Sta. 23+22.73
 $L_s = 250'$
 $O_s = 5^\circ 37' 30''$
 $P = 2.05'$
 $K = 124.96'$
 $L.T. = 166.75'$
 $S.T. = 83.41'$

Fr. lean-to drink stand
 P.I. Sta. 24+35.93
 $\Delta = 2^\circ 42' 00''$
 $D = 4' 30''$
 $R = 1273.24'$
 $T = 30.01'$
 $L = 60.00'$
 $E = 0.35'$

Open shed - dance pavilion
 P.I. Sta. 25+64.60
 $L_s = 250'$
 $O_s = 6^\circ 52' 30''$
 $P = 1.59'$
 $L.T. = 151.68'$
 $S.T. = 93.62'$

P.I. Sta. 27+44.31
 $\Delta = 0^\circ 33' 59''$
 $D = 1' 00''$
 $R = 5729.58'$
 $T = 28.32'$
 $L = 56.64'$
 $E = 0.07'$