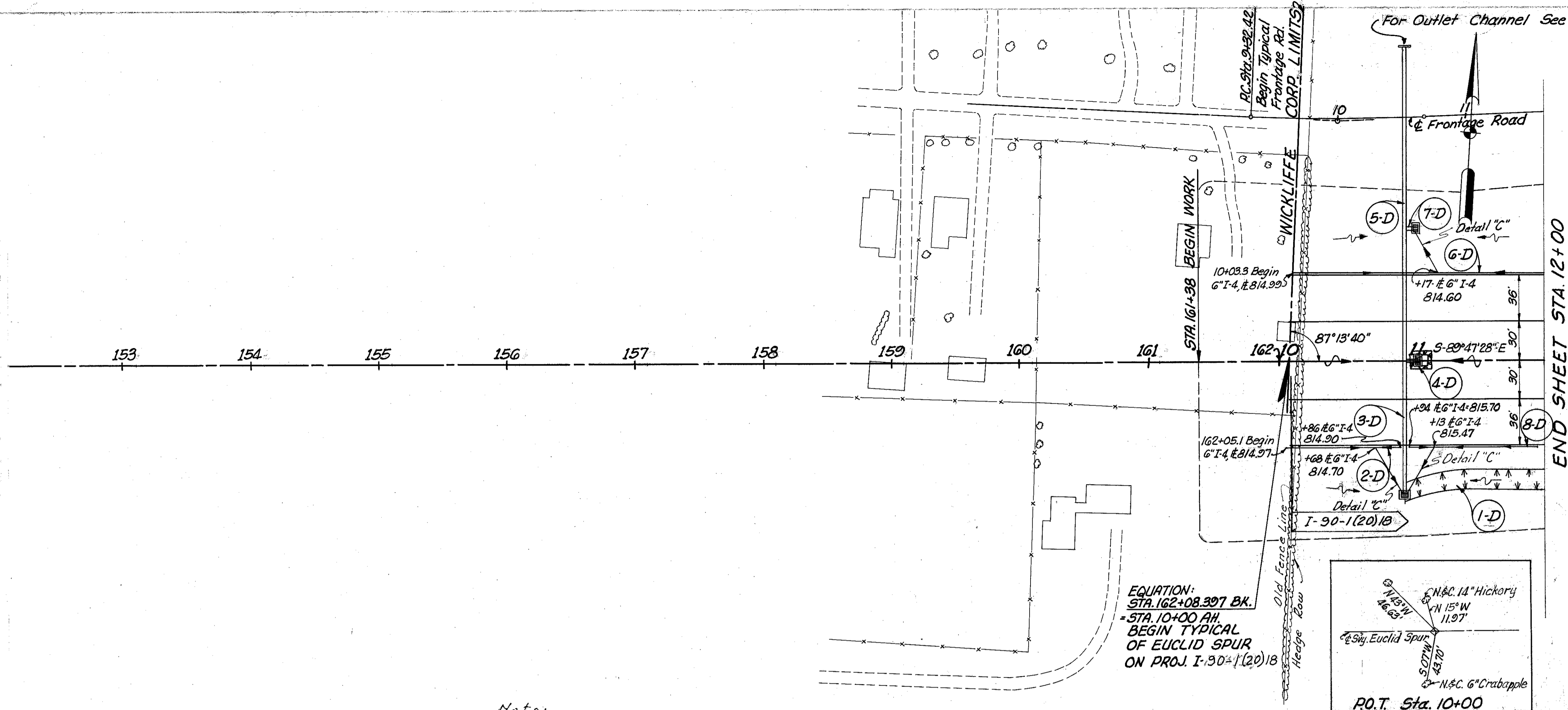
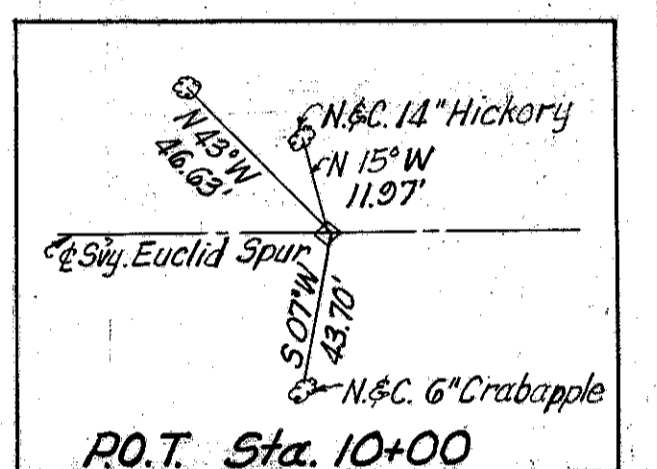


ORIGINAL SURVEY PLATS
NOTE BOOK APPROPRIATELY
DATE OF SURVEY

ORIGINAL SURVEY PLATS
NOTE BOOK APPROPRIATELY
DATE OF SURVEY

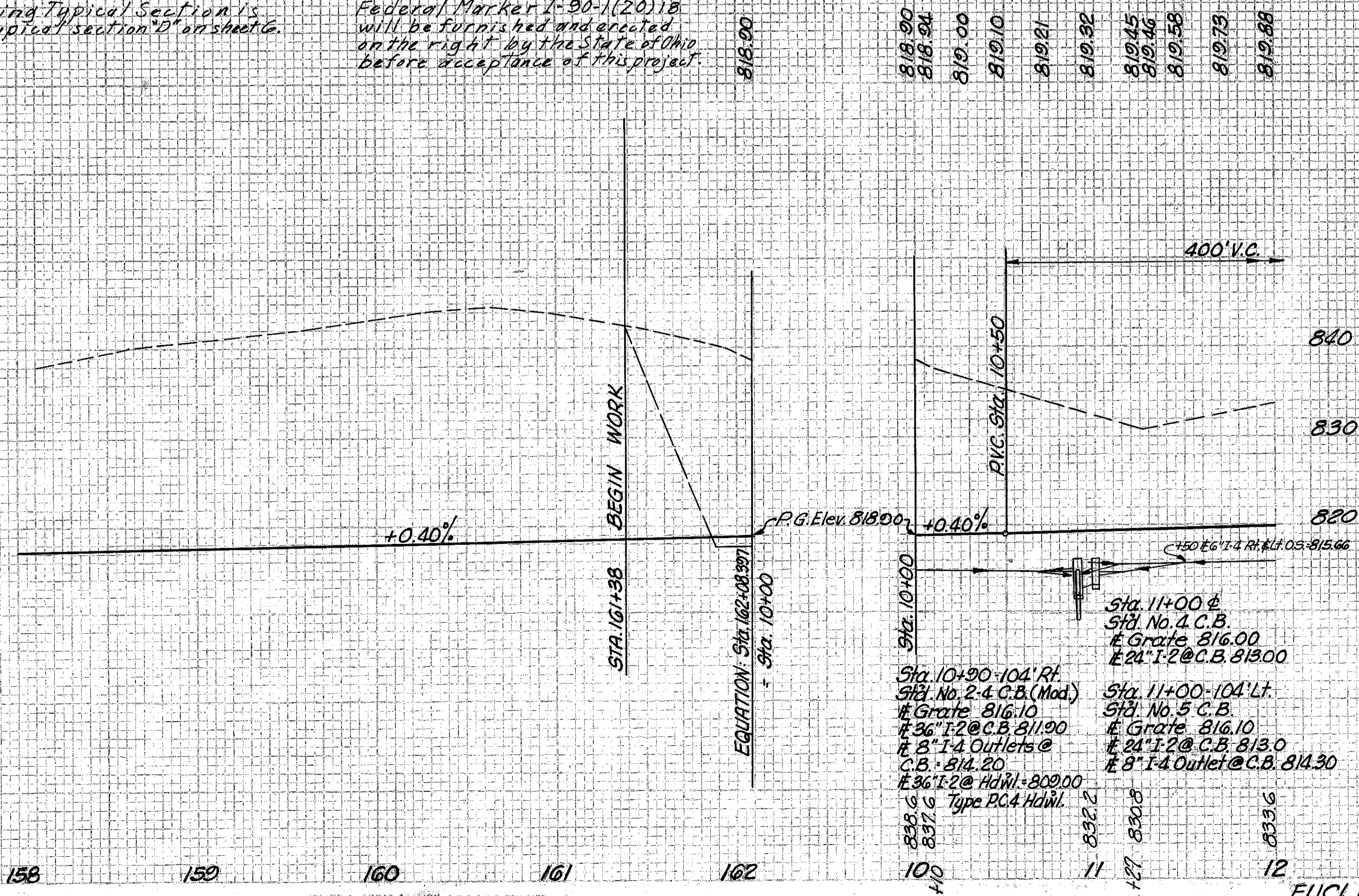


EQUATION:
STA. 162+08.397 BK.
= STA. 10+00 AH.
BEGIN TYPICAL
OF EUCLID SPUR
ON PROJ. I-30-1(20)18



Note:
Proposed Adjoining Typical Section is
the same as typical section 'D' on sheet G.

Federal Marker I-90-1(20)18
will be furnished and located
on the right by the State of Ohio
before acceptance of this project.



Sta. 10+90-104' RT.
Sta. No. 2-4 C.B. (Mod.)
Grate 816.10
36" I-2 @ C.B. 811.90
8" I-4 Outlets @
C.B. 814.20
36" I-2 @ Hdwl. 809.00
Type PCA Hdwl.

Sta. 11+00-104' LT.
Sta. No. 5 C.B.
Grate 816.10
24" I-2 @ C.B. 813.0
8" I-4 Outlet @ C.B. 814.30

DRAINAGE	Class	Size	Material	Length	Elev.	Notes	Quantity	
							Each	Total
I-2	Class 2	36"	M.C. (M.C. or M.C. (M.C.))	200	142		200	142
I-4	Underdrain	8"	M.C. (H)	118	10		118	10
I-4	Pipe Outlets	8"	M.C. (H)	1	1		1	1
I-5	Storm Sewer	36"	M.C. (H)	1	1		1	1
I-8	Catch Basin			1	1		1	1
I-8	Standard No. 5			1	1		1	1
I-8	Catch Basin (Modified)			1	1		1	1
I-8	Sodding			171	171		171	171
I-8	Concrete for Structures			0.59	0.59		0.59	0.59

MICHAEL BAKER JR., CONSULTING ENGINEERS
ROCHESTER, PENNSYLVANIA

STATE OF OHIO
DEPARTMENT OF HIGHWAYS
STATE HIGHWAY NO. 1
C-42
EUCLID SPUR- PLAN & PROFILE
STA. 10+00 TO STA. 12+00

Designed	Drawn	Traced	Checked	Reviewed	Date	Revised
H. W.	A. H.	B. P.	L. I.			