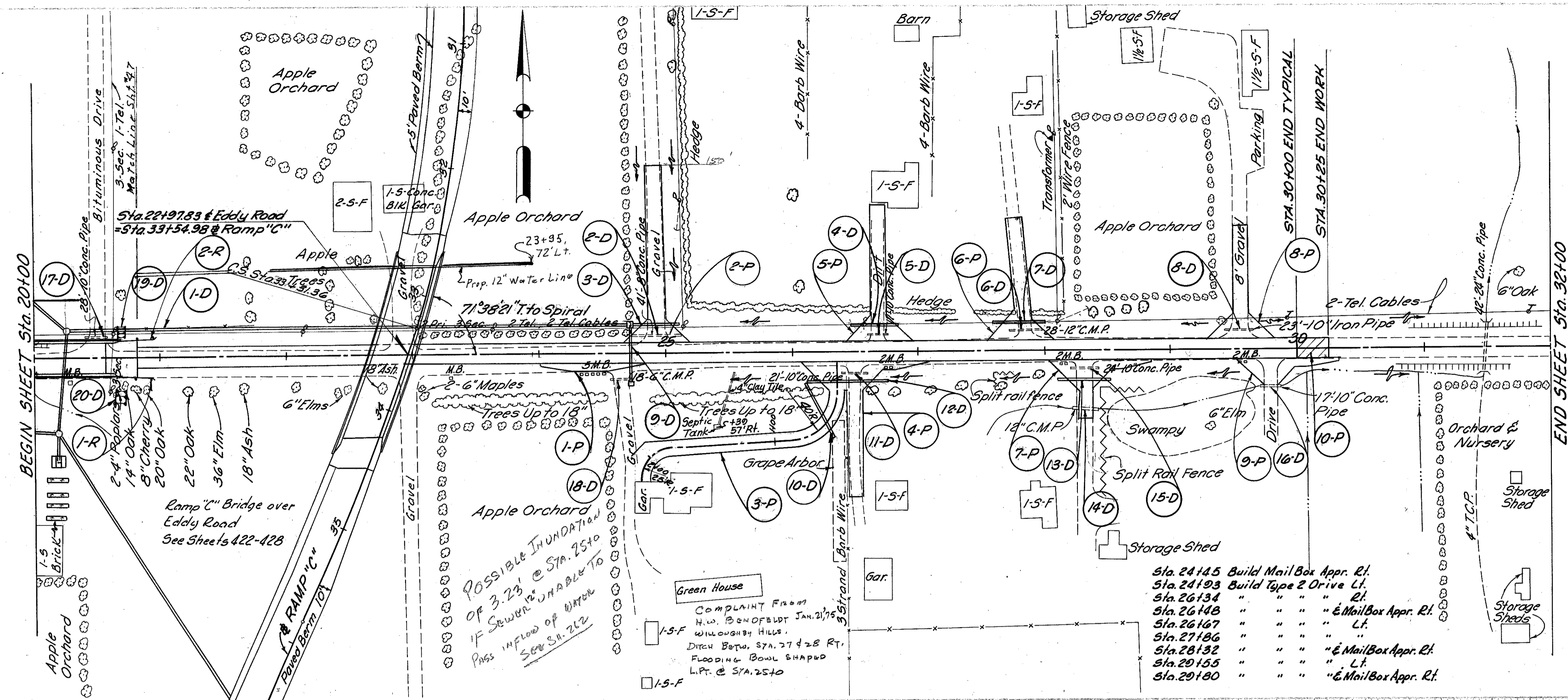


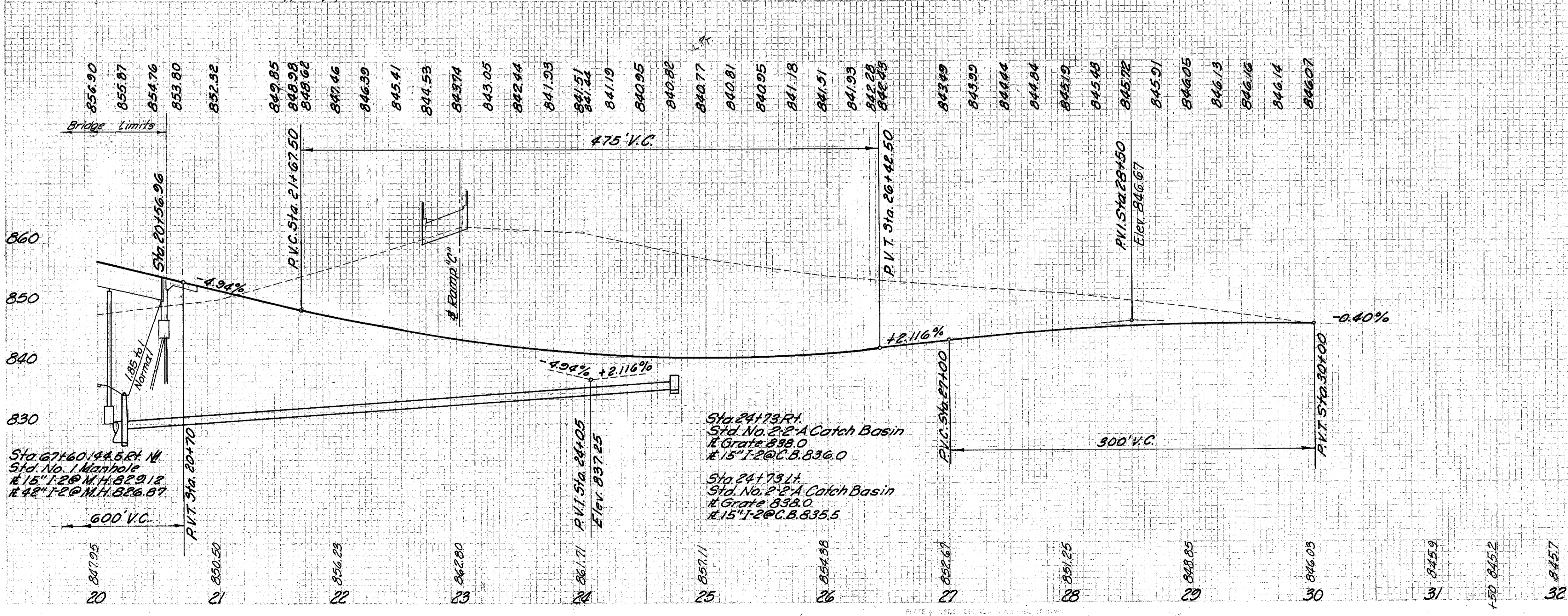
CUYAHOGA & LAKE COUNTIES  
CUY-I-15.91  
LAK-I-0.00



ROADWAY				
Ref. No.	Station		Side &	I-15 Guard Rail Div. No. 2A Lin. Ft.
	From	To		
1-R	2016722	2019225	RI	25.00
2-R	2016048	2019048	LI	25.00
Total:				50.00

PAVEMENT									
See Sheet No.	Ref. No.	Station		Side &	B-19		T-30	T-35	
		From	To		Aggregate Base Course	Bituminous Prime Coat 0.46% (5 1/2" Gole)	Asph. Conc. Surface Course		
	1-P	24145		RI	6	16		2.0	
344	2-P	24103		LI	12	23	30	3.3	
344	3-P	26134		RI	15	49	21	2.7	
344	4-P	26148		RI	14	16	26	2.1	
344	5-P	26167		LI	17	17	30	2.4	
344	6-P	27186		LI	14	13	34	1.6	
344	7-P	28132		RI	13	3	35	1.2	
344	8-P	29155		LI	6	16	9	1.1	
344	9-P	29180		RI	12		35	4.7	
344	10-P	30100	30125					1.3	
Totals:					120	139	112	242	14.4

See Sheet No.	Ref. No.	Station	Side &	DRAINAGE		Station	Side &
				From	To		
	1-P	24145	RI	12"	15'	24	LI
	2-P	24103	LI	12"	15'	24	LI
	3-P	26134	RI	12"	15'	24	LI
	4-P	26148	RI	12"	15'	24	LI
	5-P	26167	LI	12"	15'	24	LI
	6-P	27186	LI	12"	15'	24	LI
	7-P	28132	RI	12"	15'	24	LI
	8-P	29155	LI	12"	15'	24	LI
	9-P	29180	RI	12"	15'	24	LI
	10-P	30100		12"	15'	24	LI



REVISIONS:  
3-31-60 Grade Raised for 16'-4" B.C.I.

MICHAEL BAKER, JR., CONSULTING ENGINEERS  
ROCHESTER, PENNSYLVANIA

STATE OF OHIO  
DEPARTMENT OF HIGHWAYS  
STATE HIGHWAY NO. 1  
C-42  
EDDY ROAD - PLAN & PROFILE  
STA. 20+00 - STA. 32+00

Designed	Drawn	Traced	Checked	Reviewed Date	Revised
B.P.	A.H.	A.G.	L.I.		